

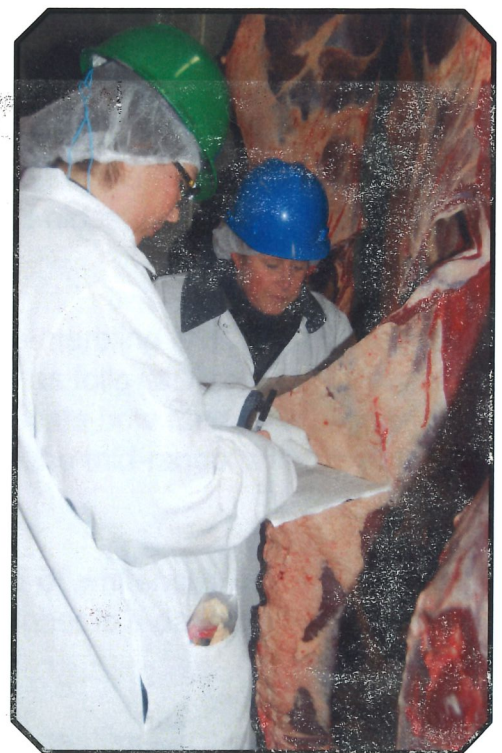
***Thank you to
our 2015 Judges!***

**Keith Underwood, Ph.D.
Dr. Amanda Blair
Megan Webb**

**South Dakota State University
Brookings, SD**



Cutting Edge **2015** **Carcass Contest**



DTBA 2002 Reality Based Carcass Class *Program Details*

The Dakota Territory Buffalo Association (DTBA) held the second Reality Based Carcass Class in conjunction with the 2002 Black Hills Buffalo Classic Show and Sale. Last year, the carcass class offered another dimension to the DTBA's already successful live animal show and sale. Through this new class, the association has been able to focus on and give attention to the driving force of the buffalo industry, quality meat production.

Buffalo ranchers produce some of the healthiest, most appetizing red meat in the world and consumers can and will continue to demand this meat product. With that in mind, the DTBA decided to again host a carcass class that will help to educate producers on the economic benefits of taking their bull calves all the way to slaughter weight. Additionally, for the first time ever in the buffalo industry, the DTBA opened up the contest to heifers. With the addition of 10 available spots for heifers, this contest will mark the first time any data has ever been recorded on slaughter heifers. A total of 20 entries were accepted, 10 each of bulls and heifers. Trophies will awarded for the first three places. There will also be a \$5,000 cash prize for the first place carcass in the bulls and another \$5,000 cash award for the highest placing female carcass.

The success of last year's contest was partly due to the unique nature of it. About a year and a half ago, Buffalo, SD producer, Sandy Limpert, approached Bruce Anderson of RC Western Meats in Rapid City, SD. What Limpert was suggesting was to do a carcass contest, but with a different twist. He wanted to have the contest winner determined based on the retail value of the meat the animal was able to put in the box. This is an idea that Limpert has been kicking around for a number of years and has been fine-tuning the details. Having been told it couldn't be done, that just spurred him on to find a way to do it. When he approached Anderson, Anderson was intrigued with the idea and also, being a large regional bison meat purveyor, wanted to know the results for his own personal experience. After much discussion and lots of fine tuning, the Dakota Territory Buffalo Association (DTBA) was the official host of the new Reality-Based Carcass Class.

The contest idea is simple. After the animals are delivered and a live weight obtained, they are then slaughtered. A hot hanging weight is recorded. After hanging in the cooler for a set amount of time, the carcasses are halved and then quartered. Under the watchful eye of an independent party, in this case, Dr. Robert Maddock of South Dakota State University, the meat is trimmed to a quarter inch of fat cover. All the fat that was trimmed off is weighed. Each cut is then weighed with a consistent, current value per pound put on them. The remaining bones, minus the trimmed off meat, are also weighed. A sample of burger from each carcass is cooked and the fat content measured. Anderson has developed a sliding scale in which to base value of the burger on its percentage of lean meat, meaning the leaner the meat, the more it was worth per pound.

Upon the completion of the contest, a sheet is made for each entry. It contains data such as the carcass weight, the carcass value, the middle value, the chuck value, the round value, the thin meats value and the trim. It also contains the waste items, including the fat and kidney and the bones. The winner is determined by the highest percentage of growth from the carcass value to the retail value.

So, what is accomplished by this reality-based contest? Limpert hopes that the data recorded and provided to the producers will help them understand their feeding program and how it affects the final product. From Anderson's point of view, it helps producers know what kind of animal will make the packer and the producer the most money. Over time, the records kept from this type of contest will help producers make genetic and production decisions that will help their yields and produce an efficient product. When the data from the first contest was released to the public, there were many calls to the association noting that this industry first had done its job in generating the beginning of a new database for buffalo meat producers.

Producers who entered the contest this year were asked to provide as much background data as possible on their animal, including genetic history, growth progress, feeding program, traveling information, nearly anything that might be recordable. Once again, photographs of the live animals were taken and photographs were taken throughout the entire process to record each entry and help producers and consumers to better understand the value of the meat they produce and consume.

WHAT DOES THAT MEAN? A GLOSSARY OF TERMS

PYG: Preliminary Yield Grade

This is determined by the fat depth opposite the ribeye. A .5 PYG unit increase is equivalent to a .2 inch increase in fat depth.

Adj. PYG: Adjusted Preliminary Yield Grade

An adjustment of the PYG according to the fat covering over the entire carcass.

HCW: Hot Carcass Weight

The weight of the carcass immediately after slaughter.

REA: Ribeye Area

The surface area of the longissimus muscle when a carcass is ribbed between the 5th and 6th rib.

KPH: Kidney, Pelvic, and Heart Fat

This the percentage of internal fat in a carcass as compared to the carcass weight.

YGM: Measured Yield Grade

The combination of PYG, HCW, REA, and KPH are components of the YGM value. 1.0 is the lowest yield grade, which means it is the highest cutability, having the highest lean to fat ratio. A 5.9 is the highest and least desirable yield grade, meaning it has the lowest lean to fat ratio.

YGA: Adjusted Yield Grade

The adjusted yield grade is similar to the measured yield grade, except the Adjusted PYG is used rather than the original PYG. This is a more representative number of the carcass as a whole.

MAT. LEAN: Lean Maturity

Lean maturity is based on the color of the ribeye. A lighter color is more youthful and receives a lower letter/number combination. Maturity A0 is the youngest, while E100 is the oldest.

MAT. SKEL: Skeletal Maturity

Skeletal maturity is based on the amount of cartilage that is remaining on the vertebrae. More cartilage is more youthful. Again, A0 is the youngest, while E100 is the oldest (showing no cartilage).

MARB: Marbling

Marbling is the amount of intramuscular fat within the ribeye. The marbling levels which occur in this data from the least amount of intramuscular fat to the greatest are as follows: Practically Devoid (PD), Traces (TR), Slight (SL), and Small (SM). A number follows to indicate how much marbling is present beyond the minimum requirement for the grade. So, a SL50 is in the mid-range of the slight score.

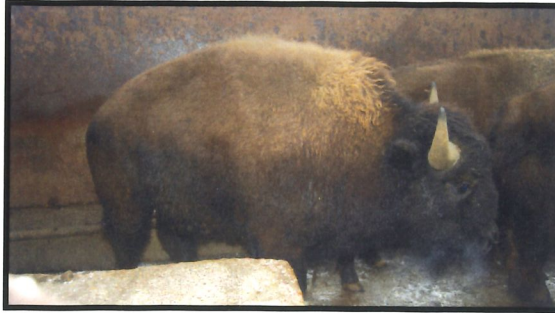
LEAN COLOR L: L Score on Lean Color

The L score is determined by a colorimeter that gives a reading of whiteness or reflectance of the ribeye. So a higher number means lighter color, while a lower number is a darker color.

SHEAR FORCE

The number is the kilograms of force it takes to shear through a 1 centimeter thick core sample from a steak. A low number indicates a tenderer piece of meat, and a higher number is tougher.

2015 Cutting Edge Carcass Contest Bulls



First Place Bull
(No tag)



This bull was weaned in March of 2014. He was put on a ration of 20% grain, 50% oatlage and silage and 30% hay. In September of 2014, his finishing ration was changed to 35% grain, 55% oatlage and silage and 10% hay.

Bull's final weight at home was approximately 1,040 pounds.

| LIVE BUFFALO WEIGHT | CARCASS WEIGHT | PER LB. VALUE | CARCASS VALUE |
|--|----------------|--------------------|-------------------------|
| | 532 | \$4.08 | \$2,170.56 |
| | | | % OF TOTAL VALUE |
| MIDDLE BUFFALO VALUE (NY STRIP, TOP SIRLOIN BUTT, TENDERLOIN, RIB-EYE) | | \$741.83 | 34.18% |
| BUFFALO CHUCK VALUE (SHOULDER CLOD, INSIDE CHUCK ROLL, BRISKET) | | \$435.55 | 20.07% |
| BUFFALO ROUND VALUE (PEELED KNUCKLE, TOP ROUND, FLAT, EYE OF ROUND) | | \$472.01 | 21.75% |
| BUFFALO THIN MEATS (TRI-TIP, BALL-TIP, FLANK STEAK, BBQ RIB, SKIRT) | | \$68.50 | 3.16% |
| BUFFALO TRIM 87% | | \$1,103.90 | 50.86% |
| | | TOTAL VALUE | % MARK-UP |
| | | \$2,821.79 | 130.00% |

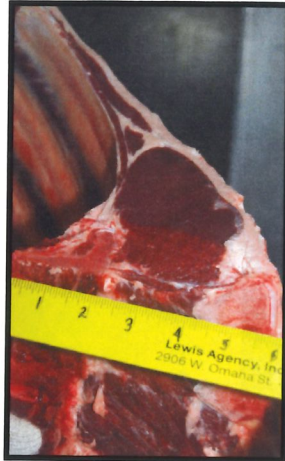
| WASTE ITEMS | LBS | % CARCASS WEIGHT |
|--------------|------|------------------|
| FAT & KIDNEY | 20.2 | 3.80% |
| BONES | 82 | 15.41% |

| ANIMAL | SEX | BF | PYG | ADJ. | HCW | REA | %KPH | YGM | YGA | LEAN | SKEL | MARB | MIN. L | SHEAR |
|--------|------|--------|-----|------|-----|------|------|-----|-----|------|------|------|--------|---------|
| | BULL | INCHES | 2.6 | PYG | 532 | 10.9 | 2.0 | 2.3 | 2.3 | C50 | A30 | SL60 | 36.3 | 6.10 kg |

2015 Cutting Edge Carcass Contest Bulls



Third Place Bull
(Yellow 35)



This bull was brought to the Young Guns host ranch as a calf. Upon arrival at the host ranch, the calf was put on free choice pellets and grass hay until mid-April when the pellets were removed.

The bull was turned out to grass on May 8, 2014, with two pounds of cake 2x per week. The bull was brought in off grass on August 22 and put on free choice pellets and grass hay until the bull was processed for the Young Guns class.

Weight on 1/13/15 was 1,084 pounds.

| LIVE BUFFALO WEIGHT | CARCASS WEIGHT | PER LB. VALUE | CARCASS VALUE |
|--|----------------|--------------------|-------------------------|
| | 610 | \$4.08 | \$2,488.80 |
| | | | % OF TOTAL VALUE |
| MIDDLE BUFFALO VALUE (NY STRIP, TOP SIRLOIN BUTT, TENDERLOIN, RIB-EYE) | | \$885.60 | 35.58% |
| BUFFALO CHUCK VALUE (SHOULDER CLOD, INSIDE CHUCK ROLL, BRISKET) | | \$519.25 | 20.86% |
| BUFFALO ROUND VALUE (PEELED KNUCKLE, TOP ROUND, FLAT, EYE OF ROUND) | | \$532.75 | 21.41% |
| BUFFALO THIN MEATS (TRI-TIP, BALL-TIP, FLANK STEAK, BBQ RIB, SKIRT) | | \$80.56 | 3.24% |
| BUFFALO TRIM 83% | | \$1,204.00 | 48.38% |
| | | TOTAL VALUE | % MARK-UP |
| | | \$3,222.16 | 129.47% |

| WASTE ITEMS | LBS | % CARCASS WEIGHT |
|--------------|------|------------------|
| FAT & KIDNEY | 20.6 | 3.38% |
| BONES | 94 | 15.41% |

| ANIMAL | SEX | BF INCHES | PYG | ADJ. PYG | HCW | REA | %KPH | YGM | YGA | LEAN | SKEL | MARB | MIN. L | SHEAR FORCE |
|--------|------|-----------|-----|----------|-----|------|------|-----|-----|------|------|------|--------|-------------|
| | BULL | | 2.8 | 2.8 | 610 | 11.1 | 1.5 | 2.8 | 2.8 | B50 | A80 | TR50 | 33.7 | 5.13 kg |

2015 Cutting Edge Carcass Contest Bulls



(Red 3)



No data available.

| LIVE BUFFALO WEIGHT | CARCASS WEIGHT | PER LB. VALUE | CARCASS VALUE |
|--|----------------|--------------------|-------------------------|
| | 685 | \$4.08 | \$2,794.80 |
| | | | % OF TOTAL VALUE |
| MIDDLE BUFFALO VALUE (NY STRIP, TOP SIRLOIN BUTT, TENDERLOIN, RIB-EYE) | | \$967.54 | 34.62% |
| BUFFALO CHUCK VALUE (SHOULDER CLOD, INSIDE CHUCK ROLL, BRISKET) | | \$563.27 | 20.15% |
| BUFFALO ROUND VALUE (PEELED KNUCKLE, TOP ROUND, FLAT, EYE OF ROUND) | | \$572.71 | 20.49% |
| BUFFALO THIN MEATS (TRI-TIP, BALL-TIP, FLANK STEAK, BBQ RIB, SKIRT) | | \$92.08 | 3.29% |
| BUFFALO TRIM 89% | | \$1,419.49 | 50.79% |
| | | TOTAL VALUE | % MARK-UP |
| | | \$3,615.09 | 129.35% |

| WASTE ITEMS | LBS | % CARCASS WEIGHT |
|--------------|------|------------------|
| FAT & KIDNEY | 30.3 | 4.42% |
| BONES | 106 | 15.47% |

| ANIMAL | SEX | BF INCHES | PYG | ADJ. PYG | HCW | REA | %KPH | YGM | YGA | LEAN | SKEL | MARB | MIN. L | SHEAR FORCE |
|--------|------|-----------|-----|----------|-----|------|------|-----|-----|------|------|------|--------|-------------|
| | BULL | | 2.9 | 2.9 | 685 | 12.1 | 2.5 | 2.7 | 2.7 | B30 | A70 | TR40 | 33.4 | 3.53 kg |

2015 Cutting Edge Carcass Contest Bulls



(Yellow 57)



This bull was brought to the Young Guns host ranch as a calf. Upon arrival at the host ranch, the calf was put on free choice pellets and grass hay until mid-April when the pellets were removed.

The bull was turned out to grass on May 8, 2014, with two pounds of cake 2x per week. The bull was brought in off grass on August 22 and put on free choice pellets and grass hay until the bull was processed for the Young Guns class.

Weight on 1/13/15 was 1,109 pounds.

| LIVE BUFFALO WEIGHT | CARCASS WEIGHT | PER LB. VALUE | CARCASS VALUE |
|--|----------------|--------------------|-------------------------|
| | 606 | \$4.08 | \$2,472.48 |
| | | | % OF TOTAL VALUE |
| MIDDLE BUFFALO VALUE (NY STRIP, TOP SIRLOIN BUTT, TENDERLOIN, RIB-EYE) | | \$802.04 | 32.44% |
| BUFFALO CHUCK VALUE (SHOULDER CLOD, INSIDE CHUCK ROLL, BRISKET) | | \$512.74 | 20.74% |
| BUFFALO ROUND VALUE (PEELED KNUCKLE, TOP ROUND, FLAT, EYE OF ROUND) | | \$551.05 | 22.29% |
| BUFFALO THIN MEATS (TRI-TIP, BALL-TIP, FLANK STEAK, BBQ RIB, SKIRT) | | \$85.63 | 3.46% |
| BUFFALO TRIM 89% | | \$1,235.19 | 49.96% |
| | | TOTAL VALUE | % MARK-UP |
| | | \$3,186.65 | 128.88% |

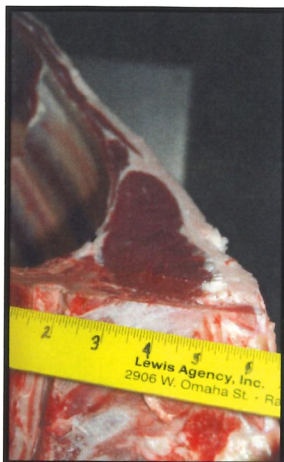
| WASTE ITEMS | LBS | % CARCASS WEIGHT |
|--------------|------|------------------|
| FAT & KIDNEY | 24.4 | 4.03% |
| BONES | 97 | 16.01% |

| ANIMAL | SEX | BF INCHES | PYG | ADJ. PYG | HCW | REA | %KPH | YGM | YGA | LEAN | SKEL | MARB | MIN. L | SHEA FORC |
|--------|------|-----------|-----|----------|-----|-----|------|-----|-----|------|------|------|--------|-----------|
| | BULL | | 2.7 | 2.7 | 606 | 9.5 | 2.5 | 3.0 | 3.0 | C20 | C30 | TR80 | 36.3 | 5.22 k |

2015 Cutting Edge Carcass Contest Bulls



(Yellow 67)



This bull was brought to the Young Guns host ranch as a calf. Upon arrival at the host ranch, the calf was put on free choice pellets and grass hay until mid-April when the pellets were removed.

The bull was turned out to grass on May 8, 2014, with two pounds of cake 2x per week. The bull was brought in off grass on August 22 and put on free choice pellets and grass hay until the bull was processed for the Young Guns class.

Weight on 1/13/15 was 1,129 pounds.

| LIVE BUFFALO WEIGHT | CARCASS WEIGHT | PER LB. VALUE | CARCASS VALUE |
|--|----------------|--------------------|-------------------------|
| | 584 | \$4.08 | \$2,382.72 |
| | | | % OF TOTAL VALUE |
| MIDDLE BUFFALO VALUE (NY STRIP, TOP SIRLOIN BUTT, TENDERLOIN, RIB-EYE) | | \$797.01 | 33.45% |
| BUFFALO CHUCK VALUE (SHOULDER CLOD, INSIDE CHUCK ROLL, BRISKET) | | \$458.49 | 19.24% |
| BUFFALO ROUND VALUE (PEELED KNUCKLE, TOP ROUND, FLAT, EYE OF ROUND) | | \$522.54 | 21.93% |
| BUFFALO THIN MEATS (TRI-TIP, BALL-TIP, FLANK STEAK, BBQ RIB, SKIRT) | | \$79.38 | 3.33% |
| BUFFALO TRIM 86% | | \$1,210.11 | 50.79% |
| | | TOTAL VALUE | % MARK-UP |
| | | \$3,067.53 | 128.74% |

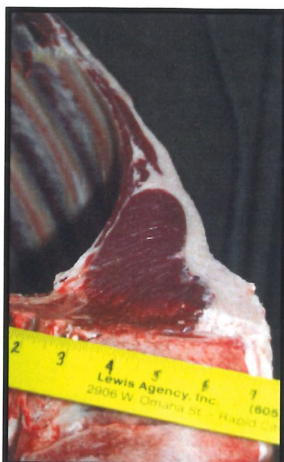
| WASTE ITEMS | LBS | % CARCASS WEIGHT |
|--------------|------|------------------|
| FAT & KIDNEY | 19.7 | 3.37% |
| BONES | 95 | 16.27% |

| ANIMAL | SEX | BF INCHES | PYG | ADJ. PYG | HCW | REA | %KPH | YGM | YGA | LEAN | SKEL | MARB | MIN. L | SHEAR FORCE |
|--------|------|-----------|-----|----------|-----|-----|------|-----|-----|------|------|------|--------|-------------|
| | BULL | | 3.3 | 3.3 | 584 | 9.9 | 2.0 | 3.5 | 3.5 | B20 | B20 | SL00 | 35.8 | 3.71 kg |

2015 Cutting Edge Carcass Contest Bulls



(Yellow 45)



This bull was brought to the Young Guns host ranch as a calf. Upon arrival at the host ranch, the calf was put on free choice pellets and grass hay until mid-April when the pellets were removed.

The bull was turned out to grass on May 8, 2014, with two pounds of cake 2x per week. The bull was brought in off grass on August 22 and put on free choice pellets and grass hay until the bull was processed for the Young Guns class.

Weight on 1/13/15 was 1,129 pounds.

| LIVE BUFFALO WEIGHT | CARCASS WEIGHT | PER LB. VALUE | CARCASS VALUE |
|---|----------------|--------------------|-------------------------|
| | 605 | \$4.08 | \$2,468.40 |
| | | | % OF TOTAL VALUE |
| MIDDLE BUFFALO VALUE <i>(NY STRIP, TOP SIRLOIN BUTT, TENDERLOIN, RIB-EYE)</i> | | \$880.11 | 35.66% |
| BUFFALO CHUCK VALUE <i>(SHOULDER CLOD, INSIDE CHUCK ROLL, BRISKET)</i> | | \$483.91 | 19.60% |
| BUFFALO ROUND VALUE <i>(PEELED KNUCKLE, TOP ROUND, FLAT, EYE OF ROUND)</i> | | \$510.15 | 20.67% |
| BUFFALO THIN MEATS <i>(TRI-TIP, BALL-TIP, FLANK STEAK, BBQ RIB, SKIRT)</i> | | \$80.28 | 3.25% |
| BUFFALO TRIM 85% | | \$1,191.30 | 48.26% |
| | | TOTAL VALUE | % MARK-UP |
| | | \$3,145.75 | 127.44% |

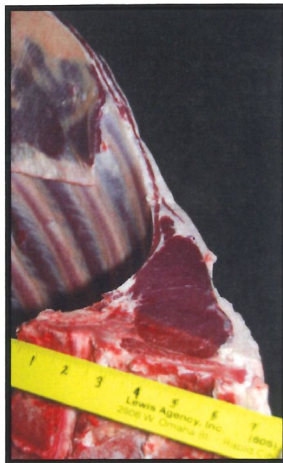
| WASTE ITEMS | LBS | % CARCASS WEIGHT |
|--------------|-------|------------------|
| FAT & KIDNEY | 27.65 | 4.57% |
| BONES | 97 | 16.03% |

| ANIMAL | SEX | BF INCHES | PYG | ADJ. PYG | HCW | REA | %KPH | YGM | YGA | LEAN B50 | SKEL C20 | MARB SM10 | MIN. L | SHEAR FORCE |
|--------|------|-----------|-----|----------|-----|------|------|-----|-----|----------|----------|-----------|--------|-------------|
| | BULL | | 3.0 | 3.2 | 605 | 12.3 | 2.5 | 2.4 | 2.6 | | | | 35.4 | 6.49 kg |

2015 Cutting Edge Carcass Contest Bulls



(Yellow 36)



This bull was brought to the Young Guns host ranch as a calf. Upon arrival at the host ranch, the calf was put on free choice pellets and grass hay until mid-April when the pellets were removed.

The bull was turned out to grass on May 8, 2014, with two pounds of cake 2x per week. The bull was brought in off grass on August 22 and put on free choice pellets and grass hay until the bull was processed for the Young Guns class.

Weight on 1/13/15 was 1,145 pounds.

| LIVE BUFFALO WEIGHT | CARCASS WEIGHT | PER LB. VALUE | CARCASS VALUE |
|--|----------------|--------------------|------------------|
| | 608 | \$4.08 | \$2,480.64 |
| % OF TOTAL VALUE | | | |
| MIDDLE BUFFALO VALUE (NY STRIP, TOP SIRLOIN BUTT, TENDERLOIN, RIB-EYE) | | \$836.04 | 33.70% |
| BUFFALO CHUCK VALUE (SHOULDER CLOD, INSIDE CHUCK ROLL, BRISKET) | | \$487.32 | 19.64% |
| BUFFALO ROUND VALUE (PEELED KNUCKLE, TOP ROUND, FLAT, EYE OF ROUND) | | \$562.48 | 22.67% |
| BUFFALO THIN MEATS (TRI-TIP, BALL-TIP, FLANK STEAK, BBQ RIB, SKIRT) | | \$89.15 | 3.59% |
| BUFFALO TRIM 86% | | \$1,177.08 | 47.45% |
| | | TOTAL VALUE | % MARK-UP |
| | | \$3,152.07 | 127.07% |

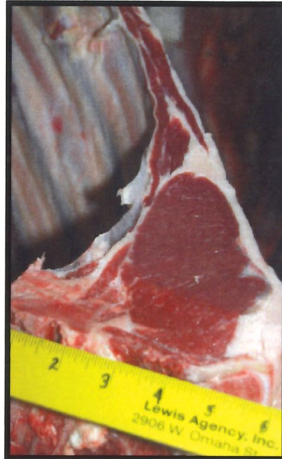
| WASTE ITEMS | LBS | % CARCASS WEIGHT |
|--------------|-------|------------------|
| FAT & KIDNEY | 23.65 | 3.89% |
| BONES | 106 | 17.43% |

| ANIMAL | SEX | BF INCHES | PYG | ADJ. PYG | HCW | REA | %KPH | YGM | YGA | LEAN | SKEL | MARB | MIN. L | SHEAR FORCE |
|--------|------|-----------|-----|----------|-----|------|------|-----|-----|------|------|------|--------|-------------|
| | BULL | | 2.6 | 2.6 | 608 | 10.9 | 2.0 | 2.6 | 2.6 | C10 | B80 | TR60 | 35.0 | 5.52 kg |

2015 Cutting Edge Carcass Contest Bulls



(Yellow 2)



This bull was brought to the Young Guns host ranch as a calf. Upon arrival at the host ranch, the calf was put on free choice pellets and grass hay until mid-April when the pellets were removed.

The bull was turned out to grass on May 8, 2014, with two pounds of cake 2x per week. The bull was brought in off grass on August 22 and put on free choice pellets and grass hay until the bull was processed for the Young Guns class.

Weight on 1/13/15 was 1,228 pounds.

| LIVE BUFFALO WEIGHT | CARCASS WEIGHT | PER LB. VALUE | CARCASS VALUE |
|---|----------------|--------------------|------------------|
| | 635 | \$4.08 | \$2,590.80 |
| | | | % OF TOTAL VALUE |
| MIDDLE BUFFALO VALUE <i>(NY STRIP, TOP SIRLOIN BUTT, TENDERLOIN, RIB-EYE)</i> | | \$902.88 | 34.85% |
| BUFFALO CHUCK VALUE <i>(SHOULDER CLOD, INSIDE CHUCK ROLL, BRISKET)</i> | | \$510.57 | 19.71% |
| BUFFALO ROUND VALUE <i>(PEELED KNUCKLE, TOP ROUND, FLAT, EYE OF ROUND)</i> | | \$565.37 | 21.82% |
| BUFFALO THIN MEATS <i>(TRI-TIP, BALL-TIP, FLANK STEAK, BBQ RIB, SKIRT)</i> | | \$86.83 | 3.35% |
| BUFFALO TRIM 87% | | \$1,225.91 | 47.32% |
| | | TOTAL VALUE | % MARK-UP |
| | | \$3,291.56 | 127.05% |

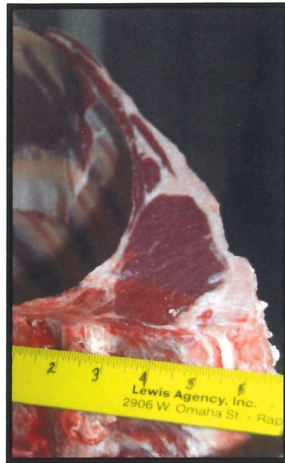
| WASTE ITEMS | LBS | % CARCASS WEIGHT |
|--------------|-------|------------------|
| FAT & KIDNEY | 33.05 | 5.20% |
| BONES | 107 | 16.85% |

| ANIMAL | SEX | BF INCHES | PYG | ADJ. PYG | HCW | REA | %KPH | YGM | YGA | LEAN | SKEL | MARB | MIN. L | SHEAR FORCE |
|--------|------|-----------|-----|----------|-----|------|------|-----|-----|------|------|------|--------|-------------|
| | BULL | | 2.6 | 2.6 | 635 | 11.5 | 2.5 | 2.4 | 2.4 | B10 | B50 | PD80 | 37.4 | 3.09 kg |

2015 Cutting Edge Carcass Contest Bulls



(Yellow 42)



This bull was brought to the Young Guns host ranch as a calf. Upon arrival at the host ranch, the calf was put on free choice pellets and grass hay until mid-April when the pellets were removed.

The bull was turned out to grass on May 8, 2014, with two pounds of cake 2x per week. The bull was brought in off grass on August 22 and put on free choice pellets and grass hay until the bull was processed for the Young Guns class.

Weight on 1/13/15 was 1,094 pounds.

| LIVE BUFFALO WEIGHT | CARCASS WEIGHT | PER LB. VALUE | CARCASS VALUE |
|---|----------------|--------------------|-------------------------|
| | 592 | \$4.08 | \$2,415.36 |
| | | | % OF TOTAL VALUE |
| MIDDLE BUFFALO VALUE <i>(NY STRIP, TOP SIRLOIN BUTT, TENDERLOIN, RIB-EYE)</i> | | \$741.55 | 30.70% |
| BUFFALO CHUCK VALUE <i>(SHOULDER CLOD, INSIDE CHUCK ROLL, BRISKET)</i> | | \$478.95 | 19.83% |
| BUFFALO ROUND VALUE <i>(PEELED KNUCKLE, TOP ROUND, FLAT, EYE OF ROUND)</i> | | \$505.47 | 20.93% |
| BUFFALO THIN MEATS <i>(TRI-TIP, BALL-TIP, FLANK STEAK, BBQ RIB, SKIRT)</i> | | \$75.35 | 3.12% |
| BUFFALO TRIM 85% | | \$1,259.70 | 52.15% |
| | | TOTAL VALUE | % MARK-UP |
| | | \$3,061.02 | 126.73% |

| WASTE ITEMS | LBS | % CARCASS WEIGHT |
|--------------|------|------------------|
| FAT & KIDNEY | 27.3 | 4.61% |
| BONES | 90 | 15.20% |

| ANIMAL | SEX | BF | PYG | ADJ. | HCW | REA | %KPH | YGM | YGA | LEAN | SKEL | MARB | MIN. L | SHEAR |
|--------|------|--------|-----|------|-----|------|------|-----|-----|------|------|------|--------|---------|
| | BULL | INCHES | 2.7 | PYG | 592 | 10.1 | 2.5 | 2.8 | 3.0 | B70 | B20 | TR10 | 33.1 | 3.39 kg |

2015 Cutting Edge Carcass Contest Bulls



(Yellow 63)



This bull was brought to the Young Guns host ranch as a calf. Upon arrival at the host ranch, the calf was put on free choice pellets and grass hay until mid-April when the pellets were removed.

The bull was turned out to grass on May 8, 2014, with two pounds of cake 2x per week. The bull was brought in off grass on August 22 and put on free choice pellets and grass hay until the bull was processed for the Young Guns class.

Weight on 1/13/15 was 1,196 pounds.

| LIVE BUFFALO WEIGHT | CARCASS WEIGHT | PER LB. VALUE | CARCASS VALUE |
|--|----------------|--------------------|-------------------------|
| | 654 | \$4.08 | \$2,668.32 |
| | | | % OF TOTAL VALUE |
| MIDDLE BUFFALO VALUE (NY STRIP, TOP SIRLOIN BUTT, TENDERLOIN, RIB-EYE) | | \$898.76 | 33.68% |
| BUFFALO CHUCK VALUE (SHOULDER CLOD, INSIDE CHUCK ROLL, BRISKET) | | \$528.24 | 19.80% |
| BUFFALO ROUND VALUE (PEELED KNUCKLE, TOP ROUND, FLAT, EYE OF ROUND) | | \$542.18 | 20.32% |
| BUFFALO THIN MEATS (TRI-TIP, BALL-TIP, FLANK STEAK, BBQ RIB, SKIRT) | | \$80.13 | 3.00% |
| BUFFALO TRIM 87% | | \$1,330.49 | 49.86% |
| | | TOTAL VALUE | % MARK-UP |
| | | \$3,379.80 | 126.66% |

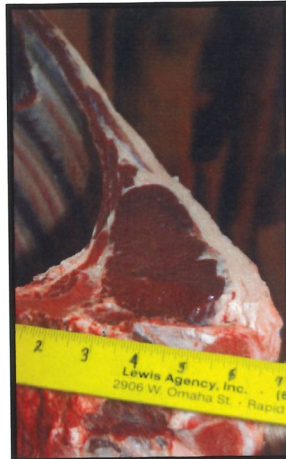
| WASTE ITEMS | LBS | % CARCASS WEIGHT |
|--------------|-----|------------------|
| FAT & KIDNEY | 36 | 5.50% |
| BONES | 103 | 15.75% |

| ANIMAL | SEX | BF INCHES | PYG | ADJ. PYG | HCW | REA | %KPH | YGM | YGA | LEAN | SKEL | MARB | MIN. L | SHEAR FORCE |
|--------|------|-----------|-----|----------|-----|------|------|-----|-----|------|------|------|--------|-------------|
| | BULL | | 4 | 3.7 | 654 | 11.2 | 2.0 | 4.0 | 3.7 | B30 | A90 | SL60 | 36.6 | 4.24 kg |

2015 Cutting Edge Carcass Contest Bulls



(Yellow 56)
Bull is the one behind
the front bull



This bull was brought to the Young Guns host ranch as a calf. Upon arrival at the host ranch, the calf was put on free choice pellets and grass hay until mid-April when the pellets were removed.

The bull was turned out to grass on May 8, 2014, with two pounds of cake 2x per week. The bull was brought in off grass on August 22 and put on free choice pellets and grass hay until the bull was processed for the Young Guns class.

Weight on 1/13/15 was 1,199 pounds.

| LIVE BUFFALO WEIGHT | CARCASS WEIGHT | PER LB. VALUE | CARCASS VALUE |
|--|----------------|--------------------|-------------------------|
| | 643 | \$4.08 | \$2,623.44 |
| | | | % OF TOTAL VALUE |
| MIDDLE BUFFALO VALUE (NY STRIP, TOP SIRLOIN BUTT, TENDERLOIN, RIB-EYE) | | \$882.92 | 33.66% |
| BUFFALO CHUCK VALUE (SHOULDER CLOD, INSIDE CHUCK ROLL, BRISKET) | | \$517.39 | 19.72% |
| BUFFALO ROUND VALUE (PEELED KNUCKLE, TOP ROUND, FLAT, EYE OF ROUND) | | \$523.59 | 19.96% |
| BUFFALO THIN MEATS (TRI-TIP, BALL-TIP, FLANK STEAK, BBQ RIB, SKIRT) | | \$93.34 | 3.56% |
| BUFFALO TRIM 85% | | \$1,276.80 | 48.67% |
| | | TOTAL VALUE | % MARK-UP |
| | | \$3,294.04 | 125.56% |

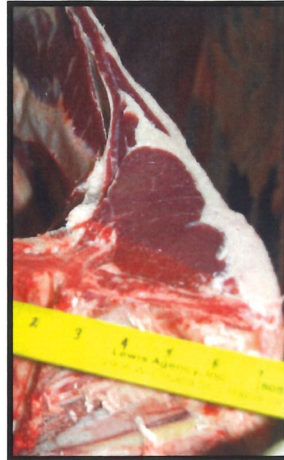
| WASTE ITEMS | LBS | % CARCASS WEIGHT |
|--------------|-------|------------------|
| FAT & KIDNEY | 21.85 | 3.40% |
| BONES | 112 | 17.42% |

| ANIMAL | SEX | BF INCHES | PYG | ADJ. PYG | HCW | REA | %KPH | YGM | YGA | LEAN | SKEL | MARB | MIN. L | SHEAR FORCE |
|--------|------|-----------|-----|----------|-----|-----|------|-----|-----|------|------|------|--------|-------------|
| | BULL | | 3.3 | 3.3 | 643 | 11 | 2.0 | 3.4 | 3.4 | C10 | B80 | TR10 | 33.5 | 5.12 kg |

2015 Cutting Edge Carcass Contest Bulls



(Red 21)



No data available.

| LIVE BUFFALO WEIGHT | CARCASS WEIGHT | PER LB. VALUE | CARCASS VALUE |
|---|----------------|--------------------|-------------------------|
| | 678 | \$4.08 | \$2,766.24 |
| | | | % OF TOTAL VALUE |
| MIDDLE BUFFALO VALUE <i>(NY STRIP, TOP SIRLOIN BUTT, TENDERLOIN, RIB-EYE)</i> | | \$916.58 | 33.13% |
| BUFFALO CHUCK VALUE <i>(SHOULDER CLOD, INSIDE CHUCK ROLL, BRISKET)</i> | | \$539.40 | 19.50% |
| BUFFALO ROUND VALUE <i>(PEELED KNUCKLE, TOP ROUND, FLAT, EYE OF ROUND)</i> | | \$579.43 | 20.95% |
| BUFFALO THIN MEATS <i>(TRI-TIP, BALL-TIP, FLANK STEAK, BBQ RIB, SKIRT)</i> | | \$89.58 | 3.24% |
| BUFFALO TRIM 86% | | \$1,344.41 | 48.60% |
| | | TOTAL VALUE | % MARK-UP |
| | | \$3,469.40 | 125.42% |

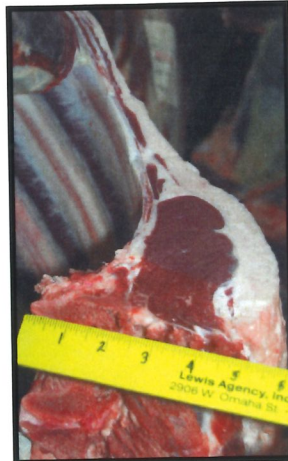
| WASTE ITEMS | LBS | % CARCASS WEIGHT |
|--------------|------|------------------|
| FAT & KIDNEY | 42.9 | 6.33% |
| BONES | 103 | 15.19% |

| ANIMAL | SEX | BF | PYG | ADJ. | HCW | REA | %KPH | YGM | YGA | LEAN | SKEL | MARB | MIN. L | SHEAR |
|--------|------|--------|-----|------|-----|------|------|-----|-----|------|------|------|--------|---------|
| | BULL | INCHES | 2.8 | PYG | 678 | 10.6 | 2.5 | 3.0 | 3.2 | A70 | B60 | SL30 | 33.7 | 2.85 kg |

2015 Cutting Edge Carcass Contest Bulls



(Red 18)



No data available.

| LIVE BUFFALO WEIGHT | CARCASS WEIGHT | PER LB. VALUE | CARCASS VALUE |
|---|----------------|--------------------|-------------------------|
| | 622 | \$4.08 | \$2,537.76 |
| | | | % OF TOTAL VALUE |
| MIDDLE BUFFALO VALUE <i>(NY STRIP, TOP SIRLOIN BUTT, TENDERLOIN, RIB-EYE)</i> | | \$796.45 | 31.38% |
| BUFFALO CHUCK VALUE <i>(SHOULDER CLOD, INSIDE CHUCK ROLL, BRISKET)</i> | | \$451.05 | 17.77% |
| BUFFALO ROUND VALUE <i>(PEELED KNUCKLE, TOP ROUND, FLAT, EYE OF ROUND)</i> | | \$548.65 | 21.62% |
| BUFFALO THIN MEATS <i>(TRI-TIP, BALL-TIP, FLANK STEAK, BBQ RIB, SKIRT)</i> | | \$79.06 | 3.12% |
| BUFFALO TRIM 83% | | \$1,221.00 | 48.11% |
| | | TOTAL VALUE | % MARK-UP |
| | | \$3,096.21 | 122.01% |

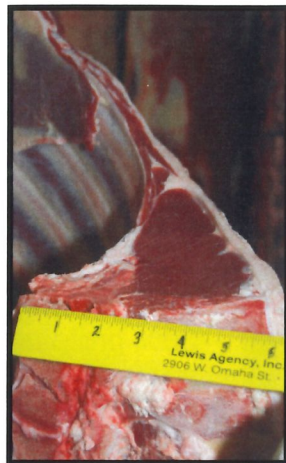
| WASTE ITEMS | LBS | % CARCASS WEIGHT |
|-------------------------|-------|------------------|
| FAT & KIDNEY | 42.75 | 6.87% |
| BONES | 92 | 14.79% |

| ANIMAL | SEX | BF INCHES | PYG | ADJ. PYG | HCW | REA | %KPH | YGM | YGA | LEAN | SKEL | MARB | MIN. L | SHEA FORC |
|--------|------|-----------|-----|----------|-----|-----|------|-----|-----|------|------|------|--------|-----------|
| | BULL | | 3.9 | 4 | 622 | 9.9 | 2.5 | 4.2 | 4.3 | A80 | B10 | SL20 | 36.2 | 3.67 k |

2015 Cutting Edge Carcass Contest Bulls



(No Tag)
Bull was disqualified.
Did not meet minimum
HHW of 525 pounds.



This bull was weaned in March of 2014. He was put on a ration of 20% grain, 50% oatlage and silage and 30% hay. In September of 2014, his finishing ration was changed to 35% grain, 55% oatlage and silage and 10% hay.

Bull's final weight at home was approximately 1,020 pounds.

| LIVE BUFFALO WEIGHT | CARCASS WEIGHT | PER LB. VALUE | CARCASS VALUE |
|--|----------------|--------------------|-------------------------|
| | 518 | \$4.08 | \$2,113.44 |
| | | | % OF TOTAL VALUE |
| MIDDLE BUFFALO VALUE (NY STRIP, TOP SIRLOIN BUTT, TENDERLOIN, RIB-EYE) | | \$706.84 | 33.44% |
| BUFFALO CHUCK VALUE (SHOULDER CLOD, INSIDE CHUCK ROLL, BRISKET) | | \$421.60 | 19.95% |
| BUFFALO ROUND VALUE (PEELED KNUCKLE, TOP ROUND, FLAT, EYE OF ROUND) | | \$470.17 | 22.25% |
| BUFFALO THIN MEATS (TRI-TIP, BALL-TIP, FLANK STEAK, BBQ RIB, SKIRT) | | \$75.18 | 3.56% |
| BUFFALO TRIM 87% | | \$1,057.42 | 50.03% |
| | | TOTAL VALUE | % MARK-UP |
| | | \$2,731.21 | 129.23% |

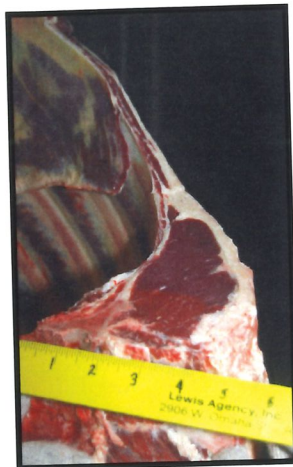
| WASTE ITEMS | LBS | % CARCASS WEIGHT |
|--------------|-------|------------------|
| FAT & KIDNEY | 20.65 | 3.99% |
| BONES | 82 | 15.83% |

| ANIMAL | SEX | BF INCHES | PYG | ADJ. PYG | HCW | REA | %KPH | YGM | YGA | LEAN D20 | SKEL A80 | MARB TR70 | MIN. L | SHEAR FORCE |
|--------|------|-----------|-----|----------|-----|------|------|-----|-----|----------|----------|-----------|--------|-------------|
| | BULL | | 2.3 | 2.3 | 518 | 12.4 | 2.0 | 1.4 | 1.4 | | | | 34.6 | 6.23 kg |

2015 Cutting Edge Carcass Contest Heifers



First Place Heifer
(Yellow 5)



This heifer was brought to the Girlz Gone Wild host ranch as a yearling. Upon arrival at the host ranch, the she was put in a lot with the group and fed two pounds of 20% cake per head, per day until turnout.

The heifer was turned out to pasture in early May 2014 until the group was gathered the first week of January 2015. In December the heifers were caked with a 30% protein cake at three pounds per head every other day with free choice mineral and occassional hay. This heifer was open and weight on 1/13/15 was 922 pounds.

| LIVE BUFFALO WEIGHT | CARCASS WEIGHT | PER LB. VALUE | CARCASS VALUE |
|--|----------------|--------------------|-------------------------|
| | 488 | \$3.94 | \$1,922.72 |
| | | | % OF TOTAL VALUE |
| MIDDLE BUFFALO VALUE (NY STRIP, TOP SIRLOIN BUTT, TENDERLOIN, RIB-EYE) | | \$659.04 | 34.28% |
| BUFFALO CHUCK VALUE (SHOULDER CLOD, INSIDE CHUCK ROLL, BRISKET) | | \$394.94 | 20.54% |
| BUFFALO ROUND VALUE (PEELED KNUCKLE, TOP ROUND, FLAT, EYE OF ROUND) | | \$469.29 | 24.41% |
| BUFFALO THIN MEATS (TRI-TIP, BALL-TIP, FLANK STEAK, BBQ RIB, SKIRT) | | \$69.61 | 3.62% |
| BUFFALO TRIM 86% | | \$978.51 | 50.89% |
| | | TOTAL VALUE | % MARK-UP |
| | | \$2,571.39 | 133.74% |

| WASTE ITEMS | LBS | % CARCASS WEIGHT |
|--------------|------|------------------|
| FAT & KIDNEY | 18.7 | 3.83% |
| BONES | 77 | 15.78% |

| ANIMAL | SEX | BF INCHES | PYG | ADJ. PYG | HCW | REA | %KPH | YGM | YGA | LEAN D30 | SKEL C50 | MARB SL10 | MIN. L | SHE/FOR |
|--------|-----|-----------|-----|----------|-----|-----|------|-----|-----|----------|----------|-----------|--------|---------|
| | HFR | | 3 | 3 | 488 | 8.3 | 2.0 | 3.4 | 3.4 | | | | 35.4 | 4.19 |

2015 Cutting Edge Carcass Contest Heifers



(White 10)



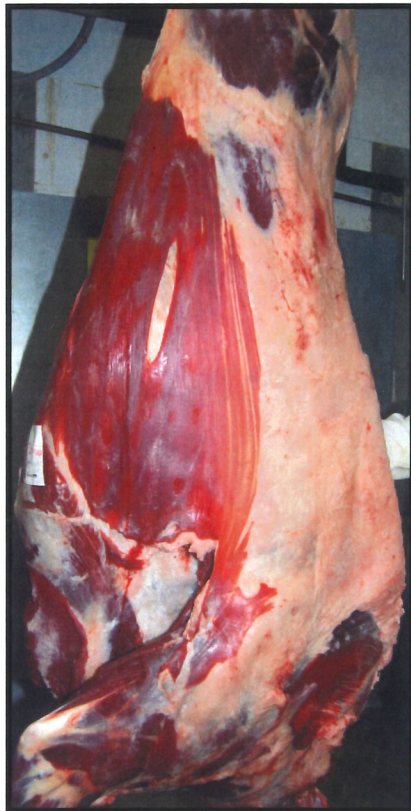
This heifer was weaned on November 2, 2013. Average weaning weight was 420 pounds. She was put on a ration of 20% grain, 50% oatlage and silage and 30% hay. In September of 2014, her finishing ration was changed to 35% grain, 55% oatlage and silage and 10% hay.

| LIVE BUFFALO WEIGHT | CARCASS WEIGHT | PER LB. VALUE | CARCASS VALUE |
|--|----------------|--------------------|-------------------------|
| | 518 | \$3.94 | \$2,040.92 |
| | | | % OF TOTAL VALUE |
| MIDDLE BUFFALO VALUE (NY STRIP, TOP SIRLOIN BUTT, TENDERLOIN, RIB-EYE) | | \$699.00 | 34.25% |
| BUFFALO CHUCK VALUE (SHOULDER CLOD, INSIDE CHUCK ROLL, BRISKET) | | \$411.06 | 20.14% |
| BUFFALO ROUND VALUE (PEELED KNUCKLE, TOP ROUND, FLAT, EYE OF ROUND) | | \$457.27 | 22.41% |
| BUFFALO THIN MEATS (TRI-TIP, BALL-TIP, FLANK STEAK, BBQ RIB, SKIRT) | | \$68.51 | 3.36% |
| BUFFALO TRIM 86% | | \$1,032.83 | 50.61% |
| | | TOTAL VALUE | % MARK-UP |
| | | \$2,668.67 | 130.76% |

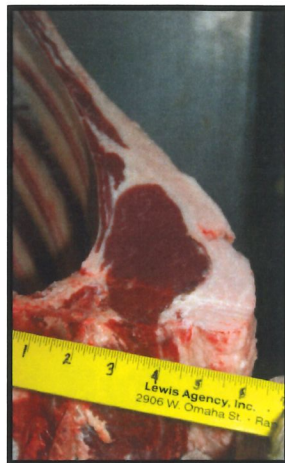
| WASTE ITEMS | LBS | % CARCASS WEIGHT |
|--------------|------|------------------|
| FAT & KIDNEY | 30.4 | 5.87% |
| BONES | 79 | 15.25% |

| ANIMAL | SEX | BF | PYG | ADJ. | HCW | REA | %KPH | YGM | YGA | LEAN | SKEL | MARB | MIN. L | SHEAR |
|--------|-----|--------|-----|------|-----|-----|------|-----|-----|------|------|------|--------|---------|
| | HFR | INCHES | 5 | PYG | 518 | 8.9 | 1.5 | 5.4 | 4.8 | B30 | B30 | SL80 | 34.8 | 3.03 kg |

2015 Cutting Edge Carcass Contest Heifers



(Red 99)



No data available.

| LIVE BUFFALO WEIGHT | CARCASS WEIGHT | PER LB. VALUE | CARCASS VALUE |
|--|----------------|--------------------|-------------------------|
| | 531 | \$3.94 | \$2,092.14 |
| | | | % OF TOTAL VALUE |
| MIDDLE BUFFALO VALUE (NY STRIP, TOP SIRLOIN BUTT, TENDERLOIN, RIB-EYE) | | \$711.31 | 34.00% |
| BUFFALO CHUCK VALUE (SHOULDER CLOD, INSIDE CHUCK ROLL, BRISKET) | | \$394.63 | 18.86% |
| BUFFALO ROUND VALUE (PEELED KNUCKLE, TOP ROUND, FLAT, EYE OF ROUND) | | \$465.19 | 22.24% |
| BUFFALO THIN MEATS (TRI-TIP, BALL-TIP, FLANK STEAK, BBQ RIB, SKIRT) | | \$75.63 | 3.61% |
| BUFFALO TRIM 85% | | \$1,037.40 | 49.59% |
| | | TOTAL VALUE | % MARK-UP |
| | | \$2,684.16 | 128.30% |

| WASTE ITEMS | LBS | % CARCASS WEIGHT |
|--------------|-------|------------------|
| FAT & KIDNEY | 45.95 | 8.65% |
| BONES | 75 | 14.12% |

| ANIMAL | SEX | BF INCHES | PYG | ADJ. PYG | HCW | REA | %KPH | YGM | YGA | LEAN | SKEL | MARB | MIN. L | SHEAR FORCE |
|--------|-----|-----------|-----|----------|-----|-----|------|-----|-----|------|------|------|--------|-------------|
| | HFR | | 4.8 | 4.1 | 531 | 8.8 | 2.5 | 5.1 | 4.4 | C70 | C30 | SM30 | 36.3 | 2.93 kg |

AVERAGE BULL

| LIVE BUFFALO WEIGHT | CARCASS WEIGHT | PER LB. VALUE | CARCASS VALUE |
|---|----------------|--------------------|-------------------------|
| | 617.56 | \$4.08 | \$2,519.64 |
| | | | % OF TOTAL VALUE |
| MIDDLE BUFFALO VALUE <i>(NY STRIP, TOP SIRLOIN BUTT, TENDERLOIN, RIB-EYE)</i> | | \$847.55 | 33.64% |
| BUFFALO CHUCK VALUE <i>(SHOULDER CLOD, INSIDE CHUCK ROLL, BRISKET)</i> | | \$498.54 | 19.79% |
| BUFFALO ROUND VALUE <i>(PEELED KNUCKLE, TOP ROUND, FLAT, EYE OF ROUND)</i> | | \$537.74 | 21.34% |
| BUFFALO THIN MEATS <i>(TRI-TIP, BALL-TIP, FLANK STEAK, BBQ RIB, SKIRT)</i> | | \$80.00 | 3.18% |
| BUFFALO TRIM 86% | | \$1,245.55 | 49.43% |
| | | TOTAL VALUE | % MARK-UP |
| | | \$3,209.38 | 127.37% |

| WASTE ITEMS | LBS | % CARCASS WEIGHT |
|--------------|-------|------------------|
| FAT & KIDNEY | 28.78 | 4.66% |
| BONES | 97.75 | 15.83% |

AVERAGE HEIFER

| LIVE BUFFALO WEIGHT | CARCASS WEIGHT | PER LB. VALUE | CARCASS VALUE |
|---|----------------|--------------------|-------------------------|
| | 521.5 | \$3.94 | \$2,054.71 |
| | | | % OF TOTAL VALUE |
| MIDDLE BUFFALO VALUE <i>(NY STRIP, TOP SIRLOIN BUTT, TENDERLOIN, RIB-EYE)</i> | | \$704.47 | 34.29% |
| BUFFALO CHUCK VALUE <i>(SHOULDER CLOD, INSIDE CHUCK ROLL, BRISKET)</i> | | \$394.51 | 19.20% |
| BUFFALO ROUND VALUE <i>(PEELED KNUCKLE, TOP ROUND, FLAT, EYE OF ROUND)</i> | | \$483.42 | 23.53% |
| BUFFALO THIN MEATS <i>(TRI-TIP, BALL-TIP, FLANK STEAK, BBQ RIB, SKIRT)</i> | | \$70.63 | 3.44% |
| BUFFALO TRIM 84% | | \$1,038.02 | 50.52% |
| | | TOTAL VALUE | % MARK-UP |
| | | \$2,691.05 | 130.97% |

| WASTE ITEMS | LBS | % CARCASS WEIGHT |
|--------------|-------|------------------|
| FAT & KIDNEY | 29.28 | 5.61% |
| BONES | 78.33 | 15.02% |

2015 Cutting Edge Carcass Contest Consignors

Blue Valley Ranch • Kremmling, CO

Josh Richert, Manager

Cammack Buffalo Ranch • Stoneville, SD

John, Melanie, Mike & Lane Cammack

Cold Creek Buffalo Ranch • Windsor, CO

Boyd & Allison Meyer

Jumpoff Buffalo Ranch • Buffalo, SD

Scott & Susan Peterson

Quarter Circle Y • Mobridge, SD

Monty & Tammy Hepper

Sheyenne River Bison Ranch • Harvey, ND

David & Diana Lauth

Slim Buttes Buffalo Ranch • Buffalo, SD

Sandy and Jacki Limpert

Tatanka Hills • Lake Norden, SD

Kevin & Joan Stormo

777 Ranch • Hermosa, SD

Mimi Hillenbrand, Owner, Moritz Espy, Manager

2015 Cutting Edge Carcass Contest Sponsors

Longreach Buffalo Company

Kelly Hardy, Wendy Hutchinson & Roy Liedtke

Holcomb Buffalo Ranch

Zane Holcomb

North Dakota Buffalo Association

Western Buffalo Company

Bruce & Martha Anderson

Slim Buttes Buffalo Ranch

Sandy & Jacki Limpert

Longreach Buffalo Company • Weston, WY

Kelly Hardy, Wendy Hutchinson & Roy Liedtke