

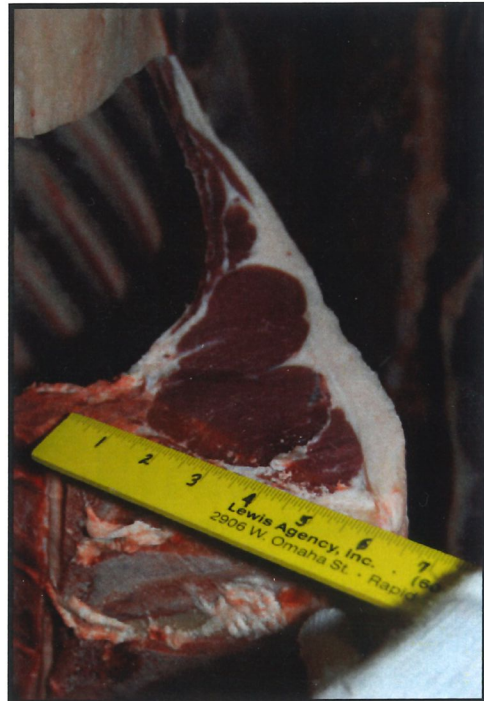


**Thank you to  
our 2009 Judge!**

**Dr. Duane Wulf  
South Dakota State University,  
Brookings, SD**



## **2009 REALITY BASED CARCASS CLASS**



Consignors entered in the 2009 Reality Based Carcass Class

BH - Beaver Creek Buffalo Co., Brad Beavers, Jefferson, SD  
BH - Blue Valley Ranch, manager Perry Handyside, Kremmling, CO  
BH - Mosquito Park Enterprises, Rod Sather, Vivian, SD  
B - Nolz Poor Farm Bison, Ed & Deanna Nolz, Sioux Falls, SD  
BH - Prairie Heights Bison - John & Jeanne Bowron, Luverne, MN  
B - Slim Buttes Buffalo Ranch, Brodie Limpert, Buffalo, SD  
BB - Slim Buttes Buffalo Ranch, Sandy & Jacki Limpert, Buffalo, SD

<u>Bull Winners</u>	<u>HHW</u>
1. Ed & Deanna Nolz	804
2. Rod Sather	596
3. John & Jeanne Bowron	627

<u>Heifer Winners</u>	<u>HHW</u>
1. Blue Valley Ranch	525
2. Brad & Connie Beavers	549
3. John & Jeanne Bowron	569

## DTBA 2002 Reality Based Carcass Class *Program Details*

The Dakota Territory Buffalo Association (DTBA) held the second Reality Based Carcass Class in conjunction with the 2002 Black Hills Buffalo Classic Show and Sale. Last year, the carcass class offered another dimension to the DTBA's already successful live animal show and sale. Through this new class, the association has been able to focus on and give attention to the driving force of the buffalo industry, quality meat production.

Buffalo ranchers produce some of the healthiest, most appetizing red meat in the world and consumers can and will continue to demand this meat product. With that in mind, the DTBA decided to again host a carcass class that will help to educate producers on the economic benefits of taking their bull calves all the way to slaughter weight. Additionally, for the first time ever in the buffalo industry, the DTBA opened up the contest to heifers. With the addition of 10 available spots for heifers, this contest will mark the first time any data has ever been recorded on slaughter heifers. A total of 20 entries were accepted, 10 each of bulls and heifers. Trophies will awarded for the first three places. There will also be a \$5,000 cash prize for the first place carcass in the bulls and another \$5,000 cash award for the highest placing female carcass.

The success of last year's contest was partly due to the unique nature of it. About a year and a half ago, Buffalo, SD producer, Sandy Limpert, approached Bruce Anderson of RC Western Meats in Rapid City, SD. What Limpert was suggesting was to do a carcass contest, but with a different twist. He wanted to have the contest winner determined based on the retail value of the meat the animal was able to put in the box. This is an idea that Limpert has been kicking around for a number of years and has been fine-tuning the details. Having been told it couldn't be done, that just spurred him on to find a way to do it. When he approached Anderson, Anderson was intrigued with the idea and also, being a large regional bison meat purveyor, wanted to know the results for his own personal experience. After much discussion and lots of fine tuning, the Dakota Territory Buffalo Association (DTBA) was the official host of the new Reality-Based Carcass Class.

The contest idea is simple. After the animals are delivered and a live weight obtained, they are then slaughtered. A hot hanging weight is recorded. After hanging in the cooler for a set amount of time, the carcasses are halved and then quartered. Under the watchful eye of an independent party, in this case, Dr. Robert Maddock of South Dakota State University, the meat is trimmed to a quarter inch of fat cover. All the fat that was trimmed off is weighed. Each cut is then weighed with a consistent, current value per pound put on them. The remaining bones, minus the trimmed off meat, are also weighed. A sample of burger from each carcass is cooked and the fat content measured. Anderson has developed a sliding scale in which to base value of the burger on its percentage of lean meat, meaning the leaner the meat, the more it was worth per pound.

Upon the completion of the contest, a sheet is made for each entry. It contains data such as the carcass weight, the carcass value, the middle value, the chuck value, the round value, the thin meats value and the trim. It also contains the waste items, including the fat and kidney and the bones. The winner is determined by the highest percentage of growth from the carcass value to the retail value.

So, what is accomplished by this reality-based contest? Limpert hopes that the data recorded and provided to the producers will help them understand their feeding program and how it affects the final product. From Anderson's point of view, it helps producers know what kind of animal will make the packer and the producer the most money. Over time, the records kept from this type of contest will help producers make genetic and production decisions that will help their yields and produce an efficient product. When the data from the first contest was released to the public, there were many calls to the association noting that this industry first had done it's job in generating the beginning of a new database for buffalo meat producers.

Producers who entered the contest this year were asked to provide as much background data as possible on their animal, including genetic history, growth progress, feeding program, traveling information, nearly anything that might be recordable. Once again, photographs of the live animals were taken and photographs were taken throughout the entire process to record each entry and help producers and consumers to better understand the value of the meat they produce and consume.

# WHAT DOES THAT MEAN? A GLOSSARY OF TERMS

## **PYG: Preliminary Yield Grade**

This is determined by the fat depth opposite the ribeye. A .5 PYG unit increase is equivalent to a .2 inch increase in fat depth.

## **Adj. PYG: Adjusted Preliminary Yield Grade**

An adjustment of the PYG according to the fat covering over the entire carcass.

## **HCW: Hot Carcass Weight**

The weight of the carcass immediately after slaughter.

## **REA: Ribeye Area**

The surface area of the longissimus muscle when a carcass is ribbed between the 5th and 6th rib.

## **KPH: Kidney, Pelvic, and Heart Fat**

This the percentage of internal fat in a carcass as compared to the carcass weight.

## **YGM: Measured Yield Grade**

The combination of PYG, HCW, REA, and KPH are components of the YGM value. 1.0 is the lowest yield grade, which means it is the highest cutability, having the highest lean to fat ratio. A 5.9 is the highest and least desirable yield grade, meaning it has the lowest lean to fat ratio.

## **YGA: Adjusted Yield Grade**

The adjusted yield grade is similar to the measured yield grade, except the Adjusted PYG is used rather than the original PYG. This is a more representative number of the carcass as a whole.

## **MAT. LEAN: Lean Maturity**

Lean maturity is based on the color of the ribeye. A lighter color is more youthful and receives a lower letter/number combination. Maturity A0 is the youngest, while E100 is the oldest.

## **MAT. SKEL: Skeletal Maturity**

Skeletal maturity is based on the amount of cartilage that is remaining on the vertebrae. More cartilage is more youthful. Again, A0 is the youngest, while E100 is the oldest (showing no cartilage).

## **MARB: Marbling**

Marbling is the amount of intramuscular fat within the ribeye. The marbling levels which occur in this data from the least amount of intramuscular fat to the greatest are as follows: Practically Devoid (PD), Traces (TR), Slight (SL), and Small (SM). A number follows to indicate how much marbling is present beyond the minimum requirement for the grade. So, a SL50 is in the mid-range of the slight score.

## **LEAN COLOR L: L Score on Lean Color**

The L score is determined by a colorimeter that gives a reading of whiteness or reflectance of the ribeye. So a higher number means lighter color, while a lower number is a darker color.

## **SHEAR FORCE**

The number is the kilograms of force it takes to shear through a 1 centimeter thick core sample from a steak. A low number indicates a tenderer piece of meat, and a higher number is tougher.

## 2009 Reality Based Carcass Class Consignors

### **Beaver Creek Buffalo Co. • Fairfax, SD**

Brad and Connie Beavers, Owners - Brad Adams, Manager

### **Blue Valley Ranch • Kremmling, CO**

Perry Handyside, Manager - Tim Robertson, Livestock Foreman

### **Mosquito Park Enterprises • Vivian, SD**

Rod Sather, Owner - Tom Junk, Manager

### **Nolz Poor Farm Bison • Sioux Falls, SD**

Ed and Deanna Nolz

### **Prairie Heights Bison • Luverne, MN**

John & Jeanne Bowron

### **Slim Buttes Buffalo Ranch • Buffalo, SD**

Brodie Limpert

### **Slim Buttes Buffalo Ranch • Buffalo, SD**

Sandy and Jacki Limpert

## 2009 Reality Based Carcass Class Sponsors

### **Nolz Poor Farm Bison • Sioux Falls, SD**

Ed and Deanna Nolz

### **Western Buffalo Company • Rapid City, SD**

Bruce Anderson

### **Scranton Equity Feeds • Scranton, ND**

Kelly Schumacher, Sales Representative

### **Renner Corner Locker • Renner, SD**

Dean & Sandy Sorum

### **Diesel Machinery, Inc. • Rapid City, SD**

Mark Barry, Branch Manager



Bull

Final Live Weight At Home - 1,411 pounds

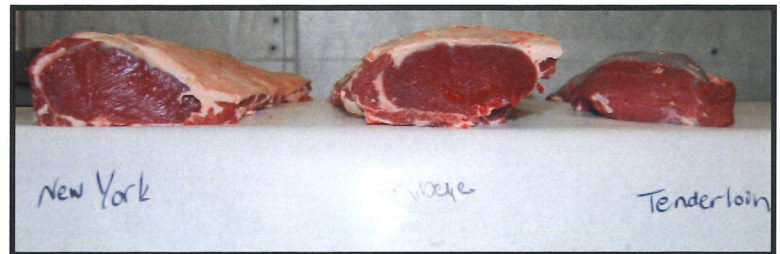
Hot Hanging Weight - 804 pounds

Weaned in January 2008

Weaning Weight - 632 pounds

The bull was fed hay and some grain for the first winter. He was out on grass for the first summer. He was finished on prairie grass and a corn/oat grain mixture of 3 to 4 pounds per day. He was on the finish ration for 131 days.

# 2009 REALITY BASED CARCASS CLASS



LIVE BUFFALO WEIGHT	CARCASS WEIGHT	PER LB. VALUE	CARCASS VALUE	
	804	\$2.41	\$1,937.64	
			<b>% OF TOTAL VALUE</b>	
<b>MIDDLE BUFFALO VALUE</b> (NY STRIP, TOP SIRLOIN BUTT, TENDERLOIN, RIB-EYE)		\$882.52	45.55%	
<b>BUFFALO CHUCK VALUE</b> (SHOULDER CLOD, INSIDE CHUCK ROLL, BRISKET)		\$387.19	19.98%	
<b>BUFFALO ROUND VALUE</b> (PELLED KNUCKLE, TOP ROUND, FLAT, EYE OF ROUND)		\$402.96	20.80%	
<b>BUFFALO THIN MEATS</b> (TRI-TIP, BALL-TIP, FLANK STEAK, BBQ RIB, SKIRT)		\$63.86	3.30%	
<b>BUFFALO TRIM 89%</b>		\$773.22	39.91%	
		<b>TOTAL VALUE</b>	<b>% MARK-UP</b>	
		\$2,509.75	129.53%	

WASTE ITEMS	LBS	% CARCASS WEIGHT
FAT & KIDNEY	35.25	4.38%
BONES	133	16.54%

ANIMAL	SEX	BF INCHES	PYG	ADJ. PYG	HCW	REA	%KPH	YGM	YGA	LEAN	SKEL	MARB	MIN. L	SHEAR FORCE
	BULL	0.48	3.2	2.8	804	11.6	1.0	3.9	3.5	C30	D60	TR30	34.6	5.6



Bull

Final Live Weight At Home - 1,075 pounds

Hot Hanging Weight - 596 pounds

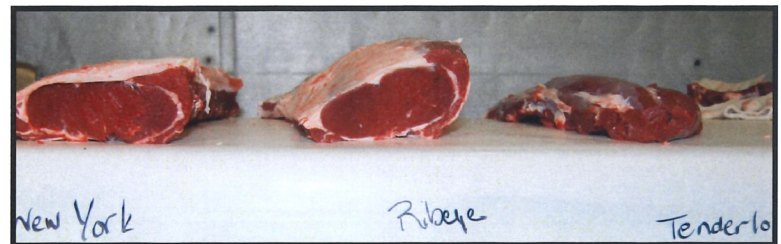
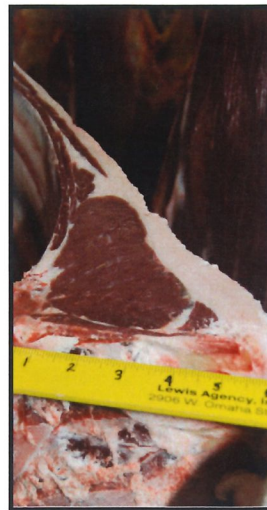
Weaned January 2008

Weaning Weight - 418 pounds

The bull was fed a mixed ration and hay for the first winter and summer. He was on a ration of straw and corn, alfalfa, pellet, dried distiller's grain, minerals and vitamins for finish feed. The bull was on the finish ration for 120 days.



# 2009 REALITY BASED CARCASS CLASS



LIVE BUFFALO WEIGHT	CARCASS WEIGHT	PER LB. VALUE	CARCASS VALUE
	596	\$2.41	\$1,436.36
			<b>% OF TOTAL VALUE</b>
<b>MIDDLE BUFFALO VALUE</b> (NY STRIP, TOP SIRLOIN BUTT, TENDERLOIN, RIB-EYE)		\$624.18	43.46%
<b>BUFFALO CHUCK VALUE</b> (SHOULDER CLOD, INSIDE CHUCK ROLL, BRISKET)		\$276.63	19.26%
<b>BUFFALO ROUND VALUE</b> (PELLED KNUCKLE, TOP ROUND, FLAT, EYE OF ROUND)		\$310.90	21.64%
<b>BUFFALO THIN MEATS</b> (TRI-TIP, BALL-TIP, FLANK STEAK, BBQ RIB, SKIRT)		\$52.96	3.69%
<b>BUFFALO TRIM 87%</b>		\$544.88	37.93%
		<b>TOTAL VALUE</b>	<b>% MARK-UP</b>
		\$1,809.55	125.98%

WASTE ITEMS	LBS	% CARCASS WEIGHT
FAT & KIDNEY	28.2	4.73%
BONES	110	18.46%

ANIMAL	SEX	BF INCHES	PYG	ADJ. PYG	HCW	REA	%KPH	YGM	YGA	LEAN	SKEL	MARB	MIN. L	SHEAR FORCE
	BULL	0.32	2.8	2.6	596	9.6	1.0	3.4	3.2	B60	A80	TR30	35.8	11.2

Sather



Bull

Final Live Weight At Home - 1110 pounds  
Hot Hanging Weight - 627 pounds

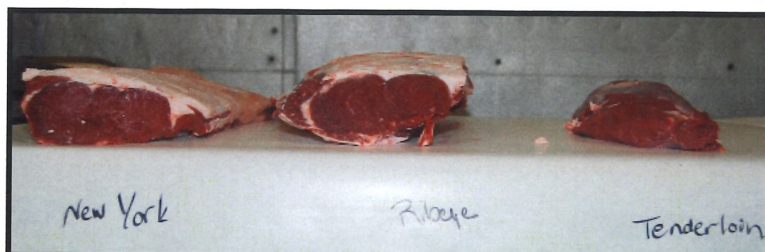
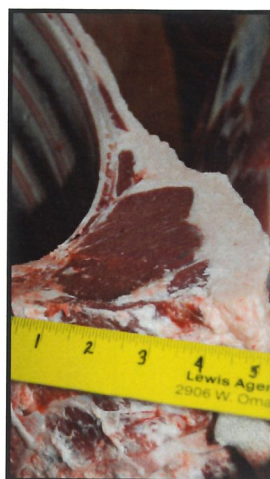
Weaned on February 12, 2008

Weaning Weight - 500 pounds

The bull was fed oats, screening pellets and dried distillers grain and grass hay for the first winter. The first summer he was fed the same ration with increasing amounts of dried distillers grain. He was on a finish ration of oats, screening pellets, dried distillers grain, ground ear corn mix and grass hay. The bull was on the finish ration for 150 days.

The bull's mother weighed 1260 pounds.

# 2009 REALITY BASED CARCASS CLASS



LIVE BUFFALO WEIGHT	CARCASS WEIGHT	PER LB. VALUE	CARCASS VALUE
	627	\$2.41	\$1,511.07
			<b>% OF TOTAL VALUE</b>
<b>MIDDLE BUFFALO VALUE</b> (NY STRIP, TOP SIRLOIN BUTT, TENDERLOIN, RIB-EYE)		\$662.77	43.86%
<b>BUFFALO CHUCK VALUE</b> (SHOULDER CLOD, INSIDE CHUCK ROLL, BRISKET)		\$273.92	18.13%
<b>BUFFALO ROUND VALUE</b> (PELLED KNUCKLE, TOP ROUND, FLAT, EYE OF ROUND)		\$338.86	22.43%
<b>BUFFALO THIN MEATS</b> (TRI-TIP, BALL-TIP, FLANK STEAK, BBQ RIB, SKIRT)		\$56.13	3.71%
<b>BUFFALO TRIM</b> 86%		\$558.90	36.99%
		<b>TOTAL VALUE</b>	<b>% MARK-UP</b>
		\$1,890.58	125.12%

WASTE ITEMS	LBS	% CARCASS WEIGHT
FAT & KIDNEY	38.4	6.12%
BONES	997	15.47%

ANIMAL	SEX	BF INCHES	PYG	ADJ. PYG	HCW	REA	%KPH	YGM	YGA	LEAN	SKEL	MARB	MIN. L	SHEAR FORCE
	BULL	0.60	3.5	3.0	627	11.5	1.5	3.4	2.9	B70	A80	TR90	35.6	6.1



Bull

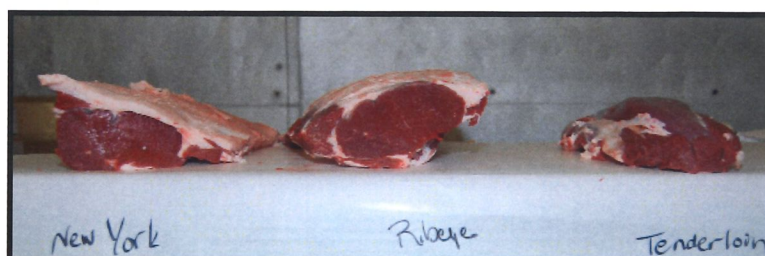
Final Live Weight At Home - N/A  
Hot Hanging Weight - 597 pounds

Weaned November 2007

Weaning Weight - 500 pounds

The bull was fed both grass hay and limited-bunk fed corn, oats, pellets and dried distiller's grain for the first winter. The first summer, he was fed corn, pellets, oats and dried distiller's grain. In the middle of summer, ration switched to straight pellets. The bull was finished on full feed corn, pellet mixture and free choice hay for approximately five months.

# 2009 REALITY BASED CARCASS CLASS



LIVE BUFFALO WEIGHT	CARCASS WEIGHT	PER LB. VALUE	CARCASS VALUE
	597	\$2.41	\$1,438.77
			<b>% OF TOTAL VALUE</b>
<b>MIDDLE BUFFALO VALUE</b> (NY STRIP, TOP SIRLOIN BUTT, TENDERLOIN, RIB-EYE)		\$658.92	45.80%
<b>BUFFALO CHUCK VALUE</b> (SHOULDER CLOD, INSIDE CHUCK ROLL, BRISKET)		\$268.72	18.68%
<b>BUFFALO ROUND VALUE</b> (PELLED KNUCKLE, TOP ROUND, FLAT, EYE OF ROUND)		\$296.40	20.60%
<b>BUFFALO THIN MEATS</b> (TRI-TIP, BALL-TIP, FLANK STEAK, BBQ RIB, SKIRT)		\$48.48	3.37%
<b>BUFFALO TRIM</b> 86%		\$512.20	35.60%
		<b>TOTAL VALUE</b>	<b>% MARK-UP</b>
		\$1,784.72	124.04%

WASTE ITEMS	LBS	% CARCASS WEIGHT
FAT & KIDNEY	36.9	6.18%
BONES	97	16.25%

ANIMAL	SEX	BF INCHES	PYG	ADJ. PYG	HCW	REA	%KPH	YGM	YGA	LEAN	SKEL	MARB	MIN. L	SHEAR FORCE
	BULL	0.56	3.4	3.0	597	10.3	1.0	3.7	3.3	B10	A60	SL10	35.4	4.8

Bewers



Bull

Final Live Weight At Home - 1,247 pounds

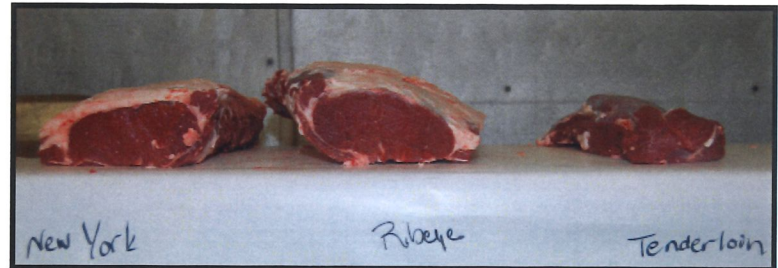
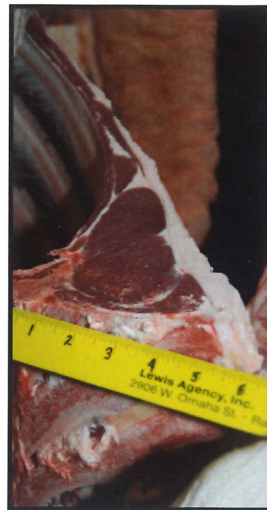
Hot Hanging Weight - 696 pounds

Weaned on November 30, 2007

Weaning Weight - 550 pounds

The bull was fed free choice pellets from weaning until slaughter. The bull was finished on grass hay and a processed grain pellet for 360 days.

# 2009 REALITY BASED CARCASS CLASS



LIVE BUFFALO WEIGHT	CARCASS WEIGHT	PER LB. VALUE	CARCASS VALUE
	696	\$2.41	\$1,677.36
			<b>% OF TOTAL VALUE</b>
<b>MIDDLE BUFFALO VALUE</b> (NY STRIP, TOP SIRLOIN BUTT, TENDERLOIN, RIB-EYE)		\$749.11	44.66%
<b>BUFFALO CHUCK VALUE</b> (SHOULDER CLOD, INSIDE CHUCK ROLL, BRISKET)		\$310.83	18.53%
<b>BUFFALO ROUND VALUE</b> (PELLED KNUCKLE, TOP ROUND, FLAT, EYE OF ROUND)		\$338.32	20.17%
<b>BUFFALO THIN MEATS</b> (TRI-TIP, BALL-TIP, FLANK STEAK, BBQ RIB, SKIRT)		\$62.20	3.71%
<b>BUFFALO TRIM</b> 86%		\$613.08	36.55%
		<b>TOTAL VALUE</b>	<b>% MARK-UP</b>
		\$2,073.54	123.62%

WASTE ITEMS	LBS	% CARCASS WEIGHT
FAT & KIDNEY	46.1	6.62%
BONES	125	17.96%

ANIMAL	SEX	BF INCHES	PYG	ADJ. PYG	HCW	REA	%KPH	YGM	YGA	LEAN	SKEL	MARB	MIN. L	SHEAR FORCE
	BULL	0.60	3.5	3.0	696	11.0	1.5	3.9	3.4	B50	C30	SL20	37.0	9.7

S. Linnet



Bull

Final Live Weight At Home - 1,160 pounds

Hot Hanging Weight - 658 pounds

Weaned on November 1, 2007

Weaning Weight - 562 pounds

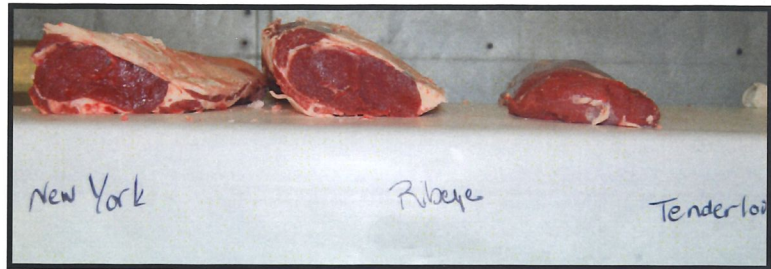
The bull was fed free choice alfalfa and grass hay for the first winter and was on irrigated grass pasture for the first summer. He was finished on a ration of corn and free choice alfalfa and grass hay for 90 days.

The bull's mother weighed 1,194 pounds on November 1, 2008.





# 2009 REALITY BASED CARCASS CLASS



LIVE BUFFALO WEIGHT	CARCASS WEIGHT	PER LB. VALUE	CARCASS VALUE	
	658	\$2.41	\$1,585.78	
				<b>% OF TOTAL VALUE</b>
<b>MIDDLE BUFFALO VALUE</b> (NY STRIP, TOP SIRLOIN BUTT, TENDERLOIN, RIB-EYE)		\$667.86	42.12%	
<b>BUFFALO CHUCK VALUE</b> (SHOULDER CLOD, INSIDE CHUCK ROLL, BRISKET)		\$279.79	17.64%	
<b>BUFFALO ROUND VALUE</b> (PEELED KNUCKLE, TOP ROUND, FLAT, EYE OF ROUND)		\$335.88	21.18%	
<b>BUFFALO THIN MEATS</b> (TRI-TIP, BALL-TIP, FLANK STEAK, BBQ RIB, SKIRT)		\$52.91	3.34%	
<b>BUFFALO TRIM 87%</b>		\$589.36	37.17%	
		<b>TOTAL VALUE</b>	<b>% MARK-UP</b>	
		\$1,925.80	121.44%	

WASTE ITEMS	LBS	% CARCASS WEIGHT
FAT & KIDNEY	44.9	6.82%
BONES	111	16.87%

ANIMAL	SEX	BF INCHES	PYG	ADJ. PYG	HCW	REA	%KPH	YGM	YGA	LEAN	SKEL	MARB	MIN. L	SHEAR FORCE
	BULL	0.64	3.6	2.8	658	10.2	1.5	4.1	3.3	C50	B60	TR60	35.6	13.7



Bull

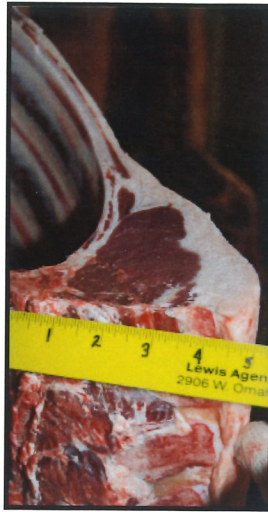
Final Live Weight At Home - 1,245 pounds

Hot Hanging Weight - 700 pounds

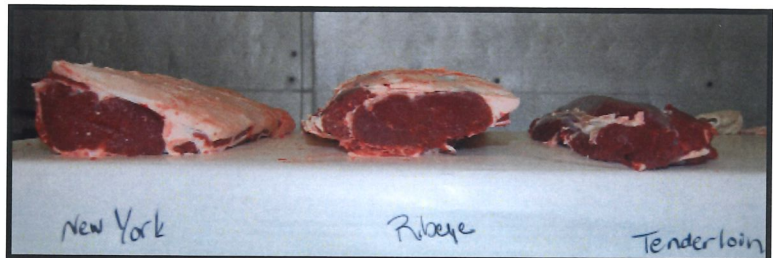
Weaned on November 30, 2007

Weaning Weight - 549 pounds

The bull was fed free choice pellets from weaning until slaughter. The bull was finished on grass hay and a processed grain pellet for 360 days.



# 2009 REALITY BASED CARCASS CLASS



LIVE BUFFALO WEIGHT	CARCASS WEIGHT	PER LB. VALUE	CARCASS VALUE
	700	\$2.41	\$1,687.00
			<b>% OF TOTAL VALUE</b>
<b>MIDDLE BUFFALO VALUE</b> (NY STRIP, TOP SIRLOIN BUTT, TENDERLOIN, RIB-EYE)		\$730.54	43.30%
<b>BUFFALO CHUCK VALUE</b> (SHOULDER CLOD, INSIDE CHUCK ROLL, BRISKET)		\$295.35	17.51%
<b>BUFFALO ROUND VALUE</b> (PEELED KNUCKLE, TOP ROUND, FLAT, EYE OF ROUND)		\$344.51	20.42%
<b>BUFFALO THIN MEATS</b> (TRI-TIP, BALL-TIP, FLANK STEAK, BBQ RIB, SKIRT)		\$53.90	3.20%
<b>BUFFALO TRIM 85%</b>		\$613.08	36.34%
		<b>TOTAL VALUE</b>	<b>% MARK-UP</b>
		\$2,037.38	120.77%

WASTE ITEMS	LBS	% CARCASS WEIGHT
FAT & KIDNEY	46.25	6.61%
BONES	120	17.14%

ANIMAL	SEX	BF INCHES	PYG	ADJ. PYG	HCW	REA	%KPH	YGM	YGA	LEAN	SKEL	MARB	MIN. L	SHEAR FORCE
	BULL	0.84	4.1	3.2	700	10.7	1.0	4.7	3.8	D70	B50	TR60	33.4	8.5



Bull

Final Live Weight At Home - 1,203 pounds

Hot Hanging Weight - 632 pounds

Weaned on - Nov. 30, 2007

Weaning Weight - 497

The bull was fed free choice pellets from weaning until slaughter. The bull was finished on grass hay and a processed grain pellet for 360 days.



# 2009 REALITY BASED CARCASS CLASS



LIVE BUFFALO WEIGHT	CARCASS WEIGHT	PER LB. VALUE	CARCASS VALUE	
	632	\$2.41	\$1,523.12	
				<b>% OF TOTAL VALUE</b>
<b>MIDDLE BUFFALO VALUE</b> (NY STRIP, TOP SIRLOIN BUTT, TENDERLOIN, RIB-EYE)		\$609.90	40.04%	
<b>BUFFALO CHUCK VALUE</b> (SHOULDER CLOD, INSIDE CHUCK ROLL, BRISKET)		\$281.12	18.46%	
<b>BUFFALO ROUND VALUE</b> (PELLED KNUCKLE, TOP ROUND, FLAT, EYE OF ROUND)		\$308.13	20.23%	
<b>BUFFALO THIN MEATS</b> (TRI-TIP, BALL-TIP, FLANK STEAK, BBQ RIB, SKIRT)		\$54.64	3.59%	
<b>BUFFALO TRIM 86%</b>		\$564.44	37.06%	
		<b>TOTAL VALUE</b>	<b>% MARK-UP</b>	
		\$1,818.23	119.38%	

WASTE ITEMS	LBS	% CARCASS WEIGHT
FAT & KIDNEY	44.6	7.06%
BONES	112	17.72%

ANIMAL	SEX	BF INCHES	PYG	ADJ. PYG	HCW	REA	%KPH	YGM	YGA	LEAN	SKEL	MARB	MIN. L	SHEAR FORCE
	BULL	0.56	3.4	2.9	632	10.8	1.5	3.6	3.1	C70	B80	TR50	34.6	7.4

T. Linscott



Heifer

Final Live Weight At Home - 936 pounds

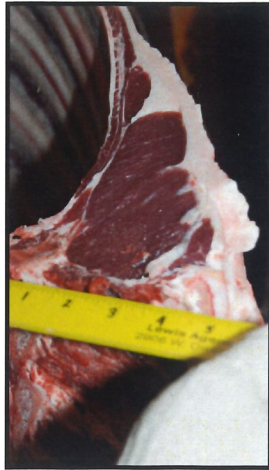
Hot Hanging Weight - 525 pounds

Weaned on November 1, 2007

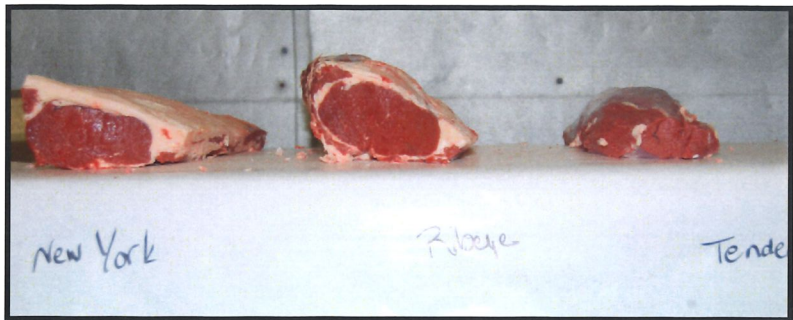
Weaning Weight - 476 pounds

The heifer was fed free choice alfalfa and grass hay for the first winter and was on irrigated grass pasture for the first summer. She was finished on a ration of corn and free choice alfalfa and grass hay for 90 days.

The bull's mother weighed 1,196 pounds on November 1, 2008.



# 2009 REALITY BASED CARCASS CLASS



LIVE BUFFALO WEIGHT	CARCASS WEIGHT	PER LB. VALUE	CARCASS VALUE	
	525	\$2.26	\$1,186.50	
				<b>% OF TOTAL VALUE</b>
<b>MIDDLE BUFFALO VALUE</b> (NY STRIP, TOP SIRLOIN BUTT, TENDERLOIN, RIB-EYE)		\$559.97	47.20%	
<b>BUFFALO CHUCK VALUE</b> (SHOULDER CLOD, INSIDE CHUCK ROLL, BRISKET)		\$230.24	19.40%	
<b>BUFFALO ROUND VALUE</b> (PELLED KNUCKLE, TOP ROUND, FLAT, EYE OF ROUND)		\$295.14	24.87%	
<b>BUFFALO THIN MEATS</b> (TRI-TIP, BALL-TIP, FLANK STEAK, BBQ RIB, SKIRT)		\$44.05	3.71%	
<b>BUFFALO TRIM 85%</b>		\$413.96	34.89%	
		<b>TOTAL VALUE</b>	<b>% MARK-UP</b>	
		\$1,543.36	130.08%	

WASTE ITEMS	LBS	% CARCASS WEIGHT
FAT & KIDNEY	42.45	8.09%
BONES	89	16.95%

ANIMAL	SEX	BF INCHES	PYG	ADJ. PYG	HCW	REA	%KPH	YGM	YGA	LEAN	SKEL	MARB	MIN. L	SHEAR FORCE
	HFR	0.76	3.9	3.4	525	8.1	2.0	4.5	4.0	A80	C30	SL70	35.9	8.0

*Blue Valley*



Heifer

Final Live Weight At Home - 917 pounds

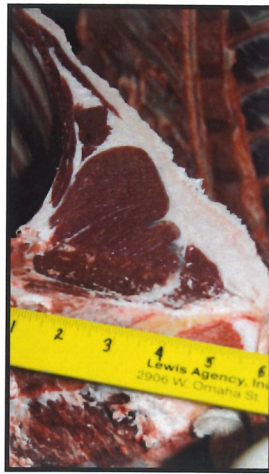
Hot Hanging Weight - 549 pounds

Weaned in November 2007

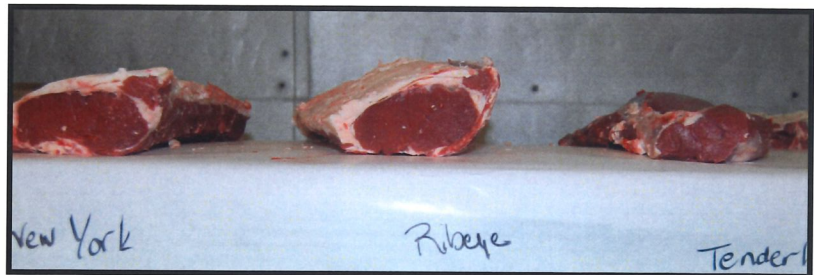
Weaning Weight - 385 pounds

The heifer was fed grass hay and limit bunk fed corn, oats, pellet and DDG the first winter. She was fed corn, oats, pellets and DDG the first summer, switching to straight pellets in the middle of summer. She was on a finish ration of grass alfalfa and limit bunk fed a corn/oats pellet mixture for approximately five months.





# 2009 REALITY BASED CARCASS CLASS



LIVE BUFFALO WEIGHT	CARCASS WEIGHT	PER LB. VALUE	CARCASS VALUE	
	549	\$2.26	\$1,240.74	
				<b>% OF TOTAL VALUE</b>
<b>MIDDLE BUFFALO VALUE</b> (NY STRIP, TOP SIRLOIN BUTT, TENDERLOIN, RIB-EYE)		\$557.60	44.94%	
<b>BUFFALO CHUCK VALUE</b> (SHOULDER CLOD, INSIDE CHUCK ROLL, BRISKET)		\$228.62	18.43%	
<b>BUFFALO ROUND VALUE</b> (PELLED KNUCKLE, TOP ROUND, FLAT, EYE OF ROUND)		\$304.44	24.54%	
<b>BUFFALO THIN MEATS</b> (TRI-TIP, BALL-TIP, FLANK STEAK, BBQ RIB, SKIRT)		\$50.26	4.05%	
<b>BUFFALO TRIM 85%</b>		\$455.88	36.74%	
		<b>TOTAL VALUE</b>	<b>% MARK-UP</b>	
		\$1,596.80	128.70%	

WASTE ITEMS	LBS	% CARCASS WEIGHT
FAT & KIDNEY	47.2	8.60%
BONES	87	15.85%

ANIMAL	SEX	BF INCHES	PYG	ADJ. PYG	HCW	REA	%KPH	YGM	YGA	LEAN	SKEL	MARB	MIN. L	SHEAR FORCE
	HFR	0.92	4.3	3.4	549	8.0	2.0	5.0	4.1	B20	D50	TR70	34.4	9.8

Beavers



Heifer

Final Live Weight At Home - 990 pounds

Hot Hanging Weight - 569 pounds

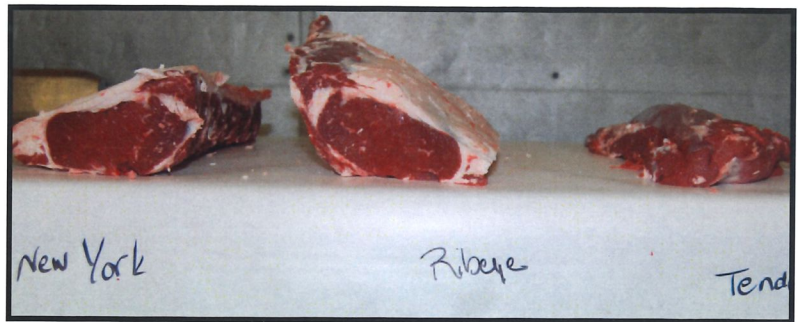
Weaned on February 1, 2008

Weaning Weight - 472 pounds

The heifer was fed a ration of oat screening pellets and dried distiller's grain (ad lib) and grass hay for the first winter and the first summer. She was finished on a ration of oat screening pellets, dried distiller's grain and some corn screenings and grass hay for 100 days. This heifer's mother weighed 1,120 pounds.



# 2009 REALITY BASED CARCASS CLASS



LIVE BUFFALO WEIGHT	CARCASS WEIGHT	PER LB. VALUE	CARCASS VALUE	
	569	\$2.26	\$1,285.94	
				<b>% OF TOTAL VALUE</b>
<b>MIDDLE BUFFALO VALUE</b> (NY STRIP, TOP SIRLOIN BUTT, TENDERLOIN, RIB-EYE)		\$590.14	45.89%	
<b>BUFFALO CHUCK VALUE</b> (SHOULDER CLOD, INSIDE CHUCK ROLL, BRISKET)		\$250.03	19.44%	
<b>BUFFALO ROUND VALUE</b> (PEELED KNUCKLE, TOP ROUND, FLAT, EYE OF ROUND)		\$289.06	22.48%	
<b>BUFFALO THIN MEATS</b> (TRI-TIP, BALL-TIP, FLANK STEAK, BBQ RIB, SKIRT)		\$50.68	3.94%	
<b>BUFFALO TRIM 84%</b>		\$466.98	36.31%	
		<b>TOTAL VALUE</b>	<b>% MARK-UP</b>	
		\$1,646.89	128.07%	

WASTE ITEMS	LBS	% CARCASS WEIGHT
FAT & KIDNEY	51.55	9.06%
BONES	84	14.76%

ANIMAL	SEX	BF INCHES	PYG	ADJ. PYG	HCW	REA	%KPH	YGM	YGA	LEAN	SKEL	MARB	MIN. L	SHEAR FORCE
	HFR	1.20	5.0	3.4	569	8.9	2.5	5.4	3.8	A90	B50	SL50	36.0	6.4

Bawron



Heifer

Final Live Weight At Home - 825 pounds

Hot Hanging Weight - 399 pounds (disqualified - did not meet minimum weight limit)

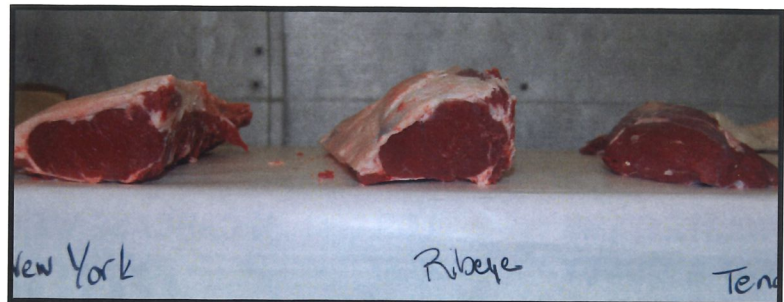
Weaned in January of 2008

Weaning Weight - 386 pounds

The heifer was fed a mixed ration and hay for the first winter and summer. She was on a ration of straw and corn, alfalfa, pellet, dried distiller's grain, minerals and vitamins for finish feed. The bull was on the finish ration for 120 days.



# 2009 REALITY BASED CARCASS CLASS



LIVE BUFFALO WEIGHT	CARCASS WEIGHT	PER LB. VALUE	CARCASS VALUE
	399 (DQ)	\$2.26	\$901.74
			<b>% OF TOTAL VALUE</b>
<b>MIDDLE BUFFALO VALUE</b> (NY STRIP, TOP SIRLOIN BUTT, TENDERLOIN, RIB-EYE)		\$433.44	48.07%
<b>BUFFALO CHUCK VALUE</b> (SHOULDER CLOD, INSIDE CHUCK ROLL, BRISKET)		\$143.17	15.88%
<b>BUFFALO ROUND VALUE</b> (PELLED KNUCKLE, TOP ROUND, FLAT, EYE OF ROUND)		\$209.69	23.25%
<b>BUFFALO THIN MEATS</b> (TRI-TIP, BALL-TIP, FLANK STEAK, BBQ RIB, SKIRT)		\$36.14	4.01%
<b>BUFFALO TRIM 84%</b>		\$17.02	35.16%
		<b>TOTAL VALUE</b>	<b>% MARK-UP</b>
		\$1,139.46	\$126.36%

WASTE ITEMS	LBS	% CARCASS WEIGHT
FAT & KIDNEY	30.5	7.64%
BONES	77	19.30%

ANIMAL	SEX	BF	PYG	ADJ.	HCW	REA	%KPH	YGM	YGA	LEAN	SKEL	MARB	MIN. L	SHEAR
	HFR	0.76	3.9	PYG	399	7.2	1.5	4.4	3.7	A80	A80	SL00	37.0	FORCE
														7.7

## AVERAGE BULL

LIVE BUFFALO WEIGHT	CARCASS WEIGHT	PER LB. VALUE	CARCASS VALUE
	663.75	\$2.41	\$1,599.64
			<b>% OF TOTAL VALUE</b>
<b>MIDDLE BUFFALO VALUE</b> <i>(NY STRIP, TOP SIRLOIN BUTT, TENDERLOIN, RIB-EYE)</i>		\$714.34	44.66%
<b>BUFFALO CHUCK VALUE</b> <i>(SHOULDER CLOD, INSIDE CHUCK ROLL, BRISKET)</i>		\$297.03	18.57%
<b>BUFFALO ROUND VALUE</b> <i>(PELLED KNUCKLE, TOP ROUND, FLAT, EYE OF ROUND)</i>		\$330.36	20.65%
<b>BUFFALO THIN MEATS</b> <i>(TRI-TIP, BALL-TIP, FLANK STEAK, BBQ RIB, SKIRT)</i>		\$56.36	3.52%
<b>BUFFALO TRIM</b> 87%		\$573.67	35.86%
		<b>TOTAL VALUE</b>	<b>% MARK-UP</b>
		\$1,971.76	123.26%

WASTE ITEMS	LBS	% CARCASS WEIGHT
FAT & KIDNEY	36.67	5.52%
BONES	113.12	17.04%

## AVERAGE HEIFER

LIVE BUFFALO WEIGHT	CARCASS WEIGHT	PER LB. VALUE	CARCASS VALUE
	510.5	\$2.26	\$1,153.73
			<b>% OF TOTAL VALUE</b>
<b>MIDDLE BUFFALO VALUE</b> <i>(NY STRIP, TOP SIRLOIN BUTT, TENDERLOIN, RIB-EYE)</i>		\$537.69	46.60%
<b>BUFFALO CHUCK VALUE</b> <i>(SHOULDER CLOD, INSIDE CHUCK ROLL, BRISKET)</i>		\$224.00	19.42%
<b>BUFFALO ROUND VALUE</b> <i>(PELLED KNUCKLE, TOP ROUND, FLAT, EYE OF ROUND)</i>		\$274.51	23.79%
<b>BUFFALO THIN MEATS</b> <i>(TRI-TIP, BALL-TIP, FLANK STEAK, BBQ RIB, SKIRT)</i>		\$43.42	3.76%
<b>BUFFALO TRIM</b> 85%		\$413.31	35.82%
		<b>TOTAL VALUE</b>	<b>% MARK-UP</b>
		\$1,492.93	129.40%

WASTE ITEMS	LBS	% CARCASS WEIGHT
FAT & KIDNEY	41.95	8.22%
BONES	83.25	16.31%