

Consignors entered in the 2008 Reality Based Carcass Class

BH - Beaver Creek Buffalo Co., Brad Beavers, Jefferson, SD
BH - Blue Valley Ranch, manager Perry Handyside, Kremmling, CO
BH - Cammack Buffalo Ranch, John & Lane Cammack, Union Center, SD
B - Colorado Bison Co. at Hay Draw Ranch, Merle & Susan Maass, Union Center, SD
BH - Mosquito Park Enterprises, Rod Sather, Vivian, SD
BH - Nolz Poor Farm Bison, Ed & Deanna Nolz, Sioux Falls, SD
B - Quarter Circle Y Co. - Monty Hepper, Mobridge, SD
BH - Slim Buttes Buffalo Ranch, Brodie Limpert, Buffalo, SD
BBH - Slim Buttes Buffalo Ranch, Sandy & Jacki Limpert, Buffalo, SD

<u>Bull Winners</u>	<u>HHW</u>
1. John & Lane Cammack	554
2. Sandy Limpert	551
3. Rod Sather	566

<u>Heifer Winners</u>	<u>HHW</u>
1. Jacki Limpert	449
2. John & Lane Cammack	492
3. Brad Beavers	472

DTBA 2002 Reality Based Carcass Class *Program Details*

The Dakota Territory Buffalo Association (DTBA) held the second Reality Based Carcass Class in conjunction with the 2002 Black Hills Buffalo Classic Show and Sale. Last year, the carcass class offered another dimension to the DTBA's already successful live animal show and sale. Through this new class, the association has been able to focus on and give attention to the driving force of the buffalo industry, quality meat production.

Buffalo ranchers produce some of the healthiest, most appetizing red meat in the world and consumers can and will continue to demand this meat product. With that in mind, the DTBA decided to again host a carcass class that will help to educate producers on the economic benefits of taking their bull calves all the way to slaughter weight. Additionally, for the first time ever in the buffalo industry, the DTBA opened up the contest to heifers. With the addition of 10 available spots for heifers, this contest will mark the first time any data has ever been recorded on slaughter heifers. A total of 20 entries were accepted, 10 each of bulls and heifers. Trophies will awarded for the first three places. There will also be a \$5,000 cash prize for the first place carcass in the bulls and another \$5,000 cash award for the highest placing female carcass.

The success of last year's contest was partly due to the unique nature of it. About a year and a half ago, Buffalo, SD producer, Sandy Limpert, approached Bruce Anderson of RC Western Meats in Rapid City, SD. What Limpert was suggesting was to do a carcass contest, but with a different twist. He wanted to have the contest winner determined based on the retail value of the meat the animal was able to put in the box. This is an idea that Limpert has been kicking around for a number of years and has been fine-tuning the details. Having been told it couldn't be done, that just spurred him on to find a way to do it. When he approached Anderson, Anderson was intrigued with the idea and also, being a large regional bison meat purveyor, wanted to know the results for his own personal experience. After much discussion and lots of fine tuning, the Dakota Territory Buffalo Association (DTBA) was the official host of the new Reality-Based Carcass Class.

The contest idea is simple. After the animals are delivered and a live weight obtained, they are then slaughtered. A hot hanging weight is recorded. After hanging in the cooler for a set amount of time, the carcasses are halved and then quartered. Under the watchful eye of an independent party, in this case, Dr. Robert Maddock of South Dakota State University, the meat is trimmed to a quarter inch of fat cover. All the fat that was trimmed off is weighed. Each cut is then weighed with a consistent, current value per pound put on them. The remaining bones, minus the trimmed off meat, are also weighed. A sample of burger from each carcass is cooked and the fat content measured. Anderson has developed a sliding scale in which to base value of the burger on its percentage of lean meat, meaning the leaner the meat, the more it was worth per pound.

Upon the completion of the contest, a sheet is made for each entry. It contains data such as the carcass weight, the carcass value, the middle value, the chuck value, the round value, the thin meats value and the trim. It also contains the waste items, including the fat and kidney and the bones. The winner is determined by the highest percentage of growth from the carcass value to the retail value.

So, what is accomplished by this reality-based contest? Limpert hopes that the data recorded and provided to the producers will help them understand their feeding program and how it affects the final product. From Anderson's point of view, it helps producers know what kind of animal will make the packer and the producer the most money. Over time, the records kept from this type of contest will help producers make genetic and production decisions that will help their yields and produce an efficient product. When the data from the first contest was released to the public, there were many calls to the association noting that this industry first had done it's job in generating the beginning of a new database for buffalo meat producers.

Producers who entered the contest this year were asked to provide as much background data as possible on their animal, including genetic history, growth progress, feeding program, traveling information, nearly anything that might be recordable. Once again, photographs of the live animals were taken and photographs were taken throughout the entire process to record each entry and help producers and consumers to better understand the value of the meat they produce and consume.



Bull

Final Live Weight At Home - 1,000 pounds

Hot Hanging Weight - 525 pounds (disqualified from class as it did not meet minimum weight)

Weaned on November 20, 2006

Weaning Weight - 520 pounds

The bull was bunk fed 3/4 hay and 1/4 grain for the first winter. He was run on grass the first summer. He was on finish feed for 98 days in a lot with bunk feeding. He was finished on a mixture of corn, wheat screenings 45% and 2/3 alfalfa and 1/3 wheat grass hay.

MH

2008 REALITY BASED CARCASS CLASS



LIVE BUFFALO WEIGHT	CARCASS WEIGHT	PER LB. VALUE	CARCASS VALUE
	525 (under min. weight)	\$2.03	\$1,065.75
			% OF TOTAL VALUE
MIDDLE BUFFALO VALUE (NY STRIP, TOP SIRLOIN BUTT, TENDERLOIN, RIB-EYE)		\$522.52	49.03%
BUFFALO CHUCK VALUE (SHOULDER CLOD, INSIDE CHUCK ROLL, BRISKET)		\$209.77	19.68%
BUFFALO ROUND VALUE (PELLED KNUCKLE, TOP ROUND, FLAT, EYE OF ROUND)		\$270.64	25.39%
BUFFALO THIN MEATS (TRI-TIP, BALL-TIP, FLANK STEAK, BBQ RIB, SKIRT)		\$44.53	4.18%
BUFFALO TRIM 88%		\$436.80	40.99%
		TOTAL VALUE	% MARK-UP
		\$1,484.26	139.27%

WASTE ITEMS	LBS	% CARCASS WEIGHT
FAT & KIDNEY	20.2	3.85%
BONES	92	17.52%

ANIMAL	SEX	BF INCHES	PYG	ADJ. PYG	HCW	REA	%KPH	YGM	YGA	LEAN	SKEL	MARB	MIN. L	SHEAR FORCE
	BULL	0.12	2.3	2.3	525	9.7	1.0	2.5	2.5	C10	A20	PD10	34.88	2.0



Bull

Final Live Weight At Home - 1,029 pounds

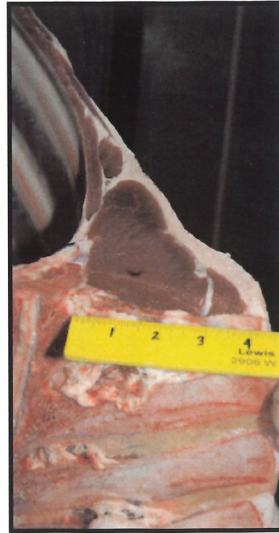
Hot Hanging Weight - 539 pounds (disqualified from class as it did not meet minimum weight)

Weaned on October 23, 2006

Weaning Weight - 421 pounds

The bull was fed grass and alfalfa for the first winter and grass, alfalfa and pasture for the first summer. The bull was finished on grass hay and grass/alfalfa hay. No grain was fed to the bull. He has been on this same feed from weaning to slaughter.

The bull's mother weighed 1,115 pounds.



2008 REALITY BASED CARCASS CLASS



LIVE BUFFALO WEIGHT	CARCASS WEIGHT	PER LB. VALUE	CARCASS VALUE
	539 (under min. weight)	\$2.03	\$1,094.17
			% OF TOTAL VALUE
MIDDLE BUFFALO VALUE (NY STRIP, TOP SIRLOIN BUTT, TENDERLOIN, RIB-EYE)		\$549.06	50.18%
BUFFALO CHUCK VALUE (SHOULDER CLOD, INSIDE CHUCK ROLL, BRISKET)		\$198.96	18.18%
BUFFALO ROUND VALUE (PELLED KNUCKLE, TOP ROUND, FLAT, EYE OF ROUND)		\$246.81	22.56%
BUFFALO THIN MEATS (TRI-TIP, BALL-TIP, FLANK STEAK, BBQ RIB, SKIRT)		\$48.46	4.43%
BUFFALO TRIM 89%		\$434.60	39.72%
		TOTAL VALUE	% MARK-UP
		\$1,477.89	135.07%

WASTE ITEMS	LBS	% CARCASS WEIGHT
FAT & KIDNEY	22.05	4.09%
BONES	109	20.22%

ANIMAL	SEX	BF INCHES	PYG	ADJ. PYG	HCW	REA	%KPH	YGM	YGA	LEAN C80	SKEL A20	MARB TR30	MIN. L	SHEAR FORCE
	BULL	0.32	2.8	2.7	539	10.9	1.0	2.7	2.6				33.22	4.7



Heifer

Final Live Weight At Home - 871 pounds

Hot Hanging Weight -449 pounds

Weaned on December 30, 2006

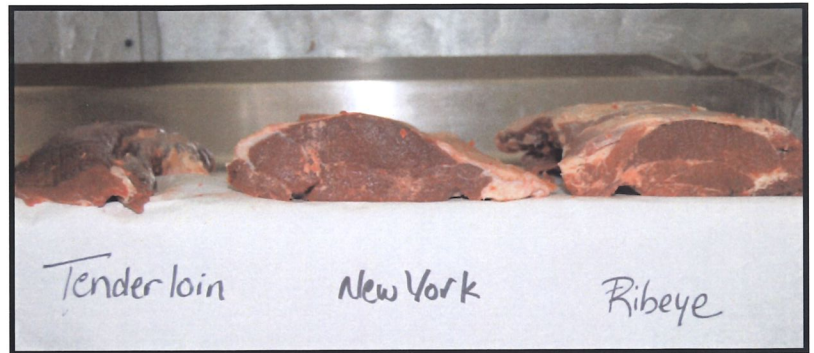
Weaning Weight - 460 pounds

The heifer was put out on grass from May 1, 2007 to December 1, 2007. She was then put on full feed until slaughter. She was fed barley and grass hay and a wheat screening pellet. She was on this mixture for 42 days.

*Jacki
Linsport*



2008 REALITY BASED CARCASS CLASS



LIVE BUFFALO WEIGHT	CARCASS WEIGHT	PER LB. VALUE	CARCASS VALUE
	449	\$1.94	\$871.06
			% OF TOTAL VALUE
MIDDLE BUFFALO VALUE (NY STRIP, TOP SIRLOIN BUTT, TENDERLOIN, RIB-EYE)		\$464.70	53.35%
BUFFALO CHUCK VALUE (SHOULDER CLOD, INSIDE CHUCK ROLL, BRISKET)		\$165.05	18.95%
BUFFALO ROUND VALUE (PELLED KNUCKLE, TOP ROUND, FLAT, EYE OF ROUND)		\$237.62	27.28%
BUFFALO THIN MEATS (TRI-TIP, BALL-TIP, FLANK STEAK, BBQ RIB, SKIRT)		\$36.56	4.20%
BUFFALO TRIM 89%		\$375.30	43.09%
		TOTAL VALUE	% MARK-UP
		\$1,279.23	146.86%

WASTE ITEMS	LBS	% CARCASS WEIGHT
FAT & KIDNEY	16.45	3.66%
BONES	87	19.38%

ANIMAL	SEX	BF INCHES	PYG	ADJ. PYG	HCW	REA	%KPH	YGM	YGA	LEAN D10	SKEL C90	MARB TR10	MIN. L	SHEAR FORCE
	HEIFER	0.28	2.7	2.6	449	8.1	0.5	3.3	3.2				34.23	4.5



Heifer

Final Live Weight At Home - 874 pounds

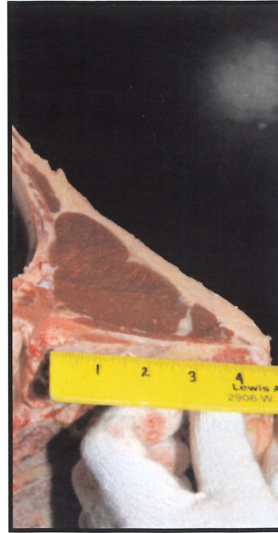
Hot Hanging Weight - 492 pounds

Weaned on December 8, 2006

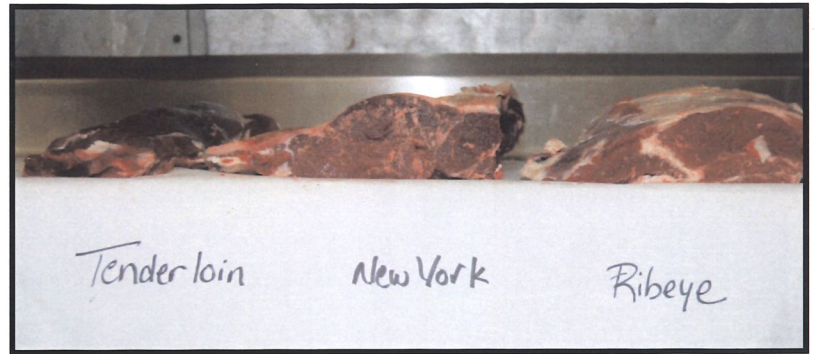
Weaning Weight - 542 pounds

The heifer was fed crested wheat grass hay and a corn/canola mix for the first winter. She was put on pasture April of 2007 and then started on five pounds of corn and canola mix the first part of October. She was put in the feedlot on December 8 and fed crested wheat grass hay and eleven pounds of grain.

John Cammack



2008 REALITY BASED CARCASS CLASS



LIVE BUFFALO WEIGHT	CARCASS WEIGHT	PER LB. VALUE	CARCASS VALUE
	492	\$1.94	\$954.48
			% OF TOTAL VALUE
MIDDLE BUFFALO VALUE (NY STRIP, TOP SIRLOIN BUTT, TENDERLOIN, RIB-EYE)		\$522.41	54.73%
BUFFALO CHUCK VALUE (SHOULDER CLOD, INSIDE CHUCK ROLL, BRISKET)		\$184.39	19.32%
BUFFALO ROUND VALUE (PELLED KNUCKLE, TOP ROUND, FLAT, EYE OF ROUND)		\$255.66	26.79%
BUFFALO THIN MEATS (TRI-TIP, BALL-TIP, FLANK STEAK, BBQ RIB, SKIRT)		\$43.66	4.57%
BUFFALO TRIM 88%		\$365.70	38.31%
		TOTAL VALUE	% MARK-UP
		\$1,371.82	143.72%

WASTE ITEMS	LBS	% CARCASS WEIGHT
FAT & KIDNEY	23.2	4.72%
BONES	95	19.31%

ANIMAL	SEX	BF INCHES	PYG	ADJ. PYG	HCW	REA	%KPH	YGM	YGA	LEAN	SKEL	MARB	MIN. L	SHEAR FORCE
	HEIFER	0.36	2.9	2.8	492	10.1	1.4	2.8	2.7	C20	B20	PD90	33.78	4.0



Heifer

Final Live Weight At Home - 903 pounds

Hot Hanging Weight - 472 pounds

Weaned in October of 2006

Weaning Weight - N/A

The heifer was limit fed a complete feed pellet and choice grass and alfalfa hay for the first winter and the following summer. The heifer was finished on a limit fed ration of corn, distiller's grain and oat pellets with choice grass and alfalfa hay.

*Brad
Beavers*

2008 REALITY BASED CARCASS CLASS



LIVE BUFFALO WEIGHT	CARCASS WEIGHT	PER LB. VALUE	CARCASS VALUE
	472	\$1.94	\$915.68
			% OF TOTAL VALUE
MIDDLE BUFFALO VALUE (NY STRIP, TOP SIRLOIN BUTT, TENDERLOIN, RIB-EYE)		\$462.34	50.49%
BUFFALO CHUCK VALUE (SHOULDER CLOD, INSIDE CHUCK ROLL, BRISKET)		\$173.07	18.90%
BUFFALO ROUND VALUE (PELLED KNUCKLE, TOP ROUND, FLAT, EYE OF ROUND)		\$228.98	25.01%
BUFFALO THIN MEATS (TRI-TIP, BALL-TIP, FLANK STEAK, BBQ RIB, SKIRT)		\$42.38	4.63%
BUFFALO TRIM 86%		\$347.90	37.99%
		TOTAL VALUE	% MARK-UP
		\$1,254.67	137.02%

WASTE ITEMS	LBS	% CARCASS WEIGHT
FAT & KIDNEY	38.6	8.18%
BONES	82	17.37%

ANIMAL	SEX	BF INCHES	PYG	ADJ. PYG	HCW	REA	%KPH	YGM	YGA	LEAN D30	SKEL C70	MARB SL20	MIN. L	SHEAR FORCE
	HEIFER	1.04	4.6	4.2	472	7.7	2.0	5.1	4.7				32.14	2.7



Heifer

Final Live Weight At Home - 906 pounds

Hot Hanging Weight - 475 pounds

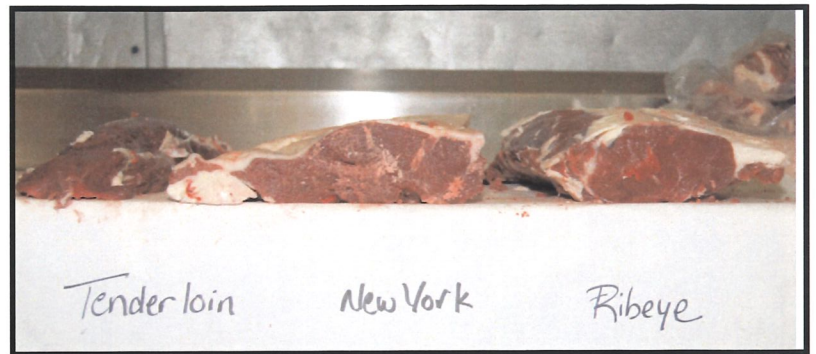
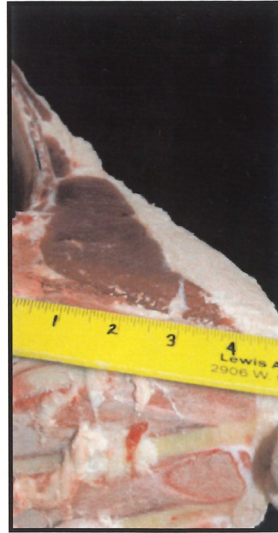
Weaned on February 1, 2007

Weaning Weight - 574 pounds

The heifer was fed hay corn stalks and two pounds of grain the first winter. She was fed grass and two pounds of grain the first summer. The heifer was finished on grass hay, corn stalks and four to five pounds of grain, which consisted of corn, oats and soybeans. She was fed four to five pounds of the grain per day and was on finish feed for 100 to 120 days.

EN

2008 REALITY BASED CARCASS CLASS



LIVE BUFFALO WEIGHT	CARCASS WEIGHT	PER LB. VALUE	CARCASS VALUE
	475	\$1.94	\$921.50
			% OF TOTAL VALUE
MIDDLE BUFFALO VALUE (NY STRIP, TOP SIRLOIN BUTT, TENDERLOIN, RIB-EYE)		\$461.37	50.07%
BUFFALO CHUCK VALUE (SHOULDER CLOD, INSIDE CHUCK ROLL, BRISKET)		\$190.58	20.68%
BUFFALO ROUND VALUE (PELLED KNUCKLE, TOP ROUND, FLAT, EYE OF ROUND)		\$234.00	25.39%
BUFFALO THIN MEATS (TRI-TIP, BALL-TIP, FLANK STEAK, BBQ RIB, SKIRT)		\$38.33	4.16%
BUFFALO TRIM 85%		\$331.20	35.94%
		TOTAL VALUE	% MARK-UP
		\$1,255.48	136.24%

WASTE ITEMS	LBS	% CARCASS WEIGHT
FAT & KIDNEY	33.8	7.12%
BONES	82	17.26%

ANIMAL	SEX	BF INCHES	PYG	ADJ. PYG	HCW	REA	%KPH	YGM	YGA	LEAN	SKEL	MARB	MIN. L	SHEAR FORCE
	HEIFER	0.64	3.6	3.4	475	8.1	2.0	4.0	3.8	C10	B90	SL10	34.35	2.7



Heifer

Final Live Weight At Home - 962 pounds

Hot Hanging Weight - 526 pounds

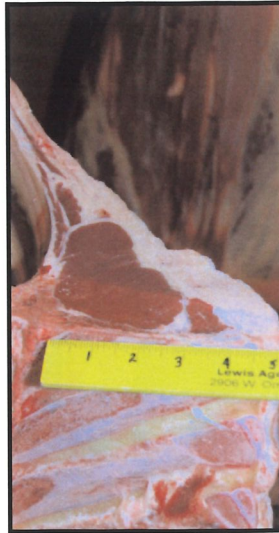
Weaned on November 7, 2006

Weaning Weight - 504 pounds

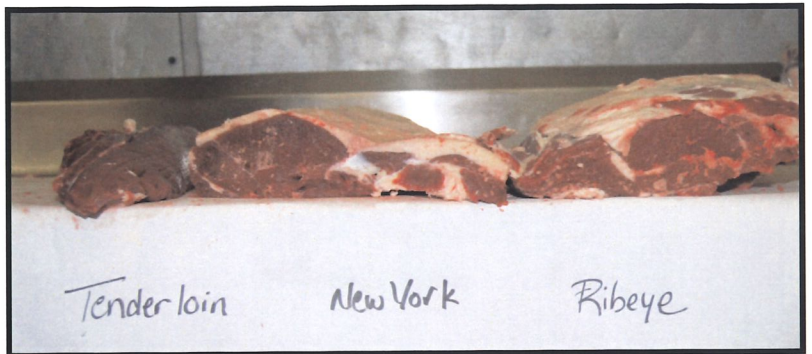
The heifer was fed free choice alfalfa and grass hay for the first winter. She was on irrigated grass pasture for the first summer. To finish the heifer, she was confined to a dry lot and fed ground corn and alfalfa for 100 days.

The heifer's mother weighed 1,184 pounds.

BIR



2008 REALITY BASED CARCASS CLASS



LIVE BUFFALO WEIGHT	CARCASS WEIGHT	PER LB. VALUE	CARCASS VALUE
	526	\$1.94	\$1,020.44
% OF TOTAL VALUE			
MIDDLE BUFFALO VALUE (NY STRIP, TOP SIRLOIN BUTT, TENDERLOIN, RIB-EYE)		\$538.81	52.80%
BUFFALO CHUCK VALUE (SHOULDER CLOD, INSIDE CHUCK ROLL, BRISKET)		\$190.17	18.64%
BUFFALO ROUND VALUE (PELLED KNUCKLE, TOP ROUND, FLAT, EYE OF ROUND)		\$250.50	24.55%
BUFFALO THIN MEATS (TRI-TIP, BALL-TIP, FLANK STEAK, BBQ RIB, SKIRT)		\$44.60	4.37%
BUFFALO TRIM 85%		\$361.10	35.39%
		TOTAL VALUE	% MARK-UP
		\$1,385.18	135.74%

WASTE ITEMS	LBS	% CARCASS WEIGHT
FAT & KIDNEY	35.25	6.70%
BONES	89	16.92%

ANIMAL	SEX	BF INCHES	PYG	ADJ. PYG	HCW	REA	%KPH	YGM	YGA	LEAN	SKEL	MARB	MIN. L	SHEAR FORCE
	HEIFER	0.28	2.7	2.7	526	9.1	2.0	2.9	2.9	C90	C70	TR10	34.74	2.2



Heifer

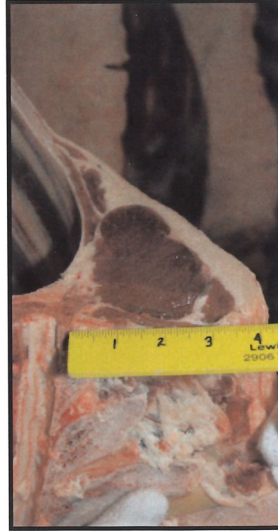
Final Live Weight At Home - 926 pounds

Hot Hanging Weight - 504 pounds

Weaned on December 30, 2006

Weaning Weight - 440 pounds

The heifer was put out on grass from May 1, 2007 to December 1, 2007. She was then put on full feed until slaughter. She was fed barley and grass hay and a wheat screening pellet. She was on this mixture for 42 days.



2008 REALITY BASED CARCASS CLASS



LIVE BUFFALO WEIGHT	CARCASS WEIGHT	PER LB. VALUE	CARCASS VALUE
	504	\$1.94	\$977.76
			% OF TOTAL VALUE
MIDDLE BUFFALO VALUE <i>(NY STRIP, TOP SIRLOIN BUTT, TENDERLOIN, RIB-EYE)</i>		\$525.21	53.72%
BUFFALO CHUCK VALUE <i>(SHOULDER CLOD, INSIDE CHUCK ROLL, BRISKET)</i>		\$190.50	19.48%
BUFFALO ROUND VALUE <i>(PELLED KNUCKLE, TOP ROUND, FLAT, EYE OF ROUND)</i>		\$240.88	24.64%
BUFFALO THIN MEATS <i>(TRI-TIP, BALL-TIP, FLANK STEAK, BBQ RIB, SKIRT)</i>		\$42.97	4.39%
BUFFALO TRIM 84%		\$321.20	32.85%
		TOTAL VALUE	% MARK-UP
		\$1,320.76	\$135.08%

WASTE ITEMS	LBS	% CARCASS WEIGHT
FAT & KIDNEY	29.65	5.88%
BONES	92	18.25%

ANIMAL	SEX	BF INCHES	PYG	ADJ. PYG	HCW	REA	%KPH	YGM	YGA	LEAN	SKEL	MARB	MIN. L	SHEAR FORCE
	HEIFER	0.48	3.2	3.0	504	9.1	1.0	3.5	3.3	C90	A80	TR0	34.43	4.4



Heifer

Final Live Weight At Home - 895 pounds

Hot Hanging Weight - 503 pounds

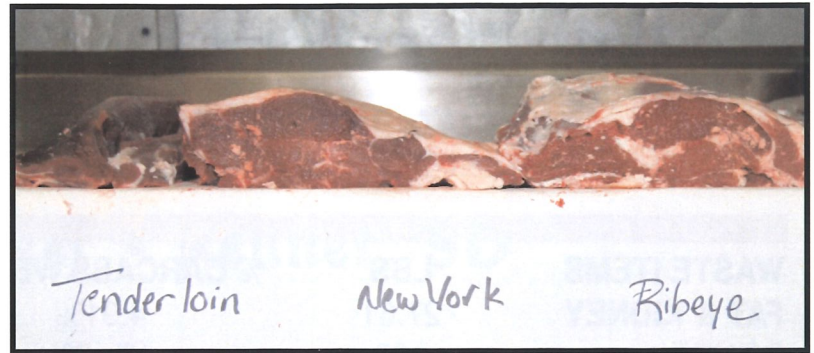
Weaned on November 29, 2006

Weaning Weight - 385 pounds

The heifer was fed free choice hay and corn, oats and soybeans for the first winter. She was fed free choice straw and corn, oats and soybeans for the first summer. She was on the same ration for 180 days to finish.



2008 REALITY BASED CARCASS CLASS



LIVE BUFFALO WEIGHT	CARCASS WEIGHT	PER LB. VALUE	CARCASS VALUE
	503	\$1.94	\$975.82
% OF TOTAL VALUE			
MIDDLE BUFFALO VALUE (NY STRIP, TOP SIRLOIN BUTT, TENDERLOIN, RIB-EYE)		\$461.37	47.28%
BUFFALO CHUCK VALUE (SHOULDER CLOD, INSIDE CHUCK ROLL, BRISKET)		\$190.58	19.53%
BUFFALO ROUND VALUE (PELLED KNUCKLE, TOP ROUND, FLAT, EYE OF ROUND)		\$234.00	23.98%
BUFFALO THIN MEATS (TRI-TIP, BALL-TIP, FLANK STEAK, BBQ RIB, SKIRT)		\$38.33	3.93%
BUFFALO TRIM 85%		\$331.20	33.94%
		TOTAL VALUE	% MARK-UP\$
		\$1,255.48	\$128.66%

WASTE ITEMS	LBS	% CARCASS WEIGHT
FAT & KIDNEY	51.45	10.23%
BONES	78	15.51%

ANIMAL	SEX	BF INCHES	PYG	ADJ. PYG	HCW	REA	%KPH	YGM	YGA	LEAN	SKEL	MARB	MIN. L	SHEAR FORCE
	HEIFER	0.80	4.0	3.9	503	9.4	3.0	3.8	3.7	C30	B30	S00	34.00	3.7

AVERAGE BULL

LIVE BUFFALO WEIGHT	CARCASS WEIGHT	PER LB. VALUE	CARCASS VALUE
	562	\$2.03	\$1,140.86
			% OF TOTAL VALUE
MIDDLE BUFFALO VALUE <i>(NY STRIP, TOP SIRLOIN BUTT, TENDERLOIN, RIB-EYE)</i>		\$553.69	48.53%
BUFFALO CHUCK VALUE <i>(SHOULDER CLOD, INSIDE CHUCK ROLL, BRISKET)</i>		\$219.49	19.24%
BUFFALO ROUND VALUE <i>(PELLED KNUCKLE, TOP ROUND, FLAT, EYE OF ROUND)</i>		\$269.70	23.64%
BUFFALO THIN MEATS <i>(TRI-TIP, BALL-TIP, FLANK STEAK, BBQ RIB, SKIRT)</i>		\$47.16	4.13%
BUFFALO TRIM 88%		\$450.06	39.45%
		TOTAL VALUE	% MARK-UP
		\$1,540.10	134.99%

WASTE ITEMS	LBS	% CARCASS WEIGHT
FAT & KIDNEY	27.61	4.91%
BONES	102	18.15%

AVERAGE HEIFER

LIVE BUFFALO WEIGHT	CARCASS WEIGHT	PER LB. VALUE	CARCASS VALUE
	488.7	\$1.94	\$948.08
			% OF TOTAL VALUE
MIDDLE BUFFALO VALUE <i>(NY STRIP, TOP SIRLOIN BUTT, TENDERLOIN, RIB-EYE)</i>		\$497.16	52.44%
BUFFALO CHUCK VALUE <i>(SHOULDER CLOD, INSIDE CHUCK ROLL, BRISKET)</i>		\$179.83	18.97%
BUFFALO ROUND VALUE <i>(PELLED KNUCKLE, TOP ROUND, FLAT, EYE OF ROUND)</i>		\$241.71	25.49%
BUFFALO THIN MEATS <i>(TRI-TIP, BALL-TIP, FLANK STEAK, BBQ RIB, SKIRT)</i>		\$41.14	4.34%
BUFFALO TRIM 86%		\$349.01	36.81%
		TOTAL VALUE	% MARK-UP\$
		\$1,308.85	\$138.05%

WASTE ITEMS	LBS	% CARCASS WEIGHT
FAT & KIDNEY	32.62	6.67%
BONES	86.42	17.68%

2008 Reality Based Carcass Class Sponsors

Nolz Poor Farm Bison • Sioux Falls, SD

Ed and Deanna Nolz

Western Buffalo Company • Rapid City, SD

Bruce Anderson

Scranton Equity Feeds • Scranton, ND

Kelly Schumacher, Sales Representative

Renner Locker • Renner, SD

Diesel Machinery, Inc. • Rapid City, SD

Thank you to our 2008 judges:

Melissa Smith - South Dakota State University, Brookings, SD

Sarah Wells - South Dakota State University, Brookings, SD

Many thanks to Dr. Duane Wulf at SDSU
for his assistance in producing the
Reality Based Carcass Class.

