

2007 REALITY BASED CARCASS CLASS



Consignors entered in the 2007 Reality Based Carcass Class

BH - Blue Valley Ranch, manager Perry Handyside, Kremmling, CO
BH - Beaver Creek Buffalo Co., Brad Beavers, Jefferson, SD
BH - Mosquito Park Enterprises, Rod Sather, Vivian, SD
B - Colorado Bison Co. at Hay Draw Ranch, Merle & Susan Maass, Union Center, SD
B - Quarter Circle Y Co. - Monty Hepper, Mobridge, SD
B - Slim Buttes Buffalo Ranch, Sandy & Jacki Limpert, Buffalo, SD
B - Slim Buttes Buffalo Ranch, Brodie Limpert, Buffalo, SD
B - Sheyenne River Bison, Dave & Diana Lutt, Harvey, ND
B - Jumpoff Buffalo Ranch, Scott & Susan Peterson, Belle Fourche, SD
B - Skull Creek Bison Ranch, Wayne & LeAnn Buchholz, Rhame, ND

| <u>Bull Winners</u> | <u>HHW</u> |
|---------------------|------------|
| 1. Brodie Limpert | 722 |
| 2. Scott Peterson | 635 |
| 3. Rod Sather | 583 |

| <u>Heifer Winners</u> | <u>HHW</u> |
|-----------------------|------------|
| 1. Brad Beavers | 436 |
| 2. Blue Valley Ranch | 458 |
| 3. Rod Sather | 492 |

DTBA 2002 Reality Based Carcass Class *Program Details*

The Dakota Territory Buffalo Association (DTBA) held the second Reality Based Carcass Class in conjunction with the 2002 Black Hills Buffalo Classic Show and Sale. Last year, the carcass class offered another dimension to the DTBA's already successful live animal show and sale. Through this new class, the association has been able to focus on and give attention to the driving force of the buffalo industry, quality meat production.

Buffalo ranchers produce some of the healthiest, most appetizing red meat in the world and consumers can and will continue to demand this meat product. With that in mind, the DTBA decided to again host a carcass class that will help to educate producers on the economic benefits of taking their bull calves all the way to slaughter weight. Additionally, for the first time ever in the buffalo industry, the DTBA opened up the contest to heifers. With the addition of 10 available spots for heifers, this contest will mark the first time any data has ever been recorded on slaughter heifers. A total of 20 entries were accepted, 10 each of bulls and heifers. Trophies will awarded for the first three places. There will also be a \$5,000 cash prize for the first place carcass in the bulls and another \$5,000 cash award for the highest placing female carcass.

The success of last year's contest was partly due to the unique nature of it. About a year and a half ago, Buffalo, SD producer, Sandy Limpert, approached Bruce Anderson of RC Western Meats in Rapid City, SD. What Limpert was suggesting was to do a carcass contest, but with a different twist. He wanted to have the contest winner determined based on the retail value of the meat the animal was able to put in the box. This is an idea that Limpert has been kicking around for a number of years and has been fine-tuning the details. Having been told it couldn't be done, that just spurred him on to find a way to do it. When he approached Anderson, Anderson was intrigued with the idea and also, being a large regional bison meat purveyor, wanted to know the results for his own personal experience. After much discussion and lots of fine tuning, the Dakota Territory Buffalo Association (DTBA) was the official host of the new Reality-Based Carcass Class.

The contest idea is simple. After the animals are delivered and a live weight obtained, they are then slaughtered. A hot hanging weight is recorded. After hanging in the cooler for a set amount of time, the carcasses are halved and then quartered. Under the watchful eye of an independent party, in this case, Dr. Robert Maddock of South Dakota State University, the meat is trimmed to a quarter inch of fat cover. All the fat that was trimmed off is weighed. Each cut is then weighed with a consistent, current value per pound put on them. The remaining bones, minus the trimmed off meat, are also weighed. A sample of burger from each carcass is cooked and the fat content measured. Anderson has developed a sliding scale in which to base value of the burger on its percentage of lean meat, meaning the leaner the meat, the more it was worth per pound.

Upon the completion of the contest, a sheet is made for each entry. It contains data such as the carcass weight, the carcass value, the middle value, the chuck value, the round value, the thin meats value and the trim. It also contains the waste items, including the fat and kidney and the bones. The winner is determined by the highest percentage of growth from the carcass value to the retail value.

So, what is accomplished by this reality-based contest? Limpert hopes that the data recorded and provided to the producers will help them understand their feeding program and how it affects the final product. From Anderson's point of view, it helps producers know what kind of animal will make the packer and the producer the most money. Over time, the records kept from this type of contest will help producers make genetic and production decisions that will help their yields and produce an efficient product. When the data from the first contest was released to the public, there were many calls to the association noting that this industry first had done it's job in generating the beginning of a new database for buffalo meat producers.

Producers who entered the contest this year were asked to provide as much background data as possible on their animal, including genetic history, growth progress, feeding program, traveling information, nearly anything that might be recordable. Once again, photographs of the live animals were taken and photographs were taken throughout the entire process to record each entry and help producers and consumers to better understand the value of the meat they produce and consume.



Bull

Final Live Weight At Home - 1,285 pounds

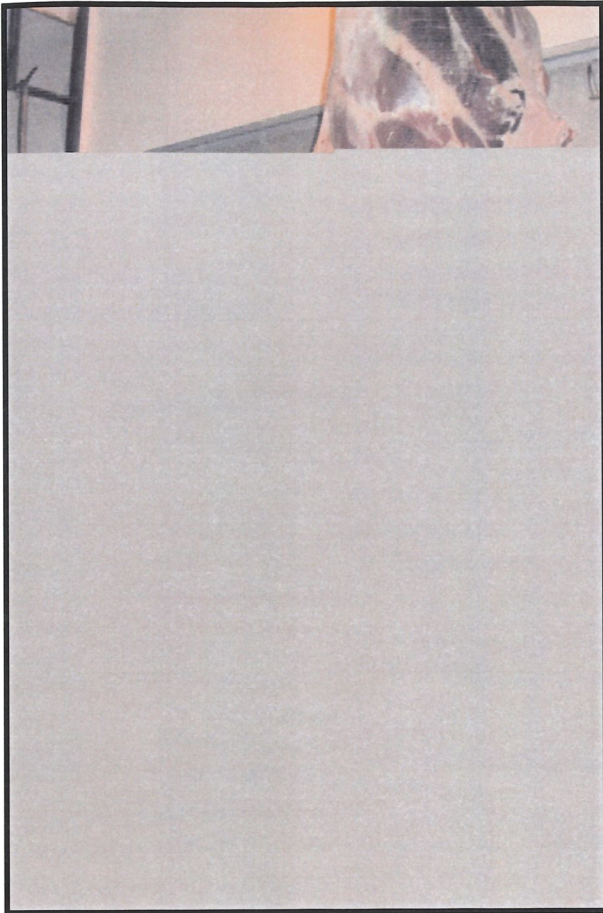
Hot Hanging Weight - 722 pounds

Weaned on December 30, 2005

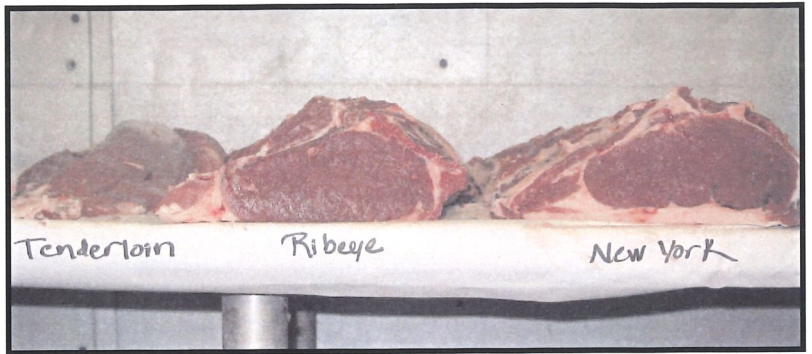
Weaning Weight - 562 pounds

The bull was weaned in December and backgrounded on grass hay and pellets for 120 days. He was then fed straight grass for 120 days. The bull was placed back on pellets and grass hay for 130 days.

Brodie Limpert



2007 REALITY BASED CARCASS CLASS



| LIVE BUFFALO WEIGHT | CARCASS WEIGHT | PER LB. VALUE | CARCASS VALUE |
|--|----------------|--------------------|------------------|
| | 722 | \$1.65 | \$1,191.30 |
| | | | % OF TOTAL VALUE |
| MIDDLE BUFFALO VALUE (NY STRIP, TOP SIRLOIN BUTT, TENDERLOIN, RIB-EYE) | | \$731.10 | 61.37% |
| BUFFALO CHUCK VALUE (SHOULDER CLOD, INSIDE CHUCK ROLL, BRISKET) | | \$275.39 | 23.12% |
| BUFFALO ROUND VALUE (PELLED KNUCKLE, TOP ROUND, FLAT, EYE OF ROUND) | | \$285.41 | 23.69% |
| BUFFALO THIN MEATS (TRI-TIP, BALL-TIP, FLANK STEAK, BBQ RIB, SKIRT) | | \$50.48 | 4.24% |
| BUFFALO TRIM 89% | | \$569.52 | 47.81% |
| | | TOTAL VALUE | % MARK-UP |
| | | \$1,911.90 | 160.49% |

| WASTE ITEMS | LBS | % CARCASS WEIGHT |
|--------------|------|------------------|
| FAT & KIDNEY | 63.1 | 8.74% |
| BONES | 120 | 16.62% |

| ANIMAL | SEX | PYG | ADJ. PYG | HCW | REA | KPH | YGM | FINAL YG | MAT LEAN | SKEL | MARB | LEAN L | FAT B | KPH | SHEAR FORCE |
|--------|------|-----|----------|-----|------|-----|-----|----------|----------|------|-----------|--------|-------|------|-------------|
| | BULL | 3.2 | 3.1 | 722 | 11.9 | 1.5 | | 2.9 | C | B | Traces 20 | 37.67 | - | 1.5% | 8.4 |



Bull

Final Live Weight At Home, 1,148 pounds

Hot Hanging Weight - 635 pounds

Weaned on December 8, 2005

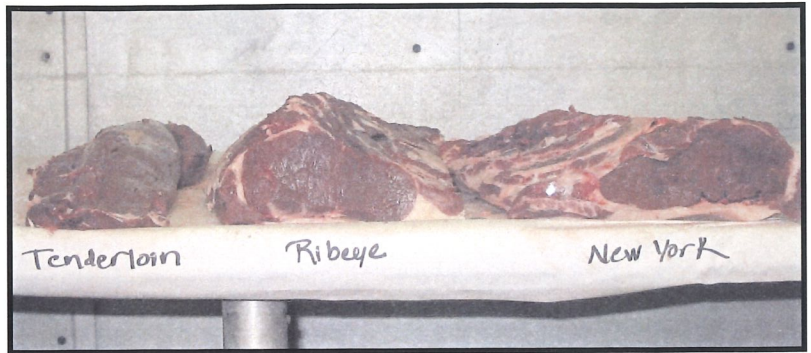
Weaning Weight - 493 pounds

The bull was weaned in December and backgrounded on grass hay and pellets for 120 days. He was then fed straight grass for 120 days. The bull was placed back on pellets and grass hay for 130 days.

Scott Peterson



2007 REALITY BASED CARCASS CLASS



| LIVE BUFFALO WEIGHT | CARCASS WEIGHT | PER LB. VALUE | CARCASS VALUE |
|--|----------------|--------------------|-------------------------|
| | 635 | \$1.65 | \$1,047.75 |
| | | | % OF TOTAL VALUE |
| MIDDLE BUFFALO VALUE (NY STRIP, TOP SIRLOIN BUTT, TENDERLOIN, RIB-EYE) | | \$633.24 | 60.44% |
| BUFFALO CHUCK VALUE (SHOULDER CLOD, INSIDE CHUCK ROLL, BRISKET) | | \$239.77 | 22.88% |
| BUFFALO ROUND VALUE (PELLED KNUCKLE, TOP ROUND, FLAT, EYE OF ROUND) | | \$272.10 | 25.97% |
| BUFFALO THIN MEATS (TRI-TIP, BALL-TIP, FLANK STEAK, BBQ RIB, SKIRT) | | \$45.88 | 4.38% |
| BUFFALO TRIM 89% | | \$487.05 | 46.49% |
| | | TOTAL VALUE | % MARK-UP |
| | | \$1,678.04 | 160.16% |

| WASTE ITEMS | LBS | % CARCASS WEIGHT |
|--------------|------|------------------|
| FAT & KIDNEY | 48.1 | 7.57% |
| BONES | 110 | 19.01% |

| ANIMAL | SEX | PYG | ADJ. PYG | HCW | REA | KPH | YGM | FINAL YG | MAT LEAN | SKEL | MARB | LEAN L | FAT B | KPH | SHEAR FORCE |
|--------|------|-----|----------|-----|------|-----|-----|----------|----------|------|-----------|--------|-------|------|-------------|
| | BULL | 2.9 | 3.0 | 635 | 10.5 | 1.5 | | 2.9 | D | B | Devoid 70 | 35.27 | - | 1.5% | 13.2 |



Bull

Final Live Weight At Home - 1,098 pounds

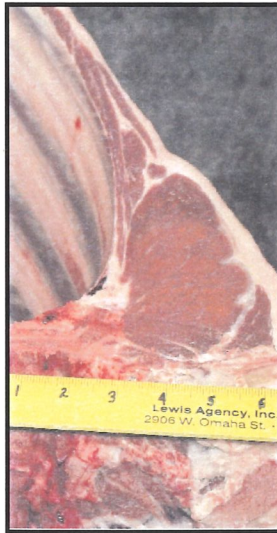
Hot Hanging Weight - 583 pounds

Weaned in October of 2005

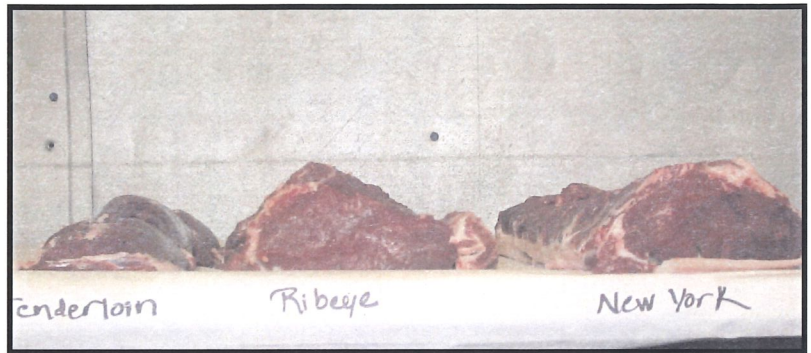
Weaning Weight - 340 pounds

The bull was fed corn, oats and protein with free choice hay the first winter and through the first summer. He was finished in the same fashion, using corn, oats, minerals and vitamins, extruded beans for protein and wheat straw replaced hay in finishing ration. The bull was on finish feed for 185 days.

Rod Sathes



2007 REALITY BASED CARCASS CLASS



| LIVE BUFFALO WEIGHT | CARCASS WEIGHT | PER LB. VALUE | CARCASS VALUE |
|--|----------------|--------------------|-------------------------|
| | 583 | \$1.65 | \$961.95 |
| | | | % OF TOTAL VALUE |
| MIDDLE BUFFALO VALUE (NY STRIP, TOP SIRLOIN BUTT, TENDERLOIN, RIB-EYE) | | \$588.19 | 61.15% |
| BUFFALO CHUCK VALUE (SHOULDER CLOD, INSIDE CHUCK ROLL, BRISKET) | | \$200.62 | 20.86% |
| BUFFALO ROUND VALUE (PELLED KNUCKLE, TOP ROUND, FLAT, EYE OF ROUND) | | \$247.67 | 25.75% |
| BUFFALO THIN MEATS (TRI-TIP, BALL-TIP, FLANK STEAK, BBQ RIB, SKIRT) | | \$43.11 | 4.48% |
| BUFFALO TRIM 89% | | \$453.90 | 47.19% |
| | | TOTAL VALUE | % MARK-UP |
| | | \$1,533.49 | 159.41% |

| WASTE ITEMS | LBS | % CARCASS WEIGHT |
|--------------|------|------------------|
| FAT & KIDNEY | 36.4 | 6.24% |
| BONES | 111 | 19.04% |

| ANIMAL | SEX | PYG | ADJ. PYG | HCW | REA | KPH | YGM | FINAL YG | MAT LEAN | SKEL | MARB | LEAN L | FAT B | KPH | SHEAR FORCE |
|--------|------|-----|----------|-----|------|-----|-----|----------|----------|------|-----------|--------|-------|------|-------------|
| | BULL | 2.6 | 2.6 | 583 | 10.2 | 1.0 | | 1.7 | D | A | Traces 10 | 36.57 | - | 1.0% | 8.9 |



Bull

Final Live Weight At Home, 01/08/07 - 1,055 pounds

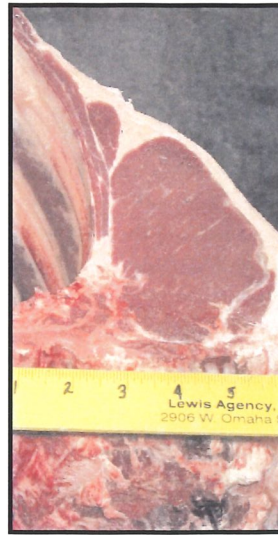
Hot Hanging Weight - 581 pounds

Weaned on January 7, 2006

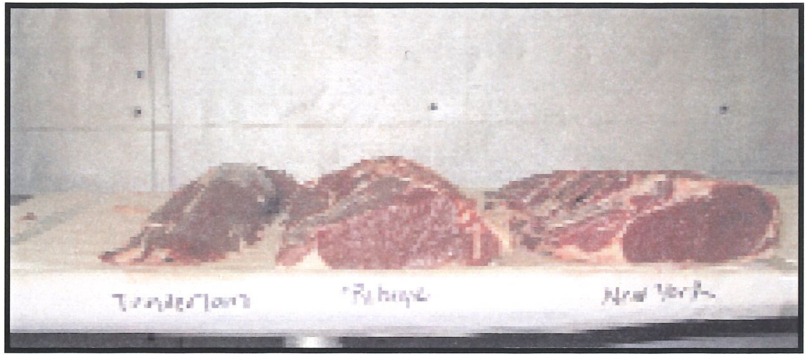
Weaning Weight - 457 pounds

The calf had been fed in the lot, 2/3 alfalfa grass hay, 1/3 corn and distiller's grain until 10/01/06. From 10/02/06 until 01/07/07, the bull was fed 60 percent corn and distiller's grain, 40 percent alfalfa grass hay.

*Mandy
Hepper*



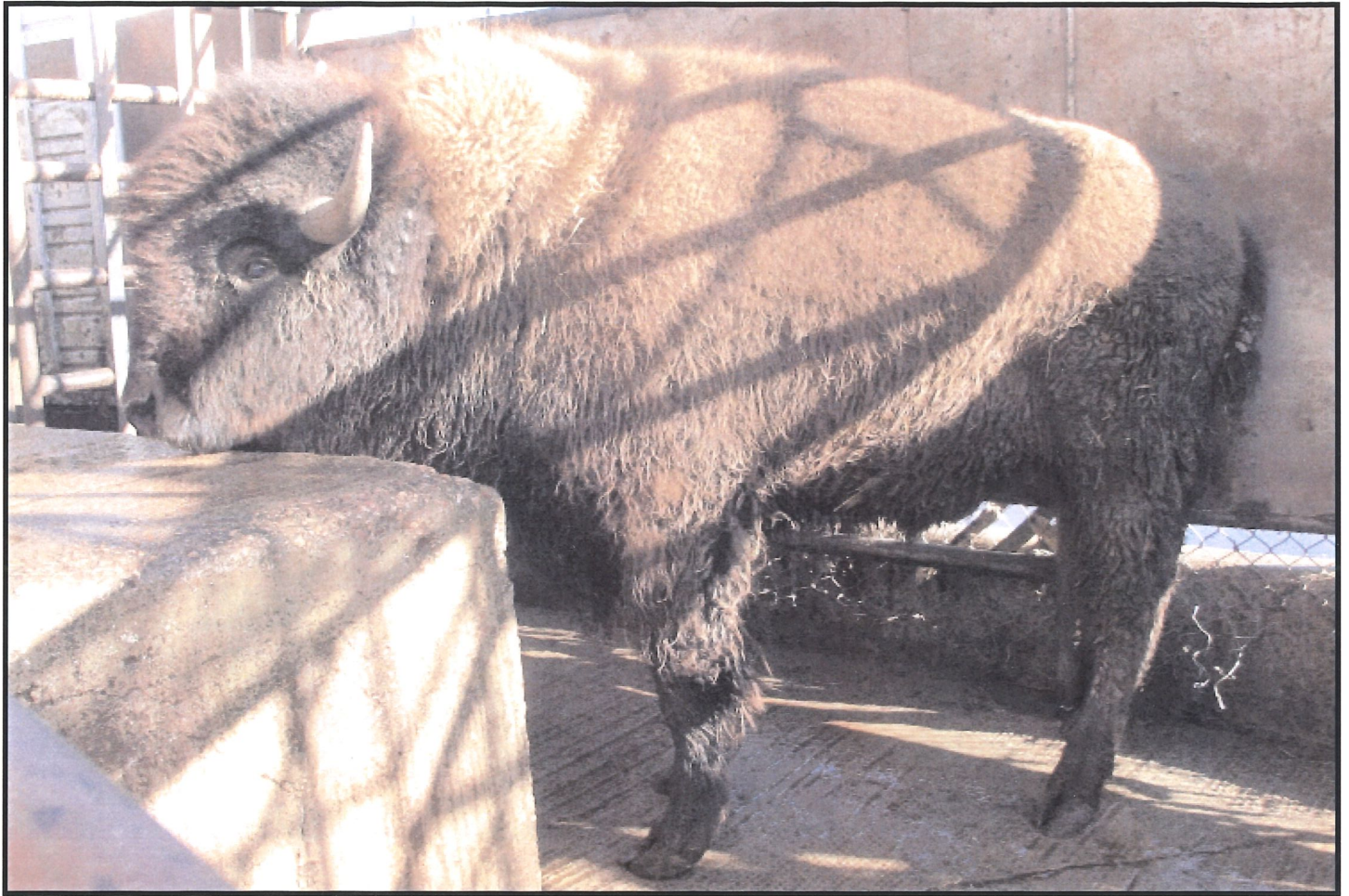
2007 REALITY BASED CARCASS CLASS



| LIVE BUFFALO WEIGHT | CARCASS WEIGHT | PER LB. VALUE | CARCASS VALUE |
|---|----------------|--------------------|-------------------------|
| | 581 | \$1.65 | \$958.65 |
| | | | % OF TOTAL VALUE |
| MIDDLE BUFFALO VALUE <i>(NY STRIP, TOP SIRLOIN BUTT, TENDERLOIN, RIB-EYE)</i> | | \$590.58 | 61.61% |
| BUFFALO CHUCK VALUE <i>(SHOULDER CLOD, INSIDE CHUCK ROLL, BRISKET)</i> | | \$210.41 | 21.95% |
| BUFFALO ROUND VALUE <i>(PELLED KNUCKLE, TOP ROUND, FLAT, EYE OF ROUND)</i> | | \$259.93 | 27.11% |
| BUFFALO THIN MEATS <i>(TRI-TIP, BALL-TIP, FLANK STEAK, BBQ RIB, SKIRT)</i> | | \$43.61 | 4.55% |
| BUFFALO TRIM 87% | | \$408.32 | 42.59% |
| | | TOTAL VALUE | % MARK-UP |
| | | \$1,512.85 | 157.81% |

| WASTE ITEMS | LBS | % CARCASS WEIGHT |
|--------------|-------|------------------|
| FAT & KIDNEY | 38.45 | 6.62% |
| BONES | 104 | 17.90% |

| ANIMAL | SEX | PYG | ADJ. PYG | HCW | REA | KPH | YGM | FINAL YG | MAT LEAN | SKEL | MARB | LEAN L | FAT B | KPH | SHEAR FORCE |
|--------|------|-----|----------|-----|------|-----|-----|----------|----------|------|-----------|--------|-------|------|-------------|
| | BULL | 2.9 | 2.8 | 581 | 11.4 | 1.5 | | 2.2 | D | A | Slight 10 | 36.53 | - | 1.5% | 6.5 |



Bull

Final Live Weight At Home - 1,120 pounds

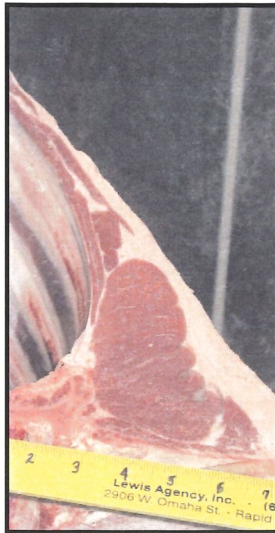
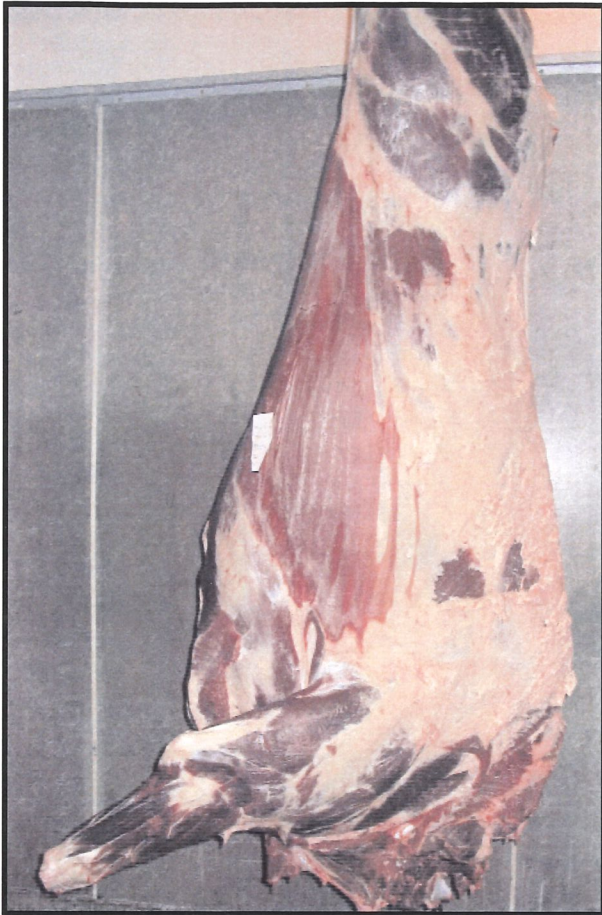
Hot Hanging Weight - 575 pounds

Weaned on November 4, 2005

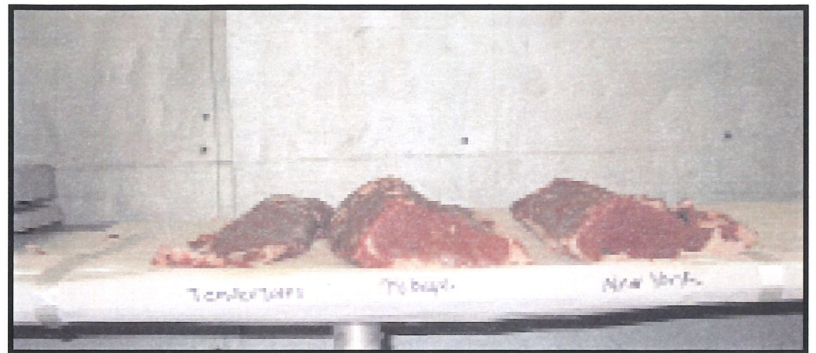
Weaning Weight - N/A

The bull was fed free choice alfalfa grass hay and four to five pounds of Bull Challenger pellets per day the first winter. He was fed the same way the first summer. On October 7, he was placed on free choice Bull Challenger pellets along with alfalfa grass hay. The Bull Challenger pellets are manufactured by CHS Nutrition. The bull was on finish feed for 93 days.

*Brad
Beavers*



2007 REALITY BASED CARCASS CLASS



| LIVE BUFFALO WEIGHT | CARCASS WEIGHT | PER LB. VALUE | CARCASS VALUE |
|--|----------------|--------------------|-------------------------|
| | 575 | \$1.65 | \$948.75 |
| | | | % OF TOTAL VALUE |
| MIDDLE BUFFALO VALUE (NY STRIP, TOP SIRLOIN BUTT, TENDERLOIN, RIB-EYE) | | \$573.85 | 60.48% |
| BUFFALO CHUCK VALUE (SHOULDER CLOD, INSIDE CHUCK ROLL, BRISKET) | | \$201.77 | 21.27% |
| BUFFALO ROUND VALUE (PELLED KNUCKLE, TOP ROUND, FLAT, EYE OF ROUND) | | \$239.54 | 25.25% |
| BUFFALO THIN MEATS (TRI-TIP, BALL-TIP, FLANK STEAK, BBQ RIB, SKIRT) | | \$42.64 | 4.49% |
| BUFFALO TRIM 89% | | \$435.96 | 45.95% |
| | | TOTAL VALUE | % MARK-UP |
| | | \$1,493.76 | 157.45% |

| WASTE ITEMS | LBS | % CARCASS WEIGHT |
|--------------|-------|------------------|
| FAT & KIDNEY | 42.25 | 7.35% |
| BONES | 105 | 18.26% |

| ANIMAL | SEX | PYG | ADJ. PYG | HCW | REA | KPH | YGM | FINAL YG | MAT LEAN | SKEL | MARB | LEAN L | FAT B | KPH | SHEAR FORCE |
|--------|------|-----|----------|-----|------|-----|-----|----------|----------|------|-----------|--------|-------|------|-------------|
| | BULL | 3.3 | 2.9 | 575 | 10.2 | 1.0 | | 2.6 | C | A | Traces 90 | 37.76 | - | 1.0% | 8.4 |



Bull

Final Live Weight At Home - 1,033 pounds

Hot Hanging Weight - 608 pounds

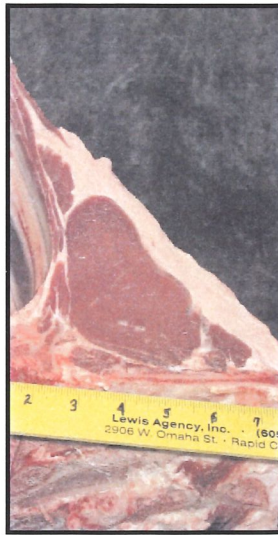
Weaned on October 28, 2005

Weaning Weight - 401 pounds

The bull was fed hay the first winter, with a combination of grass, grass/alfalfa, oat hay and millet hay. The first winter he was fed corn, oats and protein with free choice hay. The animal was removed from the feedlot 30 days before slaughter. He was finished on hay, grass, grass/alfalfa, millet and grain ration of corn screenings and extruded soybean. He was on this feed for 30 days.

*Susan
Maass*

2007 REALITY BASED CARCASS CLASS



| LIVE BUFFALO WEIGHT | CARCASS WEIGHT | PER LB. VALUE | CARCASS VALUE |
|--|----------------|--------------------|-------------------------|
| | 608 | \$1.65 | \$1,003.20 |
| | | | % OF TOTAL VALUE |
| MIDDLE BUFFALO VALUE (NY STRIP, TOP SIRLOIN BUTT, TENDERLOIN, RIB-EYE) | | \$622.32 | 62.03% |
| BUFFALO CHUCK VALUE (SHOULDER CLOD, INSIDE CHUCK ROLL, BRISKET) | | \$217.76 | 21.71% |
| BUFFALO ROUND VALUE (PELLED KNUCKLE, TOP ROUND, FLAT, EYE OF ROUND) | | \$250.75 | 25.00% |
| BUFFALO THIN MEATS (TRI-TIP, BALL-TIP, FLANK STEAK, BBQ RIB, SKIRT) | | \$41.99 | 4.19% |
| BUFFALO TRIM 89% | | \$438.60 | 43.72% |
| | | TOTAL VALUE | % MARK-UP |
| | | \$1,571.42 | 156.64% |

| WASTE ITEMS | LBS | % CARCASS WEIGHT |
|--------------|-------|------------------|
| FAT & KIDNEY | 58.05 | 9.55% |
| BONES | 99 | 16.28% |

| ANIMAL | SEX | PYG | ADJ. PYG | HCW | REA | KPH | YGM | FINAL YG | MAT LEAN | SKEL | MARB | LEAN L | FAT B | KPH | SHEAR FORCE |
|--------|------|-----|----------|-----|-----|-----|-----|----------|----------|------|-----------|--------|-------|------|-------------|
| | BULL | 3.3 | 3.0 | 608 | 9.5 | 1.5 | | 3.1 | D | A | Devoid 80 | 37.94 | - | 1.5% | 8.6 |



Bull

Final Live Weight At Home, 01-07-07 - 1,240 pounds

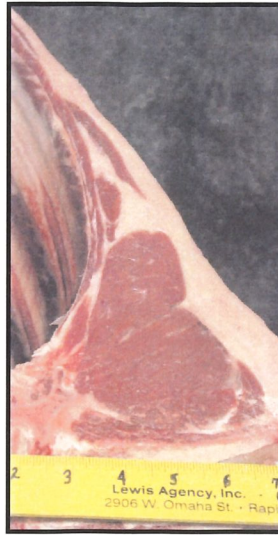
Hot Hanging Weight - 700 pounds

Weaned on December 3, 2005

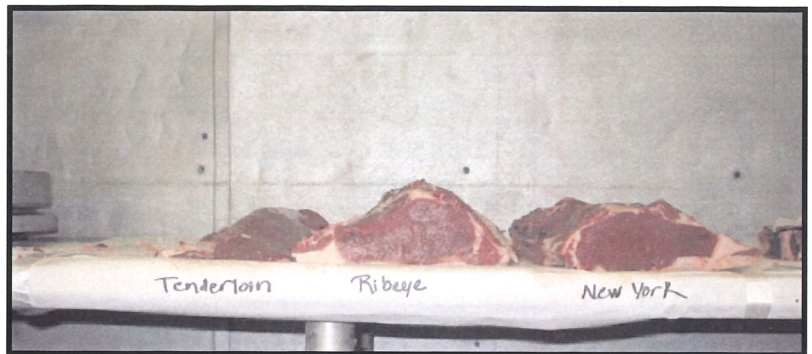
Weaning Weight - 475 pounds

The bull was weaned in December and backgrounded on grass hay and pellets for 120 days. He was then fed straight grass for 120 days. The bull was placed back on pellets and grass hay for 130 days.

*Wesley
Buckley*



2007 REALITY BASED CARCASS CLASS



| LIVE BUFFALO WEIGHT | CARCASS WEIGHT | PER LB. VALUE | CARCASS VALUE |
|--|----------------|--------------------|------------------|
| | 700 | \$1.65 | \$1,155.00 |
| <hr/> | | | |
| MIDDLE BUFFALO VALUE (NY STRIP, TOP SIRLOIN BUTT, TENDERLOIN, RIB-EYE) | | \$679.24 | 58.81% |
| BUFFALO CHUCK VALUE (SHOULDER CLOD, INSIDE CHUCK ROLL, BRISKET) | | \$253.62 | 21.96% |
| BUFFALO ROUND VALUE (PELLED KNUCKLE, TOP ROUND, FLAT, EYE OF ROUND) | | \$283.03 | 24.50% |
| BUFFALO THIN MEATS (TRI-TIP, BALL-TIP, FLANK STEAK, BBQ RIB, SKIRT) | | \$41.81 | 3.62% |
| BUFFALO TRIM 88% | | \$484.00 | 41.90% |
| | | TOTAL VALUE | % MARK-UP |
| | | \$1,741.70 | 150.80% |

| WASTE ITEMS | LBS | % CARCASS WEIGHT |
|--------------|------|------------------|
| FAT & KIDNEY | 82.3 | 11.76% |
| BONES | 114 | 16.29% |

| ANIMAL | SEX | PYG | ADJ. PYG | HCW | REA | KPH | YGM | FINAL YG | MAT LEAN | SKEL | MARB | LEAN L | FAT B | KPH | SHEAR FORCE |
|--------|------|-----|----------|-----|------|-----|-----|----------|----------|------|-----------|--------|-------|------|-------------|
| | BULL | 3.6 | 3.4 | 700 | 11.5 | 1.5 | | 3.2 | C | A | Traces 80 | 38.08 | - | 1.5% | 9.0 |



Bull

Final Live Weight At Home, 01/07/07 - 1,234 pounds

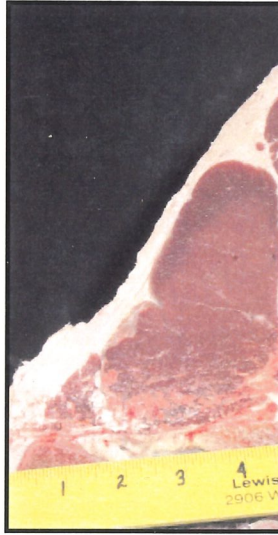
Hot Hanging Weight - 667 pounds

Weaned on December 30, 2005

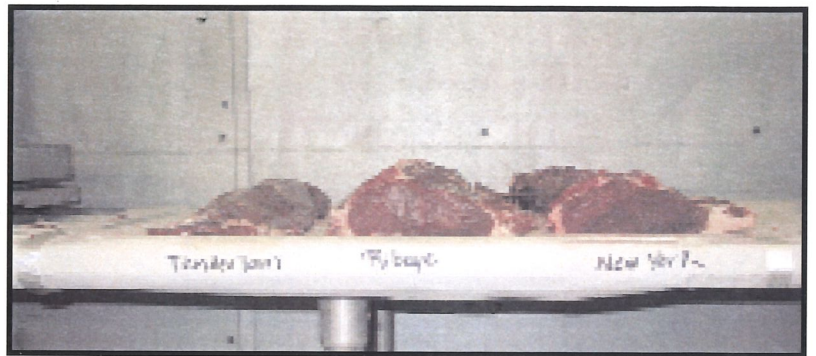
Weaning Weight - 518 pounds

The bull was weaned in December and backgrounded on grass hay and pellets for 120 days. He was then fed straight grass for 120 days. The bull was placed back on pellets and grass hay for 130 days.

*Sandy
Unpert*



2007 REALITY BASED CARCASS CLASS



| LIVE BUFFALO WEIGHT | CARCASS WEIGHT | PER LB. VALUE | CARCASS VALUE |
|--|----------------|--------------------|-------------------------|
| | 667 | \$1.65 | \$1,100.55 |
| | | | % OF TOTAL VALUE |
| MIDDLE BUFFALO VALUE (NY STRIP, TOP SIRLOIN BUTT, TENDERLOIN, RIB-EYE) | | \$638.09 | 57.98% |
| BUFFALO CHUCK VALUE (SHOULDER CLOD, INSIDE CHUCK ROLL, BRISKET) | | \$226.50 | 20.58% |
| BUFFALO ROUND VALUE (PELLED KNUCKLE, TOP ROUND, FLAT, EYE OF ROUND) | | \$283.41 | 25.75% |
| BUFFALO THIN MEATS (TRI-TIP, BALL-TIP, FLANK STEAK, BBQ RIB, SKIRT) | | \$47.21 | 4.29% |
| BUFFALO TRIM 89% | | \$464.36 | 42.19% |
| | | TOTAL VALUE | % MARK-UP |
| | | \$1,659.57 | 150.79% |

| WASTE ITEMS | LBS | % CARCASS WEIGHT |
|--------------|-------|------------------|
| FAT & KIDNEY | 55.55 | 8.33% |
| BONES | 113 | 16.94% |

| ANIMAL | SEX | PYG | ADJ. PYG | HCW | REA | KPH | YGM | FINAL YG | MAT LEAN | SKEL | MARB | LEAN L | FAT B | KPH | SHEAR FORCE |
|--------|------|-----|----------|-----|------|-----|-----|----------|----------|------|-----------|--------|-------|------|-------------|
| | BULL | 2.8 | 2.8 | 667 | 11.3 | 1.5 | | 2.6 | D | A | Traces 80 | 36.10 | - | 1.5% | 7.7 |



Bull

Final Live Weight At Home, 01/07/07 - 1,178 pounds

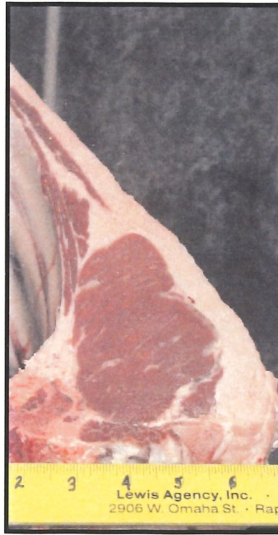
Hot Hanging Weight - 633 pounds

Weaned in December of 2005

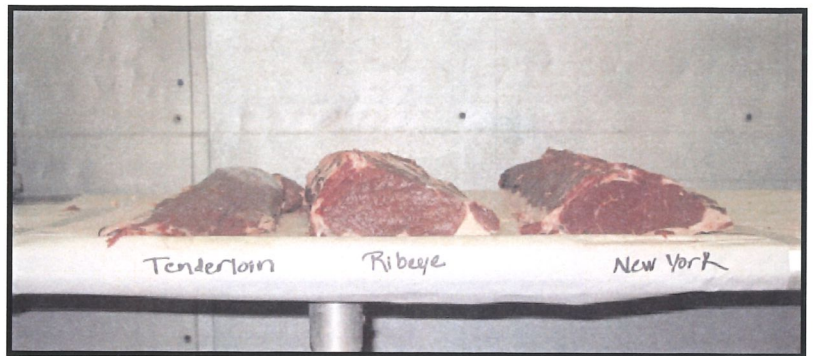
Weaning Weight - N/A

The bull was weaned in December and backgrounded on grass hay and pellets for 120 days. He was then fed straight grass for 120 days. The bull was placed back on pellets and grass hay for 130 days.

*David
Lauitt*



2007 REALITY BASED CARCASS CLASS



| LIVE BUFFALO WEIGHT | CARCASS WEIGHT | PER LB. VALUE | CARCASS VALUE |
|--|----------------|--------------------|------------------|
| | 633 | \$1.65 | \$1,044.45 |
| | | | % OF TOTAL VALUE |
| MIDDLE BUFFALO VALUE (NY STRIP, TOP SIRLOIN BUTT, TENDERLOIN, RIB-EYE) | | \$605.28 | 57.95% |
| BUFFALO CHUCK VALUE (SHOULDER CLOD, INSIDE CHUCK ROLL, BRISKET) | | \$224.15 | 21.46% |
| BUFFALO ROUND VALUE (PELLED KNUCKLE, TOP ROUND, FLAT, EYE OF ROUND) | | \$265.45 | 25.42% |
| BUFFALO THIN MEATS (TRI-TIP, BALL-TIP, FLANK STEAK, BBQ RIB, SKIRT) | | \$44.96 | 4.30% |
| BUFFALO TRIM 87% | | \$428.97 | 41.07% |
| | | TOTAL VALUE | % MARK-UP |
| | | \$1,568.81 | 150.20% |

| WASTE ITEMS | LBS | % CARCASS WEIGHT |
|--------------|-----|------------------|
| FAT & KIDNEY | 69 | 10.90% |
| BONES | 106 | 16.75% |

| ANIMAL | SEX | PYG | ADJ. PYG | HCW | REA | KPH | YGM | FINAL YG | MAT LEAN | SKEL | MARB | LEAN L | FAT B | KPH | SHEAR FORCE |
|--------|------|-----|----------|-----|------|-----|-----|----------|----------|------|----------|--------|-------|------|-------------|
| | BULL | 3.5 | 3.1 | 633 | 11.1 | 1.5 | | 2.8 | C | A | Slight 0 | 37.89 | - | 1.5% | 7.3 |



Bull

Final Live Weight At Home - 1,086 pounds

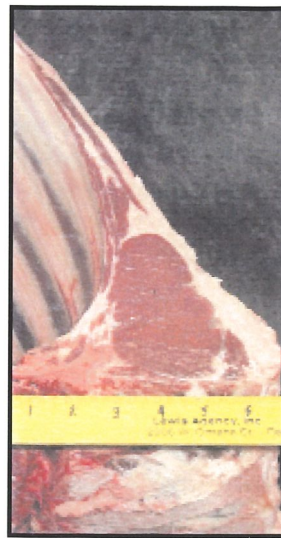
Hot Hanging Weight - 595 pounds

Weaned on November 14, 2005

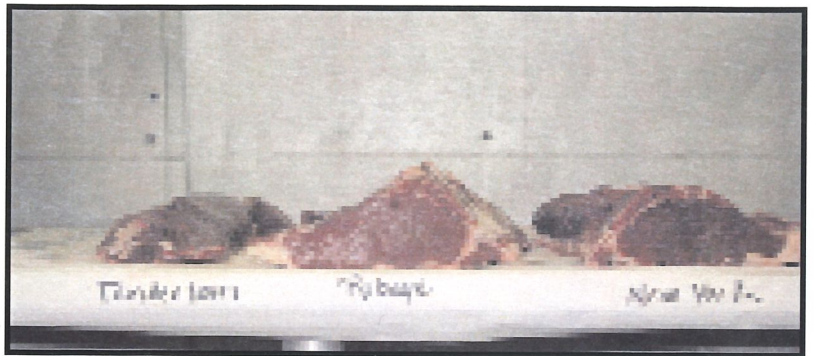
Weaning Weight - 540 pounds

The calf was fed free choice alfalfa and grass hay the first winter. The first summer he was on grass pasture. He was finished for 100 days on a mixture of corn and grass hay in a confinement lot.

Blue Valley



2007 REALITY BASED CARCASS CLASS



| LIVE BUFFALO WEIGHT | CARCASS WEIGHT | PER LB. VALUE | CARCASS VALUE |
|---|----------------|--------------------|-------------------------|
| | 595 | \$1.65 | \$981.75 |
| | | | % OF TOTAL VALUE |
| MIDDLE BUFFALO VALUE <i>(NY STRIP, TOP SIRLOIN BUTT, TENDERLOIN, RIB-EYE)</i> | | \$556.62 | 56.70% |
| BUFFALO CHUCK VALUE <i>(SHOULDER CLOD, INSIDE CHUCK ROLL, BRISKET)</i> | | \$218.51 | 22.26% |
| BUFFALO ROUND VALUE <i>(PELLED KNUCKLE, TOP ROUND, FLAT, EYE OF ROUND)</i> | | \$240.40 | 24.49% |
| BUFFALO THIN MEATS <i>(TRI-TIP, BALL-TIP, FLANK STEAK, BBQ RIB, SKIRT)</i> | | \$43.55 | 4.44% |
| BUFFALO TRIM 87% | | \$348.39 | 35.49% |
| | | TOTAL VALUE | % MARK-UP |
| | | \$1,407.47 | 143.36% |

| WASTE ITEMS | LBS | % CARCASS WEIGHT |
|--------------|-------|------------------|
| FAT & KIDNEY | 53.55 | 9.00% |
| BONES | 107 | 17.98% |

| ANIMAL | SEX | PYG | ADJ. PYG | HCW | REA | KPH | YGM | FINAL YG | MAT LEAN | SKEL | MARB | LEAN L | FAT B | KPH | SHEAR FORCE |
|--------|------|-----|----------|-----|-----|-----|-----|----------|----------|------|-----------|--------|-------|------|-------------|
| | BULL | 2.9 | 2.7 | 595 | 8.9 | 1.5 | | 3.0 | D | A | Traces 90 | 35.62 | - | 1.5% | 6.7 |



Heifer

Final Live Weight At Home - 848 pounds

Hot Hanging Weight - 436 pounds

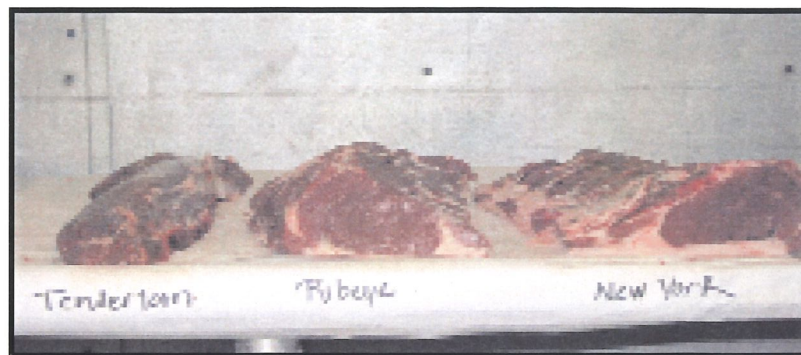
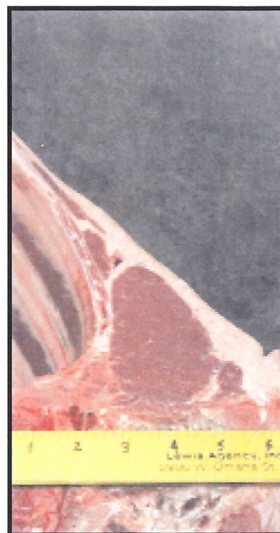
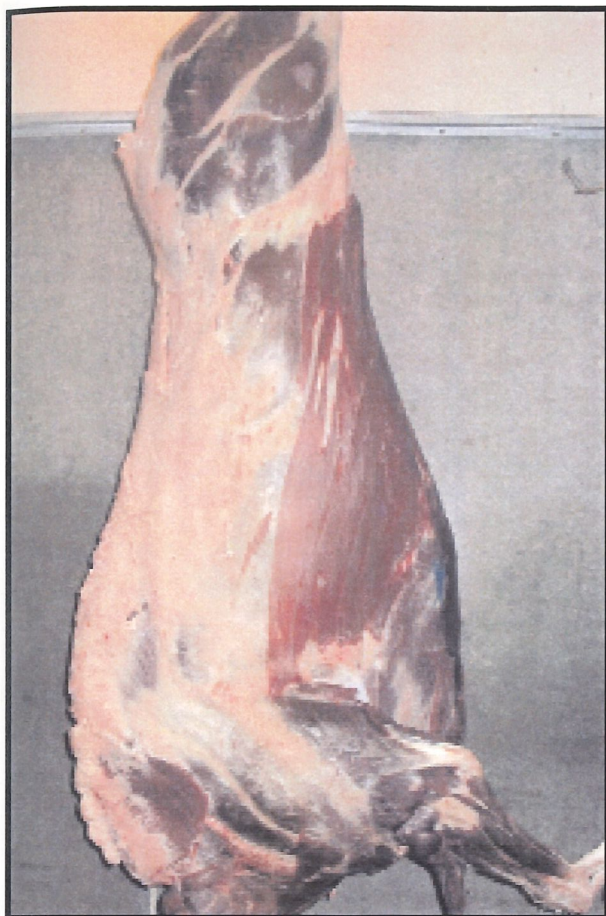
Weaned on November 4, 2005

Weaning Weight - N/A

The heifer was given free choice alfalfa/grass hay the first winter and the following summer. She was then finished on Bull Challenger, approximately seven to eight pounds per day along with free choice alfalfa/grass hay. She was on finish feed for 93 days.

*Brad
Beavers*

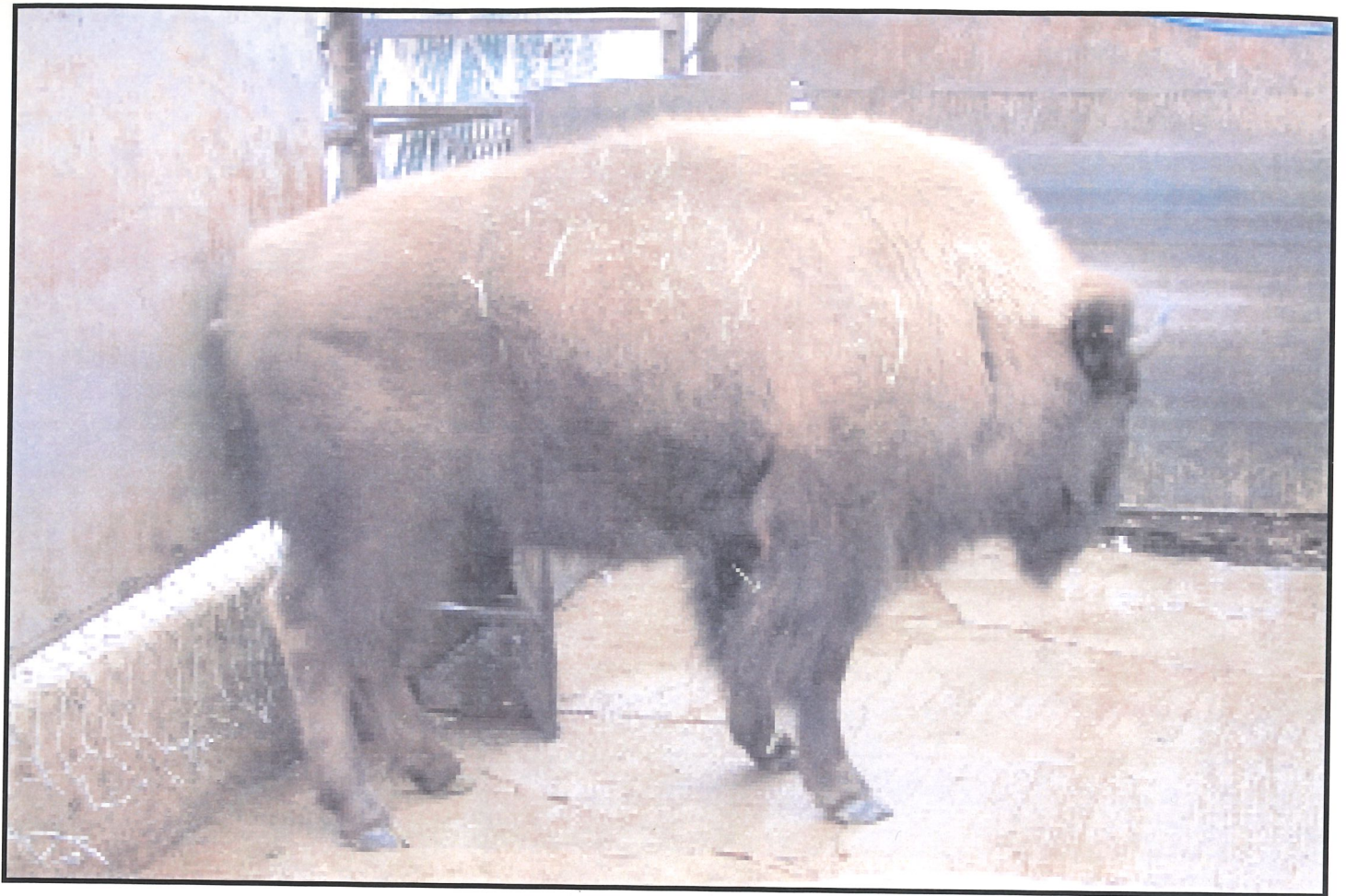
2007 REALITY BASED CARCASS CLASS



| LIVE BUFFALO WEIGHT | CARCASS WEIGHT | PER LB. VALUE | CARCASS VALUE |
|--|----------------|--------------------|------------------|
| | 436 | \$1.58 | \$687.57 |
| <hr/> | | | |
| MIDDLE BUFFALO VALUE (NY STRIP, TOP SIRLOIN BUTT, TENDERLOIN, RIB-EYE) | | \$454.98 | 66.17% |
| BUFFALO CHUCK VALUE (SHOULDER CLOD, INSIDE CHUCK ROLL, BRISKET) | | \$152.66 | 22.20% |
| BUFFALO ROUND VALUE (PELLED KNUCKLE, TOP ROUND, FLAT, EYE OF ROUND) | | \$187.15 | 27.22% |
| BUFFALO THIN MEATS (TRI-TIP, BALL-TIP, FLANK STEAK, BBQ RIB, SKIRT) | | \$32.69 | 4.75% |
| BUFFALO TRIM 88% | | \$321.10 | 46.70% |
| | | TOTAL VALUE | % MARK-UP |
| | | \$1,148.58 | 167.05% |

| WASTE ITEMS | LBS | % CARCASS WEIGHT |
|--------------|-------|------------------|
| FAT & KIDNEY | 33.05 | 7.58% |
| BONES | 77 | 17.66% |

| ANIMAL | SEX | PYG | ADJ. PYG | HCW | REA | KPH | YGM | FINAL YG | MAT LEAN | SKEL | MARB | LEAN L | FAT B | KPH | SHEAR FORCE |
|--------|-----|-----|----------|-----|-----|-----|-----|----------|----------|------|-----------|--------|-------|------|-------------|
| | HFR | 3.1 | 2.9 | 436 | 7.3 | 1.5 | | 3.0 | D | B | Traces 20 | 36.33 | - | 1.5% | 7.7 |



Heifer

Final Live Weight At Home - 840 pounds

Hot Hanging Weight - 458 pounds

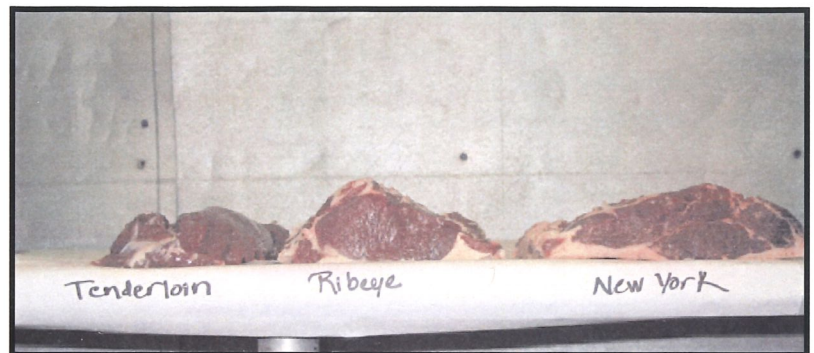
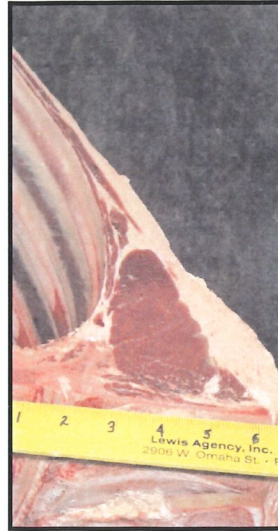
Weaned on November 14, 2005

Weaning Weight - 488 pounds

The calf was fed free choice alfalfa and grass hay the first winter. The first summer she was on grass pasture. She was finished for 100 days on a mixture of corn and grass hay in a confinement lot.

Blue Valley

2007 REALITY BASED CARCASS CLASS



| LIVE BUFFALO WEIGHT | CARCASS WEIGHT | PER LB. VALUE | CARCASS VALUE |
|--|----------------|--------------------|------------------|
| | 458 | \$1.58 | \$722.27 |
| <hr/> | | | |
| MIDDLE BUFFALO VALUE (NY STRIP, TOP SIRLOIN BUTT, TENDERLOIN, RIB-EYE) | | \$449.06 | 62.17% |
| BUFFALO CHUCK VALUE (SHOULDER CLOD, INSIDE CHUCK ROLL, BRISKET) | | \$142.82 | 19.77% |
| BUFFALO ROUND VALUE (PELLED KNUCKLE, TOP ROUND, FLAT, EYE OF ROUND) | | \$195.27 | 27.04% |
| BUFFALO THIN MEATS (TRI-TIP, BALL-TIP, FLANK STEAK, BBQ RIB, SKIRT) | | \$32.88 | 4.55% |
| BUFFALO TRIM 87% | | \$327.06 | 45.28% |
| | | TOTAL VALUE | % MARK-UP |
| | | \$1,147.09 | \$158.82% |

| WASTE ITEMS | LBS | % CARCASS WEIGHT |
|--------------|------|------------------|
| FAT & KIDNEY | 44.8 | 9.78% |
| BONES | 79 | 17.25% |

| ANIMAL | SEX | PYG | ADJ. PYG | HCW | REA | KPH | YGM | FINAL YG | MAT LEAN | SKEL | MARB | LEAN L | FAT B | KPH | SHEAR FORCE |
|--------|-----|-----|----------|-----|-----|-----|-----|----------|----------|------|----------|--------|-------|------|-------------|
| | HFR | 3.0 | 2.7 | 458 | 7.7 | 1.0 | | 1.7 | D | A | Traces 0 | 36.35 | - | 1.0% | 7.6 |



Heifer

Final Live Weight At Home - 976 pounds

Hot Hanging Weight - 581 pounds

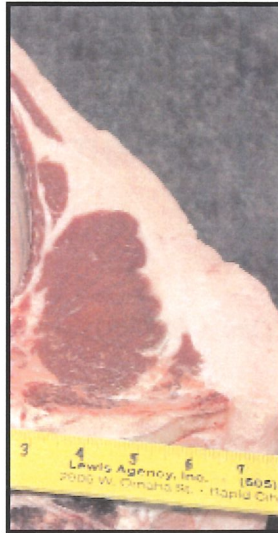
Weaned in October of 2005

Weaning Weight - 322 pounds

The heiferl was fed corn, oats and protein with free choice hay the first winter and through the first summer. She was finished in the same fashion, using corn,oats, minerals and vitamins, extruded beans for protein and wheat straw replaced hay in finishing ration. The heifer was on finish feed for 185 days.

*Red
Sather*

2007 REALITY BASED CARCASS CLASS



| LIVE BUFFALO WEIGHT | CARCASS WEIGHT | PER LB. VALUE | CARCASS VALUE |
|--|----------------|--------------------|-------------------------|
| | 581 | \$1.58 | \$916.24 |
| | | | % OF TOTAL VALUE |
| MIDDLE BUFFALO VALUE (NY STRIP, TOP SIRLOIN BUTT, TENDERLOIN, RIB-EYE) | | \$574.54 | 62.71% |
| BUFFALO CHUCK VALUE (SHOULDER CLOD, INSIDE CHUCK ROLL, BRISKET) | | \$184.61 | 20.15% |
| BUFFALO ROUND VALUE (PELLED KNUCKLE, TOP ROUND, FLAT, EYE OF ROUND) | | \$229.59 | 25.06% |
| BUFFALO THIN MEATS (TRI-TIP, BALL-TIP, FLANK STEAK, BBQ RIB, SKIRT) | | \$38.18 | 4.17% |
| BUFFALO TRIM 86% | | \$358.66 | 39.14% |
| | | TOTAL VALUE | % MARK-UP\$ |
| | | \$1,385.58 | \$151.23% |

| WASTE ITEMS | LBS | % CARCASS WEIGHT |
|--------------|------|------------------|
| FAT & KIDNEY | 97.6 | 16.80% |
| BONES | 85 | 14.63% |

| ANIMAL | SEX | PYG | ADJ. PYG | HCW | REA | KPH | YGM | FINAL YG | MAT LEAN | SKEL | MARB | LEAN L | FAT B | KPH | SHEAR FORCE |
|--------|-----|-----|----------|-----|-----|-----|-----|----------|----------|------|-----------|--------|-------|------|-------------|
| | HFR | 5.7 | 5.0 | 581 | 9.5 | 2.5 | | 5.2 | D | B | Traces 10 | 34.81 | - | 2.5% | 8.4 |

AVERAGE BULL

| LIVE BUFFALO WEIGHT | CARCASS WEIGHT | PER LB. VALUE | CARCASS VALUE |
|---|----------------|--------------------|-------------------------|
| | 630 | \$1.65 | \$1,039.50 |
| | | | % OF TOTAL VALUE |
| MIDDLE BUFFALO VALUE <i>(NY STRIP, TOP SIRLOIN BUTT, TENDERLOIN, RIB-EYE)</i> | | \$621.90 | 59.83% |
| BUFFALO CHUCK VALUE <i>(SHOULDER CLOD, INSIDE CHUCK ROLL, BRISKET)</i> | | \$226.94 | 21.83% |
| BUFFALO ROUND VALUE <i>(PELLED KNUCKLE, TOP ROUND, FLAT, EYE OF ROUND)</i> | | \$262.81 | 25.28% |
| BUFFALO THIN MEATS <i>(TRI-TIP, BALL-TIP, FLANK STEAK, BBQ RIB, SKIRT)</i> | | \$44.15 | 4.25% |
| BUFFALO TRIM 88% | | \$452.50 | 43.53% |
| | | TOTAL VALUE | % MARK-UP |
| | | \$1,608.30 | 154.72% |

| WASTE ITEMS | LBS | % CARCASS WEIGHT |
|--------------|-------|------------------|
| FAT & KIDNEY | 54.25 | 8.61% |
| BONES | 108.9 | 17.29% |

AVERAGE HEIFER

| LIVE BUFFALO WEIGHT | CARCASS WEIGHT | PER LB. VALUE | CARCASS VALUE |
|---|----------------|--------------------|-------------------------|
| | 492 | \$1.58 | \$775.88 |
| | | | % OF TOTAL VALUE |
| MIDDLE BUFFALO VALUE <i>(NY STRIP, TOP SIRLOIN BUTT, TENDERLOIN, RIB-EYE)</i> | | \$492.86 | 63.52% |
| BUFFALO CHUCK VALUE <i>(SHOULDER CLOD, INSIDE CHUCK ROLL, BRISKET)</i> | | \$160.02 | 20.62% |
| BUFFALO ROUND VALUE <i>(PELLED KNUCKLE, TOP ROUND, FLAT, EYE OF ROUND)</i> | | \$203.99 | 26.29% |
| BUFFALO THIN MEATS <i>(TRI-TIP, BALL-TIP, FLANK STEAK, BBQ RIB, SKIRT)</i> | | \$34.58 | 4.46% |
| BUFFALO TRIM 87% | | \$336.54 | 43.38% |
| | | TOTAL VALUE | % MARK-UP\$ |
| | | \$1,227.99 | \$158.27% |

| WASTE ITEMS | LBS | % CARCASS WEIGHT |
|--------------|-------|------------------|
| FAT & KIDNEY | 58.48 | 11.89% |
| BONES | 80.33 | 16.33% |