

## DTBA 2002 Reality Based Carcass Class *Program Details*

The Dakota Territory Buffalo Association (DTBA) held the second Reality Based Carcass Class in conjunction with the 2002 Black Hills Buffalo Classic Show and Sale. Last year, the carcass class offered another dimension to the DTBA's already successful live animal show and sale. Through this new class, the association has been able to focus on and give attention to the driving force of the buffalo industry, quality meat production.

Buffalo ranchers produce some of the healthiest, most appetizing red meat in the world and consumers can and will continue to demand this meat product. With that in mind, the DTBA decided to again host a carcass class that will help to educate producers on the economic benefits of taking their bull calves all the way to slaughter weight. Additionally, for the first time ever in the buffalo industry, the DTBA opened up the contest to heifers. With the addition of 10 available spots for heifers, this contest will mark the first time any data has ever been recorded on slaughter heifers. A total of 20 entries were accepted, 10 each of bulls and heifers. Trophies will awarded for the first three places. There will also be a \$5,000 cash prize for the first place carcass in the bulls and another \$5,000 cash award for the highest placing female carcass.

The success of last year's contest was partly due to the unique nature of it. About a year and a half ago, Buffalo, SD producer, Sandy Limpert, approached Bruce Anderson of RC Western Meats in Rapid City, SD. What Limpert was suggesting was to do a carcass contest, but with a different twist. He wanted to have the contest winner determined based on the retail value of the meat the animal was able to put in the box. This is an idea that Limpert has been kicking around for a number of years and has been fine-tuning the details. Having been told it couldn't be done, that just spurred him on to find a way to do it. When he approached Anderson, Anderson was intrigued with the idea and also, being a large regional bison meat purveyor, wanted to know the results for his own personal experience. After much discussion and lots of fine tuning, the Dakota Territory Buffalo Association (DTBA) was the official host of the new Reality-Based Carcass Class.

The contest idea is simple. After the animals are delivered and a live weight obtained, they are then slaughtered. A hot hanging weight is recorded. After hanging in the cooler for a set amount of time, the carcasses are halved and then quartered. Under the watchful eye of an independent party, in this case, Dr. Robert Maddock of South Dakota State University, the meat is trimmed to a quarter inch of fat cover. All the fat that was trimmed off is weighed. Each cut is then weighed with a consistent, current value per pound put on them. The remaining bones, minus the trimmed off meat, are also weighed. A sample of burger from each carcass is cooked and the fat content measured. Anderson has developed a sliding scale in which to base value of the burger on its percentage of lean meat, meaning the leaner the meat, the more it was worth per pound.

Upon the completion of the contest, a sheet is made for each entry. It contains data such as the carcass weight, the carcass value, the middle value, the chuck value, the round value, the thin meats value and the trim. It also contains the waste items, including the fat and kidney and the bones. The winner is determined by the highest percentage of growth from the carcass value to the retail value.

So, what is accomplished by this reality-based contest? Limpert hopes that the data recorded and provided to the producers will help them understand their feeding program and how it affects the final product. From Anderson's point of view, it helps producers know what kind of animal will make the packer and the producer the most money. Over time, the records kept from this type of contest will help producers make genetic and production decisions that will help their yields and produce an efficient product. When the data from the first contest was released to the public, there were many calls to the association noting that this industry first had done it's job in generating the beginning of a new database for buffalo meat producers.

Producers who entered the contest this year were asked to provide as much background data as possible on their animal, including genetic history, growth progress, feeding program, traveling information, nearly anything that might be recordable. Once again, photographs of the live animals were taken and photographs were taken throughout the entire process to record each entry and help producers and consumers to better understand the value of the meat they produce and consume.

Consignors entered in the 2006 Reality Based Carcass Class

BH - Blue Valley Ranch, manager Perry Handyside, Kremmling, CO  
BH - Beaver Creek Buffalo Co., Brad Beavers, Jefferson, SD  
BH - Gehl's Buffalo Hill Ranch, Mark & Kathy Gehl, Prescott, WI  
BH - Diamond Tail Ranch, Scott Butcher, mgr, Jelm, WY  
BH - Mosquito Park Enterprises, Rod Sather, Vivian, SD  
B - Colorado Bison Co. at Hay Draw Ranch, Merle & Susan Maass, Union Center, SD  
BH - Quarter Circle Y Co. - Monty Hepper, Mobridge, SD  
B - Slim Buttes Buffalo Ranch, Sandy & Jacki Limpert, Buffalo, SD  
B - Slim Buttes Buffalo Ranch, Brodie Limpert, Buffalo, SD

Placings

**Bulls:**

- 1. Skull Creek Bison, Wayne & LeAnn Buchholz, Rhame, ND**
- 2. Quarter Circle Y Co., Monty & Tammy Hepper, Mobridge, SD**
- 3. Slim Buttes Buffalo Ranch, Brodie Limpert, Buffalo, SD**

**Heifers:**

- 1. Diamond Tail Ranch, Scott Butcher, mgr. Jelm, WY**
- 2. Mosquito Park Enterprises, Rod Sather, Vivian, SD**
- 3. Blue Valley Ranch, Perry Handyside, mgr. Tim Robertson, Livestock Foreman, Kremmling, Co.**

2006

Animal	Sex	Yield Grade		HCW	REA	KPH	YGM	YGA	MAT		MARB	Lean L	Fat B	pH	Shear Force
		MFAT	AFAT						LEAN	SKEL					
1	Bull	0.32	0.16	537	8.7	2.0	3.0	2.6	190	210	280	34.11	.	.	11.7
3	Bull	0.56	0.44	550	9.0	2.0	3.5	3.2	160	150	250	32.97	.	.	11.0
5	Bull	0.56	0.36	620	10.4	2.5	3.4	2.9	140	160	290	35.35	.	.	5.7
7	Bull	0.28	0.16	541	10.8	2.0	2.2	1.9	190	190	280	33.54	.	.	11.3
8	Bull	0.60	0.52	599	10.5	2.0	3.3	3.1	160	170	310	34.17	.	.	9.2
9	Bull	0.76	0.56	586	11.2	2.0	3.4	2.9	190	170	290	34.33	.	.	10.5
11	Bull	0.52	0.32	611	11.0	2.0	3.0	2.5	140	150	310	33.96	.	.	9.0
12	Bull	0.60	0.40	593	8.6	2.0	3.9	3.4	190	190	290	34.40	.	.	8.6
15	Bull	0.52	0.32	570	9.2	2.0	3.4	2.9	200	190	240	33.87	.	.	10.1
16	Bull	0.12	0.08	696	10.3	2.0	2.5	2.4	240	330	230	33.15	.	.	11.5
2	Heifer	0.20	0.08	406	9.2	2.0	2.0	1.7	190	180	130	31.19	.	.	11.1
4	Heifer	0.76	0.52	559	10.2	2.0	3.7	3.1	190	280	270	33.97	.	.	4.2
6	Heifer	0.88	0.60	502	8.2	2.5	4.5	3.8	170	150	260	34.41	.	.	7.0
10	Heifer	1.04	0.64	517	8.2	2.5	4.9	3.9	160	150	300	33.40	.	.	6.5
13	Heifer	0.92	0.56	447	9.2	2.0	4.0	3.1	150	220	290	33.83	.	.	11.5
14	Heifer	0.60	0.24	423	8.4	2.0	3.3	2.4	200	140	260	35.07	.	.	9.2
17	Heifer	1.20	0.88	615	9.5	2.5	5.3	4.5	410	450	250	30.10	.	.	10.2
Average		0.61	0.40	551	9.6	2.1	3.5	3.0	192	205	266	33.64			9.3
Bull Avg		0.50	0.35	596	10.1	2.1	3.2	2.8	179	189	277	33.97			9.7
Heifer Avg		0.80	0.50	496	9.0	2.2	4.0	3.2	210	224	251	33.14			8.5
Beef Average		0.48	0.49	787	13.1	2.3	2.9	3.0	165	167	423	39.5	14.3	5.50	8.0

Consignors entered in the 2006 Reality Based Carcass Class

BH - Blue Valley Ranch, manager Perry Handyside, Kremmling, CO  
BH - Beaver Creek Buffalo Co., Brad Beavers, Jefferson, SD  
BH - Gehl's Buffalo Hill Ranch, Mark & Kathy Gehl, Prescott, WI  
BH - Diamond Tail Ranch, Scott Butcher, mgr, Jelm, WY  
BH - Mosquito Park Enterprises, Rod Sather, Vivian, SD  
B - Colorado Bison Co. at Hay Draw Ranch, Merle & Susan Maass, Union Center, SD  
BH - Quarter Circle Y Co. - Monty Hepper, Mobridge, SD  
B - Slim Buttes Buffalo Ranch, Sandy & Jacki Limpert, Buffalo, SD  
B - Slim Buttes Buffalo Ranch, Brodie Limpert, Buffalo, SD

Placings

**Bulls:**

1. Skull Creek Bison, Wayne & LeAnn Buchholz, Rhame, ND
2. Quarter Circle Y Co., Monty & Tammy Hepper, Mobridge, SD
3. Slim Buttes Buffalo Ranch, Brodie Limpert, Buffalo, SD
4. Colorado Bison Co., Merle & Susan Maass
5. Diamond Tail Ranch, Scott Butcher
6. Slim Buttes Buffalo Ranch, Sandy Limpert
7. Beaver Creek Buffalo Co., Brad Beavers
8. Blue Valley Ranch
9. Mosquito Park Enterprises - DQ - did not make weight
10. Gehl's Buffalo Hill Ranch - DQ - did not make weight

**Heifers:**

1. Diamond Tail Ranch, Scott Butcher, mgr. Jelm, WY
2. Mosquito Park Enterprises, Rod Sather, Vivian, SD
3. Blue Valley Ranch, Perry Handyside, mgr. Tim Robertson, Livestock Foreman, Kremmling, Co.
4. Skull Creek Bison, Wayne & LeAnn Buchholz
5. Quarter Circle Y Co., Monty & Tammy Hepper
6. Gehl's Buffalo Hill Ranch - DQ - did not make weight
7. Beaver Creek Buffalo Co., Brad Beavers - DQ - did not make weight

Analysis of the Meat Industry as it Relates to the Reality-Based Carcass Class  
By Bruce Anderson

The meat industry is an ever-changing business, driven by an ever-changing consumer. We are now in the midst of another huge change in the meat business as it pertains to buffalo. As you watch the price of buffalo change you may feel that it is driven by an across the board change in meat prices. In fact it is being driven by consumer's demand for lean ground buffalo meat. (This is why heifers are lagging so far behind bulls.) Buffalo trim price has more than doubled while steak cuts are up from 20-30%. In the past around 50% of a buffalo carcass ended up in some form of ground product. Now another 25% of the buffalo is ending up being ground. The relative leanness of the chuck and round cuts make them prime product for grinding. With these items going to feed the nationwide explosion for ground buffalo that leaves only a handful of steak cuts to support the rest of the carcass value. In past contests we used the same meat price figures from the late 90's. These prices were a result of more importance being placed on individual meat cuts carrying a larger value. Today's pricing reflects prices that will consistently turn inventory and make buffalo meat attractive in the marketplace. In an effort to keep up with these changes I have changed the contest so that there are two sets of figures derived from each buffalo. The winner will continue to be judged as it was before, but we are going to see if the lean value of each carcass would make it superior in today's market. Sandy Limpert, the DTBA officials, and I will continue to assess the market, and we will do our best to keep this contest pertinent to the evolving buffalo meat business. If you have any questions I would be glad to do my best to answer them.



Bull

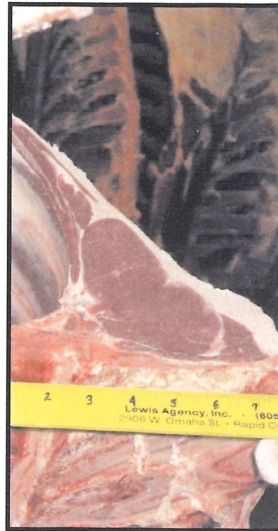
Final Live Weight At Home - 1,026 pounds

Hot Hanging Weight - 541 pounds  
(animal eliminated from contest as it did not meet minimum weight)

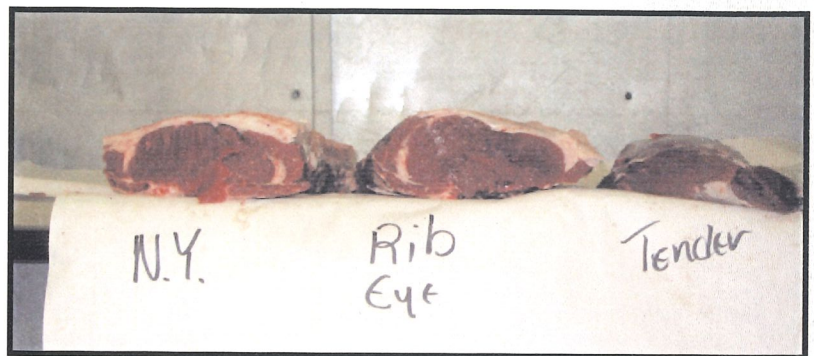
Weaned on December 30, 2004

Weaning Weight - 435 pounds

The bull was fed oats and hay, minerals and vitamins for the first winter. The following summer he was fed corn, oats and hay and minerals and vitamins. The bull was on finish feed for 120 days and was fed rolled corn, whole oats, 32 percent protein pellets and straw.



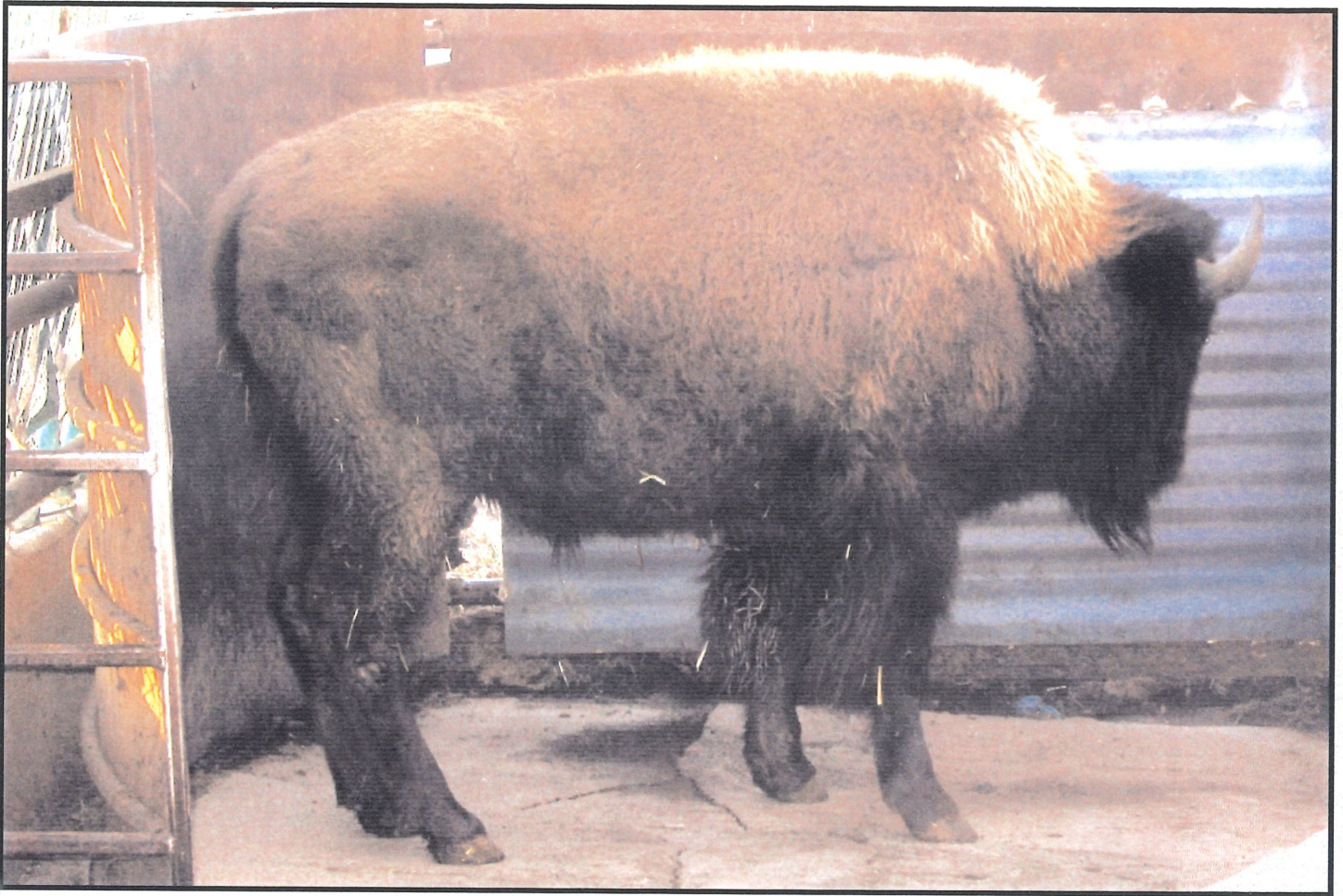
# 2006 REALITY BASED CARCASS CLASS



CARCASS WEIGHT 541	USDA PER LB. VALUE \$1.72	PER LB. VALUE \$2.38	USDA CARCASS VALUE \$930.52	CARCASS VALUE \$1,287.58
<b>% OF TOTAL VALUE</b>				
<b>MIDDLE BUFFALO VALUE</b> <i>(NY STRIP, TOP SIRLOIN BUTT, TENDERLOIN, RIB-EYE)</i>	\$579.31	\$757.53	62.26%	58.83%
<b>BUFFALO CHUCK VALUE</b> <i>(SHOULDER CLOD, INSIDE CHUCK ROLL, BRISKET)</i>	\$214.77	\$262.18	23.08%	20.36%
<b>BUFFALO ROUND VALUE</b> <i>(PELLED KNUCKLE, TOP ROUND, FLAT, EYE OF ROUND)</i>	\$244.32	\$412.00	26.26%	32.00%
<b>BUFFALO THIN MEATS</b> <i>(TRI-TIP, BALL-TIP, FLANK STEAK, BBQ RIB, SKIRT)</i>	\$42.63	\$63.49	4.58%	4.93%
<b>BUFFALO TRIM 87%</b>	\$373.52	\$441.14	40.14%	34.26%
	<b>TOTAL VALUE</b> \$1,454.55	<b>TOTAL VALUE</b> \$1,936.34	<b>% MARK-UP</b> 156.32%	<b>% MARK-UP</b> 150.39%

WASTE ITEMS	LBS	% CARCASS WEIGHT
FAT & KIDNEY	27.35	5.06%
BONES	100	18.48%

ANIMAL	SEX	YEILD GRADE		HCW	REA	KPH	YGM	YGA	LEAN	MAT	SKEL	MARB	LEAN L	FAT B	PH	SHEAR FORCE
	BULL	0.28	0.16	541	10.8	2.0	2.2	1.9	190		190	280	33.54	-	-	11.3



## Bull

Final Live Weight At Home - 1,000 pounds on October 29, 2005

Hot Hanging Weight - 537 pounds

(animal eliminated from contest as it did not meet minimum weight)

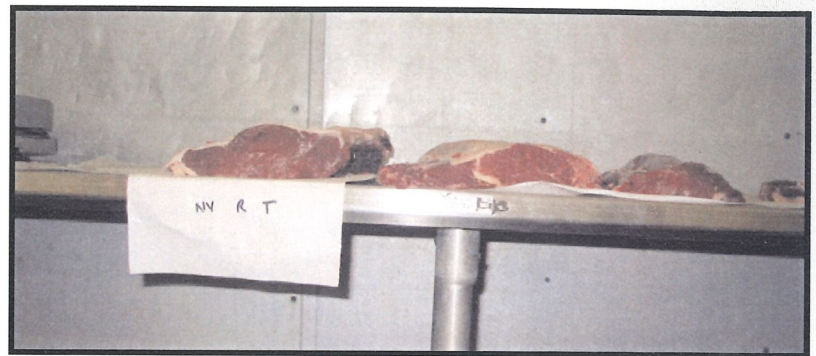
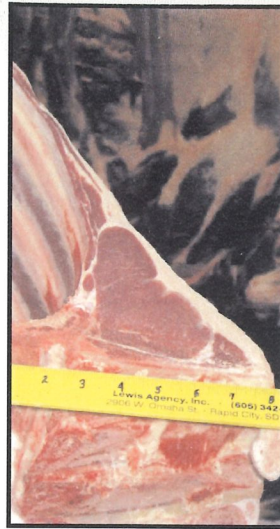
Weaned on November 9, 2004

Weaning Weight - 525 pounds

The bull was fed 50 percent rolled oats with 50 percent cracked corn, free choice hay and mineral the first winter. The animal was fed the same ration the following summer and also as a finish feed. Grass hay, oats, corn and mineral were used as a finishing feed and the bull was on the finish ration for 120 days.



# 2006 REALITY BASED CARCASS CLASS

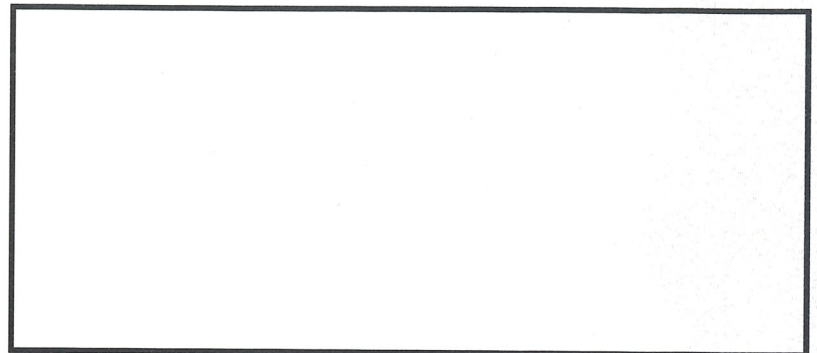
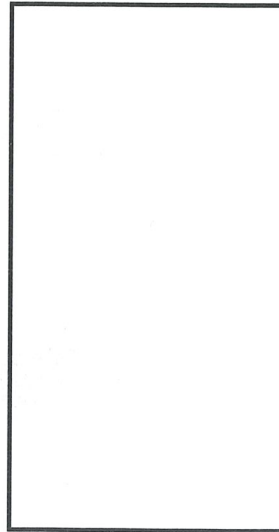
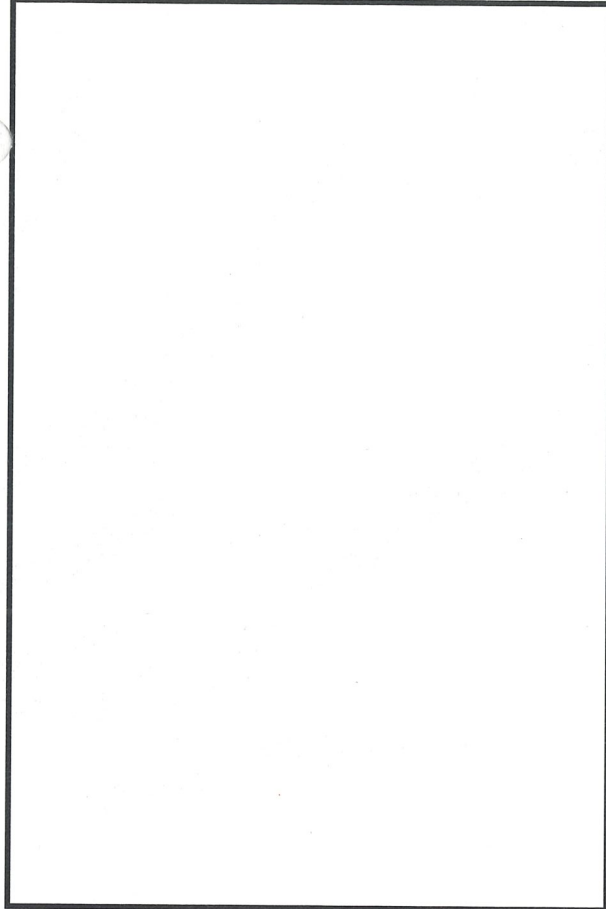


CARCASS WEIGHT 537	USDA PER LB. VALUE \$1.72	PER LB. VALUE \$2.38	USDA CARCASS VALUE \$923.64	CARCASS VALUE \$1,278.06
% OF TOTAL VALUE				
<b>MIDDLE BUFFALO VALUE</b> (NY STRIP, TOP SIRLOIN BUTT, TENDERLOIN, RIB-EYE)	\$596.64	\$781.55	64.60%	61.15%
<b>BUFFALO CHUCK VALUE</b> (SHOULDER CLOD, INSIDE CHUCK ROLL, BRISKET)	\$223.31	\$272.84	24.18%	21.35%
<b>BUFFALO ROUND VALUE</b> (PELLED KNUCKLE, TOP ROUND, FLAT, EYE OF ROUND)	\$252.01	\$426.38	27.28%	33.36%
<b>BUFFALO THIN MEATS</b> (TRI-TIP, BALL-TIP, FLANK STEAK, BBQ RIB, SKIRT)	\$36.62	\$55.32	3.96%	4.33%
<b>BUFFALO TRIM 88%</b>	\$350.90	\$400.20	37.99%	31.31%
	<b>TOTAL VALUE</b> \$1,459.48	<b>TOTAL VALUE</b> \$1,936.29	<b>% MARK-UP</b> 158.01%	<b>% MARK-UP</b> 151.50%

WASTE ITEMS	LBS	% CARCASS WEIGHT
FAT & KIDNEY	27.2	5.07%
BONES	94	17.50%

ANIMAL	SEX	YEILD GRADE		HCW	REA	KPH	YGM	YGA	MAT		MARB	LEAN L	FAT B	PH	SHEAR FORCE
	BULL	0.32	0.16	537	8.7	2.0	3.0	2.6	LEAN 190	SKEL 210	280	34.11	-	-	11.7

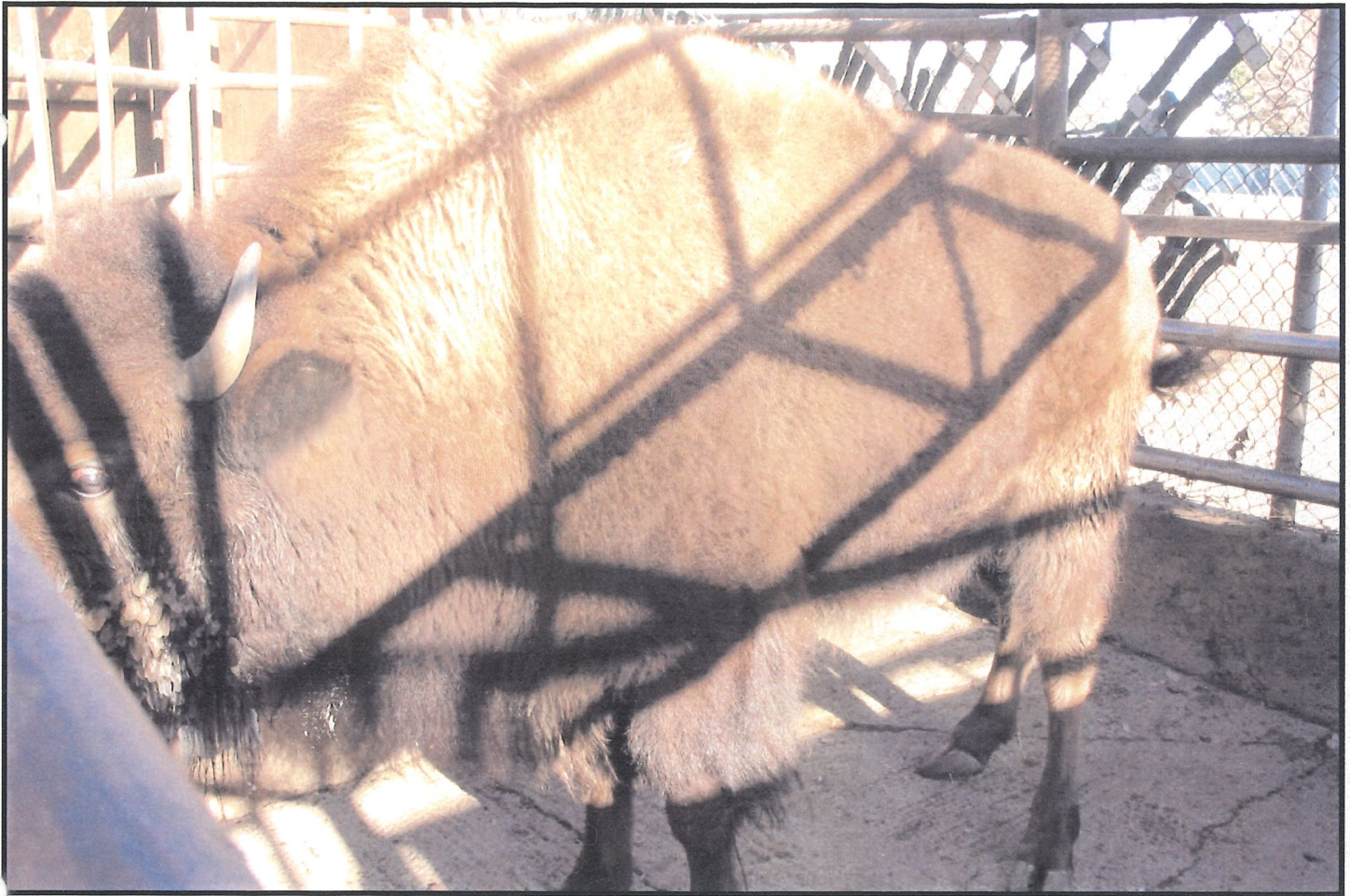
# 2006 REALITY BASED CARCASS CLASS



CARCASS WEIGHT	USDA PER LB. VALUE	PER LB. VALUE	USDA CARCASS VALUE	CARCASS VALUE
587.8	\$1.72	\$2.38	\$1,011.02	\$1,398.96
% OF TOTAL VALUE				
<b>MIDDLE BUFFALO VALUE</b> <i>(NY STRIP, TOP SIRLOIN BUTT, TENDERLOIN, RIB-EYE)</i>	\$636.73	\$830.96	62.98%	59.40%
<b>BUFFALO CHUCK VALUE</b> <i>(SHOULDER CLOD, INSIDE CHUCK ROLL, BRISKET)</i>	\$232.14	\$282.88	22.96%	20.22%
<b>BUFFALO ROUND VALUE</b> <i>(PELLED KNUCKLE, TOP ROUND, FLAT, EYE OF ROUND)</i>	\$254.95	\$430.51	25.22%	30.77%
<b>BUFFALO THIN MEATS</b> <i>(TRI-TIP, BALL-TIP, FLANK STEAK, BBQ RIB, SKIRT)</i>	\$39.91	\$60.63	3.95%	4.33%
<b>BUFFALO TRIM</b> 86%	\$386.78	\$467.57	38.26%	33.42%
	<b>TOTAL VALUE</b> \$1,550.51	<b>TOTAL VALUE</b> \$2,072.55	<b>% MARK-UP</b> 153.36%	<b>% MARK-UP</b> 148.15%

WASTE ITEMS	LBS	% CARCASS WEIGHT
FAT & KIDNEY	35.65	6.06%
BONES	105	17.86%

ANIMAL	SEX	YEILD GRADE		HCW	REA	KPH	YGM	YGA	MAT		LEAN L	FAT B	PH	SHEAR FORCE	
Average	BULL	MFAT	AFAT	596	10.1	2.1	3.2	2.8	LEAN	SKEL	MARB	33.97	-	-	9.7



Heifer

Final Live Weight At Home - 850 pounds

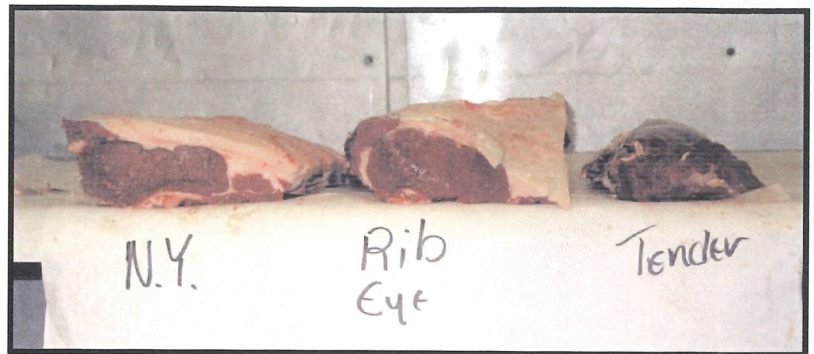
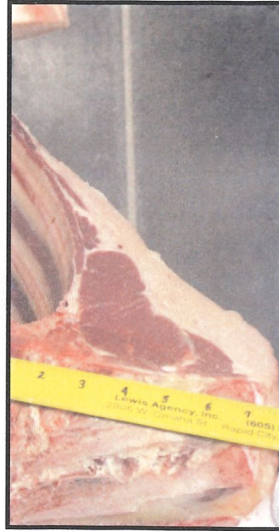
Hot Hanging Weight - 447 pounds

Weaned on November 15, 2004

Weaning Weight - 350 pounds

The heifer was fed a mixture of two pounds grass hay and one pound 14% range cake for the first winter and grass hay and the 14% cake for the first summer. She was finished on the same ration in addition to feeding a grain-screened pellet. The heifer was on finish feed for 180 days.

# 2006 REALITY BASED CARCASS CLASS



CARCASS WEIGHT 447	USDA PER LB. VALUE \$1.58	PER LB. VALUE \$2.38	USDA CARCASS VALUE \$706.26	CARCASS VALUE \$1,063.86
% OF TOTAL VALUE				
<b>MIDDLE BUFFALO VALUE</b> (NY STRIP, TOP SIRLOIN BUTT, TENDERLOIN, RIB-EYE)	\$521.77	\$682.04	73.88%	64.11%
<b>BUFFALO CHUCK VALUE</b> (SHOULDER CLOD, INSIDE CHUCK ROLL, BRISKET)	\$169.43	\$206.47	23.99%	19.41%
<b>BUFFALO ROUND VALUE</b> (PELLED KNUCKLE, TOP ROUND, FLAT, EYE OF ROUND)	\$187.04	\$315.75	26.48%	29.68%
<b>BUFFALO THIN MEATS</b> (TRI-TIP, BALL-TIP, FLANK STEAK, BBQ RIB, SKIRT)	\$33.00	\$50.89	4.67%	4.78%
<b>BUFFALO TRIM 86%</b>	\$293.04	\$357.72	41.49%	33.62%
	<b>TOTAL VALUE</b> \$1,204.28	<b>TOTAL VALUE</b> \$1,612.87	<b>% MARK-UP</b> 170.52%	<b>% MARK-UP</b> 151.61%

WASTE ITEMS	LBS	% CARCASS WEIGHT
FAT & KIDNEY	38.35	8.58%
BONES	78	17.45%

ANIMAL	SEX	YEILD	GRADE	HCW	REA	KPH	YGM	YGA	LEAN	MAT	MARB	LEAN	FAT	PH	SHEAR
	HEIFER	0.92	0.56	447	9.2	2.0	4.0	3.1	150	220	290	33.83	-	-	11.5



Heifer

Final Live Weight At Home - 960 pounds

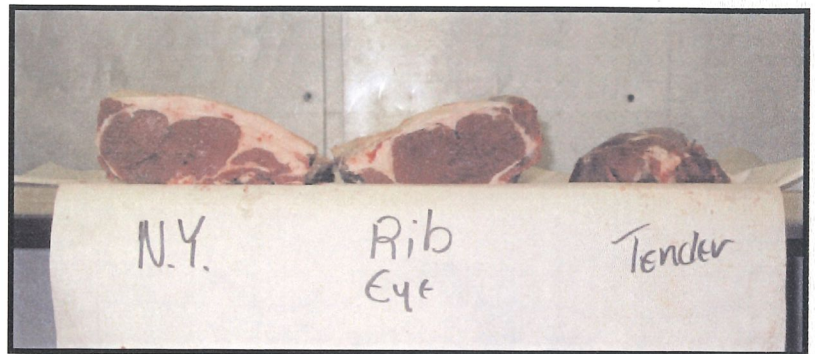
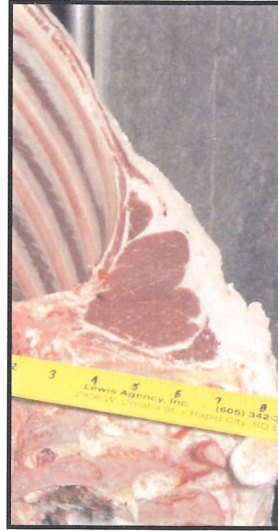
Hot Hanging Weight - 502 pounds

Weaned on December 30, 2004

Weaning Weight - 400 pounds

The heifer was fed oats and hay, minerals and vitamins for the first winter. The following summer she was fed corn, oats and hay and minerals and vitamins. The heifer was on finish feed for 120 days and was fed rolled corn, whole oats, 32 percent protein pellets and straw.

# 2006 REALITY BASED CARCASS CLASS



CARCASS WEIGHT 502	USDA PER LB. VALUE \$1.58	PER LB. VALUE \$2.38	USDA CARCASS VALUE \$793.16	CARCASS VALUE \$1,194.76
<b>% OF TOTAL VALUE</b>				
<b>MIDDLE BUFFALO VALUE</b> <i>(NY STRIP, TOP SIRLOIN BUTT, TENDERLOIN, RIB-EYE)</i>	\$556.05	\$723.81	70.11%	60.58%
<b>BUFFALO CHUCK VALUE</b> <i>(SHOULDER CLOD, INSIDE CHUCK ROLL, BRISKET)</i>	\$187.66	\$229.05	23.66%	19.17%
<b>BUFFALO ROUND VALUE</b> <i>(PELLED KNUCKLE, TOP ROUND, FLAT, EYE OF ROUND)</i>	\$227.68	\$384.42	28.71%	32.18%
<b>BUFFALO THIN MEATS</b> <i>(TRI-TIP, BALL-TIP, FLANK STEAK, BBQ RIB, SKIRT)</i>	\$35.20	\$52.72	4.44%	4.41%
<b>BUFFALO TRIM 86%</b>	\$324.12	\$395.66	40.86%	33.12%
	<b>TOTAL VALUE</b> \$1,330.71	<b>TOTAL VALUE</b> \$1,785.66	<b>% MARK-UP</b> 148.94%	<b>% MARK-UP</b> 149.46%

WASTE ITEMS	LBS	% CARCASS WEIGHT
FAT & KIDNEY	50.2	10.00%
BONES	79	15.74%

ANIMAL	SEX	YEILD GRADE		HCW	REA	KPH	YGM	YGA	LEAN	MAT	SKEL	MARB	LEAN L	FAT B	PH	SHEAR FORCE
	HEIFER	0.88	0.60	502	8.2	2.5	4.5	3.8	170		150	260	34.41	-	-	7.0



Heifer

Final Live Weight At Home - 1,106 pounds on November 14, 2005

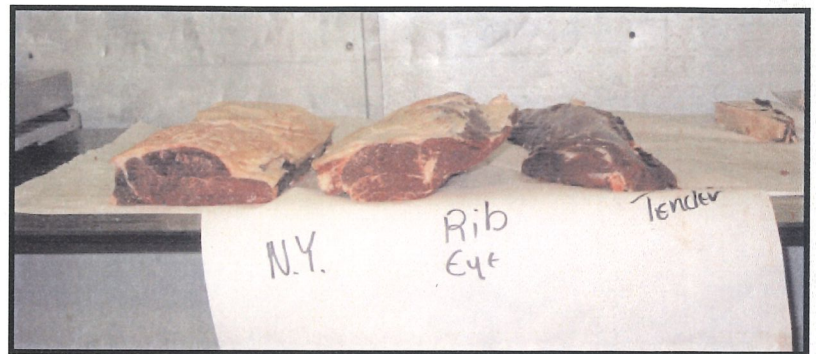
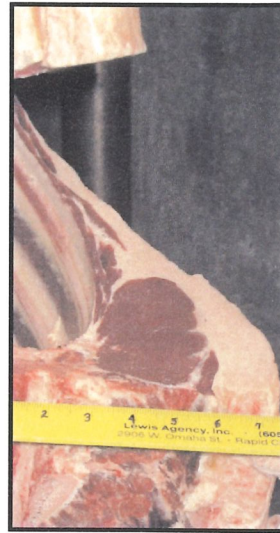
Hot Hanging Weight - 559 pounds

Weaned on November 15, 2004

Weaning Weight - 512 pounds

The first winter, the heifer was fed free-choice grass hay and 5 pounds of corn per day. The following summer, she was in grass pasture with a creep feeder with corn in it. The heifer was on finish feed for 70 days. She was penned and given a ration of free-choice grass hay and a Bison Feedlot pellet.

# 2006 REALITY BASED CARCASS CLASS



CARCASS WEIGHT 559	USDA PER LB. VALUE \$1.58	PER LB. VALUE \$2.38	USDA CARCASS VALUE \$883.22	CARCASS VALUE \$1,330.42
<b>% OF TOTAL VALUE</b>				
<b>MIDDLE BUFFALO VALUE</b> <i>(NY STRIP, TOP SIRLOIN BUTT, TENDERLOIN, RIB-EYE)</i>	\$615.16	\$807.76	69.65%	60.71%
<b>BUFFALO CHUCK VALUE</b> <i>(SHOULDER CLOD, INSIDE CHUCK ROLL, BRISKET)</i>	\$203.18	\$247.73	23.00%	18.62%
<b>BUFFALO ROUND VALUE</b> <i>(PELLED KNUCKLE, TOP ROUND, FLAT, EYE OF ROUND)</i>	\$240.47	\$406.89	27.23%	30.58%
<b>BUFFALO THIN MEATS</b> <i>(TRI-TIP, BALL-TIP, FLANK STEAK, BBQ RIB, SKIRT)</i>	\$43.59	\$67.47	4.94%	5.07%
<b>BUFFALO TRIM 86%</b>	\$379.09	\$452.57	42.92%	34.02%
	<b>TOTAL VALUE</b> \$1,481.49	<b>TOTAL VALUE</b> \$1,982.42	<b>% MARK-UP</b> 167.74%	<b>% MARK-UP</b> 149.01%

WASTE ITEMS	LBS	% CARCASS WEIGHT
FAT & KIDNEY	51.35	9.19%
BONES	85	15.21%

ANIMAL	SEX	YEILD GRADE		HCW	REA	KPH	YGM	YGA	MAT		MARB	LEAN L	FAT B	PH	SHEAR FORCE
	HEIFER	0.76	0.52	559	10.2	2.0	3.7	3.1	LEAN	SKEL	270	33.97	-	-	4.2





Heifer

Final Live Weight At Home - 904 pounds

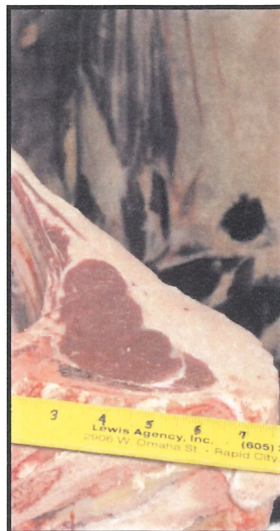
Hot Hanging Weight - 517 pounds

Weaned on December 8, 2004

Weaning Weight - 458 pounds

The heifer was fed both commercial pellet and long hay and kept in a large lot. On April 10, 2005, she was turned out to pasture and on grass for the summer. She was finished for 90 days on a commercial pellet and intermediate long-stem wheat grass.

# 2006 REALITY BASED CARCASS CLASS



CARCASS WEIGHT 517	USDA PER LB. VALUE \$1.58	PER LB. VALUE \$2.38	USDA CARCASS VALUE \$816.86	CARCASS VALUE \$1,230.46
<b>% OF TOTAL VALUE</b>				
<b>MIDDLE BUFFALO VALUE</b> (NY STRIP, TOP SIRLOIN BUTT, TENDERLOIN, RIB-EYE)	\$545.03	\$711.47	66.72%	57.82%
<b>BUFFALO CHUCK VALUE</b> (SHOULDER CLOD, INSIDE CHUCK ROLL, BRISKET)	\$198.41	\$241.98	24.29%	19.67%
<b>BUFFALO ROUND VALUE</b> (PELLED KNUCKLE, TOP ROUND, FLAT, EYE OF ROUND)	\$228.16	\$385.95	27.93%	31.37%
<b>BUFFALO THIN MEATS</b> (TRI-TIP, BALL-TIP, FLANK STEAK, BBQ RIB, SKIRT)	\$32.93	\$50.29	4.03%	4.09%
<b>BUFFALO TRIM 86%</b>	\$333.00	\$406.50	40.77%	33.04%
	<b>TOTAL VALUE</b> \$1,337.53	<b>TOTAL VALUE</b> \$1,796.19	<b>% MARK-UP</b> 163.74%	<b>% MARK-UP</b> 145.98%

WASTE ITEMS	LBS	% CARCASS WEIGHT
FAT & KIDNEY	52.4	10.14%
BONES	82	15.86%

ANIMAL	SEX	YEILD GRADE		HCW	REA	KPH	YGM	YGA	MAT		MARB	LEAN L	FAT B	PH	SHEAR FORCE
	HEIFER	1.04	0.64	517	8.2	2.5	4.9	3.9	LEAN 160	SKEL 150	300	33.40	-	-	6.5



Heifer

Final Live Weight At Home - Approximately 1,160 on trailer in Rapid City

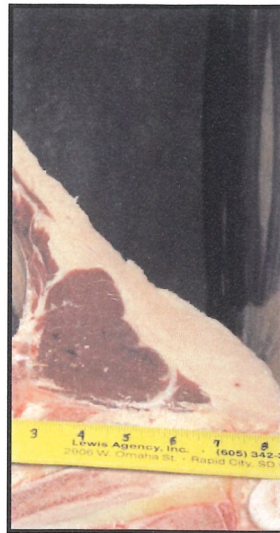
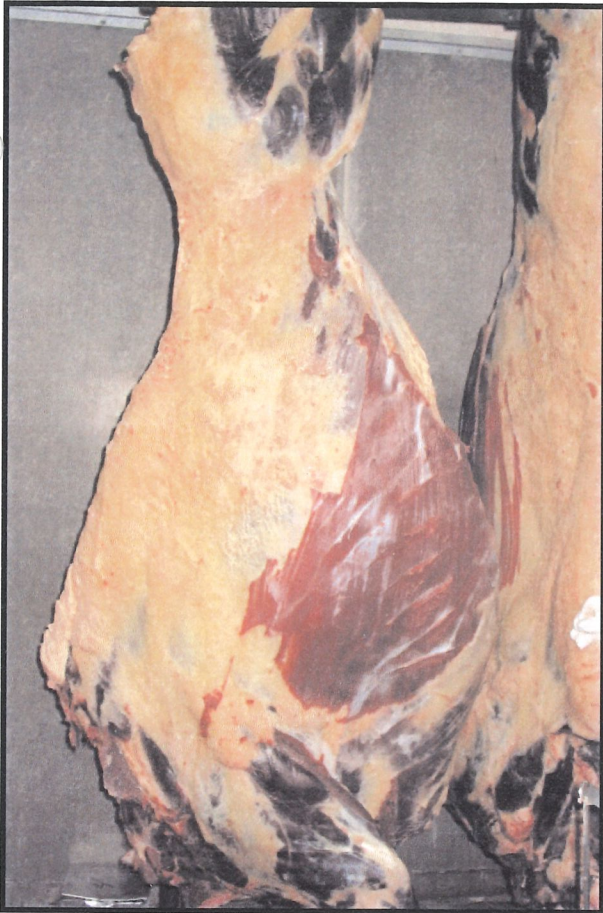
Hot Hanging Weight - 615 pounds

Weaned on December 15, 2004

Weaning Weight - N/A

This heifer was fed hay and corn for the first winter and grass and corn for the first summer. She was finished on a mixture of 2/3 alfalfa and 1/3 crested wheat, corn, distiller's grain and wheat screenings. She was on finish feed for 120 days.

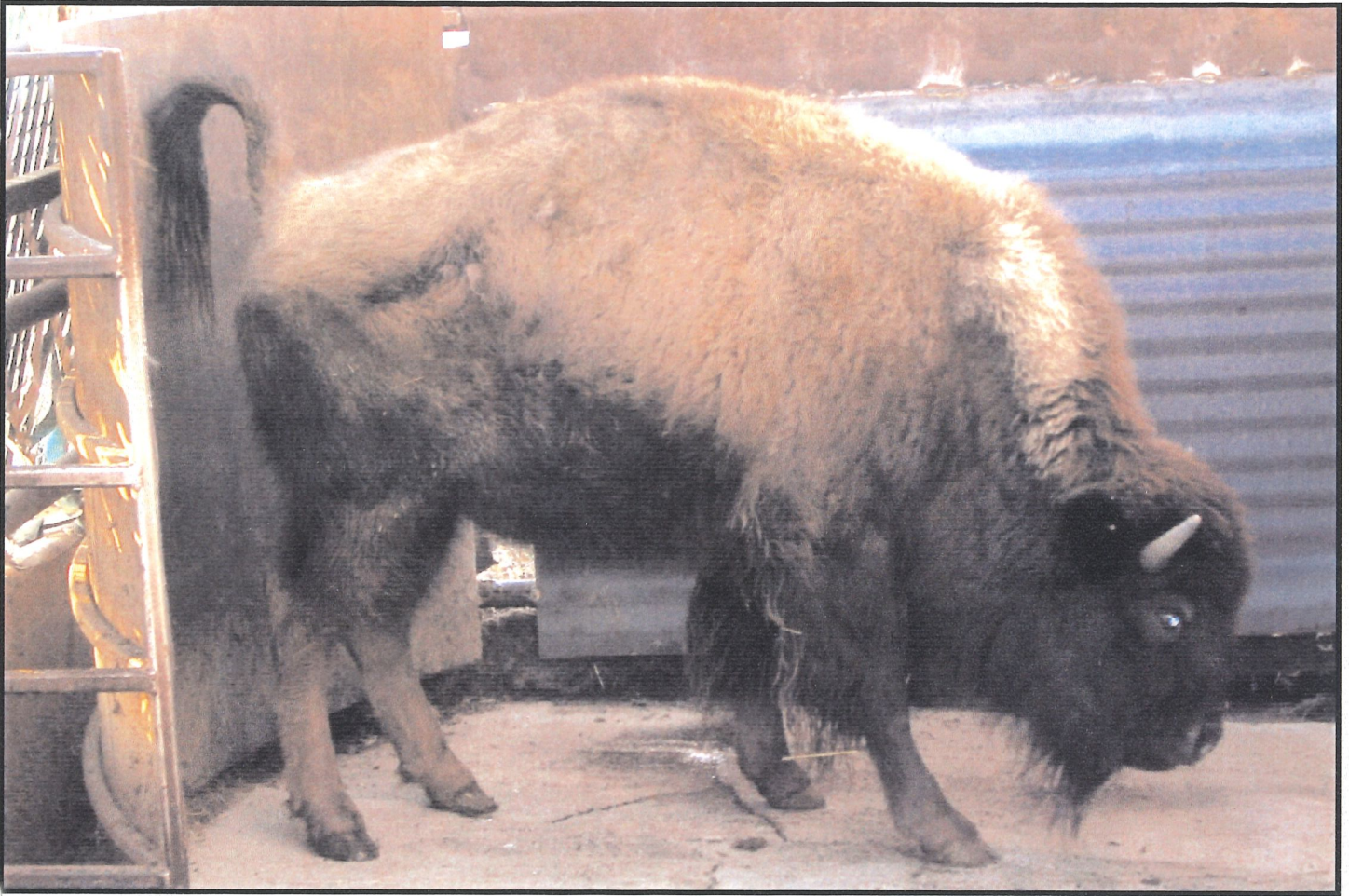
# 2006 REALITY BASED CARCASS CLASS



CARCASS WEIGHT 615	USDA PER LB. VALUE \$1.58	PER LB. VALUE \$2.38	USDA CARCASS VALUE \$971.70	CARCASS VALUE \$1,463.70
<b>% OF TOTAL VALUE</b>				
<b>MIDDLE BUFFALO VALUE</b> <i>(NY STRIP, TOP SIRLOIN BUTT, TENDERLOIN, RIB-EYE)</i>	\$634.19	\$835.48	65.27%	57.08%
<b>BUFFALO CHUCK VALUE</b> <i>(SHOULDER CLOD, INSIDE CHUCK ROLL, BRISKET)</i>	\$256.91	\$313.21	26.44%	21.40%
<b>BUFFALO ROUND VALUE</b> <i>(PELLED KNUCKLE, TOP ROUND, FLAT, EYE OF ROUND)</i>	\$245.96	\$418.33	25.31%	28.58%
<b>BUFFALO THIN MEATS</b> <i>(TRI-TIP, BALL-TIP, FLANK STEAK, BBQ RIB, SKIRT)</i>	\$45.05	\$67.80	4.64%	4.63%
<b>BUFFALO TRIM 87%</b>	\$399.60	\$495.00	41.12%	33.82%
	<b>TOTAL VALUE</b> \$1,581.71	<b>TOTAL VALUE</b> \$2,129.82	<b>% MARK-UP</b> 162.78%	<b>% MARK-UP</b> 145.51%

WASTE ITEMS	LBS	% CARCASS WEIGHT
FAT & KIDNEY	55.1	8.96%
BONES	86	13.98%

ANIMAL	SEX	YEILD GRADE		HCW	REA	KPH	YGM	YGA	MAT		MARB	LEAN L	FAT B	PH	SHEAR FORCE
	HEIFER	1.20	0.88	615	9.5	2.5	5.3	4.5	LEAN 410	SKEL 450	250	30.10	-	-	10.2



#### Heifer

Final Live Weight At Home - 780 pounds on October 29 2005

Hot Hanging Weight - 406 pounds

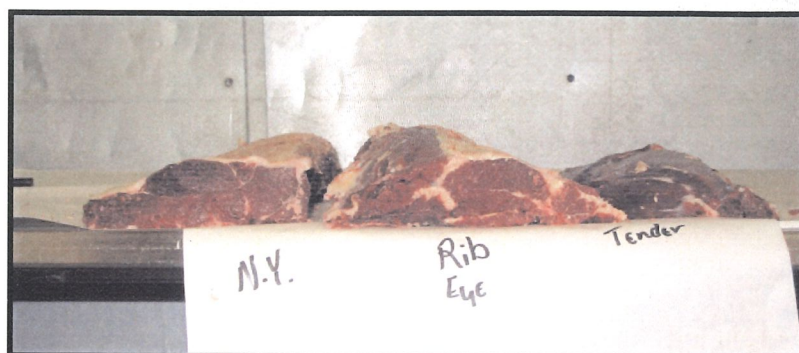
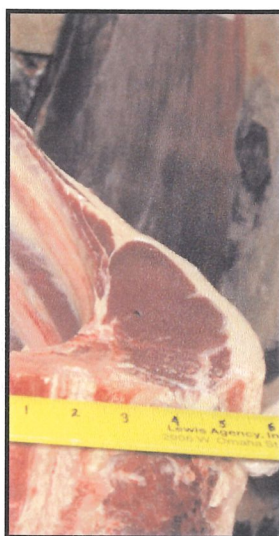
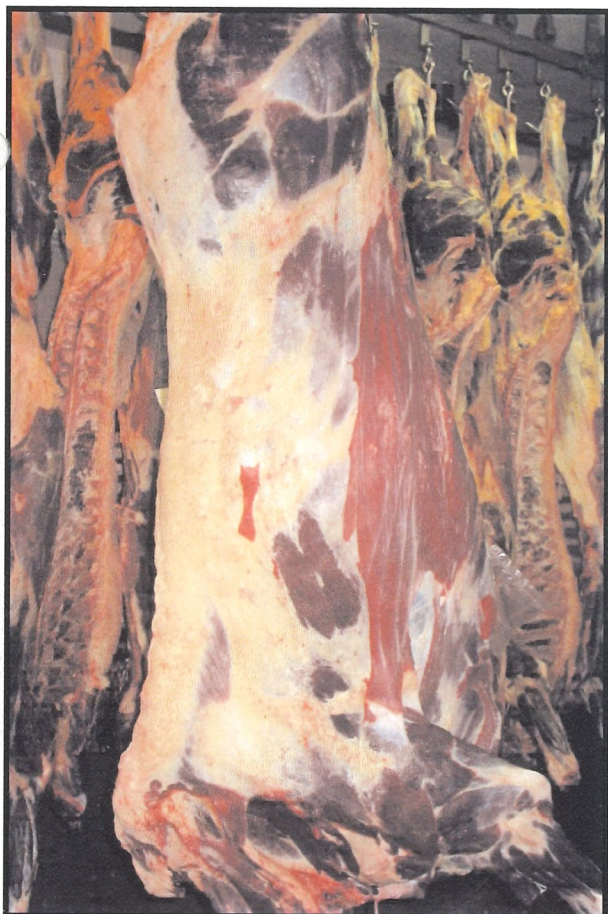
(animal eliminated from contest as it did not meet minimum weight)

Weaned on November 9, 2004

Weaning Weight - 450 pounds

The heifer was fed 50 percent rolled oats with 50 percent cracked corn, free choice hay and mineral the first winter. The animal was fed the same ration the following summer. She had access to free choice hay and mineral. The heifer was not on any type of finishing feed at time of slaughter.

# 2006 REALITY BASED CARCASS CLASS



CARCASS WEIGHT 406	USDA PER LB. VALUE \$1.58	PER LB. VALUE \$2.38	USDA CARCASS VALUE \$640.26	CARCASS VALUE \$966.28
<b>% OF TOTAL VALUE</b>				
<b>MIDDLE BUFFALO VALUE</b> <i>(NY STRIP, TOP SIRLOIN BUTT, TENDERLOIN, RIB-EYE)</i>	\$445.27	\$585.28	69.54%	60.57%
<b>BUFFALO CHUCK VALUE</b> <i>(SHOULDER CLOD, INSIDE CHUCK ROLL, BRISKET)</i>	\$155.14	\$189.48	24.23%	19.61%
<b>BUFFALO ROUND VALUE</b> <i>(PELLED KNUCKLE, TOP ROUND, FLAT, EYE OF ROUND)</i>	\$196.40	\$332.05	30.67%	34.36%
<b>BUFFALO THIN MEATS</b> <i>(TRI-TIP, BALL-TIP, FLANK STEAK, BBQ RIB, SKIRT)</i>	\$29.49	\$44.74	4.61%	4.63%
<b>BUFFALO TRIM 87%</b>	\$277.29	\$321.75	43.31%	33.30%
	<b>TOTAL VALUE</b> \$1,103.59	<b>TOTAL VALUE</b> \$1,473.30	<b>% MARK-UP</b> 172.37%	<b>% MARK-UP</b> 152.47%

WASTE ITEMS	LBS	% CARCASS WEIGHT
FAT & KIDNEY	20.6	5.07%
BONES	77	18.97%

ANIMAL	SEX	YEILD GRADE		HCW	REA	KPH	YGM	YGA	MAT		MARB	LEAN L	FAT B	PH	SHEAR FORCE
	HEIFER	0.20	0.08	406	9.2	2.0	2.0	1.7	LEAN	SKEL	130	31.19	-	-	11.1



### Heifer

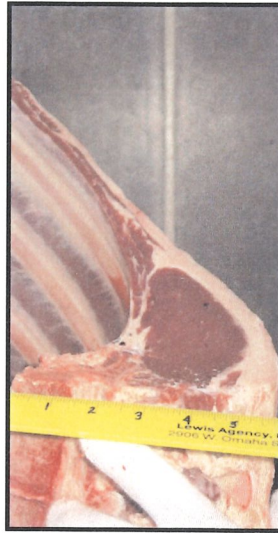
Final Live Weight At Home - 848 pounds on January 8, 2006  
Hot Hanging Weight - 423 pounds  
(animal eliminated from contest as it did not meet minimum weight)

Weaned on January 18, 2005

Weaning Weight - 341 pounds

The first winter the heifer was fed limited amounts (4 pounds) of cracked corn and choice alfalfa and grass. She was fed the same ration the following summer and then put on full feed for 90 days and fed cracked corn, alfalfa and grass.

# 2006 REALITY BASED CARCASS CLASS



CARCASS WEIGHT 423	USDA PER LB. VALUE \$1.58	PER LB. VALUE \$2.38	USDA CARCASS VALUE \$668.34	CARCASS VALUE \$1,006.74
<b>% OF TOTAL VALUE</b>				
<b>MIDDLE BUFFALO VALUE</b> <i>(NY STRIP, TOP SIRLOIN BUTT, TENDERLOIN, RIB-EYE)</i>	\$462.54	\$608.79	69.21%	60.47%
<b>BUFFALO CHUCK VALUE</b> <i>(SHOULDER CLOD, INSIDE CHUCK ROLL, BRISKET)</i>	\$142.16	\$198.91	21.27%	19.76%
<b>BUFFALO ROUND VALUE</b> <i>(PELLED KNUCKLE, TOP ROUND, FLAT, EYE OF ROUND)</i>	\$194.24	\$328.52	29.06%	32.63%
<b>BUFFALO THIN MEATS</b> <i>(TRI-TIP, BALL-TIP, FLANK STEAK, BBQ RIB, SKIRT)</i>	\$31.69	\$48.51	4.74%	4.82%
<b>BUFFALO TRIM 86%</b>	\$275.28	\$336.04	41.19%	33.38%
	<b>TOTAL VALUE</b> \$1,105.91	<b>TOTAL VALUE</b> \$1,520.77	<b>% MARK-UP</b> 165.47%	<b>% MARK-UP</b> 151.06%

WASTE ITEMS	LBS	% CARCASS WEIGHT
FAT & KIDNEY	25.1	5.93%
BONES	76	17.97%

ANIMAL	SEX	YEILD GRADE		HCW	REA	KPH	YGM	YGA	LEAN	MAT	SKEL	MARB	LEAN L	FAT B	PH	SHEAR FORCE
	HEIFER	0.60	0.24	423	8.4	2.0	3.3	2.4	200		140	260	35.07	-	-	9.2