

## DTBA 2002 Reality Based Carcass Class *Program Details*

The Dakota Territory Buffalo Association (DTBA) held the second Reality Based Carcass Class in conjunction with the 2002 Black Hills Buffalo Classic Show and Sale. Last year, the carcass class offered another dimension to the DTBA's already successful live animal show and sale. Through this new class, the association has been able to focus on and give attention to the driving force of the buffalo industry, quality meat production.

Buffalo ranchers produce some of the healthiest, most appetizing red meat in the world and consumers can and will continue to demand this meat product. With that in mind, the DTBA decided to again host a carcass class that will help to educate producers on the economic benefits of taking their bull calves all the way to slaughter weight. Additionally, for the first time ever in the buffalo industry, the DTBA opened up the contest to heifers. With the addition of 10 available spots for heifers, this contest will mark the first time any data has ever been recorded on slaughter heifers. A total of 20 entries were accepted, 10 each of bulls and heifers. Trophies will awarded for the first three places. There will also be a \$5,000 cash prize for the first place carcass in the bulls and another \$5,000 cash award for the highest placing female carcass.

The success of last year's contest was partly due to the unique nature of it. About a year and a half ago, Buffalo, SD producer, Sandy Limpert, approached Bruce Anderson of RC Western Meats in Rapid City, SD. What Limpert was suggesting was to do a carcass contest, but with a different twist. He wanted to have the contest winner determined based on the retail value of the meat the animal was able to put in the box. This is an idea that Limpert has been kicking around for a number of years and has been fine-tuning the details. Having been told it couldn't be done, that just spurred him on to find a way to do it. When he approached Anderson, Anderson was intrigued with the idea and also, being a large regional bison meat purveyor, wanted to know the results for his own personal experience. After much discussion and lots of fine tuning, the Dakota Territory Buffalo Association (DTBA) was the official host of the new Reality-Based Carcass Class.

The contest idea is simple. After the animals are delivered and a live weight obtained, they are then slaughtered. A hot hanging weight is recorded. After hanging in the cooler for a set amount of time, the carcasses are halved and then quartered. Under the watchful eye of an independent party, in this case, Dr. Robert Maddock of South Dakota State University, the meat is trimmed to a quarter inch of fat cover. All the fat that was trimmed off is weighed. Each cut is then weighed with a consistent, current value per pound put on them. The remaining bones, minus the trimmed off meat, are also weighed. A sample of burger from each carcass is cooked and the fat content measured. Anderson has developed a sliding scale in which to base value of the burger on its percentage of lean meat, meaning the leaner the meat, the more it was worth per pound.

Upon the completion of the contest, a sheet is made for each entry. It contains data such as the carcass weight, the carcass value, the middle value, the chuck value, the round value, the thin meats value and the trim. It also contains the waste items, including the fat and kidney and the bones. The winner is determined by the highest percentage of growth from the carcass value to the retail value.

So, what is accomplished by this reality-based contest? Limpert hopes that the data recorded and provided to the producers will help them understand their feeding program and how it affects the final product. From Anderson's point of view, it helps producers know what kind of animal will make the packer and the producer the most money. Over time, the records kept from this type of contest will help producers make genetic and production decisions that will help their yields and produce an efficient product. When the data from the first contest was released to the public, there were many calls to the association noting that this industry first had done it's job in generating the beginning of a new database for buffalo meat producers.

Producers who entered the contest this year were asked to provide as much background data as possible on their animal, including genetic history, growth progress, feeding program, traveling information, nearly anything that might be recordable. Once again, photographs of the live animals were taken and photographs were taken throughout the entire process to record each entry and help producers and consumers to better understand the value of the meat they produce and consume.



Consignors entered in the 2006 Reality Based Carcass Class

BH - Blue Valley Ranch, manager Perry Handyside, Kremmling, CO  
BH - Beaver Creek Buffalo Co., Brad Beavers, Jefferson, SD  
BH - Gehl's Buffalo Hill Ranch, Mark & Kathy Gehl, Prescott, WI  
BH - Diamond Tail Ranch, Scott Butcher, mgr, Jelm, WY  
BH - Mosquito Park Enterprises, Rod Sather, Vivian, SD  
B - Colorado Bison Co. at Hay Draw Ranch, Merle & Susan Maass, Union Center, SD  
BH - Quarter Circle Y Co. - Monty Hepper, Mobridge, SD  
B - Slim Buttes Buffalo Ranch, Sandy & Jacki Limpert, Buffalo, SD  
B - Slim Buttes Buffalo Ranch, Brodie Limpert, Buffalo, SD

Placings

**Bulls:**

- 1. Skull Creek Bison, Wayne & LeAnn Buchholz, Rhame, ND**
- 2. Quarter Circle Y Co., Monty & Tammy Hepper, Mobridge, SD**
- 3. Slim Buttes Buffalo Ranch, Brodie Limpert, Buffalo, SD**

**Heifers:**

- 1. Diamond Tail Ranch, Scott Butcher, mgr. Jelm, WY**
- 2. Mosquito Park Enterprises, Rod Sather, Vivian, SD**
- 3. Blue Valley Ranch, Perry Handyside, mgr. Tim Robertson, Livestock Foreman, Kremmling, Co.**

2006

Animal	Sex	Yield Grade		HCW	REA	KPH	YGM	YGA	MAT			Lean L	Fat B	pH	Shear Force
		MFAT	AFAT						LEAN	SKEL	MARB				
1	Bull	0.32	0.16	537	8.7	2.0	3.0	2.6	190	210	280	34.11			11.7
3	Bull	0.56	0.44	550	9.0	2.0	3.5	3.2	160	150	250	32.97			11.0
5	Bull	0.56	0.36	620	10.4	2.5	3.4	2.9	140	160	290	35.35			5.7
7	Bull	0.28	0.16	541	10.8	2.0	2.2	1.9	190	190	280	33.54			11.3
8	Bull	0.60	0.52	599	10.5	2.0	3.3	3.1	160	170	310	34.17			9.2
9	Bull	0.76	0.56	586	11.2	2.0	3.4	2.9	190	170	290	34.33			10.5
11	Bull	0.52	0.32	611	11.0	2.0	3.0	2.5	140	150	310	33.96			9.0
12	Bull	0.60	0.40	593	8.6	2.0	3.9	3.4	190	190	290	34.40			8.6
15	Bull	0.52	0.32	570	9.2	2.0	3.4	2.9	200	190	240	33.87			10.1
16	Bull	0.12	0.08	696	10.3	2.0	2.5	2.4	240	330	230	33.15			11.5
2	Heifer	0.20	0.08	406	9.2	2.0	2.0	1.7	190	180	130	31.19			11.1
4	Heifer	0.76	0.52	559	10.2	2.0	3.7	3.1	190	280	270	33.97			4.2
6	Heifer	0.88	0.60	502	8.2	2.5	4.5	3.8	170	150	260	34.41			7.0
10	Heifer	1.04	0.64	517	8.2	2.5	4.9	3.9	160	150	300	33.40			6.5
13	Heifer	0.92	0.56	447	9.2	2.0	4.0	3.1	150	220	290	33.83			11.5
14	Heifer	0.60	0.24	423	8.4	2.0	3.3	2.4	200	140	260	35.07			9.2
17	Heifer	1.20	0.88	615	9.5	2.5	5.3	4.5	410	450	250	30.10			10.2
Average		0.61	0.40	551	9.6	2.1	3.5	3.0	192	205	266	33.64			9.3
Bull Avg		0.50	0.35	596	10.1	2.1	3.2	2.8	179	189	277	33.97			9.7
Heifer Avg		0.80	0.50	496	9.0	2.2	4.0	3.2	210	224	251	33.14			8.5
Beef Average		0.48	0.49	787	13.1	2.3	2.9	3.0	165	167	423	39.5	14.3	5.50	8.0

Consignors entered in the 2006 Reality Based Carcass Class

BH - Blue Valley Ranch, manager Perry Handyside, Kremmling, CO  
BH - Beaver Creek Buffalo Co., Brad Beavers, Jefferson, SD  
BH - Gehl's Buffalo Hill Ranch, Mark & Kathy Gehl, Prescott, WI  
BH - Diamond Tail Ranch, Scott Butcher, mgr, Jelm, WY  
BH - Mosquito Park Enterprises, Rod Sather, Vivian, SD  
B - Colorado Bison Co. at Hay Draw Ranch, Merle & Susan Maass, Union Center, SD  
BH - Quarter Circle Y Co. - Monty Hepper, Mobridge, SD  
B - Slim Buttes Buffalo Ranch, Sandy & Jacki Limpert, Buffalo, SD  
B - Slim Buttes Buffalo Ranch, Brodie Limpert, Buffalo, SD

Placings

**Bulls:**

1. Skull Creek Bison, Wayne & LeAnn Buchholz, Rhame, ND
2. Quarter Circle Y Co., Monty & Tammy Hepper, Mobridge, SD
3. Slim Buttes Buffalo Ranch, Brodie Limpert, Buffalo, SD
4. Colorado Bison Co., Merle & Susan Maass
5. Diamond Tail Ranch, Scott Butcher
6. Slim Buttes Buffalo Ranch, Sandy Limpert
7. Beaver Creek Buffalo Co., Brad Beavers
8. Blue Valley Ranch
9. Mosquito Park Enterprises - DQ - did not make weight
10. Gehl's Buffalo Hill Ranch - DQ - did not make weight

**Heifers:**

1. Diamond Tail Ranch, Scott Butcher, mgr. Jelm, WY
2. Mosquito Park Enterprises, Rod Sather, Vivian, SD
3. Blue Valley Ranch, Perry Handyside, mgr. Tim Robertson, Livestock Foreman, Kremmling, Co.
4. Skull Creek Bison, Wayne & LeAnn Buchholz
5. Quarter Circle Y Co., Monty & Tammy Hepper
6. Gehl's Buffalo Hill Ranch - DQ - did not make weight
7. Beaver Creek Buffalo Co., Brad Beavers - DQ - did not make weight



Analysis of the Meat Industry as it Relates to the Reality-Based Carcass Class  
By Bruce Anderson

The meat industry is an ever-changing business, driven by an ever-changing consumer. We are now in the midst of another huge change in the meat business as it pertains to buffalo. As you watch the price of buffalo change you may feel that it is driven by an across the board change in meat prices. In fact it is being driven by consumer's demand for lean ground buffalo meat. (This is why heifers are lagging so far behind bulls.) Buffalo trim price has more than doubled while steak cuts are up from 20-30%. In the past around 50% of a buffalo carcass ended up in some form of ground product. Now another 25% of the buffalo is ending up being ground. The relative leanness of the chuck and round cuts make them prime product for grinding. With these items going to feed the nationwide explosion for ground buffalo that leaves only a handful of steak cuts to support the rest of the carcass value. In past contests we used the same meat price figures from the late 90's. These prices were a result of more importance being placed on individual meat cuts carrying a larger value. Today's pricing reflects prices that will consistently turn inventory and make buffalo meat attractive in the marketplace. In an effort to keep up with these changes I have changed the contest so that there are two sets of figures derived from each buffalo. The winner will continue to be judged as it was before, but we are going to see if the lean value of each carcass would make it superior in today's market. Sandy Limpert, the DTBA officials, and I will continue to assess the market, and we will do our best to keep this contest pertinent to the evolving buffalo meat business. If you have any questions I would be glad to do my best to answer them.



Bull

Final Live Weight At Home - 1,130 pounds

Hot Hanging Weight - 611 pounds

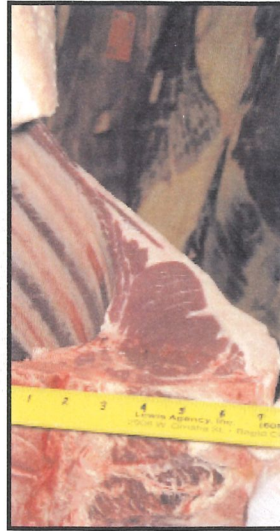
Weaned on December 8, 2004

Weaning Weight - 512 pounds

The bull was fed both commercial pellet and long hay and kept in a large lot. On April 10, 2005, the bull was turned out to pasture and on grass for the summer. He was finished for 114 days on a commercial pellet and intermediate long-stem wheat grass.



OOPS!  
Camera Operator Error



# 2006 REALITY BASED CARCASS CLASS



CARCASS WEIGHT 611	USDA PER LB. VALUE \$1.72	PER LB. VALUE \$2.38	USDA CARCASS VALUE \$1,050.92	CARCASS VALUE \$1,454.18
% OF TOTAL VALUE				
<b>MIDDLE BUFFALO VALUE</b> (NY STRIP, TOP SIRLOIN BUTT, TENDERLOIN, RIB-EYE)	\$695.38	\$909.66	66.17%	62.55%
<b>BUFFALO CHUCK VALUE</b> (SHOULDER CLOD, INSIDE CHUCK ROLL, BRISKET)	\$240.85	\$292.10	22.92%	20.09%
<b>BUFFALO ROUND VALUE</b> (PELLED KNUCKLE, TOP ROUND, FLAT, EYE OF ROUND)	\$271.15	\$457.80	25.80%	31.48%
<b>BUFFALO THIN MEATS</b> (TRI-TIP, BALL-TIP, FLANK STEAK, BBQ RIB, SKIRT)	\$48.46	\$73.72	4.61%	5.07%
<b>BUFFALO TRIM 85%</b>	\$383.72	\$479.65	36.51%	32.98%
	<b>TOTAL VALUE</b> \$1,639.56	<b>TOTAL VALUE</b> \$2,212.93	<b>% MARK-UP</b> 156.01%	<b>% MARK-UP</b> 152.18%

WASTE ITEMS	LBS	% CARCASS WEIGHT
FAT & KIDNEY	41.0	6.72%
BONES	104	17.02%

ANIMAL	SEX	YEILD GRADE		HCW	REA	KPH	YGM	YGA	MAT		MARB	LEAN L	FAT B	PH	SHEAR FORCE
	BULL	0.52	0.32	611	11.0	2.0	3.0	2.5	LEAN	SKEL	310	33.96	-	-	9.0





Bull

Final Live Weight At Home - Approximately 1,160 on trailer in Rapid City  
Hot Hanging Weight - 696 pounds

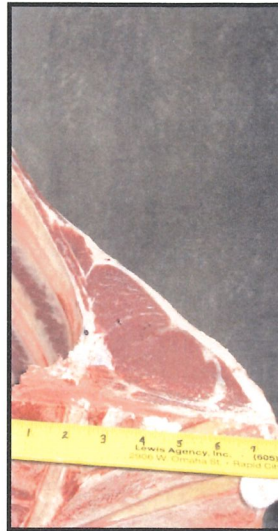
Weaned on December 15, 2004

Weaning Weight - unknown

The bull was on feed from weaning to finish. He was fed a ration of  $\frac{2}{3}$  alfalfa,  $\frac{1}{3}$  crested wheat, corn, distiller's grain and wheat screenings. He was on finish feed for 120 days.



# 2006 REALITY BASED CARCASS CLASS



CARCASS WEIGHT 696	USDA PER LB. VALUE \$1.72	PER LB. VALUE \$2.38	USDA CARCASS VALUE \$1,197.12	CARCASS VALUE \$1,656.48
<b>% OF TOTAL VALUE</b>				
<b>MIDDLE BUFFALO VALUE</b> (NY STRIP, TOP SIRLOIN BUTT, TENDERLOIN, RIB-EYE)	\$714.57	\$934.09	59.69%	56.39%
<b>BUFFALO CHUCK VALUE</b> (SHOULDER CLOD, INSIDE CHUCK ROLL, BRISKET)	\$295.46	\$361.31	24.68%	21.81%
<b>BUFFALO ROUND VALUE</b> (PELLED KNUCKLE, TOP ROUND, FLAT, EYE OF ROUND)	\$318.53	\$536.57	26.61%	32.39%
<b>BUFFALO THIN MEATS</b> (TRI-TIP, BALL-TIP, FLANK STEAK, BBQ RIB, SKIRT)	\$48.67	\$74.00	4.07%	4.47%
<b>BUFFALO TRIM 87%</b>	\$502.44	\$583.00	41.97%	35.20%
	<b>TOTAL VALUE</b> \$1,879.67	<b>TOTAL VALUE</b> \$2,488.97	<b>% MARK-UP</b> 157.02%	<b>% MARK-UP</b> 150.26%

WASTE ITEMS	LBS	% CARCASS WEIGHT
FAT & KIDNEY	32.45	4.66%
BONES	128	18.39%

ANIMAL	SEX	YEILD GRADE		HCW	REA	KPH	YGM	YGA	LEAN	MAT SKEL	MARB	LEAN L	FAT B	PH	SHEAR FORCE
	BULL	0.12	0.08	696	10.3	2.0	2.5	2.4	240	330	230	33.15	-	-	11.5





Bull

Final Live Weight At Home 1,190 pounds

Hot Hanging Weight - 586 pounds

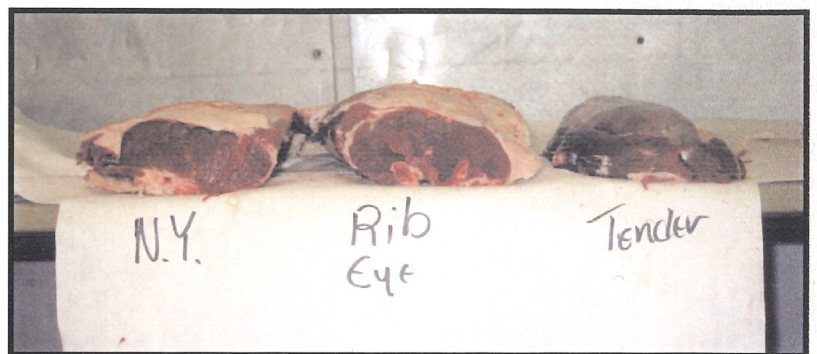
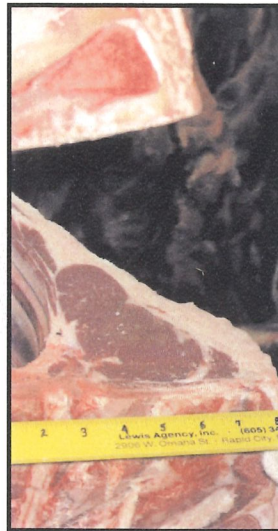
Weaned on December 13, 2004

Weaning Weight - 466 pounds

The bull was fed limited wheat and corn pellets and free choice grass hay for the first winter. He was on grass pasture only for the following summer. He was put on a free choice wheat and corn pellet and grass hay for finishing and was on the feed for 130 days.



# 2006 REALITY BASED CARCASS CLASS



CARCASS WEIGHT	586	USDA PER LB. VALUE	\$1.72	PER LB. VALUE	\$2.38	USDA CARCASS VALUE	\$1,007.92	CARCASS VALUE	\$1,394.68
% OF TOTAL VALUE									
<b>MIDDLE BUFFALO VALUE</b> <i>(NY STRIP, TOP SIRLOIN BUTT, TENDERLOIN, RIB-EYE)</i>		\$661.29		\$863.96		65.61%		61.95%	
<b>BUFFALO CHUCK VALUE</b> <i>(SHOULDER CLOD, INSIDE CHUCK ROLL, BRISKET)</i>		\$235.35		\$286.93		23.35%		20.57%	
<b>BUFFALO ROUND VALUE</b> <i>(PELLED KNUCKLE, TOP ROUND, FLAT, EYE OF ROUND)</i>		\$240.46		\$406.35		23.86%		29.14%	
<b>BUFFALO THIN MEATS</b> <i>(TRI-TIP, BALL-TIP, FLANK STEAK, BBQ RIB, SKIRT)</i>		\$38.11		\$57.20		3.78%		4.10%	
<b>BUFFALO TRIM</b> 86%		\$394.98		\$475.02		39.19%		34.06%	
		<b>TOTAL VALUE</b>	\$1,570.19	<b>TOTAL VALUE</b>	\$2,089.46	<b>% MARK-UP</b>	155.79%	<b>% MARK-UP</b>	149.82%

WASTE ITEMS	LBS	% CARCASS WEIGHT
FAT & KIDNEY	42.65	7.28%
BONES	101	17.24%

ANIMAL	SEX	YEILD GRADE		HCW	REA	KPH	YGM	YGA	LEAN	MAT SKEL	MARB	LEAN L	FAT B	PH	SHEAR FORCE
	BULL	0.76	0.56	586	11.2	2.0	3.4	2.9	190	170	290	34.33	-	-	10.5





Bull

Final Live Weight At Home - 1,031 pounds

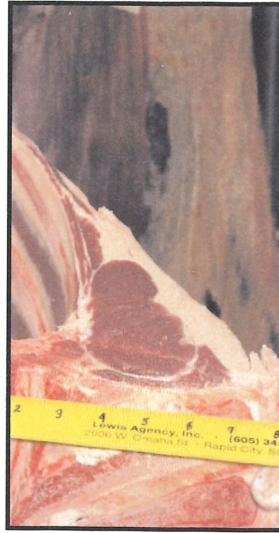
Hot Hanging Weight - 550 pounds

Weaned on October 28, 2004

Weaning Weight - N/A

The bull was fed grass hay, grass/alfalfa hay, millet hay and oat hay the first winter. He was fed the same hay and was on pasture the following summer. He was finished for 60 days on the above forage in addition to 2/3 oats and 1/3 corn fed free choice.





# 2006 REALITY BASED CARCASS CLASS



CARCASS WEIGHT 550	USDA PER LB. VALUE	PER LB. VALUE	USDA CARCASS VALUE	CARCASS VALUE
	\$1.72	\$2.38	\$946.00	\$1,309.00
<b>% OF TOTAL VALUE</b>				
<b>MIDDLE BUFFALO VALUE</b> <i>(NY STRIP, TOP SIRLOIN BUTT, TENDERLOIN, RIB-EYE)</i>	\$631.82	\$823.40	66.79%	62.90%
<b>BUFFALO CHUCK VALUE</b> <i>(SHOULDER CLOD, INSIDE CHUCK ROLL, BRISKET)</i>	\$197.00	\$240.62	20.82%	18.38%
<b>BUFFALO ROUND VALUE</b> <i>(PELLED KNUCKLE, TOP ROUND, FLAT, EYE OF ROUND)</i>	\$240.64	\$406.59	25.44%	31.06%
<b>BUFFALO THIN MEATS</b> <i>(TRI-TIP, BALL-TIP, FLANK STEAK, BBQ RIB, SKIRT)</i>	\$40.64	\$60.94	4.30%	4.66%
<b>BUFFALO TRIM 86%</b>	\$354.12	\$425.88	37.43%	32.53%
	<b>TOTAL VALUE</b>	<b>TOTAL VALUE</b>	<b>% MARK-UP</b>	<b>% MARK-UP</b>
	\$1,464.22	\$1,957.43	154.78%	149.54%

WASTE ITEMS	LBS	% CARCASS WEIGHT
FAT & KIDNEY	48.55	8.83%
BONES	100	18.18%

ANIMAL	SEX	YEILD GRADE		HCW	REA	KPH	YGM	YGA	LEAN	MAT	SKEL	MARB	LEAN L	FAT B	PH	SHEAR FORCE
	BULL	0.56	0.44	550	9.0	2.0	3.5	3.2	160		150	250	32.97	-	-	11.0





Bull

Final Live Weight At Home - 1,050 pounds

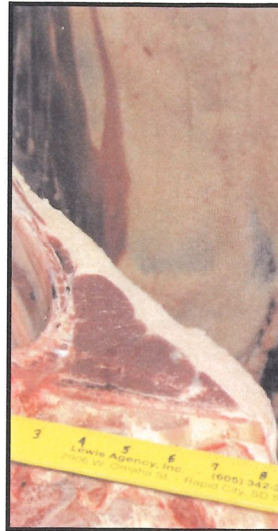
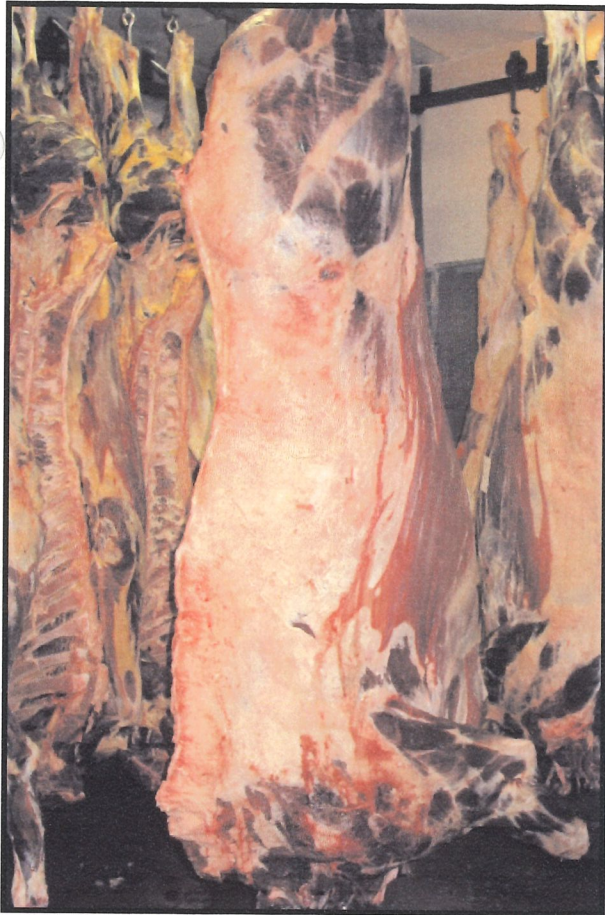
Hot Hanging Weight - 573 pounds

Weaned on November 15, 2004

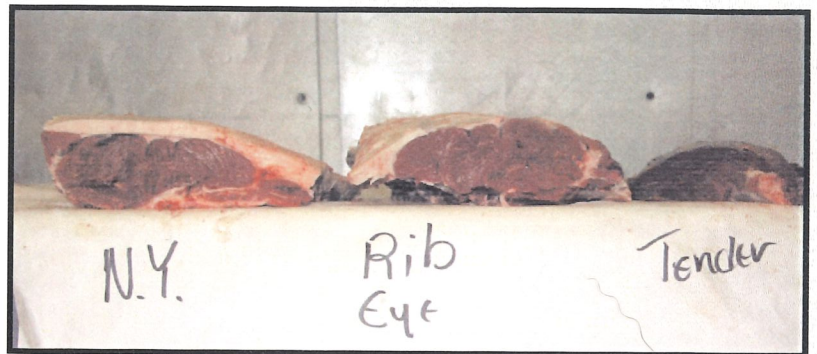
Weaning Weight - 400 pounds

The bull was fed a mixture of two pounds grass hay and one pound 14% range cake for the first winter and grass hay and the 14% cake for the first summer. He was finished on the same ration in addition to feeding a grain-screened pellet. The bull was on finish feed for 180 days.





# 2006 REALITY BASED CARCASS CLASS



CARCASS WEIGHT 573	USDA PER LB. VALUE \$1.72	PER LB. VALUE \$2.38	USDA CARCASS VALUE \$985.56	CARCASS VALUE \$1,363.74
<b>% OF TOTAL VALUE</b>				
<b>MIDDLE BUFFALO VALUE</b> (NY STRIP, TOP SIRLOIN BUTT, TENDERLOIN, RIB-EYE)	\$615.87	\$803.53	62.49%	58.92%
<b>BUFFALO CHUCK VALUE</b> (SHOULDER CLOD, INSIDE CHUCK ROLL, BRISKET)	\$224.39	\$274.05	22.77%	20.10%
<b>BUFFALO ROUND VALUE</b> (PELLED KNUCKLE, TOP ROUND, FLAT, EYE OF ROUND)	\$240.84	\$406.89	24.44%	29.84%
<b>BUFFALO THIN MEATS</b> (TRI-TIP, BALL-TIP, FLANK STEAK, BBQ RIB, SKIRT)	\$42.85	\$64.78	4.35%	4.75%
<b>BUFFALO TRIM 86%</b>	\$381.36	\$458.64	38.69%	33.63%
	<b>TOTAL VALUE</b> \$1,505.31	<b>TOTAL VALUE</b> \$2,007.89	<b>% MARK-UP</b> 152.47%	<b>% MARK-UP</b> 147.23%

WASTE ITEMS	LBS	% CARCASS WEIGHT
FAT & KIDNEY	43.2	7.54%
BONES	107	18.67%

ANIMAL	SEX	YEILD GRADE		HCW	REA	KPH	YGM	YGA	LEAN	MAT	SKEL	MARB	LEAN L	FAT B	PH	SHEAR FORCE
	BULL	0.60	0.40	573	8.6	2.0	3.9	3.4	190		190	290	34.40	-	-	8.6





Bull

Final Live Weight At Home - 1,130 pounds

Hot Hanging Weight - 594 pounds

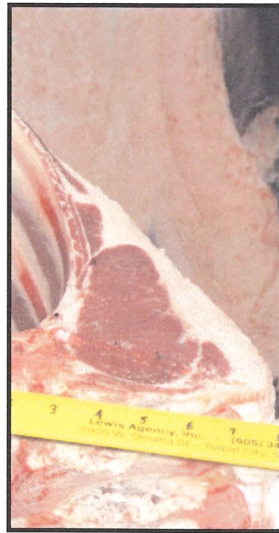
Weaned on December 13, 2004

Weaning Weight - 366 pounds

The bull was fed limited wheat and corn pellets and free choice grass hay for the first winter. He was on grass pasture only for the following summer. He was put on a free choice wheat and corn pellet and grass hay for finishing and was on the feed for 130 days.



# 2006 REALITY BASED CARCASS CLASS



CARCASS WEIGHT 594	USDA PER LB. VALUE \$1.72	PER LB. VALUE \$2.38	USDA CARCASS VALUE \$1,021.68	CARCASS VALUE \$1,413.72
<b>% OF TOTAL VALUE</b>				
<b>MIDDLE BUFFALO VALUE</b> (NY STRIP, TOP SIRLOIN BUTT, TENDERLOIN, RIB-EYE)	\$629.45	\$820.14	61.61%	58.01%
<b>BUFFALO CHUCK VALUE</b> (SHOULDER CLOD, INSIDE CHUCK ROLL, BRISKET)	\$225.38	\$273.46	22.06%	19.34%
<b>BUFFALO ROUND VALUE</b> (PELLED KNUCKLE, TOP ROUND, FLAT, EYE OF ROUND)	\$257.94	\$435.56	25.25%	30.81%
<b>BUFFALO THIN MEATS</b> (TRI-TIP, BALL-TIP, FLANK STEAK, BBQ RIB, SKIRT)	\$40.27	\$60.35	3.94%	4.27%
<b>BUFFALO TRIM 86%</b>	\$399.60	\$487.80	39.11%	34.50%
	<b>TOTAL VALUE</b> \$1,552.64	<b>TOTAL VALUE</b> \$2,077.31	<b>% MARK-UP</b> 151.97%	<b>% MARK-UP</b> 146.94%

WASTE ITEMS	LBS	% CARCASS WEIGHT
FAT & KIDNEY	44.6	7.51%
BONES	122	20.54%

ANIMAL	SEX	YEILD GRADE		HCW	REA	KPH	YGM	YGA	LEAN	MAT	SKEL	MARB	LEAN L	FAT B	PH	SHEAR FORCE
	BULL	0.60	0.52	594	10.5	2.0	3.3	3.1	160		170	310	34.17	-	-	9.2





Bull

Final Live Weight At Home - 1,151 pounds

Hot Hanging Weight - 570 pounds

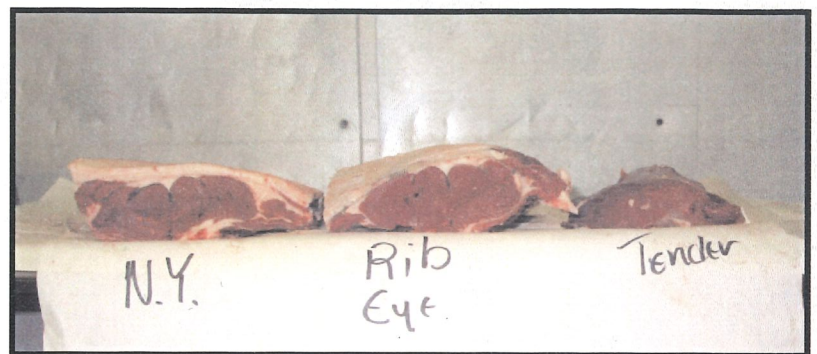
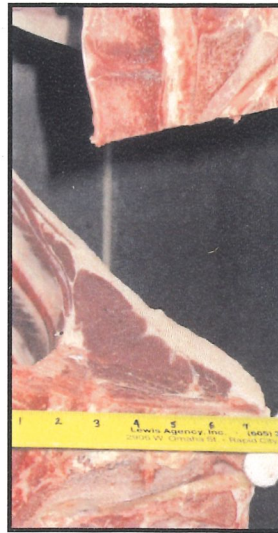
Weaned on December 15, 2004

Weaning Weight - 368 pounds

The first winter the bull was fed limited amounts (4 pounds) of cracked corn and choice alfalfa and grass. He was fed the same ration the following summer. He was put on full feed for 90 days and fed cracked corn, alfalfa and grass.



# 2006 REALITY BASED CARCASS CLASS



CARCASS WEIGHT 570	USDA PER LB. VALUE	PER LB. VALUE	USDA CARCASS VALUE	CARCASS VALUE
	\$1.72	\$2.38	\$980.40	\$1,356.60
% OF TOTAL VALUE				
<b>MIDDLE BUFFALO VALUE</b> (NY STRIP, TOP SIRLOIN BUTT, TENDERLOIN, RIB-EYE)	\$589.04	\$765.21	60.08%	56.41%
<b>BUFFALO CHUCK VALUE</b> (SHOULDER CLOD, INSIDE CHUCK ROLL, BRISKET)	\$219.28	\$266.94	22.37%	19.68%
<b>BUFFALO ROUND VALUE</b> (PELLED KNUCKLE, TOP ROUND, FLAT, EYE OF ROUND)	\$235.65	\$398.05	24.04%	29.34%
<b>BUFFALO THIN MEATS</b> (TRI-TIP, BALL-TIP, FLANK STEAK, BBQ RIB, SKIRT)	38.34	\$59.26	3.91%	4.37%
<b>BUFFALO TRIM 85%</b>	\$364.56	\$453.60	37.18%	33.44%
	<b>TOTAL VALUE</b>	<b>TOTAL VALUE</b>	<b>% MARK-UP</b>	<b>% MARK-UP</b>
	\$1,446.87	\$1,943.06	147.58%	143.23%

WASTE ITEMS	LBS	% CARCASS WEIGHT
FAT & KIDNEY	44.5	7.81%
BONES	110	19.30%

ANIMAL	SEX	YEILD GRADE		HCW	REA	KPH	YGM	YGA	MAT		MARB	LEAN L	FAT B	PH	SHEAR FORCE
	BULL	0.52	0.328	570	9.2	2.0	3.4	2.9	LEAN 200	SKEL 190	240	33.87	-	-	10.1





## Bull

Final Live Weight At Home - 1,262 pounds

Hot Hanging Weight - 620 pounds

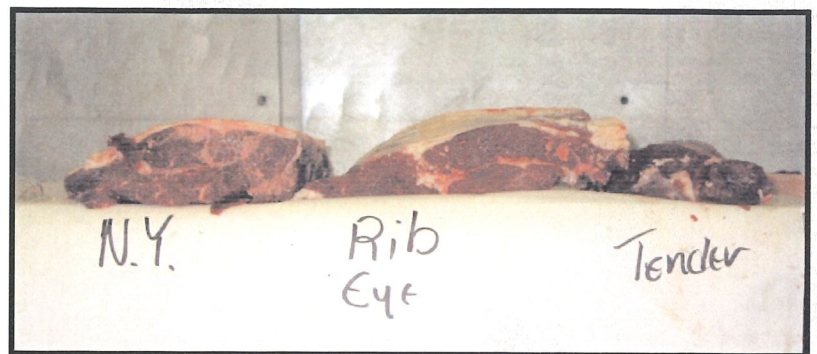
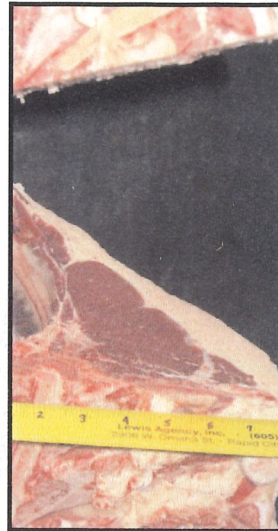
Weaned on November 15, 2004

Weaning Weight - 540 pounds

The first winter, the bull was fed free-choice grass hay and 5 pounds of corn per day. The following summer, the bull was in grass pasture with a creep feeder with corn in it. The bull was on finish feed for 70 days. He was penned and given a ration of free-choice grass hay and a Bison Feedlot pellet.



# 2006 REALITY BASED CARCASS CLASS



CARCASS WEIGHT 620	USDA PER LB. VALUE \$1.72	PER LB. VALUE \$2.38	USDA CARCASS VALUE \$1,066.40	CARCASS VALUE \$1,475.60
<b>% OF TOTAL VALUE</b>				
<b>MIDDLE BUFFALO VALUE</b> (NY STRIP, TOP SIRLOIN BUTT, TENDERLOIN, RIB-EYE)	\$652/.42	\$848.43	61.18%	57.50%
<b>BUFFALO CHUCK VALUE</b> (SHOULDER CLOD, INSIDE CHUCK ROLL, BRISKET)	\$245.02	\$298.03	22.98%	20.20%
<b>BUFFALO ROUND VALUE</b> (PELLED KNUCKLE, TOP ROUND, FLAT, EYE OF ROUND)	\$247.54	\$418.17	23.21%	28.34%
<b>BUFFALO THIN MEATS</b> (TRI-TIP, BALL-TIP, FLANK STEAK, BBQ RIB, SKIRT)	\$68.30	\$68.30	6.40%	4.63%
<b>BUFFALO TRIM 86%</b>	\$304.98	\$475.02	37.04%	32.19%
	<b>TOTAL VALUE</b> \$1,608.26	<b>TOTAL VALUE</b> \$2,107.95	<b>% MARK-UP</b> 150.81%	<b>% MARK-UP</b> 142.85%

WASTE ITEMS	LBS	% CARCASS WEIGHT
FAT & KIDNEY	48.6	7.84%
BONES	104	16.77%

ANIMAL	SEX	YEILD GRADE		HCW	REA	KPH	YGM	YGA	LEAN	MAT	SKEL	MARB	LEAN L	FAT B	PH	SHEAR FORCE
	BULL	0.56	0.36	620	10.4	2.5	3.4	2.9	40		160	290	35.35	-	-	5.7