

DTBA 2002 Reality Based Carcass Class *Program Details*

The Dakota Territory Buffalo Association (DTBA) held the second Reality Based Carcass Class in conjunction with the 2002 Black Hills Buffalo Classic Show and Sale. Last year, the carcass class offered another dimension to the DTBA's already successful live animal show and sale. Through this new class, the association has been able to focus on and give attention to the driving force of the buffalo industry, quality meat production.

Buffalo ranchers produce some of the healthiest, most appetizing red meat in the world and consumers can and will continue to demand this meat product. With that in mind, the DTBA decided to again host a carcass class that will help to educate producers on the economic benefits of taking their bull calves all the way to slaughter weight. Additionally, for the first time ever in the buffalo industry, the DTBA opened up the contest to heifers. With the addition of 10 available spots for heifers, this contest will mark the first time any data has ever been recorded on slaughter heifers. A total of 20 entries were accepted, 10 each of bulls and heifers. Trophies will awarded for the first three places. There will also be a \$5,000 cash prize for the first place carcass in the bulls and another \$5,000 cash award for the highest placing female carcass.

The success of last year's contest was partly due to the unique nature of it. About a year and a half ago, Buffalo, SD producer, Sandy Limpert, approached Bruce Anderson of RC Western Meats in Rapid City, SD. What Limpert was suggesting was to do a carcass contest, but with a different twist. He wanted to have the contest winner determined based on the retail value of the meat the animal was able to put in the box. This is an idea that Limpert has been kicking around for a number of years and has been fine-tuning the details. Having been told it couldn't be done, that just spurred him on to find a way to do it. When he approached Anderson, Anderson was intrigued with the idea and also, being a large regional bison meat purveyor, wanted to know the results for his own personal experience. After much discussion and lots of fine tuning, the Dakota Territory Buffalo Association (DTBA) was the official host of the new Reality-Based Carcass Class.

The contest idea is simple. After the animals are delivered and a live weight obtained, they are then slaughtered. A hot hanging weight is recorded. After hanging in the cooler for a set amount of time, the carcasses are halved and then quartered. Under the watchful eye of an independent party, in this case, Dr. Robert Maddock of South Dakota State University, the meat is trimmed to a quarter inch of fat cover. All the fat that was trimmed off is weighed. Each cut is then weighed with a consistent, current value per pound put on them. The remaining bones, minus the trimmed off meat, are also weighed. A sample of burger from each carcass is cooked and the fat content measured. Anderson has developed a sliding scale in which to base value of the burger on its percentage of lean meat, meaning the leaner the meat, the more it was worth per pound.

Upon the completion of the contest, a sheet is made for each entry. It contains data such as the carcass weight, the carcass value, the middle value, the chuck value, the round value, the thin meats value and the trim. It also contains the waste items, including the fat and kidney and the bones. The winner is determined by the highest percentage of growth from the carcass value to the retail value.

So, what is accomplished by this reality-based contest? Limpert hopes that the data recorded and provided to the producers will help them understand their feeding program and how it affects the final product. From Anderson's point of view, it helps producers know what kind of animal will make the packer and the producer the most money. Over time, the records kept from this type of contest will help producers make genetic and production decisions that will help their yields and produce an efficient product. When the data from the first contest was released to the public, there were many calls to the association noting that this industry first had done its job in generating the beginning of a new database for buffalo meat producers.

Producers who entered the contest this year were asked to provide as much background data as possible on their animal, including genetic history, growth progress, feeding program, traveling information, nearly anything that might be recordable. Once again, photographs of the live animals were taken and photographs were taken throughout the entire process to record each entry and help producers and consumers to better understand the value of the meat they produce and consume.

Consignors entered in the 2005 Reality Based Carcass Class

Blue Valley Ranch, manager Perry Handyside, Kremmling, CO
Beaver Creek Buffalo Co., Brad Beavers, Jefferson, SD
Prairie Rose Buffalo Ranch, Heath Peterson, Reville, SD
Expedition Buffalo Company, Perry & Susan Handyside, Kremmling, CO
Indian Springs Bison, Roy & Cheryl Krivoruchka, Belfield, ND
Gehl's Buffalo Hill Ranch, Mark & Kathy Gehl, Prescott, WI
Diamond Tail Ranch, Scott Butcher, mgr, Jelm, WY
Mosquito Park Enterprises, Rod Sather, Vivian, SD
Colorado Bison Co. at Hay Draw Ranch, Merle & Susan Maass, Union Center, SD
Double S Buffalo Company, Steve Schmitz & Dave Staum, Elk Point, SD
High Point Bison, Glen & Jill Klawonn, Pine Bluffs, WY
Poudre Basin Buffalo Company, Boy & Allison Meyer, Windsor, CO

BULLS

1st - Gehl's Buffalo Hill Ranch, Mark & Kathy Gehl, Prescott, WI
2nd - Prairie Rose Buffalo Ranch, Heath Peterson, Reville, SD
3rd - Blue Valley Ranch, manager Perry Handyside, Kremmling, CO

HEIFERS

1st - Gehl's Buffalo Hill Ranch, Mark & Kathy Gehl, Prescott, WI
2nd - Diamond Tail Ranch, Scott Butcher, mgr, Jelm, WY
3rd - High Point Bison, Glen & Jill Klawonn, Pine Bluffs, WY

2005

Animal	Sex	Yield Grade		HCW	REA	KPH	YGM	YGA	LEAN	MAT		Lean L	Fat B	pH	Shear Force	
		MFAT	AFAT							SKEL	MARB					
1	Bull	0.16	0.08	568	11.3	1.5	1.7	1.5	250	240	160	32.78	.	5.50	9.3	4.23
3	Bull	0.40	0.20	633	9.1	1.5	3.3	2.8	330	180	120	33.26	.	5.53	7.9	3.58
4	Bull	0.36	0.28	662	10.2	1.0	2.9	2.7	310	140	130	33.13	.	5.58	6.6	3.00
5	Bull	0.40	0.24	674	10.1	2.0	3.2	2.8	280	160	180	33.35	.	5.48	7.5	3.43
7	Bull	0.36	0.28	630	10.0	1.5	2.9	2.7	330	150	170	34.36	.	5.44	5.5	2.50
8	Bull	0.36	0.24	594	9.8	2.0	2.9	2.6	320	140	120	31.93	.	5.77	15.7	7.15
10	Bull	0.32	0.24	569	10.8	1.5	2.3	2.1	340	170	170	33.76	.	5.45	6.4	2.93
11	Bull	0.36	0.28	646	12.0	1.5	2.3	2.1	280	160	180	35.39	.	5.40	7.2	3.28
12	Bull	0.56	0.40	602	11.4	2.0	2.9	2.5	290	180	280	34.35	.	5.45	6.7	3.05
15	Bull	0.12	0.08	673	11.4	1.0	1.9	1.8	330	170	150	33.48	.	5.37	5.1	2.30
2	Hfr	0.36	0.20	485	8.0	2.0	3.1	2.7	220	130	340	39.07	.	5.61	8.9	4.06
6	Hfr	1.08	0.64	572	9.2	2.0	4.8	3.7	310	190	220	33.94	.	5.48	4.5	2.05
9	Hfr	0.80	0.56	482	7.9	2.0	4.2	3.6	280	170	260	35.49	.	5.44	5.0	2.25
13	Hfr	0.68	0.48	593	10.4	1.0	3.3	2.8	340	420	280	33.56	.	5.46	6.1	2.78
14	Hfr	0.80	0.44	530	9.1	2.0	4.0	3.1	280	170	120	34.86	.	5.42	7.2	3.26
16	Hfr	1.00	0.60	536	9.0	1.5	4.5	3.5	410	480	270	34.79	.	5.42	4.5	2.03
Average		0.51	0.33	591	10.0	1.6	3.1	2.7	306	203	197	34.22		5.49	7.1	
Bull Avg		0.34	0.23	625	10.6	1.6	2.6	2.4	306	169	166	33.58		5.50	7.8	
Heifer Avg		0.79	0.49	533	8.9	1.8	4.0	3.2	307	260	248	35.29		5.47	6.0	
Beef Average		0.48	0.49	787	13.1	2.3	2.9	3.0	165	167	423	39.5		5.50	8.0	

Welcome

IF YOU PRINT, REPRINT, PRESENT, COPY, USE COLOR, TYPESET, DESIGN, DESKTOP PUBLISH, ADVERTISE,



DAKOTA TERRITORY BUFFALO ASSOCIATION

P.O. Box 4104 Rapid City, SD 57709

HAND OUT BUSINESS CARDS, BULLETIN, CREATE, CORRESPOND, OR COMMUNICATE ON PAPER...CALL US!

2005 DTBA Carcass Class Placings

Bulls

- 1. Blue tag # 225 - Gehl 568 lbs
- 2. Orange # 6 - Heath Peterson 594 lbs
- 3. Black # 331 - Blue Valley Ranch 630 lbs
- 4. Yellow # 387 - Diamond Tail 673 lbs.
- 5. Yellow # 54 - Beavers 646 lbs.
- 6. Purple 3619 - Sather 633 lbs
- 7. White 301 - Maass 674 lbs
- 8. 17 - Schmitz 569 lbs
- 9. No Tag - Kirchikova 662 lbs

Heifers

- 1. White # 52 - Gehl 485 lbs
- 2. Yellow # 72 - Diamond Tail 536 lbs
- 3. Yellow # 200 - Klawonn 543 lbs
- 4. Red # 328 - Boyd Meyer 530 lbs
- 5. Orange 306 - Heath Peterson 482 lbs
- 6. Black 365 - Blue Valley 572 lbs



THE PRINT SHOP

401 Main Street • Rapid City, SD 57701-2731
605-342-COPY (2679) • FAX 605-342-1857
www.littleprint.com

If you've got a minute...we can print it!

PROMOTE, EXHIBIT, MAIL, SELL, DISPLAY, DISTRIBUTE, STUFF ENVELOPES

ANNOUNCE, INVITE, TRANSMIT, WRITE, EDIT, PROOF, TRAIN, INSTRUCT, ADVISE, INVOICE, BRIEF, POST, ISSUE, REISSUE, CALCULATE, INFORM, STICK-ON, REPORT, PLACARD,



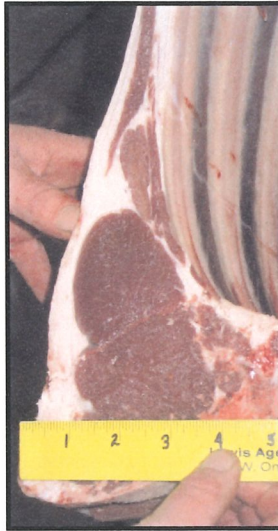
Bull

Final Live Weight At Home - 1,240 pounds
Live Weight At Western Buffalo Company - n/a
Hot Hanging Weight - 662 pounds

Weaned on November 24, 2003

Weaning Weight - 425 pounds

This bull was fed cracked corn and upland dry hay for the first winter and first summer. He was finished for 100 days on cracked corn, mineral and dry upland hay. Hay quality was poor. The bull's mother weighs approximately 1,000 pounds.



2005 REALITY BASED CARCASS CLASS



LIVE BUFFALO WEIGHT	CARCASS WEIGHT	PER LB. VALUE	CARCASS VALUE	
	662	\$2.38	\$1,575.56	
				% OF TOTAL VALUE
MIDDLE BUFFALO VALUE (NY STRIP, TOP SIRLOIN BUTT, TENDERLOIN, RIB-EYE)		\$850.24		53.96%
BUFFALO CHUCK VALUE (SHOULDER CLOD, INSIDE CHUCK ROLL, BRISKET)		\$276.99		17.58%
BUFFALO ROUND VALUE (PELLED KNUCKLE, TOP ROUND, FLAT, EYE OF ROUND)		\$475.32		30.17%
BUFFALO THIN MEATS (TRI-TIP, BALL-TIP, FLANK STEAK, BBQ RIB, SKIRT)		\$77.40		4.91%
BUFFALO TRIM 87%		\$522.50		33.16%
		TOTAL VALUE		% MARK-UP
		\$2,202.45		139.79%

WASTE ITEMS	LBS	% CARCASS WEIGHT
FAT & KIDNEY	53.55	8.09%
BONES	115	17.37%

LENGTH (SANDY RATIO)	LENGTH:WEIGHT RATIO
ROUND CIRCUMFERENCE	ROUND CIRCUMFERENCE:WEIGHT RATIO
HUMP DEPTH	HUMP:WEIGHT RATIO

RBCCA																
ANIMAL	SEX	YEILD GRADE		HCW	REA	KPH	YGM	YGA	MAT			LEAN	FAT	PH	SHEAR	
	BULL	MFAT	AFAT						LEAN	SKEL	MARB	L	B		FORCE	
		0.36	0.28	662	10.2	1.0	2.9	2.7	310	140	130	33.13	-	5.58	6.6	

2005 REALITY BASED CARCASS CLASS

LIVE BUFFALO WEIGHT	CARCASS WEIGHT 628	PER LB. VALUE \$2.38	CARCASS VALUE \$1,494.64
			% OF TOTAL VALUE
MIDDLE BUFFALO VALUE <i>(NY STRIP, TOP SIRLOIN BUTT, TENDERLOIN, RIB-EYE)</i>		\$826.99	55.33%
BUFFALO CHUCK VALUE <i>(SHOULDER CLOD, INSIDE CHUCK ROLL, BRISKET)</i>		\$278.82	18.65%
BUFFALO ROUND VALUE <i>(PELLED KNUCKLE, TOP ROUND, FLAT, EYE OF ROUND)</i>		\$459.23	30.73%
BUFFALO THIN MEATS <i>(TRI-TIP, BALL-TIP, FLANK STEAK, BBQ RIB, SKIRT)</i>		\$74.53	4.99%
BUFFALO TRIM 88%		\$521.40	34.88%
		TOTAL VALUE \$2,160.97	% MARK-UP 144.58%

WASTE ITEMS	LBS	% CARCASS WEIGHT
FAT & KIDNEY	42.62	6.79%
BONES	109	17.36%

LENGTH <i>(SANDY RATIO)</i>	LENGTH:WEIGHT RATIO
ROUND CIRCUMFERENCE	ROUND CIRCUMFERENCE:WEIGHT RATIO
HUMP DEPTH	HUMP:WEIGHT RATIO

ANIMAL	SEX	YEILD	GRADE	HCW	REA	KPH	YGM	YGA	LEAN	MAT	SKEL	MARB	LEAN	FAT	PH	SHEAR
	BULL	MFAT	AFAT										L	B		FORCE
		0.34	0.23	625	10.6	1.6	2.6	2.4	306		169	166	33.58	-	5.50	7.8

RBCCA



Heifer

Final Live Weight At Home - 875 pounds

Live Weight At Western Buffalo Company - n/a

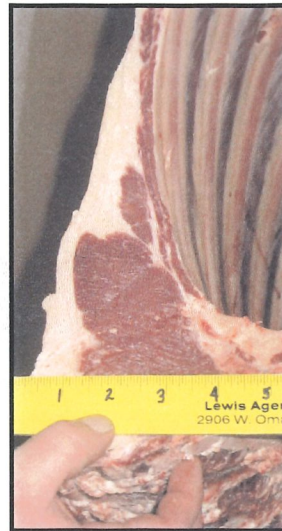
Hot Hanging Weight -485 pounds

Weaned in n/a

Weaning Weight - n/a

This heifer was finished on a mixture of 50% ground cob corn and 50% oats with grass available.

2005 REALITY BASED CARCASS CLASS



LIVE BUFFALO WEIGHT	CARCASS WEIGHT	PER LB. VALUE	CARCASS VALUE
	485	\$2.38	\$1,154.30
			% OF TOTAL VALUE
MIDDLE BUFFALO VALUE (NY STRIP, TOP SIRLOIN BUTT, TENDERLOIN, RIB-EYE)		\$662.85	57.42%
BUFFALO CHUCK VALUE (SHOULDER CLOD, INSIDE CHUCK ROLL, BRISKET)		\$216.23	18.73%
BUFFALO ROUND VALUE (PELLED KNUCKLE, TOP ROUND, FLAT, EYE OF ROUND)		\$358.73	31.08%
BUFFALO THIN MEATS (TRI-TIP, BALL-TIP, FLANK STEAK, BBQ RIB, SKIRT)		\$74.52	6.46%
BUFFALO TRIM 85%		\$387.53	33.57%
		TOTAL VALUE	% MARK-UP
		\$1,699.86	147.26%

WASTE ITEMS	LBS	% CARCASS WEIGHT
FAT & KIDNEY	43.2	8.91%
BONES	80	16.49%

LENGTH (SANDY RATIO)	LENGTH:WEIGHT RATIO
ROUND CIRCUMFERENCE	ROUND CIRCUMFERENCE:WEIGHT RATIO
HUMP DEPTH	HUMP:WEIGHT RATIO

ANIMAL	SEX	YEILD	GRADE	HCW	REA	KPH	YGM	YGA	LEAN	MAT	MARB	LEAN	FAT	PH	SHEAR
	HFR	0.36	0.20	485	8.0	2.0	3.1	2.7	220	130	340	39.07	-	5.61	8.9

RBCCA



Heifer

Final Live Weight At Home - 900 pounds

Live Weight At Western Buffalo Company - n/a

Hot Hanging Weight - 536 pounds

Weaned in November of 2003

Weaning Weight - 384 pounds

This heifer was on grass hay for the first winter and grass and a 14 percent cake the first summer. She was finished in a feedlot for 90 days on a grass hay and 14 percent pellet.

2005 REALITY BASED CARCASS CLASS



LIVE BUFFALO WEIGHT	CARCASS WEIGHT	PER LB. VALUE	CARCASS VALUE
	536	\$2.38	\$1,275.68
			% OF TOTAL VALUE
MIDDLE BUFFALO VALUE (NY STRIP, TOP SIRLOIN BUTT, TENDERLOIN, RIB-EYE)		\$734.31	57.56%
BUFFALO CHUCK VALUE (SHOULDER CLOD, INSIDE CHUCK ROLL, BRISKET)		\$234.82	18.41%
BUFFALO ROUND VALUE (PELLED KNUCKLE, TOP ROUND, FLAT, EYE OF ROUND)		\$372.56	29.20%
BUFFALO THIN MEATS (TRI-TIP, BALL-TIP, FLANK STEAK, BBQ RIB, SKIRT)		\$61.21	4.80%
BUFFALO TRIM 86%		\$432.92	33.94%
		TOTAL VALUE	% MARK-UP
		\$1,835.82	143.91%

WASTE ITEMS	LBS	% CARCASS WEIGHT
FAT & KIDNEY	66.2	12.35%
BONES	85	15.86%

LENGTH (SANDY RATIO)	LENGTH:WEIGHT RATIO
ROUND CIRCUMFERENCE	ROUND CIRCUMFERENCE:WEIGHT RATIO
HUMP DEPTH	HUMP:WEIGHT RATIO

ANIMAL	SEX	YEILD	GRADE	HCW	REA	KPH	YGM	YGA	LEAN	MAT	SKEL	MARB	LEAN	FAT	PH	SHEAR
	HFR	1.00	AFAT 0.60	536	9.0	1.4/5	4.5	3.5	410	480	270	34.79	L	B -	5.42	4.5



Heifer

Final Live Weight At Home - 1,040 pounds

Live Weight At Western Buffalo Company - n/a

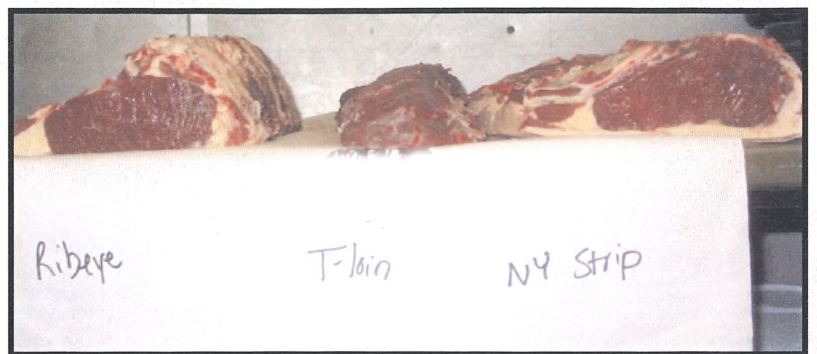
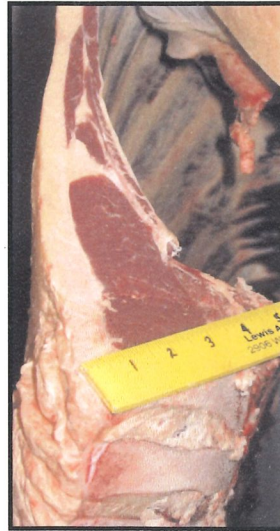
Hot Hanging Weight - 593 pounds

Weaned on - calf was not weaned

Weaning Weight - n/a

This heifer was pastured for the first winter and the first summer. She was put into a feedlot and fed a finishing ration of alfalfa and corn for 75 days.

2005 REALITY BASED CARCASS CLASS



LIVE BUFFALO WEIGHT	CARCASS WEIGHT	PER LB. VALUE	CARCASS VALUE
	593	\$2.38	\$1,411.34
			% OF TOTAL VALUE
MIDDLE BUFFALO VALUE (NY STRIP, TOP SIRLOIN BUTT, TENDERLOIN, RIB-EYE)		\$792.50	56.15%
BUFFALO CHUCK VALUE (SHOULDER CLOD, INSIDE CHUCK ROLL, BRISKET)		\$265.70	18.83%
BUFFALO ROUND VALUE (PELLED KNUCKLE, TOP ROUND, FLAT, EYE OF ROUND)		\$435.24	30.84%
BUFFALO THIN MEATS (TRI-TIP, BALL-TIP, FLANK STEAK, BBQ RIB, SKIRT)		\$76.00	5.38%
BUFFALO TRIM 86%		\$442.26	31.34%
		TOTAL VALUE	% MARK-UP
		\$2,011.70	142.54%

WASTE ITEMS	LBS	% CARCASS WEIGHT
FAT & KIDNEY	69	11.64%
BONES	83	14.00%

LENGTH (SANDY RATIO)	LENGTH:WEIGHT RATIO
ROUND CIRCUMFERENCE	ROUND CIRCUMFERENCE:WEIGHT RATIO
HUMP DEPTH	HUMP:WEIGHT RATIO

ANIMAL	SEX	YEILD	GRADE	HCW	REA	KPH	YGM	YGA	LEAN	MAT	SKEL	MARB	LEAN	FAT	PH	SHEAR
	HFR	MFAT	AFAT										L	B		FORCE
		0.68	0.48	593	10.4	1.0	3.3	2.8	340	420	280	33.56	-	5.46	6.1	



Heifer

Final Live Weight At Home - 960 pounds

Live Weight At Western Buffalo Company - n/a

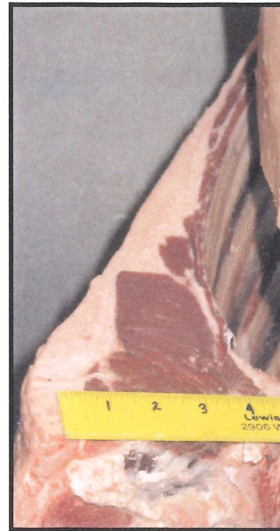
Hot Hanging Weight - 530 pounds

Weaned in November of 2003

Weaning Weight - n/a

This heifer was fed hay silage for the first winter and first summer. She was finished on a mixture of flaked corn, silage, hay, alfalfa and brewer's grain. She was on this feed for 30 days.

2005 REALITY BASED CARCASS CLASS



LIVE BUFFALO WEIGHT	CARCASS WEIGHT	PER LB. VALUE	CARCASS VALUE
	530	\$2.38	\$1,261.40
			% OF TOTAL VALUE
MIDDLE BUFFALO VALUE (NY STRIP, TOP SIRLOIN BUTT, TENDERLOIN, RIB-EYE)		\$701.41	55.61%
BUFFALO CHUCK VALUE (SHOULDER CLOD, INSIDE CHUCK ROLL, BRISKET)		\$233.21	18.49%
BUFFALO ROUND VALUE (PELLED KNUCKLE, TOP ROUND, FLAT, EYE OF ROUND)		\$379.56	30.09%
BUFFALO THIN MEATS (TRI-TIP, BALL-TIP, FLANK STEAK, BBQ RIB, SKIRT)		\$49.30	3.91%
BUFFALO TRIM 86%		\$412.23	32.68%
		TOTAL VALUE	% MARK-UP
		\$1,775.71	140.77%

WASTE ITEMS	LBS	% CARCASS WEIGHT
FAT & KIDNEY	60.05	11.33%
BONES	84	15.85%

LENGTH (SANDY RATIO)	LENGTH:WEIGHT RATIO
ROUND CIRCUMFERENCE	ROUND CIRCUMFERENCE:WEIGHT RATIO
HUMP DEPTH	HUMP:WEIGHT RATIO

ANIMAL	SEX	YEILD	GRADE	HCW	REA	KPH	YGM	YGA	LEAN	MAT	MARB	LEAN	FAT	PH	SHEAR
	HFR	0.80	0.44	530	9.1	2.0	4.0	3.1	280	SKEL	120	L	B	5.42	FORCE
										170		34.86	-		7.2

RBCCA



Heifer

Final Live Weight At Home - 852 pounds

Live Weight At Western Buffalo Company - n/a

Hot Hanging Weight - 482 pounds

Weaned on January 15, 2004

Weaning Weight - 306 pounds

The first winter, the heifer was fed free choice hay and creep feed with 100 pounds DDG and 100 pounds corn and 1,800 pounds screenings. The first summer she was fed the same until July, when she was put on hay only. She was in a dry lot to finish with free choice hay and a mixture of 500 pounds corn, 250 pounds DDG, 1,200 pounds screenings and 50 pounds mineral. She was finished for 150 days.

2005 REALITY BASED CARCASS CLASS



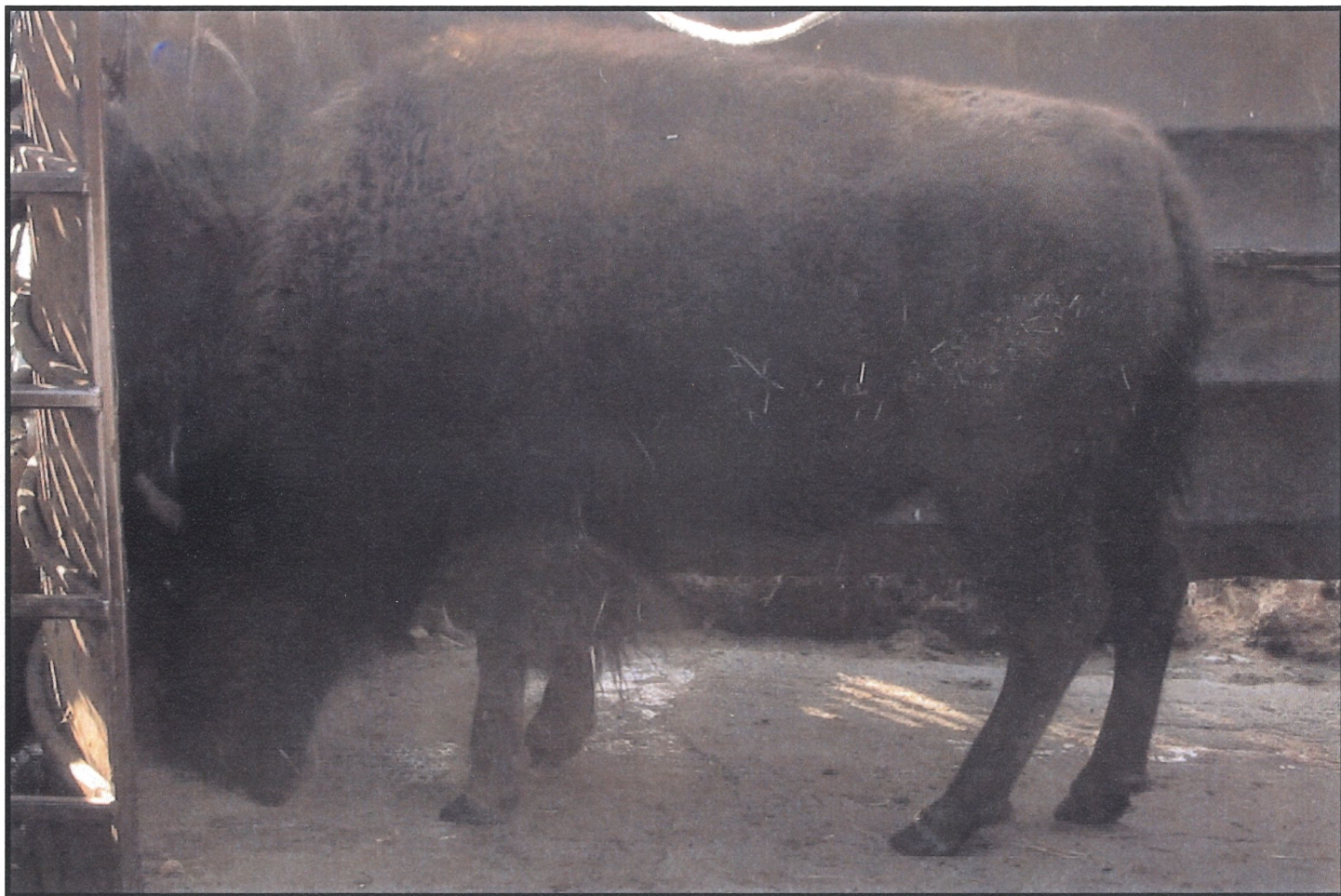
LIVE BUFFALO WEIGHT	CARCASS WEIGHT	PER LB. VALUE	CARCASS VALUE
	482	\$2.38	\$1,147.16
			% OF TOTAL VALUE
MIDDLE BUFFALO VALUE (NY STRIP, TOP SIRLOIN BUTT, TENDERLOIN, RIB-EYE)		\$599.26	52.24%
BUFFALO CHUCK VALUE (SHOULDER CLOD, INSIDE CHUCK ROLL, BRISKET)		\$197.16	17.19%
BUFFALO ROUND VALUE (PELLED KNUCKLE, TOP ROUND, FLAT, EYE OF ROUND)		\$354.68	30.92%
BUFFALO THIN MEATS (TRI-TIP, BALL-TIP, FLANK STEAK, BBQ RIB, SKIRT)		\$61.31	5.34%
BUFFALO TRIM 88%		\$380.86	33.20%
		TOTAL VALUE	% MARK-UP
		\$1,593.27	138.89%

WASTE ITEMS	LBS	% CARCASS WEIGHT
FAT & KIDNEY	54.75	11.36%
BONES	74	15.35%

LENGTH (SANDY RATIO)	LENGTH:WEIGHT RATIO
ROUND CIRCUMFERENCE	ROUND CIRCUMFERENCE:WEIGHT RATIO
HUMP DEPTH	HUMP:WEIGHT RATIO

ANIMAL	SEX	YEILD	GRADE	HCW	REA	KPH	YGM	YGA	LEAN	MAT	MARB	LEAN	FAT	PH	SHEAR
	HFR	0.80	.56	482	7.9	2.0	4.2	3.6	280	SKEL	260	35.49	B	5.44	FORCE
										170			-		5.0

FBCCA



Heifer

Final Live Weight At Home - 978 pounds

Live Weight At Western Buffalo Company - n/a

Hot Hanging Weight - 572 pounds

Weaned on November 15, 2003

Weaning Weight - 506 pounds

The heifer was fed five pounds per day of corn and free choice grass/hay the first winter. The first summer, she was fed on grass pasture with a creep feeder containing bison feedlot pellets. The heifer was finished for 100 days in a lot with free choice grass hay and bison feedlot pellet. The heifer's mother weighed 1,290 pounds.

2005 REALITY BASED CARCASS CLASS



LIVE BUFFALO WEIGHT	CARCASS WEIGHT	PER LB. VALUE	CARCASS VALUE
	572	\$2.38	\$1,361.36
			% OF TOTAL VALUE
MIDDLE BUFFALO VALUE <i>(NY STRIP, TOP SIRLOIN BUTT, TENDERLOIN, RIB-EYE)</i>		\$687.74	50.52%
BUFFALO CHUCK VALUE <i>(SHOULDER CLOD, INSIDE CHUCK ROLL, BRISKET)</i>		\$243.05	17.85%
BUFFALO ROUND VALUE <i>(PELLED KNUCKLE, TOP ROUND, FLAT, EYE OF ROUND)</i>		\$400.11	29.39%
BUFFALO THIN MEATS <i>(TRI-TIP, BALL-TIP, FLANK STEAK, BBQ RIB, SKIRT)</i>		\$67.59	4.96%
BUFFALO TRIM 86%		\$450.45	33.09%
		TOTAL VALUE	% MARK-UP
		\$1,848.94	135.82%

WASTE ITEMS	LBS	% CARCASS WEIGHT
FAT & KIDNEY	74	12.94%
BONES	87	15.21%

LENGTH (SANDY RATIO)	LENGTH:WEIGHT RATIO
ROUND CIRCUMFERENCE	ROUND CIRCUMFERENCE:WEIGHT RATIO
HUMP DEPTH	HUMP:WEIGHT RATIO

ANIMAL	SEX	YEILD	GRADE	HCW	REA	KPH	YGM	YGA	LEAN	MAT	MARB	LEAN	FAT	PH	SHEAR
	HFR	MFAT	AFAT						LEAN	SKEL		L	B		FORCE
		1.08	0.64	572	9.2	2.0	4.8	3.7	310	190	220	33.94	-	5.48	4.5

2005 REALITY BASED CARCASS CLASS

LIVE BUFFALO WEIGHT	CARCASS WEIGHT	PER LB. VALUE	CARCASS VALUE	
	533	\$2.38	\$1,268.54	
			% OF TOTAL VALUE	
MIDDLE BUFFALO VALUE <i>(NY STRIP, TOP SIRLOIN BUTT, TENDERLOIN, RIB-EYE)</i>		\$696.34	54.89%	
BUFFALO CHUCK VALUE <i>(SHOULDER CLOD, INSIDE CHUCK ROLL, BRISKET)</i>		\$231.69	18.26%	
BUFFALO ROUND VALUE <i>(PELLED KNUCKLE, TOP ROUND, FLAT, EYE OF ROUND)</i>		\$383.98	30.27%	
BUFFALO THIN MEATS <i>(TRI-TIP, BALL-TIP, FLANK STEAK, BBQ RIB, SKIRT)</i>		\$64.98	5.12%	
BUFFALO TRIM 87%		\$417.70	32.93%	
		TOTAL VALUE	% MARK-UP	
		\$1,794.69	141.48%	

WASTE ITEMS	LBS	% CARCASS WEIGHT
FAT & KIDNEY	61.2	11.48%
BONES	82.16	15.41%

LENGTH (SANDY RATIO)	LENGTH:WEIGHT RATIO
ROUND CIRCUMFERENCE	ROUND CIRCUMFERENCE:WEIGHT RATIO
HUMP DEPTH	HUMP:WEIGHT RATIO

															RBOCA
ANIMAL	SEX	YEILD GRADE		HCW	REA	KPH	YGM	YGA	MAT		MARB	LEAN L	FAT B	PH	SHEAR FORCE
	HFR	MFAT	AFAT						LEAN	SKEL		L	B		6.0
		0.79	0.49	533	8.9	1.8	4.0	3.2	307	260	248	35.29	-	5.47	