

DTBA 2002 Reality Based Carcass Class *Program Details*

The Dakota Territory Buffalo Association (DTBA) held the second Reality Based Carcass Class in conjunction with the 2002 Black Hills Buffalo Classic Show and Sale. Last year, the carcass class offered another dimension to the DTBA's already successful live animal show and sale. Through this new class, the association has been able to focus on and give attention to the driving force of the buffalo industry, quality meat production.

Buffalo ranchers produce some of the healthiest, most appetizing red meat in the world and consumers can and will continue to demand this meat product. With that in mind, the DTBA decided to again host a carcass class that will help to educate producers on the economic benefits of taking their bull calves all the way to slaughter weight. Additionally, for the first time ever in the buffalo industry, the DTBA opened up the contest to heifers. With the addition of 10 available spots for heifers, this contest will mark the first time any data has ever been recorded on slaughter heifers. A total of 20 entries were accepted, 10 each of bulls and heifers. Trophies will awarded for the first three places. There will also be a \$5,000 cash prize for the first place carcass in the bulls and another \$5,000 cash award for the highest placing female carcass.

The success of last year's contest was partly due to the unique nature of it. About a year and a half ago, Buffalo, SD producer, Sandy Limpert, approached Bruce Anderson of RC Western Meats in Rapid City, SD. What Limpert was suggesting was to do a carcass contest, but with a different twist. He wanted to have the contest winner determined based on the retail value of the meat the animal was able to put in the box. This is an idea that Limpert has been kicking around for a number of years and has been fine-tuning the details. Having been told it couldn't be done, that just spurred him on to find a way to do it. When he approached Anderson, Anderson was intrigued with the idea and also, being a large regional bison meat purveyor, wanted to know the results for his own personal experience. After much discussion and lots of fine tuning, the Dakota Territory Buffalo Association (DTBA) was the official host of the new Reality-Based Carcass Class.

The contest idea is simple. After the animals are delivered and a live weight obtained, they are then slaughtered. A hot hanging weight is recorded. After hanging in the cooler for a set amount of time, the carcasses are halved and then quartered. Under the watchful eye of an independent party, in this case, Dr. Robert Maddock of South Dakota State University, the meat is trimmed to a quarter inch of fat cover. All the fat that was trimmed off is weighed. Each cut is then weighed with a consistent, current value per pound put on them. The remaining bones, minus the trimmed off meat, are also weighed. A sample of burger from each carcass is cooked and the fat content measured. Anderson has developed a sliding scale in which to base value of the burger on its percentage of lean meat, meaning the leaner the meat, the more it was worth per pound.

Upon the completion of the contest, a sheet is made for each entry. It contains data such as the carcass weight, the carcass value, the middle value, the chuck value, the round value, the thin meats value and the trim. It also contains the waste items, including the fat and kidney and the bones. The winner is determined by the highest percentage of growth from the carcass value to the retail value.

So, what is accomplished by this reality-based contest? Limpert hopes that the data recorded and provided to the producers will help them understand their feeding program and how it affects the final product. From Anderson's point of view, it helps producers know what kind of animal will make the packer and the producer the most money. Over time, the records kept from this type of contest will help producers make genetic and production decisions that will help their yields and produce an efficient product. When the data from the first contest was released to the public, there were many calls to the association noting that this industry first had done it's job in generating the beginning of a new database for buffalo meat producers.

Producers who entered the contest this year were asked to provide as much background data as possible on their animal, including genetic history, growth progress, feeding program, traveling information, nearly anything that might be recordable. Once again, photographs of the live animals were taken and photographs were taken throughout the entire process to record each entry and help producers and consumers to better understand the value of the meat they produce and consume.

Consignors entered in the 2005 Reality Based Carcass Class

Blue Valley Ranch, manager Perry Handyside, Kremmling, CO
Beaver Creek Buffalo Co., Brad Beavers, Jefferson, SD
Prairie Rose Buffalo Ranch, Heath Peterson, Revillo, SD
Expedition Buffalo Company, Perry & Susan Handyside, Kremmling, CO
Indian Springs Bison, Roy & Cheryl Krivoruchka, Belfield, ND
Gehl's Buffalo Hill Ranch, Mark & Kathy Gehl, Prescott, WI
Diamond Tail Ranch, Scott Butcher, mgr, Jelm, WY
Mosquito Park Enterprises, Rod Sather, Vivian, SD
Colorado Bison Co. at Hay Draw Ranch, Merle & Susan Maass, Union Center, SD
Double S Buffalo Company, Steve Schmitz & Dave Staum, Elk Point, SD
High Point Bison, Glen & Jill Klawonn, Pine Bluffs, WY
Poudre Basin Buffalo Company, Boy & Allison Meyer, Windsor, CO

BULLS

1st - Gehl's Buffalo Hill Ranch, Mark & Kathy Gehl, Prescott, WI
2nd - Prairie Rose Buffalo Ranch, Heath Peterson, Revillo, SD
3rd - Blue Valley Ranch, manager Perry Handyside, Kremmling, CO

HEIFERS

1st - Gehl's Buffalo Hill Ranch, Mark & Kathy Gehl, Prescott, WI
2nd - Diamond Tail Ranch, Scott Butcher, mgr, Jelm, WY
3rd - High Point Bison, Glen & Jill Klawonn, Pine Bluffs, WY

2005

Animal	Sex	Yield Grade		HCW	REA	KPH	YGM	YGA	MAT		MARB	Lean L	Fat B	pH	Shear Force	
		MFAT	AFAT						LEAN	SKEL						
1	Bull	0.16	0.08	568	11.3	1.5	1.7	1.5	250	240	160	32.78	.	5.50	9.3	4.23
3	Bull	0.40	0.20	633	9.1	1.5	3.3	2.8	330	180	120	33.26	.	5.53	7.9	3.58
4	Bull	0.36	0.28	662	10.2	1.0	2.9	2.7	310	140	130	33.13	.	5.58	6.6	3.00
5	Bull	0.40	0.24	674	10.1	2.0	3.2	2.8	280	160	180	33.35	.	5.48	7.5	3.43
7	Bull	0.36	0.28	630	10.0	1.5	2.9	2.7	330	150	170	34.36	.	5.44	5.5	2.50
8	Bull	0.36	0.24	594	9.8	2.0	2.9	2.6	320	140	120	31.93	.	5.77	15.7	7.15
10	Bull	0.32	0.24	569	10.8	1.5	2.3	2.1	340	170	170	33.76	.	5.45	6.4	2.93
11	Bull	0.36	0.28	646	12.0	1.5	2.3	2.1	280	160	180	35.39	.	5.40	7.2	3.28
12	Bull	0.56	0.40	602	11.4	2.0	2.9	2.5	290	180	280	34.35	.	5.45	6.7	3.05
15	Bull	0.12	0.08	673	11.4	1.0	1.9	1.8	330	170	150	33.48	.	5.37	5.1	2.30
2	Hfr	0.36	0.20	485	8.0	2.0	3.1	2.7	220	130	340	39.07	.	5.61	8.9	4.06
6	Hfr	1.08	0.64	572	9.2	2.0	4.8	3.7	310	190	220	33.94	.	5.48	4.5	2.05
9	Hfr	0.80	0.56	482	7.9	2.0	4.2	3.6	280	170	260	35.49	.	5.44	5.0	2.25
13	Hfr	0.68	0.48	593	10.4	1.0	3.3	2.8	340	420	280	33.56	.	5.46	6.1	2.78
14	Hfr	0.80	0.44	530	9.1	2.0	4.0	3.1	280	170	120	34.86	.	5.42	7.2	3.26
16	Hfr	1.00	0.60	536	9.0	1.5	4.5	3.5	410	480	270	34.79	.	5.42	4.5	2.03
Average		0.51	0.33	591	10.0	1.6	3.1	2.7	306	203	197	34.22		5.49	7.1	
Bull Avg		0.34	0.23	625	10.6	1.6	2.6	2.4	306	169	166	33.58		5.50	7.8	
Heifer Avg		0.79	0.49	533	8.9	1.8	4.0	3.2	307	260	248	35.29		5.47	6.0	
Beef Average		0.48	0.49	787	13.1	2.3	2.9	3.0	165	167	423	39.5	14.3	5.50	8.0	

Welcome

IF YOU PRINT, REPRINT, PRESENT, COPY, USE COLOR, TYPESET, DESIGN, DESKTOP PUBLISH, ADVERTISE,



DAKOTA TERRITORY BUFFALO ASSOCIATION

P.O. Box 4104 Rapid City, SD 57709

ANNOUNCE, INVITE, TRANSMIT, WRITE, EDIT, PROOF, TRAIN, INSTRUCT, ADVISE, INVOICE, BRIEF, POST, ISSUE, REISSUE, CALCULATE, INFORM, STICK-ON, REPORT, PLACARD,

HAND OUT BUSINESS CARDS, BULLETIN, CREATE, CORRESPOND, OR COMMUNICATE ON PAPER...CALL US!

2005 DTBA Carcass Class Placings

Bulls

- 1. Blue tag # 225 - Gehl 568 lbs
- 2. Orange # 6 - Heath Peterson 594 lbs
- 3. Black # 331 - Blue Valley Ranch 630 lbs
- 4. Yellow # 387 - Diamond Tail 673 lbs.
- 5. Yellow # 54 - Beavers 646 lbs.
- 6. Purple 3619 - Sather 633 lbs
- 7. White 301 - Maass 674 lbs
- 8. 17 - Schmitz 569 lbs
- 9. No Tag - Kirchikova 662 lbs

Heifers

- 1. White # 52 - Gehl 485 lbs
- 2. Yellow # 72 - Diamond Tail 536 lbs
- 3. Yellow # 200 - Klawonn 543 lbs
- 4. Red # 328 - Boyd Meyer 530 lbs
- 5. Orange 306 - Heath Peterson 482 lbs
- 6. Black 365 - Blue Valley 572 lbs



THE PRINT SHOP

401 Main Street • Rapid City, SD 57701-2731
605-342-COPY (2679) • FAX 605-342-1857
www.littleprint.com

If you've got a minute...we can print it!

PROMOTE, EXHIBIT, MAIL, SELL, DISPLAY, DISTRIBUTE, STUFF ENVELOPES,



Bull

Final Live Weight At Home, 12/31/04 - 1,025 pounds

Live Weight At Western Buffalo Company - n/a

Hot Hanging Weight - 568 pounds

Born: 10/16/02

Weaned on April 3, 2003

Weaning Weight - 400 pounds

The bull was with the cow the first winter and was fed creep feed mixture of 50% rolled oats, 50% corn and hay. The first summer, the calf was on the same creep feed mixture, with grass hay and pasture. He was finished on a mixture of 50% ground cob corn and 50% oats with grass available. His mother weighed 1,240 pounds on November 15, 2004.



2005 REALITY BASED CARCASS CLASS



LIVE BUFFALO WEIGHT	CARCASS WEIGHT	PER LB. VALUE	CARCASS VALUE	
	568	\$2.38	\$1,351.84	
			% OF TOTAL VALUE	
MIDDLE BUFFALO VALUE (NY STRIP, TOP SIRLOIN BUTT, TENDERLOIN, RIB-EYE)		\$754.65		55.82%
BUFFALO CHUCK VALUE (SHOULDER CLOD, INSIDE CHUCK ROLL, BRISKET)		\$264.75		19.58%
BUFFALO ROUND VALUE (PELLED KNUCKLE, TOP ROUND, FLAT, EYE OF ROUND)		\$455.86		33.72%
BUFFALO THIN MEATS (TRI-TIP, BALL-TIP, FLANK STEAK, BBQ RIB, SKIRT)		\$70.78		5.24%
BUFFALO TRIM 90%		\$467.40		34.58%
			TOTAL VALUE	% MARK-UP
			\$2,013.44	148.94%

WASTE ITEMS	LBS	% CARCASS WEIGHT
FAT & KIDNEY	20.5	3.61%
BONES	108	19.01%

LENGTH (SANDY RATIO)	LENGTH:WEIGHT RATIO
ROUND CIRCUMFERENCE	ROUND CIRCUMFERENCE:WEIGHT RATIO
HUMP DEPTH	HUMP:WEIGHT RATIO

RBCCA															
ANIMAL	SEX	YEILD GRADE		HCW	REA	KPH	YGM	YGA	MAT		MARB	LEAN	FAT	PH	SHEAR
BULL		MFAT	AFAT						LEAN	SKEL		L	B		FORCE
		0.16	0.08	568	11.3	1.5	1.7	1.5	250	240	160	32.78	-	5.50	9.3



Bull

Final Live Weight At Home, 1,020 pounds.
Live Weight At Western Buffalo Company - n/a
Hot Hanging Weight - 594 pounds

Weaned on January 15, 2004

Weaning Weight - 402 pounds

The first winter, the bull was fed free choice hay and creep feed with 100 pounds DDG and 100 pounds corn and 1,800 pounds screenings. The first summer he was fed the same until July, when he was put on hay only. He was in a dry lot to finish with free choice hay and a mixture of 900 pounds corn, 500 pounds DDG, 600 pounds screenings and 50 pounds mineral. He was finished for 150 days.



2005 REALITY BASED CARCASS CLASS



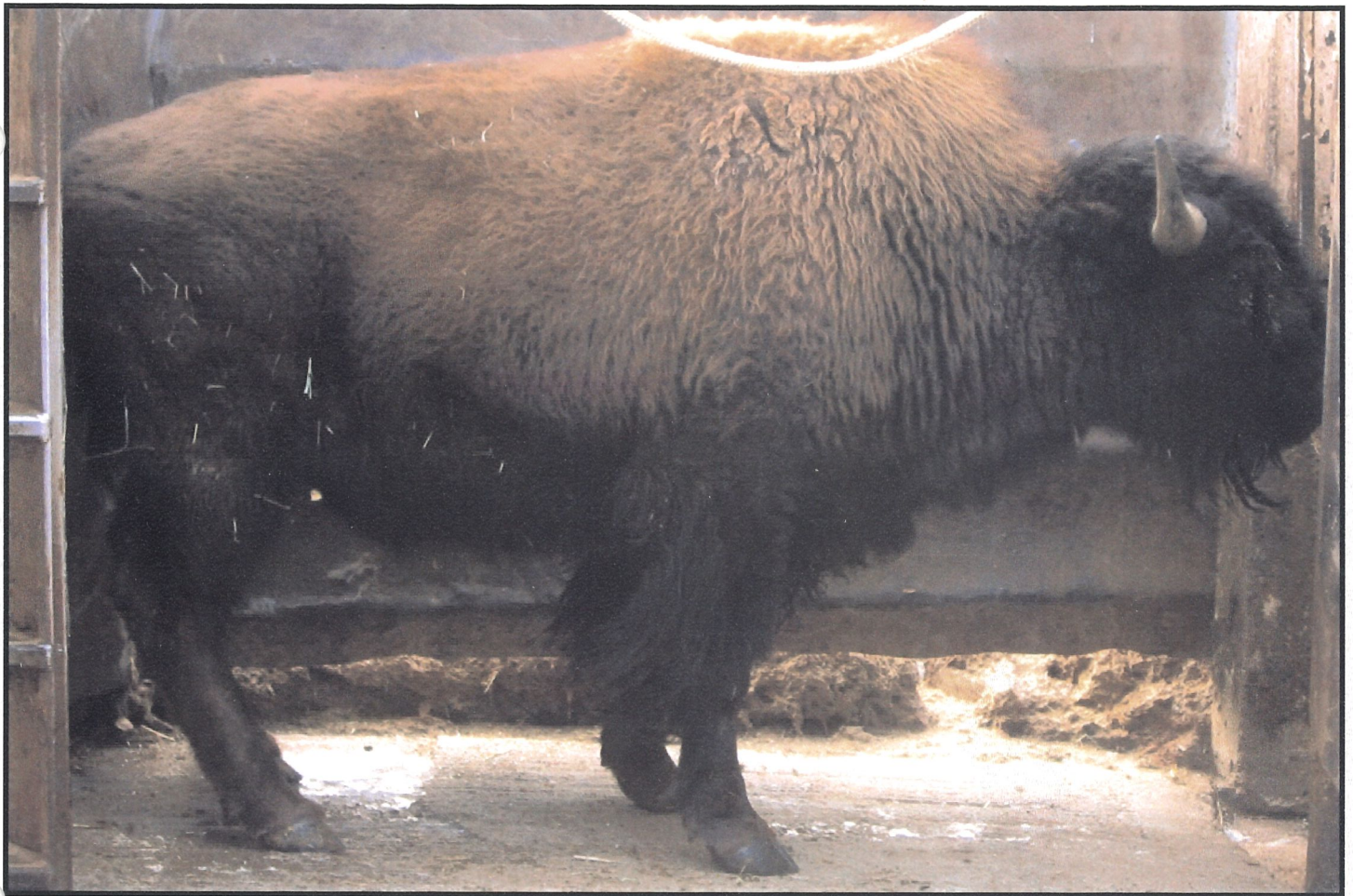
LIVE BUFFALO WEIGHT	CARCASS WEIGHT	PER LB. VALUE	CARCASS VALUE
	594	\$2.38	\$1,413.72
MIDDLE BUFFALO VALUE (NY STRIP, TOP SIRLOIN BUTT, TENDERLOIN, RIB-EYE)			% OF TOTAL VALUE
			56.10%
BUFFALO CHUCK VALUE (SHOULDER CLOD, INSIDE CHUCK ROLL, BRISKET)			19.31%
BUFFALO ROUND VALUE (PELLED KNUCKLE, TOP ROUND, FLAT, EYE OF ROUND)			31.58%
BUFFALO THIN MEATS (TRI-TIP, BALL-TIP, FLANK STEAK, BBQ RIB, SKIRT)			4.73%
BUFFALO TRIM 88%			36.90%
TOTAL VALUE			% MARK-UP
\$2,101.10			148.62%

WASTE ITEMS	LBS	% CARCASS WEIGHT
FAT & KIDNEY	26.3	4.43%
BONES	102	17.17%

LENGTH (SANDY RATIO)	LENGTH:WEIGHT RATIO
ROUND CIRCUMFERENCE	ROUND CIRCUMFERENCE:WEIGHT RATIO
HUMP DEPTH	HUMP:WEIGHT RATIO

ANIMAL	SEX	YEILD GRADE		HCW	REA	KPH	YGM	YGA	LEAN	MAT	SKEL	MARB	LEAN	FAT	PH	SHEAR
	BULL	MFAT	AFAT										L	B		FORCE
		0.36	0.24	594	9.8	2.0	2.9	2.6	320		140	120	31.93	-	5.77	15.7

RBCCA



Bull

Final Live Weight At Home - 1,086 pounds
Live Weight At Western Buffalo Company - n/a
Hot Hanging Weight - 630 pounds

Weaned on November 15, 2003

Weaning Weight - 515 pounds

The bull was fed five pounds per day of corn and free choice grass/hay the first winter. The first summer, he was fed on grass pasture with a creep feeder containing bison feedlot pellets. The bull was finished for 100 days in a lot with free choice grass hay and bison feedlot pellet. The bull's mother weighed 1,320 pounds.



2005 REALITY BASED CARCASS CLASS



LIVE BUFFALO WEIGHT	CARCASS WEIGHT	PER LB. VALUE	CARCASS VALUE
	630	\$2.38	\$1,499.40
			% OF TOTAL VALUE
MIDDLE BUFFALO VALUE (NY STRIP, TOP SIRLOIN BUTT, TENDERLOIN, RIB-EYE)		\$830.18	55.37%
BUFFALO CHUCK VALUE (SHOULDER CLOD, INSIDE CHUCK ROLL, BRISKET)		\$274.50	18.31%
BUFFALO ROUND VALUE (PELLED KNUCKLE, TOP ROUND, FLAT, EYE OF ROUND)		\$469.35	31.30%
BUFFALO THIN MEATS (TRI-TIP, BALL-TIP, FLANK STEAK, BBQ RIB, SKIRT)		\$82.01	5.47%
BUFFALO TRIM 88%		\$529.92	35.34%
		TOTAL VALUE	% MARK-UP
		\$2,185.96	145.79%

WASTE ITEMS	LBS	% CARCASS WEIGHT
FAT & KIDNEY	40	6.35%
BONES	108	17.14%

LENGTH (SANDY RATIO)	LENGTH:WEIGHT RATIO
ROUND CIRCUMFERENCE	ROUND CIRCUMFERENCE:WEIGHT RATIO
HUMP DEPTH	HUMP:WEIGHT RATIO

ANIMAL	SEX	YEILD	GRADE	HCW	REA	KPH	YGM	YGA	LEAN	MAT	SKEL	MARB	LEAN	FAT	PH	SHEAR
BULL		0.36	0.28	630	10.0	1.5	2.9	2.7	330	150	170	34.36	-	5.44	5.5	



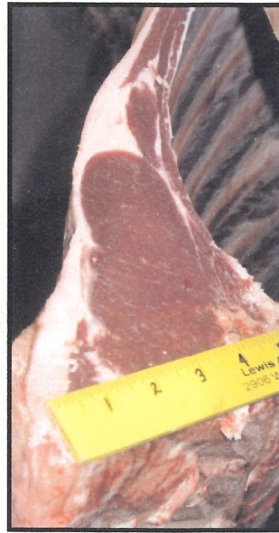
Bull

Final Live Weight At Home - 1,100 pounds
Live Weight At Western Buffalo Company - n/a
Hot Hanging Weight - 673 pounds

Weaned in November of 2003
Weaning Weight - 376 pounds

The bull was on grass hay for the first winter. The first summer, he was fed grass hay with a 14 percent cake. He was finished in a feedlot situation for 90 days on a mixture of grass and 14 percent pellets.

2005 REALITY BASED CARCASS CLASS



LIVE BUFFALO WEIGHT	CARCASS WEIGHT	PER LB. VALUE	CARCASS VALUE
	673	\$2.38	\$1,601.74
			% OF TOTAL VALUE
MIDDLE BUFFALO VALUE (NY STRIP, TOP SIRLOIN BUTT, TENDERLOIN, RIB-EYE)		\$894.59	55.85%
BUFFALO CHUCK VALUE (SHOULDER CLOD, INSIDE CHUCK ROLL, BRISKET)		\$314.22	19.62%
BUFFALO ROUND VALUE (PELLED KNUCKLE, TOP ROUND, FLAT, EYE OF ROUND)		\$476.87	29.77%
BUFFALO THIN MEATS (TRI-TIP, BALL-TIP, FLANK STEAK, BBQ RIB, SKIRT)		\$74.52	4.65%
BUFFALO TRIM 87%		\$554.76	34.63%
		TOTAL VALUE	% MARK-UP
		\$2,314.96	144.53%

WASTE ITEMS	LBS	% CARCASS WEIGHT
FAT & KIDNEY	51.85	7.70%
BONES	115	17.09%

LENGTH (SANDY RATIO)	LENGTH:WEIGHT RATIO
ROUND CIRCUMFERENCE	ROUND CIRCUMFERENCE:WEIGHT RATIO
HUMP DEPTH	HUMP:WEIGHT RATIO

ANIMAL	SEX	YEILD	GRADE	HCW	REA	KPH	YGM	YGA	LEAN	MAT	SKEL	MARB	LEAN	FAT	PH	SHEAR
	BULL	0.12	0.08	673	11.4	1.0	1.9	1.8	330	170	150	33.48	-	5.37	5.1	

RBCCA

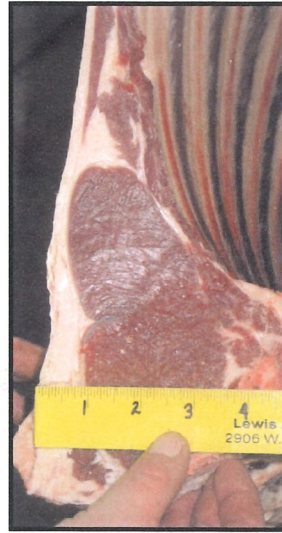


Bull

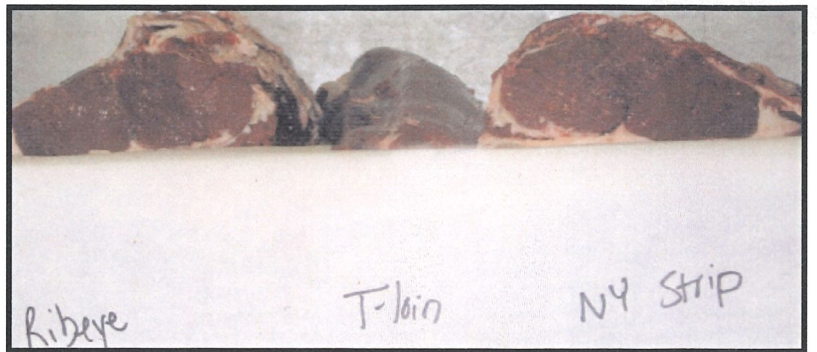
Final Live Weight At Home, 1,154 pounds
Live Weight At Western Buffalo Company - n/a
Hot Hanging Weight -646 pounds

Weaned on October 20, 2003
Weaning Weight - 485 pounds

The bull was on free choice alfalfa and grass mix hay with five pounds of rolled corn per day for the first winter. The first summer, the calf was out on grass for 100 days, June 1 through September 11. The bull was finished for 110 days on free choice alfalfa/grass hay with free choice rolled corn and free choice mineral in a self-feeder.



2005 REALITY BASED CARCASS CLASS



LIVE BUFFALO WEIGHT	CARCASS WEIGHT	PER LB. VALUE	CARCASS VALUE
	646	\$2.38	\$1,537.48
			% OF TOTAL VALUE
MIDDLE BUFFALO VALUE (NY STRIP, TOP SIRLOIN BUTT, TENDERLOIN, RIB-EYE)		\$860.10	55.94%
BUFFALO CHUCK VALUE (SHOULDER CLOD, INSIDE CHUCK ROLL, BRISKET)		\$277.21	18.03%
BUFFALO ROUND VALUE (PELLED KNUCKLE, TOP ROUND, FLAT, EYE OF ROUND)		\$458.76	29.84%
BUFFALO THIN MEATS (TRI-TIP, BALL-TIP, FLANK STEAK, BBQ RIB, SKIRT)		\$79.30	5.16%
BUFFALO TRIM 88%		\$546.48	35.54%
		TOTAL VALUE	% MARK-UP
		\$2,221.85	144.51%

WASTE ITEMS	LBS	% CARCASS WEIGHT
FAT & KIDNEY	46.05	7.13%
BONES	114	17.65%

LENGTH (SANDY RATIO)	LENGTH:WEIGHT RATIO
ROUND CIRCUMFERENCE	ROUND CIRCUMFERENCE:WEIGHT RATIO
HUMP DEPTH	HUMP:WEIGHT RATIO

RBOCA															
ANIMAL	SEX	YEILD GRADE		HCW	REA	KPH	YGM	YGA	MAT		LEAN L	FAT B	PH	SHEAR FORCE	
	BULL	MFAT	AFAT						LEAN	SKEL	MARB				
		0.36	0.28	646	12.0	1.5	2.3	2.1	280	160	180	35.39	-	5.40	7.2



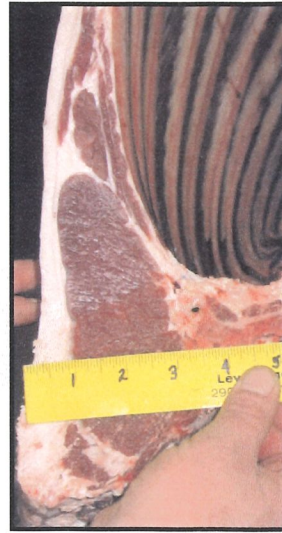
Bull

Final Live Weight At Home - 1,203 pounds
Live Weight At Western Buffalo Company - n/a
Hot Hanging Weight - 633 pounds

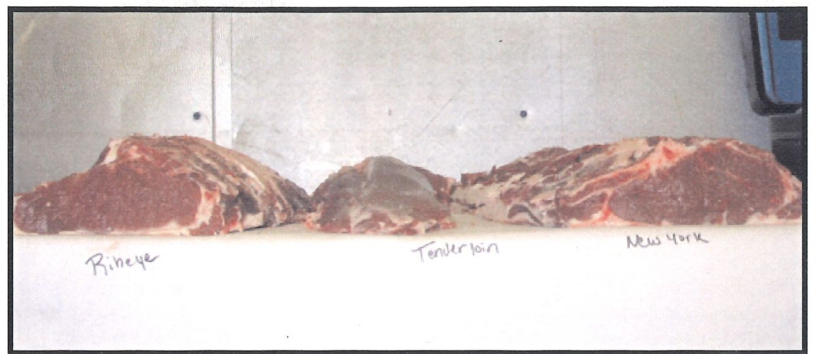
Weaned on January 2, 2004

Weaning Weight - 525 pounds

The bull was fed grass hay and whole oats for the first winter and the first summer. He was finished for 97 days on a mixture of oat straw, hay, ground oats and ground corn.



2005 REALITY BASED CARCASS CLASS



LIVE BUFFALO WEIGHT	CARCASS WEIGHT	PER LB. VALUE	CARCASS VALUE
	633	\$2.38	\$1,506.54
			% OF TOTAL VALUE
MIDDLE BUFFALO VALUE <i>(NY STRIP, TOP SIRLOIN BUTT, TENDERLOIN, RIB-EYE)</i>		\$839.05	55.69%
BUFFALO CHUCK VALUE <i>(SHOULDER CLOD, INSIDE CHUCK ROLL, BRISKET)</i>		\$294.27	19.53%
BUFFALO ROUND VALUE <i>(PELLED KNUCKLE, TOP ROUND, FLAT, EYE OF ROUND)</i>		\$442.08	29.34%
BUFFALO THIN MEATS <i>(TRI-TIP, BALL-TIP, FLANK STEAK, BBQ RIB, SKIRT)</i>		\$78.53	5.21%
BUFFALO TRIM 87%		\$517.00	34.32%
		TOTAL VALUE	% MARK-UP
		\$2,170.93	144.10%

WASTE ITEMS	LBS	% CARCASS WEIGHT
FAT & KIDNEY	52.1	8.23%
BONES	107	16.90%

LENGTH (SANDY RATIO)	LENGTH:WEIGHT RATIO
ROUND CIRCUMFERENCE	ROUND CIRCUMFERENCE:WEIGHT RATIO
HUMP DEPTH	HUMP:WEIGHT RATIO

ANIMAL	SEX	YEILD	GRADE	HCW	REA	KPH	YGM	YGA	LEAN	MAT	SKEL	MARB	LEAN	FAT	PH	SHEAR
	BULL	0.40	0.20	633	9.1	1.5	3.3	2/8	330		180	120	33.26	-	5.53	7.9

RBCCA



Bull

Final Live Weight At Home - n/a

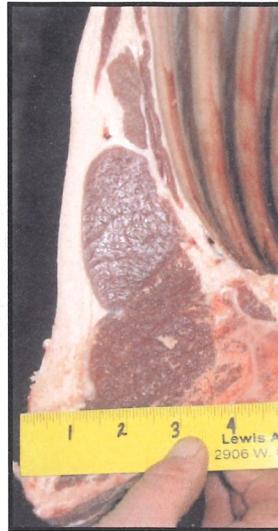
Live Weight At Western Buffalo Company - n/a

Hot Hanging Weight - 674 pounds

Weaned on October 25, 2003

Weaning Weight - n/a

The bull was fed pasture; grass and grass/alfalfa hay and grained 2/3 oats and 1/3 corn intermittently for the first winter. Fed pasture and grass or grass/alfalfa hay for the first summer. The bull was finished free choice for 120 days on grass hay, grass/alfalfa hay, millet hay, oat hay and prairie hay. The bull's mother weighs over 1,100 pounds.



2005 REALITY BASED CARCASS CLASS



LIVE BUFFALO WEIGHT	CARCASS WEIGHT	PER LB. VALUE	CARCASS VALUE
	674	\$2.38	\$1,604.12
			% OF TOTAL VALUE
MIDDLE BUFFALO VALUE		\$897.20	55.93%
<i>(NY STRIP, TOP SIRLOIN BUTT, TENDERLOIN, RIB-EYE)</i>			
BUFFALO CHUCK VALUE		\$282.72	17.62%
<i>(SHOULDER CLOD, INSIDE CHUCK ROLL, BRISKET)</i>			
BUFFALO ROUND VALUE		\$490.36	30.57%
<i>(PELLED KNUCKLE, TOP ROUND, FLAT, EYE OF ROUND)</i>			
BUFFALO THIN MEATS		\$75.64	4.72%
<i>(TRI-TIP, BALL-TIP, FLANK STEAK, BBQ RIB, SKIRT)</i>			
BUFFALO TRIM 87%		\$558.25	34.80%
		TOTAL VALUE	% MARK-UP
		\$2,304.17	143.64%

WASTE ITEMS	LBS	% CARCASS WEIGHT
FAT & KIDNEY	54.8	8.13%
BONES	115	17.06%

LENGTH (SANDY RATIO)	LENGTH:WEIGHT RATIO
ROUND CIRCUMFERENCE	ROUND CIRCUMFERENCE:WEIGHT RATIO
HUMP DEPTH	HUMP:WEIGHT RATIO

ANIMAL	SEX	YEILD GRADE		HCW	REA	KPH	YGM	YGA	MAT		LEAN L	FAT B	PH	SHEAR FORCE	
	BULL	0.40	0.24	674	10.1	2.0	3.2	2.8	LEAN	SKEL	MARB	33.35	-	5.48	7.5
									280	160	180				



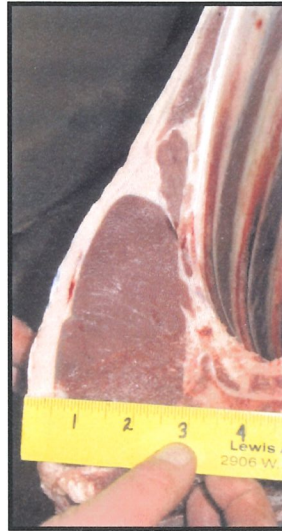
Bull

Final Live Weight At Home - 1,040 pounds
Live Weight At Western Buffalo Company - n/a
Hot Hanging Weight - 569 pounds

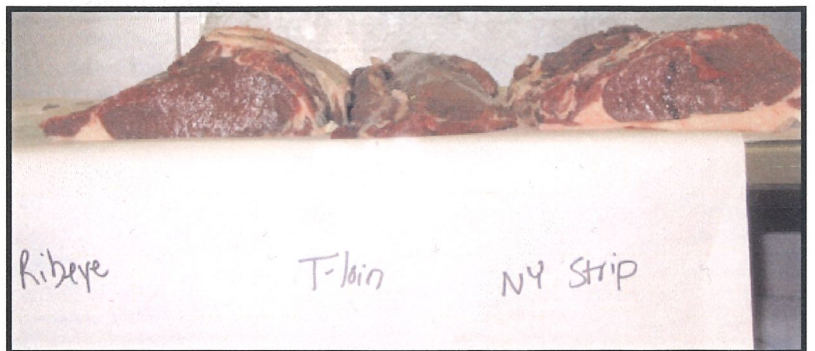
Weaned on February 22, 2004

Weaning Weight - 460 pounds

The bull was fed grass and corn, free choice for the first winter and first summer. He was finished on grass hay and rolled corn for 300 days.



2005 REALITY BASED CARCASS CLASS



LIVE BUFFALO WEIGHT	CARCASS WEIGHT	PER LB. VALUE	CARCASS VALUE
	569	\$2.38	\$1,354.22
			% OF TOTAL VALUE
MIDDLE BUFFALO VALUE (NY STRIP, TOP SIRLOIN BUTT, TENDERLOIN, RIB-EYE)		\$723.78	53.45%
BUFFALO CHUCK VALUE (SHOULDER CLOD, INSIDE CHUCK ROLL, BRISKET)		\$251.72	18.59%
BUFFALO ROUND VALUE (PELLED KNUCKLE, TOP ROUND, FLAT, EYE OF ROUND)		\$418.07	30.87%
BUFFALO THIN MEATS (TRI-TIP, BALL-TIP, FLANK STEAK, BBQ RIB, SKIRT)		\$65.79	4.86%
BUFFALO TRIM 87%		\$474.72	35.05%
		TOTAL VALUE	% MARK-UP
		\$1,934.08	142.82%

WASTE ITEMS	LBS	% CARCASS WEIGHT
FAT & KIDNEY	38.45	6.76%
BONES	101	17.75%

LENGTH (SANDY RATIO)	LENGTH:WEIGHT RATIO
ROUND CIRCUMFERENCE	ROUND CIRCUMFERENCE:WEIGHT RATIO
HUMP DEPTH	HUMP:WEIGHT RATIO

RBCCA																
ANIMAL	SEX	YEILD GRADE		HCW	REA	KPH	YGM	YGA	MAT		MARB	LEAN L	FAT B	PH	SHEAR FORCE	
	BULL	0.32	0.24	569	10.8	1.5	2.3	2.1	LEAN	SKEL	170	33.76	-	5.45	6.4	