

Consignors entered in the 2004 Reality Based Carcass Class

Expedition Buffalo Company, Perry & Susan Handyside, Kremmling, CO  
Blue Valley Ranch, manager Perry Handyside, Kremmling, CO  
Nolz Poor Farm Bison, Ed & Deanna Nolz, Sioux Falls, SD  
Beaver Creek Buffalo Co., Brad Beavers, Jefferson, SD  
Prairie Rose Buffalo Ranch, Heath Peterson, Reville, SD  
Rossow Buffalo Ranch, Lloyd & Clifford Rossow, Flasher, ND  
Expedition Buffalo Company, Perry & Susan Handyside, Kremmling, CO  
Jumpoff Buffalo Ranch, Scott & Susan Peterson, Belle Fourche, SD  
Snyder Land & Development, Rex & Ronda Snyder, Lyman, WY  
Indian Springs Bison, Roy & Cheryl Krivoruchka, Belfield, ND

**BULLS**

1st - Expedition Buffalo Company, Perry & Susan Handyside, Kremmling, CO  
2nd - Beaver Creek Buffalo Co., Brad Beavers, Jefferson, SD  
3rd - Nolz Poor Farm Bison, Ed & Deanna Nolz, Sioux Falls, SD

**HEIFERS**

1st - Beaver Creek Buffalo Co., Brad Beavers, Jefferson, SD  
2nd - Blue Valley Ranch, manager Perry Handyside, Kremmling, CO  
3rd - Nolz Poor Farm Bison, Ed & Deanna Nolz, Sioux Falls, SD

2004

Animal	Sex	Yield Grade		HCW	REA	KPH	YGM	YGA	MAT		Lean L	Fat B	pH	Shear Force
		MFAT	AFAT						LEAN	SKEL				
1	Bull	0.36	0.28	631	11.1	1.5	2.5	2.3	180	290	170	35.71	5.64	6.9
3	Bull	0.20	0.28	477	9.4	2.0	2.2	2.4	140	120	110	40.51	5.60	10.9
5	Bull	0.36	0.24	652	11.7	2.0	2.5	2.2	130	170	320	36.12	5.56	5.5
6	Bull	0.44	0.24	548	10.4	1.5	2.7	2.2	280	180	200	36.06	5.51	9.5
8	Bull	0.40	0.20	500	9.5	1.5	2.7	2.2	130	140	210	39.44	5.51	7.6
12	Bull	0.68	0.32	590	11.7	2.0	3.1	2.2	190	190	220	36.26	5.56	7.6
13	Bull	0.48	0.32	621	10.9	1.5	2.9	2.5	280	180	190	39.42	5.61	8.3
14	Bull	0.56	0.40	706	10.3	1.5	3.6	3.2	280	180	320	35.62	5.56	8.6
15	Bull	0.32	0.16	620	11.9	1.0	2.0	1.6	290	160	160	38.26	5.62	9.5
2	Hfr	1.32	0.44	605	10.7	1.5	5.0	2.8	390	510	280	35.46	5.62	10.6
7	Hfr	0.64	0.28	500	11.1	1.5	2.7	1.8	140	150	320	37.98	5.54	10.4
9	Hfr	0.60	0.24	404	9.6	1.5	2.8	1.9	140	160	280	37.55	5.50	8.5
10	Hfr	0.56	0.32	572	9.8	1.5	3.2	2.6	190	340	340	38.98	5.51	6.2
11	Hfr	0.68	0.36	513	8.7	2.0	3.8	3.0	150	160	300	37.42	5.58	9.6
4	Hfr(B)	0.64	0.28	420	8.9	1.5	3.1	2.2	150	190	270	36.58	5.62	9.4
16	Hfr(B)	0.56	0.40	585	10.3	1.5	3.1	2.7	160	340	330	37.81	5.57	13.5
Average		0.55	0.30	559	10.4	1.6	3.0	2.4	201	216	251	37.45	5.57	8.9
Bull Avg		0.42	0.27	594	10.8	1.6	2.7	2.3	211	179	211	37.49	5.57	8.3
Heifer Avg		0.71	0.33	514	9.9	1.6	3.4	2.4	189	264	303	37.40	5.56	9.7
Beef Average		0.48	0.49	787	13.1	2.3	2.9	3.0	165	167	423	39.5	5.50	8.0

# 2004 DTBA Carcass class

## Placings

Bulls	1.	Green tag #208	Perry Handyside - Expedition Buffalo Co.
	2.	Blue tag #100	Brad Beavers
	3.	purple tag #40	Nolz
	4.	blue tag #244	Blue Valley Ranch
	5.	no tag XX	Lloyd Rossow
	6.	green tag #16	Scott Peterson
	7.	blue tag #41	Heath Peterson
	8.	yellow tag #120	Rex Snyder
	9.	no tag X	Roy K.

Heifers	1.	blue tag #23	Brad Beavers
	2.	blue tag #261	Blue Valley Ranch
	3.	blue tag #3	Ed Nolz
	4.	blue tag #19	Lloyd Rossow
	5.	white tag #2211	Scott Peterson
	6.	white tag #9	Rex Snyder
	7.	Red tag #92	Heath Peterson



Heifer

Final Live Weight At Home - 750 pounds

Hot Hanging Weight - 404 pounds

Weaned on 10/26/02

Weaning Weight - 327 pounds

This heifer was fed on cornstalks, brome hay and mixed hay for the first winter and pasture for the first summer. She was fed out on cracked corn for 90 to 95 days, along with cornstalks, brome hay and mixed hay.

# 2004 REALITY BASED CARCASS CLASS



LIVE BUFFALO WEIGHT	CARCASS WEIGHT	PER LB. VALUE	CARCASS VALUE
	404	\$2.38	\$961.52
			% OF TOTAL VALUE
<b>MIDDLE BUFFALO VALUE</b> (NY STRIP, TOP SIRLOIN BUTT, TENDERLOIN, RIB-EYE)		\$510.15	53.06%
<b>BUFFALO CHUCK VALUE</b> (SHOULDER CLOD, INSIDE CHUCK ROLL, BRISKET)		\$172.34	17.92%
<b>BUFFALO ROUND VALUE</b> (PELLED KNUCKLE, TOP ROUND, FLAT, EYE OF ROUND)		\$319.14	33.19%
<b>BUFFALO THIN MEATS</b> (TRI-TIP, BALL-TIP, FLANK STEAK, BBQ RIB, SKIRT)		\$52.93	5.50%
<b>BUFFALO TRIM</b> 85%		\$316.25	32.89%
		<b>TOTAL VALUE</b>	<b>% MARK-UP</b>
		\$1,370.81	142.57%

WASTE ITEMS	LBS	% CARCASS WEIGHT
FAT & KIDNEY		%
BONES		%

LENGTH (SANDY RATIO )	LENGTH:WEIGHT RATIO
ROUND CIRCUMFERENCE	ROUND CIRCUMFERENCE:WEIGHT RATIO
HUMP DEPTH	HUMP:WEIGHT RATIO

ANIMAL	SEX	YEILD	GRADE	HCW	REA	KPH	YGM	YGA	LEAN	MAT	SKEL	MARB	LEAN	FAT	PH	SHEAR
	HFR	0.60	AFAT 0.24	404	9.6	1.5	2.8	1.9	140	160	280	37.55	-	5.50	8.5	



Heifer

Final Live Weight At Home - 916 pounds

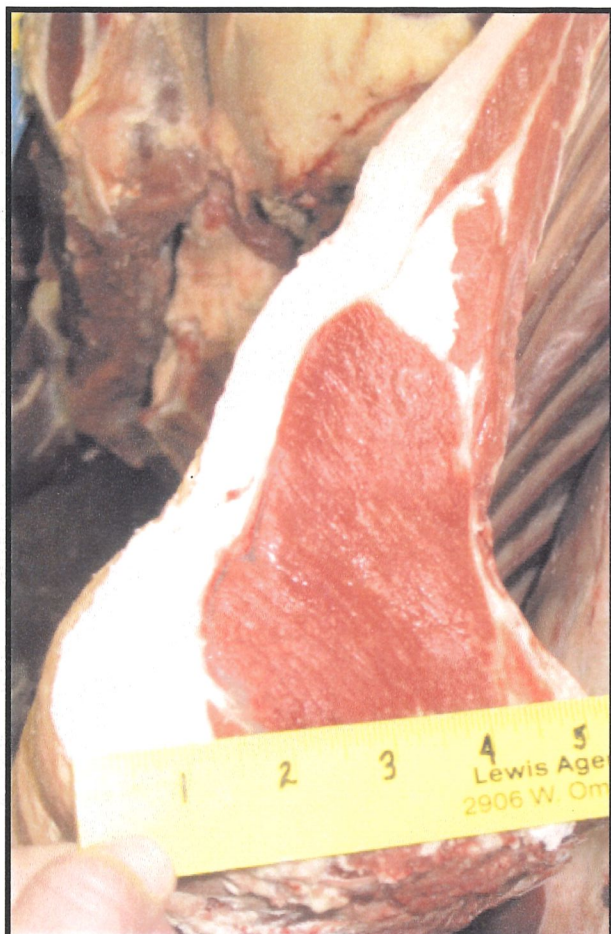
Hot Hanging Weight - 500 pounds

Weaned on 11/15/02

Weaning Weight - 550 pounds

This heifer was fed two pounds per day of ground corn and free choice grass hay for the first winter. She was turned out to pasture for 150 and then put on finish feed for 90 days. The finish feed consisted of ground corn, alfalfa and grass hay. She was fed 13 pounds per day of the ground corn.

# 2004 REALITY BASED CARCASS CLASS



LIVE BUFFALO WEIGHT	CARCASS WEIGHT	PER LB. VALUE	CARCASS VALUE
	500	\$2.38	\$1,190.00
			<b>% OF TOTAL VALUE</b>
<b>MIDDLE BUFFALO VALUE</b> (NY STRIP, TOP SIRLOIN BUTT, TENDERLOIN, RIB-EYE)		\$663.49	55.76%
<b>BUFFALO CHUCK VALUE</b> (SHOULDER CLOD, INSIDE CHUCK ROLL, BRISKET)		\$223.58	18.79%
<b>BUFFALO ROUND VALUE</b> (PELLED KNUCKLE, TOP ROUND, FLAT, EYE OF ROUND)		\$351.45	29.53%
<b>BUFFALO THIN MEATS</b> (TRI-TIP, BALL-TIP, FLANK STEAK, BBQ RIB, SKIRT)		\$66.67	5.60%
<b>BUFFALO TRIM</b> 86%		\$382.20	32.12%
		<b>TOTAL VALUE</b>	<b>% MARK-UP</b>
		\$1,687.39	141.80%

WASTE ITEMS	LBS	% CARCASS WEIGHT
FAT & KIDNEY		%
BONES		%

LENGTH (SANDY RATIO )	LENGTH:WEIGHT RATIO
ROUND CIRCUMFERENCE	ROUND CIRCUMFERENCE:WEIGHT RATIO
HUMP DEPTH	HUMP:WEIGHT RATIO

ANIMAL	SEX	YEILD	GRADE	HCW	REA	KPH	YGM	YGA	LEAN	MAT	SKEL	MARB	LEAN	FAT	PH	SHEAR
	HFR	0.64	0.28	500	11.1	1.5	2.7	1.8	140		150	320	37.98	-	5.54	10.4

RBCCQ



Heifer

Final Live Weight At Home - 820 pounds

Hot Hanging Weight - 420 pounds

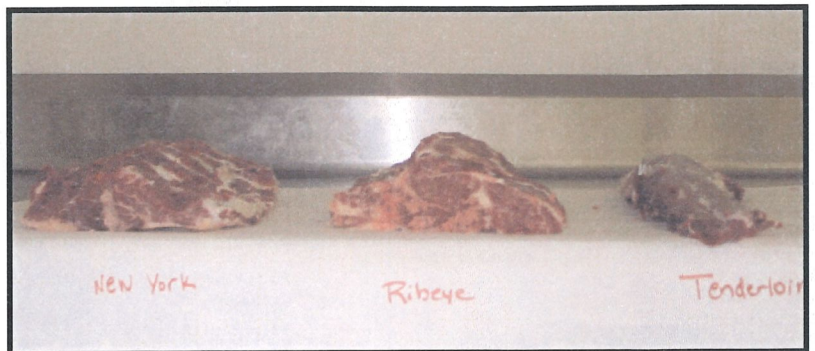
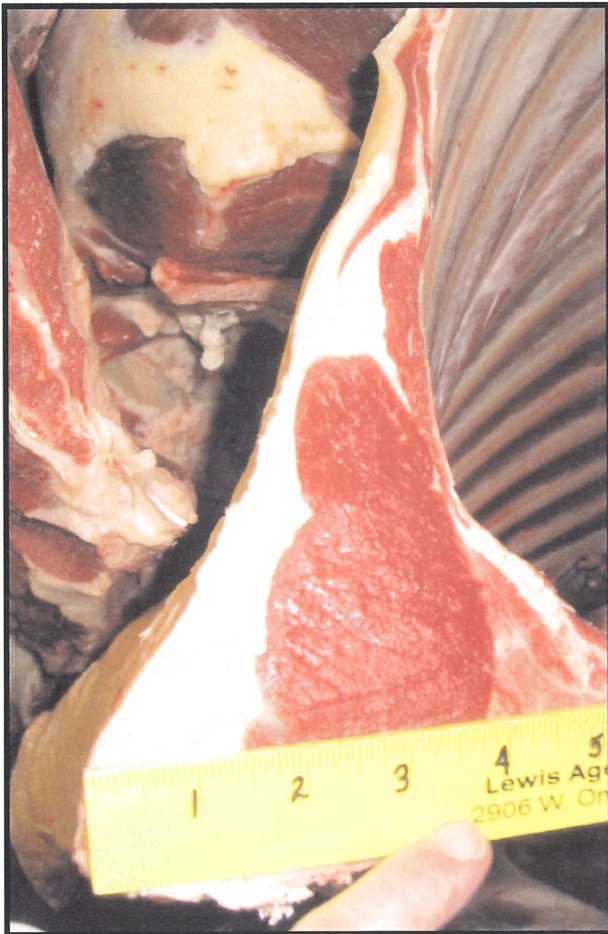
Weaned on January 2002

Weaning Weight - 456 pounds

This heifer was fed four pounds of grain per day for the first winter and grass for the first summer. She was not on any type of feed to finish. This is a grass only carcass animal.



# 2004 REALITY BASED CARCASS CLASS



LIVE BUFFALO WEIGHT	CARCASS WEIGHT	PER LB. VALUE	CARCASS VALUE
	420	\$2.38	\$999.60
			% OF TOTAL VALUE
<b>MIDDLE BUFFALO VALUE</b> (NY STRIP, TOP SIRLOIN BUTT, TENDERLOIN, RIB-EYE)		\$530.03	53.02%
<b>BUFFALO CHUCK VALUE</b> (SHOULDER CLOD, INSIDE CHUCK ROLL, BRISKET)		\$194.05	19.41%
<b>BUFFALO ROUND VALUE</b> (PELLED KNUCKLE, TOP ROUND, FLAT, EYE OF ROUND)		\$313.69	31.38%
<b>BUFFALO THIN MEATS</b> (TRI-TIP, BALL-TIP, FLANK STEAK, BBQ RIB, SKIRT)		\$59.11	5.91%
<b>BUFFALO TRIM</b> 85%		\$313.20	31.33%
		<b>TOTAL VALUE</b>	<b>% MARK-UP</b>
		\$1,410.08	141.06%

WASTE ITEMS	LBS	% CARCASS WEIGHT
FAT & KIDNEY		%
BONES		%

LENGTH (SANDY RATIO)	LENGTH:WEIGHT RATIO
ROUND CIRCUMFERENCE	ROUND CIRCUMFERENCE:WEIGHT RATIO
HUMP DEPTH	HUMP:WEIGHT RATIO

ANIMAL	SEX	YEILD	GRADE	HCW	REA	KPH	YGM	YGA	LEAN	MAT	SKEL	MARB	LEAN	FAT	PH	SHEAR
	HFR	0.64	0.28	420	8.9	1.5	3.1	2.2	150	190	270	36.58	-	5.62	9.4	

RBCCN



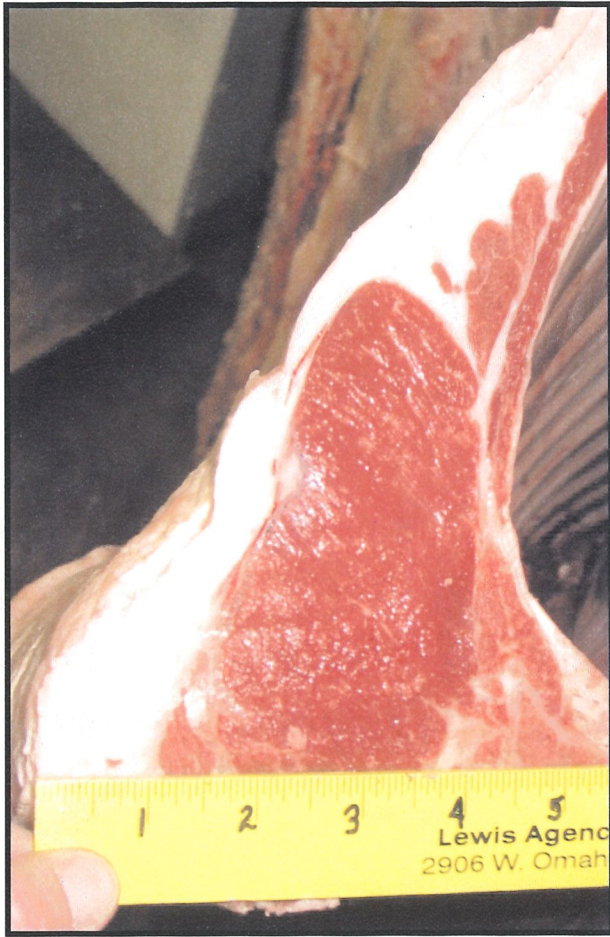
Heifer

Final Live Weight At Home, n/a  
Hot Hanging Weight - 585 pounds

Weaned on 12/12/02

Weaning Weight - 445 pounds

This heifer was put on a self-feeder for brome hay and a self-feeder of 3/4 wheat screenings and 1/4 corn pellets for the first winter and summer. She was put on long hay with no pellets from May 1 to Sept. 1, 2003 and was then put on pellets and hay on Sept. 1 until January 4, 2004. She was finished on brome and crested wheat hay and a pellet containing 3/4 wheat screenings and 1/4 corn.



# 2004 REALITY BASED CARCASS CLASS



LIVE BUFFALO WEIGHT	CARCASS WEIGHT	PER LB. VALUE	CARCASS VALUE
	585	\$2.38	\$1,392.30
			% OF TOTAL VALUE
<b>MIDDLE BUFFALO VALUE</b> (NY STRIP, TOP SIRLOIN BUTT, TENDERLOIN, RIB-EYE)		\$727.64	52.26%
<b>BUFFALO CHUCK VALUE</b> (SHOULDER CLOD, INSIDE CHUCK ROLL, BRISKET)		\$265.43	19.06%
<b>BUFFALO ROUND VALUE</b> (PELLED KNUCKLE, TOP ROUND, FLAT, EYE OF ROUND)		\$433.95	31.17%
<b>BUFFALO THIN MEATS</b> (TRI-TIP, BALL-TIP, FLANK STEAK, BBQ RIB, SKIRT)		\$71.40	5.13%
<b>BUFFALO TRIM 85%</b>		\$433.60	31.14%
		<b>TOTAL VALUE</b>	<b>% MARK-UP</b>
		\$1,932.02	138.76%

WASTE ITEMS	LBS	% CARCASS WEIGHT
FAT & KIDNEY		%
BONES		%

LENGTH (SANDY RATIO)	LENGTH:WEIGHT RATIO
ROUND CIRCUMFERENCE	ROUND CIRCUMFERENCE:WEIGHT RATIO
HUMP DEPTH	HUMP:WEIGHT RATIO

ANIMAL	SEX	YEILD	GRADE	HCW	REA	KPH	YGM	YGA	LEAN	MAT	MARB	LEAN	FAT	PH	SHEAR
	HFR	0.56	0.40	585	10.3	1.5	3.1	2.7	160	SKEL 340	330	L 37.81	B -	5.57	FORCE 13.5

RBCCT



Heifer

Final Live Weight At Home - 922 pounds

Hot Hanging Weight - 513 pounds

Weaned in January 2003

Weaning Weight - N/A

This heifer was fed on a grain pellet and hay for the first winter and pasture for the first summer. She was finished on a ground grain mixture and grass hay for 116 days.

# 2004 REALITY BASED CARCASS CLASS



LIVE BUFFALO WEIGHT	CARCASS WEIGHT	PER LB. VALUE	CARCASS VALUE
	513	\$2.38	\$1,220.94
			<b>% OF TOTAL VALUE</b>
<b>MIDDLE BUFFALO VALUE</b> (NY STRIP, TOP SIRLOIN BUTT, TENDERLOIN, RIB-EYE)		\$664.65	54.44%
<b>BUFFALO CHUCK VALUE</b> (SHOULDER CLOD, INSIDE CHUCK ROLL, BRISKET)		\$234.69	19.22%
<b>BUFFALO ROUND VALUE</b> (PELLED KNUCKLE, TOP ROUND, FLAT, EYE OF ROUND)		\$363.01	29.73%
<b>BUFFALO THIN MEATS</b> (TRI-TIP, BALL-TIP, FLANK STEAK, BBQ RIB, SKIRT)		\$64.97	5.32%
<b>BUFFALO TRIM 86%</b>		\$363.09	29.74%
		<b>TOTAL VALUE</b>	<b>% MARK-UP</b>
		\$1,690.41	138.45%

WASTE ITEMS	LBS	% CARCASS WEIGHT
FAT & KIDNEY		%
BONES		%

LENGTH (SANDY RATIO)	LENGTH:WEIGHT RATIO
ROUND CIRCUMFERENCE	ROUND CIRCUMFERENCE:WEIGHT RATIO
HUMP DEPTH	HUMP:WEIGHT RATIO

ANIMAL	SEX	YEILD	GRADE	HCW	REA	KPH	YGM	YGA	LEAN	MAT	MARB	LEAN	FAT	PH	SHEAR
	HFR	0.68	0.36	513	8.7	2.0	3.8	3.0	150	160	300	37.42	-	5.58	9.6

RBCCA



Heifer

Final Live Weight At Home - 1,054 pounds

Hot Hanging Weight - 605 pounds

Weaned on 12/10/01

Weaning Weight - 460 pounds

This heifer was fed hay and oats for the first winter and was on pasture for the first summer. She was finished on native grass, hay and oats for 60 days. This heifer's mother weighed 1,200 pounds.

# 2004 REALITY BASED CARCASS CLASS



LIVE BUFFALO WEIGHT	CARCASS WEIGHT	PER LB. VALUE	CARCASS VALUE
	605	\$2.38	\$1,439.90
			% OF TOTAL VALUE
<b>MIDDLE BUFFALO VALUE</b> (NY STRIP, TOP SIRLOIN BUTT, TENDERLOIN, RIB-EYE)		\$768.44	53.37%
<b>BUFFALO CHUCK VALUE</b> (SHOULDER CLOD, INSIDE CHUCK ROLL, BRISKET)		\$272.45	18.92%
<b>BUFFALO ROUND VALUE</b> (PELLED KNUCKLE, TOP ROUND, FLAT, EYE OF ROUND)		\$441.36	30.65%
<b>BUFFALO THIN MEATS</b> (TRI-TIP, BALL-TIP, FLANK STEAK, BBQ RIB, SKIRT)		\$75.65	5.25%
<b>BUFFALO TRIM</b> 86%		\$417.69	29.01%
		<b>TOTAL VALUE</b>	<b>% MARK-UP</b>
		\$1,975.69	137.20%

WASTE ITEMS	LBS	% CARCASS WEIGHT
FAT & KIDNEY		%
BONES		%

LENGTH (SANDY RATIO)	LENGTH:WEIGHT RATIO
ROUND CIRCUMFERENCE	ROUND CIRCUMFERENCE:WEIGHT RATIO
HUMP DEPTH	HUMP:WEIGHT RATIO

ANIMAL	SEX	YEILD	GRADE	HCW	REA	KPH	YGM	YGA	LEAN	MAT	SKEL	MARB	LEAN	FAT	PH	SHEAR
	HFR	MFAT	AFAT										L	B		FORCE
		1.32	0.44	605	10.7	1.5	5.0	2.8	390		510	280	35.46	-	5.62	10.6

RBCCL



Heifer

Final Live Weight At Home - 960 pounds

Hot Hanging Weight - 572 pounds

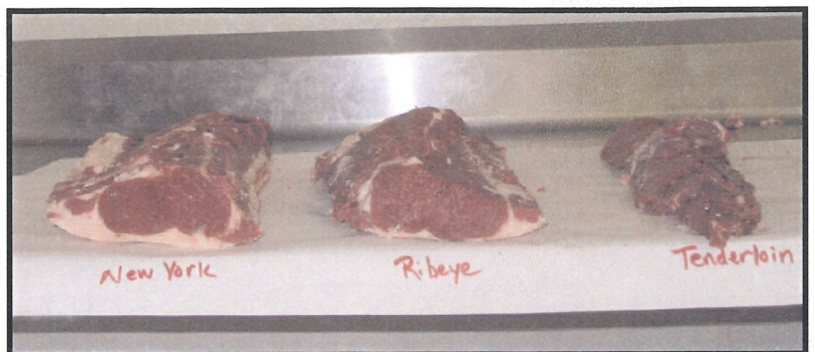
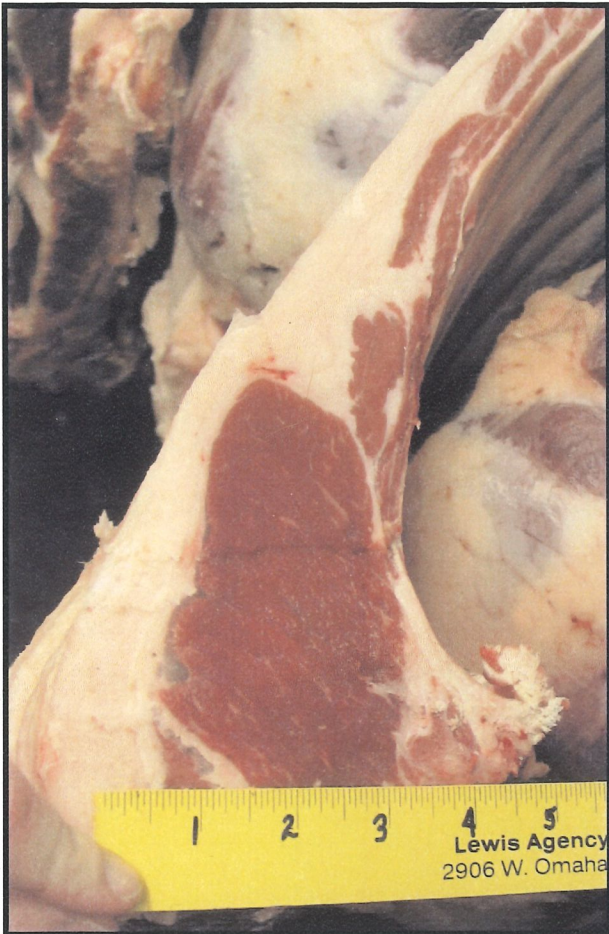
Weaned on 12/15/02

Weaning Weight - 425 pounds

This heifer was on free choice grass hay and wheat screenings for the first winter and into the first summer. She was put on finish feed on August 1, 2003 through January 4, 2004 and this consisted of 1/4 corn and 3/4 wheat screenings and free choice hay.



# 2004 REALITY BASED CARCASS CLASS



LIVE BUFFALO WEIGHT	CARCASS WEIGHT	PER LB. VALUE	CARCASS VALUE
	572	\$2.38	\$1,361.36
			% OF TOTAL VALUE
<b>MIDDLE BUFFALO VALUE</b> (NY STRIP, TOP SIRLOIN BUTT, TENDERLOIN, RIB-EYE)		\$681.93	50.09%
<b>BUFFALO CHUCK VALUE</b> (SHOULDER CLOD, INSIDE CHUCK ROLL, BRISKET)		\$272.97	20.05%
<b>BUFFALO ROUND VALUE</b> (PELLED KNUCKLE, TOP ROUND, FLAT, EYE OF ROUND)		\$412.44	30.30%
<b>BUFFALO THIN MEATS</b> (TRI-TIP, BALL-TIP, FLANK STEAK, BBQ RIB, SKIRT)		\$66.66	4.90%
<b>BUFFALO TRIM</b> 86%		\$421.96	31.00%
		<b>TOTAL VALUE</b>	<b>% MARK-UP</b>
		\$1,855.96	136.33%

WASTE ITEMS	LBS	% CARCASS WEIGHT
FAT & KIDNEY		%
BONES		%

LENGTH (SANDY RATIO)	LENGTH:WEIGHT RATIO
ROUND CIRCUMFERENCE	ROUND CIRCUMFERENCE:WEIGHT RATIO
HUMP DEPTH	HUMP:WEIGHT RATIO

ANIMAL	SEX	YEILD	GRADE	HCW	REA	KPH	YGM	YGA	LEAN	MAT	SKEL	MARB	LEAN	FAT	PH	SHEAR
	HFR	0.56	0.32	572	9.8	1.5	3.2	2.6	190		340	340	38.98	-	5.51	6.2

RBOCE

# 2004 REALITY BASED CARCASS CLASS

<b>LIVE BUFFALO WEIGHT</b>	<b>CARCASS WEIGHT</b> 514.15	<b>PER LB. VALUE</b> \$2.38	<b>CARCASS VALUE</b> \$1,223.68
			<b>% OF TOTAL VALUE</b>
<b>MIDDLE BUFFALO VALUE</b> <i>(NY STRIP, TOP SIRLOIN BUTT, TENDERLOIN, RIB-EYE)</i>		\$650.02	53.12%
<b>BUFFALO CHUCK VALUE</b> <i>(SHOULDER CLOD, INSIDE CHUCK ROLL, BRISKET)</i>		\$227.58	18.60%
<b>BUFFALO ROUND VALUE</b> <i>(PELLED KNUCKLE, TOP ROUND, FLAT, EYE OF ROUND)</i>		\$376.56	30.77%
<b>BUFFALO THIN MEATS</b> <i>(TRI-TIP, BALL-TIP, FLANK STEAK, BBQ RIB, SKIRT)</i>		\$65.48	5.35%
<b>BUFFALO TRIM</b> 86%		\$378.71	30.95%
		<b>TOTAL VALUE</b> \$1,698.35	<b>% MARK-UP</b> 138.79%

<b>WASTE ITEMS</b>	<b>LBS</b>	<b>% CARCASS WEIGHT</b>
<b>FAT &amp; KIDNEY</b>		%
<b>BONES</b>		%

<b>LENGTH (SANDY RATIO)</b>	<b>LENGTH:WEIGHT RATIO</b>
<b>ROUND CIRCUMFERENCE</b>	<b>ROUND CIRCUMFERENCE:WEIGHT RATIO</b>
<b>HUMP DEPTH</b>	<b>HUMP:WEIGHT RATIO</b>

<b>ANIMAL</b>	<b>SEX</b>	<b>YEILD</b>	<b>GRADE</b>	<b>HCW</b>	<b>REA</b>	<b>KPH</b>	<b>YGM</b>	<b>YGA</b>	<b>LEAN</b>	<b>MAT</b>	<b>SKEL</b>	<b>MARB</b>	<b>LEAN</b>	<b>FAT</b>	<b>PH</b>	<b>SHEAR</b>
2	HFR	0.76	0.33	519	10.0	1.6	3.5	2.4	202	264	304	37.48	-	5.55	9.1	

RBOCA