

Consignors entered in the 2004 Reality Based Carcass Class

Expedition Buffalo Company, Perry & Susan Handyside, Kremmling, CO
Blue Valley Ranch, manager Perry Handyside, Kremmling, CO
Nolz Poor Farm Bison, Ed & Deanna Nolz, Sioux Falls, SD
Beaver Creek Buffalo Co., Brad Beavers, Jefferson, SD
Prairie Rose Buffalo Ranch, Heath Peterson, Reville, SD
Rossow Buffalo Ranch, Lloyd & Clifford Rossow, Flasher, ND
Expedition Buffalo Company, Perry & Susan Handyside, Kremmling, CO
Jumpoff Buffalo Ranch, Scott & Susan Peterson, Belle Fourche, SD
Snyder Land & Development, Rex & Ronda Snyder, Lyman, WY
Indian Springs Bison, Roy & Cheryl Krivoruchka, Belfield, ND

BULLS

1st - Expedition Buffalo Company, Perry & Susan Handyside, Kremmling, CO
2nd - Beaver Creek Buffalo Co., Brad Beavers, Jefferson, SD
3rd - Nolz Poor Farm Bison, Ed & Deanna Nolz, Sioux Falls, SD

HEIFERS

1st - Beaver Creek Buffalo Co., Brad Beavers, Jefferson, SD
2nd - Blue Valley Ranch, manager Perry Handyside, Kremmling, CO
3rd - Nolz Poor Farm Bison, Ed & Deanna Nolz, Sioux Falls, SD

2004

Animal	Sex	Yield Grade		HCW	REA	KPH	YGM	YGA	MAT		Lean L	Fat B	pH	Shear Force
		MFAT	AFAT						LEAN	SKEL				
1	Bull	0.36	0.28	631	11.1	1.5	2.5	2.3	180	290	170	35.71	5.64	6.9
3	Bull	0.20	0.28	477	9.4	2.0	2.2	2.4	140	120	110	40.51	5.60	10.9
5	Bull	0.36	0.24	652	11.7	2.0	2.5	2.2	130	170	320	36.12	5.56	5.5
6	Bull	0.44	0.24	548	10.4	1.5	2.7	2.2	280	180	200	36.06	5.51	9.5
8	Bull	0.40	0.20	500	9.5	1.5	2.7	2.2	130	140	210	39.44	5.51	7.6
12	Bull	0.68	0.32	590	11.7	2.0	3.1	2.2	190	190	220	36.26	5.56	7.6
13	Bull	0.48	0.32	621	10.9	1.5	2.9	2.5	280	180	190	39.42	5.61	8.3
14	Bull	0.56	0.40	706	10.3	1.5	3.6	3.2	280	180	320	35.62	5.56	8.6
15	Bull	0.32	0.16	620	11.9	1.0	2.0	1.6	290	160	160	38.26	5.62	9.5
2	Hfr	1.32	0.44	605	10.7	1.5	5.0	2.8	390	510	280	35.46	5.62	10.6
7	Hfr	0.64	0.28	500	11.1	1.5	2.7	1.8	140	150	320	37.98	5.54	10.4
9	Hfr	0.60	0.24	404	9.6	1.5	2.8	1.9	140	160	280	37.55	5.50	8.5
10	Hfr	0.56	0.32	572	9.8	1.5	3.2	2.6	190	340	340	38.98	5.51	6.2
11	Hfr	0.68	0.36	513	8.7	2.0	3.8	3.0	150	160	300	37.42	5.58	9.6
4	Hfr(B)	0.64	0.28	420	8.9	1.5	3.1	2.2	150	190	270	36.58	5.62	9.4
16	Hfr(B)	0.56	0.40	585	10.3	1.5	3.1	2.7	160	340	330	37.81	5.57	13.5
Average		0.55	0.30	559	10.4	1.6	3.0	2.4	201	216	251	37.45	5.57	8.9
Bull Avg		0.42	0.27	594	10.8	1.6	2.7	2.3	211	179	211	37.49	5.57	8.3
Heifer Avg		0.71	0.33	514	9.9	1.6	3.4	2.4	189	264	303	37.40	5.56	9.7
Beef Average		0.48	0.49	787	13.1	2.3	2.9	3.0	165	167	423	39.5	5.50	8.0

2004 DTBA Carcass class

Placings

Bulls	1.	Green tag #208	Perry Handyside - Expedition Buffalo Co.
	2.	Blue tag #100	Brad Beavers
	3.	purple tag #40	Nolz
	4.	blue tag #244	Blue Valley Ranch
	5.	no tag XX	Lloyd Rossow
	6.	green tag #16	Scott Peterson
	7.	blue tag #41	Heath Peterson
	8.	yellow tag #120	Rex Snyder
	9.	no tag X	Roy K.

Heifers	1.	blue tag #23	Brad Beavers
	2.	blue tag #261	Blue Valley Ranch
	3.	blue tag #3	Ed Nolz
	4.	blue tag #19	Lloyd Rossow
	5.	white tag #2211	Scott Peterson
	6.	white tag #9	Rex Snyder
	7.	Red tag #92	Heath Peterson



Bull

Final Live Weight At Home - 1,020 pounds

Hot Hanging Weight - 548 pounds

Weaned on 11/15/02

Weaning Weight - 538 pounds

This bull was fed two pounds per day of ground corn and free choice grass hay for the first winter. He was turned out to pasture for 150 and then put on finish feed for 120 days. The finish feed consisted of ground corn, alfalfa and grass hay. He was fed 16 pounds per day of the ground corn.

2004 REALITY BASED CARCASS CLASS



LIVE BUFFALO WEIGHT	CARCASS WEIGHT	PER LB. VALUE	CARCASS VALUE
	548	\$2.38	\$1,304.24
			% OF TOTAL VALUE
MIDDLE BUFFALO VALUE (NY STRIP, TOP SIRLOIN BUTT, TENDERLOIN, RIB-EYE)		\$694.64	53.26%
BUFFALO CHUCK VALUE (SHOULDER CLOD, INSIDE CHUCK ROLL, BRISKET)		\$259.01	19.86%
BUFFALO ROUND VALUE (PELLED KNUCKLE, TOP ROUND, FLAT, EYE OF ROUND)		\$401.72	30.80%
BUFFALO THIN MEATS (TRI-TIP, BALL-TIP, FLANK STEAK, BBQ RIB, SKIRT)		\$81.52	6.25%
BUFFALO TRIM 86%		\$417.69	32.03%
		TOTAL VALUE	% MARK-UP
		\$1,854.58	142.20%

WASTE ITEMS	LBS	% CARCASS WEIGHT
FAT & KIDNEY		%
BONES		%

LENGTH (SANDY RATIO)	LENGTH:WEIGHT RATIO
ROUND CIRCUMFERENCE	ROUND CIRCUMFERENCE:WEIGHT RATIO
HUMP DEPTH	HUMP:WEIGHT RATIO

ANIMAL	SEX	YEILD	GRADE	HCW	REA	KPH	YGM	YGA	LEAN	MAT	SKEL	MARB	LEAN	FAT	PH	SHEAR
	BULL	0.44	0.24	548	10.4	1.5	2.7	2.2	280		180	200	36.06	-	5.51	9.5



Bull

Final Live Weight At Home - 916 pounds

Hot Hanging Weight - 500 pounds

Weaned on 10/26/02

Weaning Weight - 423 pounds

This bull was fed on cornstalks, brome hay and mixed hay for the first winter and pasture for the first summer. He was fed out on cracked corn for 90 to 95 days, along with cornstalks, brome hay and mixed hay.

2004 REALITY BASED CARCASS CLASS



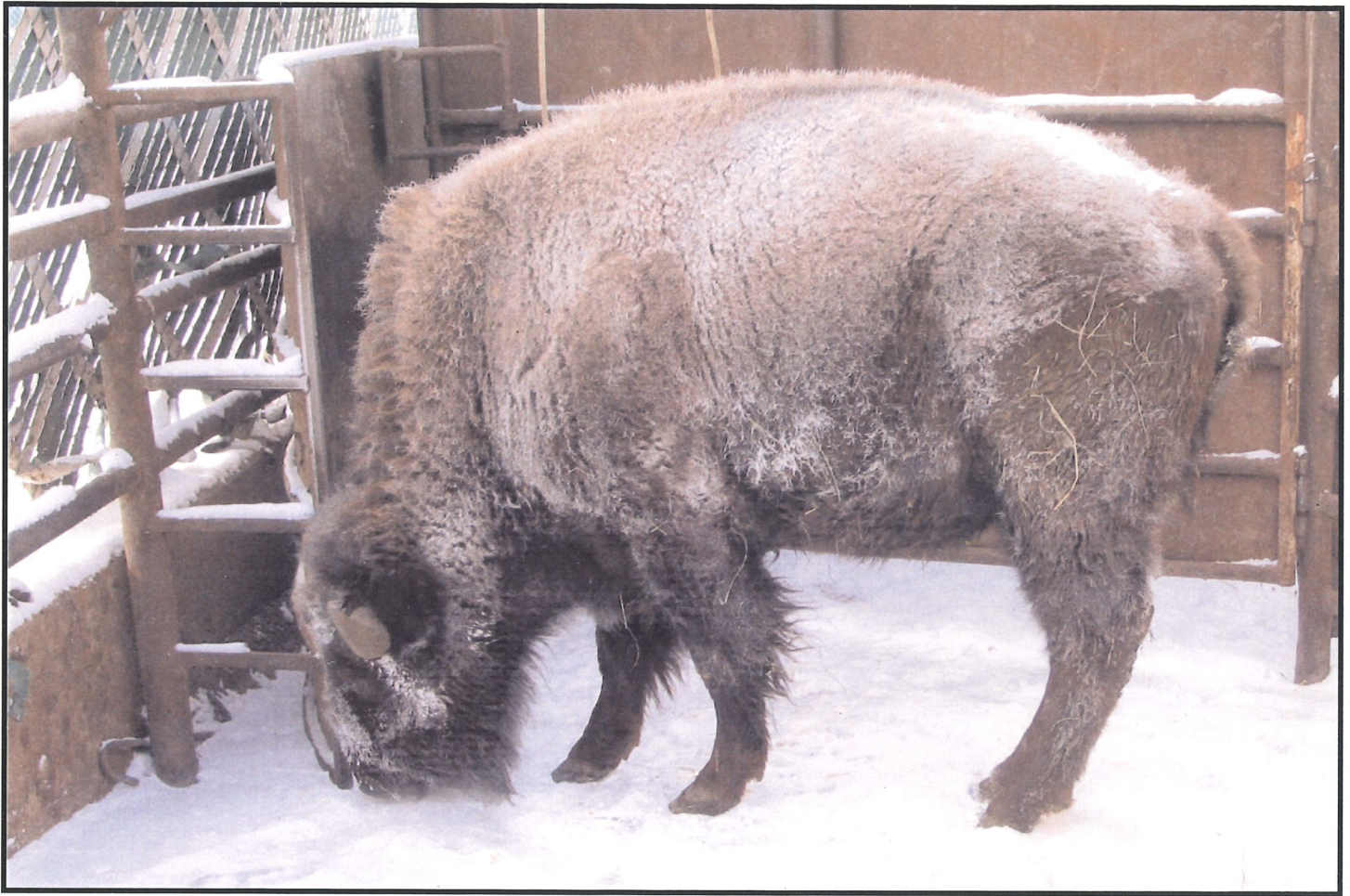
LIVE BUFFALO WEIGHT	CARCASS WEIGHT	PER LB. VALUE	CARCASS VALUE	
	500	\$2.38	\$1,190.00	
			% OF TOTAL VALUE	
MIDDLE BUFFALO VALUE (NY STRIP, TOP SIRLOIN BUTT, TENDERLOIN, RIB-EYE)		\$626.06	52.61%	
BUFFALO CHUCK VALUE (SHOULDER CLOD, INSIDE CHUCK ROLL, BRISKET)		\$225.55	18.95%	
BUFFALO ROUND VALUE (PELLED KNUCKLE, TOP ROUND, FLAT, EYE OF ROUND)		\$398.02	33.45%	
BUFFALO THIN MEATS (TRI-TIP, BALL-TIP, FLANK STEAK, BBQ RIB, SKIRT)		\$64.58	5.43%	
BUFFALO TRIM 86%		\$360.36	30.28%	
		TOTAL VALUE	% MARK-UP	
		\$1,674.57	140.72%	

WASTE ITEMS	LBS	% CARCASS WEIGHT
FAT & KIDNEY		%
BONES		%

LENGTH (SANDY RATIO)	LENGTH:WEIGHT RATIO
ROUND CIRCUMFERENCE	ROUND CIRCUMFERENCE:WEIGHT RATIO
HUMP DEPTH	HUMP:WEIGHT RATIO

ANIMAL	SEX	YEILD	GRADE	HCW	REA	KPH	YGM	YGA	LEAN	MAT	SKEL	MARB	LEAN	FAT	PH	SHEAR
	BULL	0.40	0.20	500	9.5	1.5	2.7	2.2	130		140	210	39.44	-	5.51	7.6

RBCCI



Bull

Final Live Weight At Home - 940 pounds

Hot Hanging Weight - 477 pounds

Weaned on: January 2003

Weaning Weight - 574 pounds

This bull was fed hay and grain for the first winter and first summer. He was finished on a hay and corn/oat grain ration, four to five pounds per day for 300 days.

2004 REALITY BASED CARCASS CLASS



LIVE BUFFALO WEIGHT	CARCASS WEIGHT	PER LB. VALUE	CARCASS VALUE	
	477	\$2.38	\$1,135.26	
			% OF TOTAL VALUE	
MIDDLE BUFFALO VALUE (NY STRIP, TOP SIRLOIN BUTT, TENDERLOIN, RIB-EYE)		\$602.13	53.04%	
BUFFALO CHUCK VALUE (SHOULDER CLOD, INSIDE CHUCK ROLL, BRISKET)		\$213.20	18.78%	
BUFFALO ROUND VALUE (PELLED KNUCKLE, TOP ROUND, FLAT, EYE OF ROUND)		\$332.99	29.33%	
BUFFALO THIN MEATS (TRI-TIP, BALL-TIP, FLANK STEAK, BBQ RIB, SKIRT)		\$65.95	5.81%	
BUFFALO TRIM 86%		\$380.86	33.55%	
		TOTAL VALUE	% MARK-UP	
		\$1,595.13	140.51%	

WASTE ITEMS	LBS	% CARCASS WEIGHT
BONES		%

LENGTH (SANDY RATIO)	LENGTH:WEIGHT RATIO
ROUND CIRCUMFERENCE	ROUND CIRCUMFERENCE:WEIGHT RATIO
HUMP DEPTH	HUMP:WEIGHT RATIO

ANIMAL	SEX	YEILD	GRADE	HCW	REA	KPH	YGM	YGA	LEAN	MAT	SKEL	MARB	LEAN	FAT	PH	SHEAR
	BULL	0.20	0.28	477	9.4	2.0	2.2	2.4	140		120	110	40.51	-	5.60	10.9



Bull

Final Live Weight At Home, 1,180 pounds

Hot Hanging Weight - 652 pounds

Weaned on 11/15/02

Weaning Weight - 538 pounds

This bull was fed two pounds per day of ground corn and free choice grass hay for the first winter. He was turned out to pasture for 150 and then put on finish feed for 120 days. The finish feed consisted of ground corn, alfalfa and grass hay. He was fed 16 pounds per day of the ground corn.

2004 REALITY BASED CARCASS CLASS



LIVE BUFFALO WEIGHT	CARCASS WEIGHT	PER LB. VALUE	CARCASS VALUE	
	652	\$2.38	\$1,551.76	
			% OF TOTAL VALUE	
MIDDLE BUFFALO VALUE (NY STRIP, TOP SIRLOIN BUTT, TENDERLOIN, RIB-EYE)		\$848.48	54.68%	
BUFFALO CHUCK VALUE (SHOULDER CLOD, INSIDE CHUCK ROLL, BRISKET)		\$312.62	20.15%	
BUFFALO ROUND VALUE (PELLED KNUCKLE, TOP ROUND, FLAT, EYE OF ROUND)		\$446.74	28.79%	
BUFFALO THIN MEATS (TRI-TIP, BALL-TIP, FLANK STEAK, BBQ RIB, SKIRT)		\$81.95	5.28%	
BUFFALO TRIM 86%		\$485.76	31.30%	
		TOTAL VALUE	% MARK-UP	
		\$2,175.55	140.20%	

WASTE ITEMS	LBS	% CARCASS WEIGHT
FAT & KIDNEY		%
BONES		%

LENGTH (SANDY RATIO)	LENGTH:WEIGHT RATIO
ROUND CIRCUMFERENCE	ROUND CIRCUMFERENCE:WEIGHT RATIO
HUMP DEPTH	HUMP:WEIGHT RATIO

ANIMAL	SEX	YEILD	GRADE	HCW	REA	KPH	YGM	YGA	LEAN	MAT	MARB	LEAN	FAT	PH	SHEAR
	BULL	MFAT	AFAT							SKEL		L	B		FORCE
		0.36	0.24	652	11.7	2.0	2.5	2.2	130	170	320	36.12	-	5.56	5.5

RBCCF



Bull

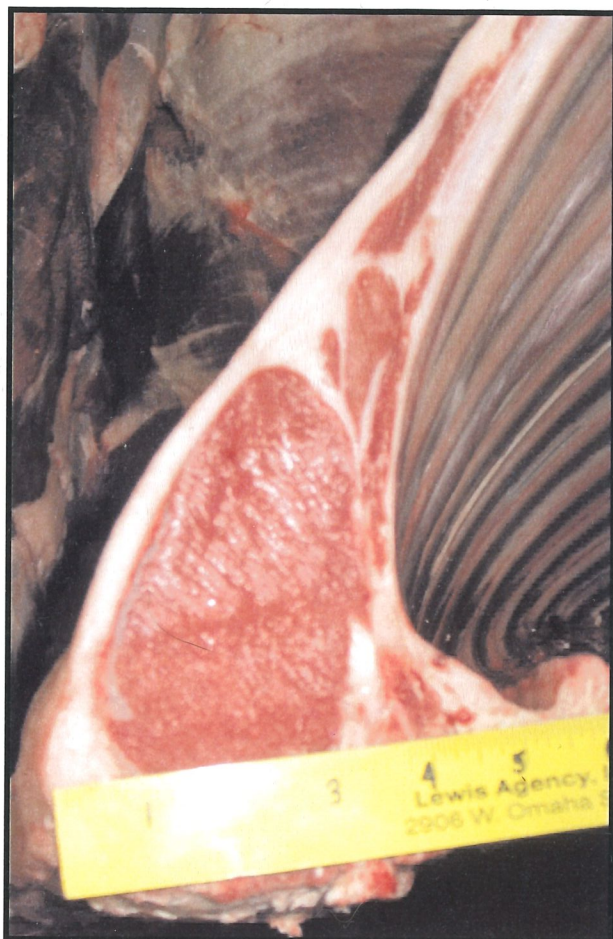
Final Live Weight At Home, n/a
Hot Hanging Weight - 620 pounds

Weaned on 12/3/03

Weaning Weight - 495 pounds

This bull was put on a self-feeder for hay and 3/4 wheat screenings and 1/4 corn pellets for the first winter and summer. On Sept. 1, 2003, he was put on rolled 1/2 corn, 40 percent oats and 10 percent wheat. He was finished on brome and crested wheat hay and a grain mixture of 50 percent corn, 40 percent oats, 10 percent wheat and minerals.

2004 REALITY BASED CARCASS CLASS



LIVE BUFFALO WEIGHT	CARCASS WEIGHT	PER LB. VALUE	CARCASS VALUE	
	620	\$2.38	\$1,475.60	
			% OF TOTAL VALUE	
MIDDLE BUFFALO VALUE (NY STRIP, TOP SIRLOIN BUTT, TENDERLOIN, RIB-EYE)		\$781.75	52.98%	
BUFFALO CHUCK VALUE (SHOULDER CLOD, INSIDE CHUCK ROLL, BRISKET)		\$280.56	19.01%	
BUFFALO ROUND VALUE (PELLED KNUCKLE, TOP ROUND, FLAT, EYE OF ROUND)		\$436.07	29.55%	
BUFFALO THIN MEATS (TRI-TIP, BALL-TIP, FLANK STEAK, BBQ RIB, SKIRT)		\$85.89	5.82%	
BUFFALO TRIM 87%		\$468.54	31.75%	
		TOTAL VALUE	% MARK-UP	
		\$2,052.81	139.12%	

WASTE ITEMS	LBS	% CARCASS WEIGHT
FAT & KIDNEY		%
BONES		%

LENGTH (SANDY RATIO)	LENGTH:WEIGHT RATIO
ROUND CIRCUMFERENCE	ROUND CIRCUMFERENCE:WEIGHT RATIO
HUMP DEPTH	HUMP:WEIGHT RATIO

ANIMAL	SEX	YEILD	GRADE	HCW	REA	KPH	YGM	YGA	LEAN	MAT	SKEL	MARB	LEAN	FAT	PH	SHEAR
	BULL	0.32	0.16	620	11.9	1.0	2.0	1.6	290		160	160	38.26	-	5.62	9.5

RBOCH



Bull

C

Final Live Weight At Home - 1,075 pounds
Hot Hanging Weight - 621 pounds

Weaned January 2003

Weaning Weight - N/A

This bull was feed a grain mixture with free choice hay the first winter and in a drylot with grass hay for the first summer. He was finished on ground grain with grass hay for 165 days.

2004 REALITY BASED CARCASS CLASS



LIVE BUFFALO WEIGHT	CARCASS WEIGHT	PER LB. VALUE	CARCASS VALUE
	621	\$2.38	\$1,477.98
			% OF TOTAL VALUE
MIDDLE BUFFALO VALUE (NY STRIP, TOP SIRLOIN BUTT, TENDERLOIN, RIB-EYE)		\$770.00	52.10%
BUFFALO CHUCK VALUE (SHOULDER CLOD, INSIDE CHUCK ROLL, BRISKET)		\$265.47	17.96%
BUFFALO ROUND VALUE (PELLED KNUCKLE, TOP ROUND, FLAT, EYE OF ROUND)		\$441.15	29.85%
BUFFALO THIN MEATS (TRI-TIP, BALL-TIP, FLANK STEAK, BBQ RIB, SKIRT)		\$84.24	5.70%
BUFFALO TRIM 86%		\$475.02	32.14%
		TOTAL VALUE	% MARK-UP
		\$2,035.88	137.75%

WASTE ITEMS	LBS	% CARCASS WEIGHT
FAT & KIDNEY		%
BONES		%

LENGTH (SANDY RATIO)	LENGTH:WEIGHT RATIO
ROUND CIRCUMFERENCE	ROUND CIRCUMFERENCE:WEIGHT RATIO
HUMP DEPTH	HUMP:WEIGHT RATIO

ANIMAL	SEX	YEILD	GRADE	HCW	REA	KPH	YGM	YGA	LEAN	MAT	SKEL	MARB	LEAN	FAT	PH	SHEAR
	BULL	0.48	0.32	621	10.9	1.5	2.9	2.5	280		180	190	39.42	-	5.61	8.3

RBCCK



Bull

C

Final Live Weight At Home - 1,127 pounds

Hot Hanging Weight - 590 pounds

Weaned on 12/15/03

Weaning Weight - 475 pounds

This bull was fed wheat screenings and free choice hay for the first winter and the first summer. He was put on a finish ration on August 1, 2003 through January 4, 2004. The finish feed consisted of grass and a mixture of 1/4 corn and 3/4 screenings along with hay in a self-feeder.

2004 REALITY BASED CARCASS CLASS



LIVE BUFFALO WEIGHT	CARCASS WEIGHT	PER LB. VALUE	CARCASS VALUE	
	590	\$2.38	\$1,404.20	
			% OF TOTAL VALUE	
MIDDLE BUFFALO VALUE (NY STRIP, TOP SIRLOIN BUTT, TENDERLOIN, RIB-EYE)		\$738.55	52.60%	
BUFFALO CHUCK VALUE (SHOULDER CLOD, INSIDE CHUCK ROLL, BRISKET)		\$282.99	20.15%	
BUFFALO ROUND VALUE (PELLED KNUCKLE, TOP ROUND, FLAT, EYE OF ROUND)		\$411.11	29.28%	
BUFFALO THIN MEATS (TRI-TIP, BALL-TIP, FLANK STEAK, BBQ RIB, SKIRT)		\$79.59	5.67%	
BUFFALO TRIM 86%		\$415.80	29.61%	
		TOTAL VALUE	% MARK-UP	
		\$1,928.04	137.31%	

WASTE ITEMS	LBS	% CARCASS WEIGHT
FAT & KIDNEY		%
BONES		%

LENGTH (SANDY RATIO)	LENGTH:WEIGHT RATIO
ROUND CIRCUMFERENCE	ROUND CIRCUMFERENCE:WEIGHT RATIO
HUMP DEPTH	HUMP:WEIGHT RATIO

ANIMAL	SEX	YEILD	GRADE	HCW	REA	KPH	YGM	YGA	LEAN	MAT	SKEL	MARB	LEAN	FAT	PH	SHEAR
	BULL	MFAT	AFAT	590	11.7	2.0	3.1	2.2	190		190	220	L	B	5.56	FORCE
		0.68	0.32										36.26	-		7.6

RBCCM



Bull

Final Live Weight At Home - 1,100 pounds

Hot Hanging Weight - 631 pounds

Weaned on 12/03/02

Weaning Weight - 490 pounds

The calf was fed hay and oats for the first winter and pasture for the first summer. The animal was finished on native grass, hay and oats for 60 days. This bull's mother weighed 1,250 pounds.

2004 REALITY BASED CARCASS CLASS



LIVE BUFFALO WEIGHT	CARCASS WEIGHT	PER LB. VALUE	CARCASS VALUE
	631	\$2.38	\$1,501.78
			% OF TOTAL VALUE
MIDDLE BUFFALO VALUE (NY STRIP, TOP SIRLOIN BUTT, TENDERLOIN, RIB-EYE)		\$781.75	52.05%
BUFFALO CHUCK VALUE (SHOULDER CLOD, INSIDE CHUCK ROLL, BRISKET)		\$280.56	18.68%
BUFFALO ROUND VALUE (PELLED KNUCKLE, TOP ROUND, FLAT, EYE OF ROUND)		\$436.07	29.04%
BUFFALO THIN MEATS (TRI-TIP, BALL-TIP, FLANK STEAK, BBQ RIB, SKIRT)		\$85.89	5.72%
BUFFALO TRIM 87%		\$468.54	31.20%
		TOTAL VALUE	% MARK-UP
		\$2,052.81	136.69%

WASTE ITEMS	LBS	% CARCASS WEIGHT
FAT & KIDNEY		%
BONES		%

LENGTH (SANDY RATIO)	LENGTH:WEIGHT RATIO
ROUND CIRCUMFERENCE	ROUND CIRCUMFERENCE:WEIGHT RATIO
HUMP DEPTH	HUMP:WEIGHT RATIO

														RBCCA		
ANIMAL	SEX	YEILD	GRADE	HCW	REA	KPH	YGM	YGA	LEAN	MAT	SKEL	MARB	LEAN	FAT	PH	SHEAR
		MFAT	AFAT										L	B		FORCE
	BULL	0.36	0.28	631	11.1	1.5	2.5	2.3	180	290	170		35.71	-	5.64	6.9



Bull

C

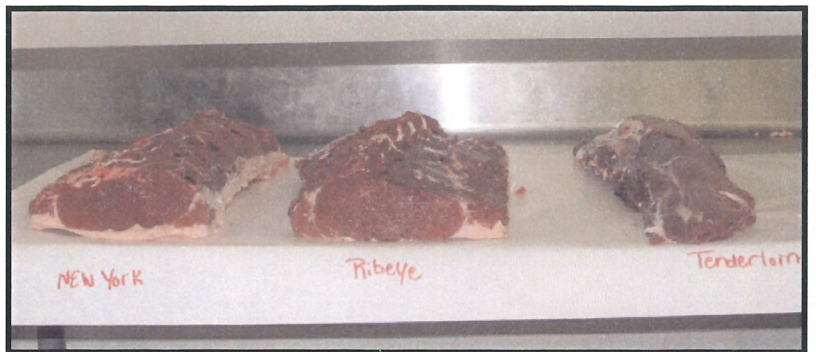
Final Live Weight At Home, 1/4/04 was 1,150 pounds
Hot Hanging Weight - 706 pounds

Weaned in December 2002

Weaning Weight - 430 pounds

The calf was fed ground corn and CRP hay for the first winter and first summer, along with a high calcium mineral protein boost to 16 percent. The bull was finished on cracked corn and CRP hay with a high calcium mineral with protein boost from 12 to 14 percent. The bull's mother weighed approximately 1,100 pounds.

2004 REALITY BASED CARCASS CLASS



LIVE BUFFALO WEIGHT	CARCASS WEIGHT	PER LB. VALUE	CARCASS VALUE
	706	\$2.38	\$1,680.28
			% OF TOTAL VALUE
MIDDLE BUFFALO VALUE (NY STRIP, TOP SIRLOIN BUTT, TENDERLOIN, RIB-EYE)		\$869.68	51.76%
BUFFALO CHUCK VALUE (SHOULDER CLOD, INSIDE CHUCK ROLL, BRISKET)		\$322.95	19.22%
BUFFALO ROUND VALUE (PELLED KNUCKLE, TOP ROUND, FLAT, EYE OF ROUND)		\$477.14	28.40%
BUFFALO THIN MEATS (TRI-TIP, BALL-TIP, FLANK STEAK, BBQ RIB, SKIRT)		\$89.18	5.31%
BUFFALO TRIM 87%		\$512.38	30.49%
		TOTAL VALUE	% MARK-UP
		\$2,271.33	135.18%

WASTE ITEMS	LBS	% CARCASS WEIGHT
FAT & KIDNEY		%
BONES		%

LENGTH (SANDY RATIO)	LENGTH:WEIGHT RATIO
ROUND CIRCUMFERENCE	ROUND CIRCUMFERENCE:WEIGHT RATIO
HUMP DEPTH	HUMP:WEIGHT RATIO

ANIMAL		YEILD GRADE		HCW	REA	KPH	YGM	YGA	MAT		LEAN	FAT	PH	SHEAR
SEX	BULL	MFAT	AFAT	706	10.3	1.5	3.6	3.2	LEAN	SKEL	MARB	L	B	FORCE
		0.56	0.40						280	180	320	35.62	-	8.6

RBCC

2004 REALITY BASED CARCASS CLASS

LIVE BUFFALO WEIGHT	CARCASS WEIGHT 593.89	PER LB. VALUE \$2.38	CARCASS VALUE \$1,413.46
			% OF TOTAL VALUE
MIDDLE BUFFALO VALUE <i>(NY STRIP, TOP SIRLOIN BUTT, TENDERLOIN, RIB-EYE)</i>		\$750.42	53.09%
BUFFALO CHUCK VALUE <i>(SHOULDER CLOD, INSIDE CHUCK ROLL, BRISKET)</i>		\$273.62	19.36%
BUFFALO ROUND VALUE <i>(PELLED KNUCKLE, TOP ROUND, FLAT, EYE OF ROUND)</i>		\$423.74	29.98%
BUFFALO THIN MEATS <i>(TRI-TIP, BALL-TIP, FLANK STEAK, BBQ RIB, SKIRT)</i>		\$79.86	5.65%
BUFFALO TRIM 86%		\$440.54	31.17%
		TOTAL VALUE \$1,968.18	% MARK-UP 139.25%

WASTE ITEMS	LBS	% CARCASS WEIGHT
FAT & KIDNEY		%
BONES		%

LENGTH <i>(SANDY RATIO)</i>	LENGTH:WEIGHT RATIO
ROUND CIRCUMFERENCE	ROUND CIRCUMFERENCE:WEIGHT RATIO
HUMP DEPTH	HUMP:WEIGHT RATIO

ANIMAL	SEX	YEILD GRADE		HCW	REA	KPH	YGM	YGA	MAT		LEAN L	FAT B	PH	SHEAR FORCE	
AVERAGE BULL		MFAT	AFAT	577	10.6	1.6	2.8	2.3	LEAN	SKEL	MARB	37.44	-	5.58	8.8

RBCCA