

## DTBA 2002 Reality Based Carcass Class *Program Details*

The Dakota Territory Buffalo Association (DTBA) held the second Reality Based Carcass Class in conjunction with the 2002 Black Hills Buffalo Classic Show and Sale. Last year, the carcass class offered another dimension to the DTBA's already successful live animal show and sale. Through this new class, the association has been able to focus on and give attention to the driving force of the buffalo industry, quality meat production.

Buffalo ranchers produce some of the healthiest, most appetizing red meat in the world and consumers can and will continue to demand this meat product. With that in mind, the DTBA decided to again host a carcass class that will help to educate producers on the economic benefits of taking their bull calves all the way to slaughter weight. Additionally, for the first time ever in the buffalo industry, the DTBA opened up the contest to heifers. With the addition of 10 available spots for heifers, this contest will mark the first time any data has ever been recorded on slaughter heifers. A total of 20 entries were accepted, 10 each of bulls and heifers. Trophies will awarded for the first three places. There will also be a \$5,000 cash prize for the first place carcass in the bulls and another \$5,000 cash award for the highest placing female carcass.

The success of last year's contest was partly due to the unique nature of it. About a year and a half ago, Buffalo, SD producer, Sandy Limpert, approached Bruce Anderson of RC Western Meats in Rapid City, SD. What Limpert was suggesting was to do a carcass contest, but with a different twist. He wanted to have the contest winner determined based on the retail value of the meat the animal was able to put in the box. This is an idea that Limpert has been kicking around for a number of years and has been fine-tuning the details. Having been told it couldn't be done, that just spurred him on to find a way to do it. When he approached Anderson, Anderson was intrigued with the idea and also, being a large regional bison meat purveyor, wanted to know the results for his own personal experience. After much discussion and lots of fine tuning, the Dakota Territory Buffalo Association (DTBA) was the official host of the new Reality-Based Carcass Class.

The contest idea is simple. After the animals are delivered and a live weight obtained, they are then slaughtered. A hot hanging weight is recorded. After hanging in the cooler for a set amount of time, the carcasses are halved and then quartered. Under the watchful eye of an independent party, in this case, Dr. Robert Maddock of South Dakota State University, the meat is trimmed to a quarter inch of fat cover. All the fat that was trimmed off is weighed. Each cut is then weighed with a consistent, current value per pound put on them. The remaining bones, minus the trimmed off meat, are also weighed. A sample of burger from each carcass is cooked and the fat content measured. Anderson has developed a sliding scale in which to base value of the burger on its percentage of lean meat, meaning the leaner the meat, the more it was worth per pound.

Upon the completion of the contest, a sheet is made for each entry. It contains data such as the carcass weight, the carcass value, the middle value, the chuck value, the round value, the thin meats value and the trim. It also contains the waste items, including the fat and kidney and the bones. The winner is determined by the highest percentage of growth from the carcass value to the retail value.

So, what is accomplished by this reality-based contest? Limpert hopes that the data recorded and provided to the producers will help them understand their feeding program and how it affects the final product. From Anderson's point of view, it helps producers know what kind of animal will make the packer and the producer the most money. Over time, the records kept from this type of contest will help producers make genetic and production decisions that will help their yields and produce an efficient product. When the data from the first contest was released to the public, there were many calls to the association noting that this industry first had done it's job in generating the beginning of a new database for buffalo meat producers.

Producers who entered the contest this year were asked to provide as much background data as possible on their animal, including genetic history, growth progress, feeding program, traveling information, nearly anything that might be recordable. Once again, photographs of the live animals were taken and photographs were taken throughout the entire process to record each entry and help producers and consumers to better understand the value of the meat they produce and consume.

Consignors entered in the 2003 Reality Based Carcass Class

Blue Valley Ranch, manager Perry Handyside, Kremmling, CO  
Rx KenMar Ranch, Dr. Ken and Marlys Throlson, New Rockford, ND  
Slim Buttes Buffalo Ranch, Sandy & Jacki Limpert, Buffalo, SD  
Nolz Poor Farm Bison, Ed & Deanna Nolz, Sioux Falls, SD  
Beaver Creek Buffalo Co., Brad Beavers, Jefferson, SD  
Prairie Rose Buffalo Ranch, Heath Peterson, Revillo, SD  
Sexhus/Kakela Bison Ranch, Dennis & Sue Sexhus/Keith & Susan Kakela, Leeds, ND  
Rossow Buffalo Ranch, Lloyd & Clifford Rossow, Flasher, ND  
Rocking R Bison Ltd., Larry & Linda Rolfstad, Rapid City, SD  
Expedition Buffalo Company, Perry & Susan Handyside, Kremmling, CO  
Buffalo Dance Bison, Casey Byrd, Presho, SD

**BULLS**

1st - Rossow Buffalo Ranch, Lloyd & Clifford Rossow, Flasher, ND  
2nd - Nolz Poor Farm Bison, Ed & Deanna Nolz, Sioux Falls, SD  
3rd - Sexhus/Kakela Bison Ranch, Dennis & Sue Sexhus/Keith & Susan Kakela, Leeds, ND

**HEIFERS**

1st - Rx KenMar Ranch, Dr. Ken and Marlys Throlson, New Rockford, ND  
2nd - Rossow Buffalo Ranch, Lloyd & Clifford Rossow, Flasher, ND  
3rd - Prairie Rose Buffalo Ranch, Heath Peterson, Revillo, SD

|              |      | Yield Grade |      |     |      |     |     |     |      |      |      | MAT  |      |      |       | Lean |  | Fat |  | Shear |
|--------------|------|-------------|------|-----|------|-----|-----|-----|------|------|------|------|------|------|-------|------|--|-----|--|-------|
|              |      | MFAT        | AFAT | HCW | REA  | KPH | YGM | YGA | LEAN | SKEL | MARB | L    | B    | pH   | Force |      |  |     |  |       |
| Animal       | Sex  |             |      |     |      |     |     |     |      |      |      |      |      |      |       |      |  |     |  |       |
| 2            | Bull | 0.32        | 0.24 | 731 | 11.2 | 0.5 | 2.6 | 2.4 | 170  | 210  | 370  | 37.4 | 14.0 | 5.51 | 8.7   |      |  |     |  |       |
| 3            | Bull | 0.36        | 0.20 | 718 | 11.7 | 0.5 | 2.5 | 2.1 | 220  | 190  | 320  | 37.2 | 15.1 | 5.41 | 6.1   |      |  |     |  |       |
| 4            | Bull | 0.40        | 0.28 | 730 | 13.0 | 1.5 | 2.4 | 2.1 | 190  | 170  | 370  | 35.7 | 15.6 | 5.53 | 8.1   |      |  |     |  |       |
| 7            | Bull | 0.52        | 0.40 | 653 | 9.1  | 0.5 | 3.5 | 3.2 | 170  | 180  | 380  | 38.0 | 16.9 | 5.57 | 7.6   |      |  |     |  |       |
| 8            | Bull | 0.40        | 0.32 | 618 | 10.2 | 0.5 | 2.7 | 2.5 | 180  | 180  | 330  | 37.5 | 17.5 | 5.56 | 7.6   |      |  |     |  |       |
| 11           | Bull | 0.12        | 0.12 | 541 | 8.8  | 0.5 | 2.1 | 2.1 | 180  | 170  | 280  | 37.2 | 25.1 | 5.53 | 8.4   |      |  |     |  |       |
| 13           | Bull | 0.16        | 0.12 | 667 | 10.4 | 0.5 | 2.2 | 2.1 | 170  | 180  | 310  | 35.2 | 14.5 | 5.52 | 10.0  |      |  |     |  |       |
| 16           | Bull | 0.40        | 0.32 | 569 | 8.8  | 1.0 | 3.0 | 2.8 | 170  | 170  | 310  | 38.7 | 17.1 | 5.51 | 6.7   |      |  |     |  |       |
| 19           | Bull | 0.20        | 0.08 | 602 | 8.6  | 1.0 | 2.7 | 2.4 | 170  | 190  | 280  | 34.1 | 19.9 | 5.55 | 8.0   |      |  |     |  |       |
| 20           | Bull | 0.56        | 0.32 | 560 | 9.3  | 1.5 | 3.4 | 2.8 | 180  | 180  | 290  | 35.0 | 25.5 | 5.52 | 6.9   |      |  |     |  |       |
| 1            | Hfr  | 0.48        | 0.36 | 608 | 9.7  | 1.0 | 3.1 | 2.8 | 170  | 220  | 240  | 34.2 | 19.7 | 5.44 | 10.1  |      |  |     |  |       |
| 5            | Hfr  | 0.92        | 0.40 | 530 | 8.2  | 2.5 | 4.7 | 3.4 | 170  | 170  | 360  | 43.0 | 13.6 | 5.57 | 9.9   |      |  |     |  |       |
| 6            | Hfr  | 1.00        | 0.68 | 558 | 11.6 | 1.5 | 3.7 | 2.9 | 210  | 180  | 390  | 38.0 | 17.0 | 5.50 | 6.9   |      |  |     |  |       |
| 9            | Hfr  | 0.60        | 0.40 | 532 | 9.4  | 0.0 | 3.0 | 2.5 | 160  | 170  | 440  | 37.0 | 21.3 | 5.58 | 6.6   |      |  |     |  |       |
| 10           | Hfr  | 0.92        | 0.56 | 606 | 9.2  | 1.5 | 4.5 | 3.6 | 190  | 320  | 390  | 36.0 | 22.2 | 5.64 | 7.5   |      |  |     |  |       |
| 12           | Hfr  | 0.40        | 0.28 | 580 | 10.8 | 1.5 | 2.5 | 2.2 | 190  | 370  | 280  | 38.1 | 18.1 | 5.57 | 6.9   |      |  |     |  |       |
| 14           | Hfr  | 0.72        | 0.36 | 609 | 9.4  | 1.0 | 3.8 | 2.9 | 190  | 370  | 330  | 35.8 | 18.0 | 5.51 | 6.8   |      |  |     |  |       |
| 15           | Hfr  | 0.48        | 0.36 | 449 | 8.5  | 1.5 | 3.0 | 2.7 | 160  | 160  | 310  | 38.4 | 18.2 | 5.50 | 7.7   |      |  |     |  |       |
| 17           | Hfr  | 0.64        | 0.40 | 464 | 7.0  | 1.5 | 3.9 | 3.3 | 170  | 230  | 320  | 37.1 | 24.9 | 5.51 | 5.9   |      |  |     |  |       |
| 18           | Hfr  | 0.40        | 0.36 | 478 | 7.2  | 1.5 | 3.3 | 3.2 | 180  | 220  | 330  | 36.8 | 19.3 | 5.65 | 6.5   |      |  |     |  |       |
| Average      |      | 0.50        | 0.33 | 590 | 9.6  | 1.1 | 3.1 | 2.7 | 180  | 212  | 332  | 37.0 | 18.7 | 5.53 | 7.6   |      |  |     |  |       |
| Bull Avg     |      | 0.34        | 0.24 | 639 | 10.1 | 0.8 | 2.7 | 2.5 | 180  | 182  | 324  | 36.6 | 18.1 | 5.52 | 7.8   |      |  |     |  |       |
| Heifer Avg   |      | 0.66        | 0.42 | 541 | 9.1  | 1.4 | 3.6 | 3.0 | 179  | 241  | 339  | 37.4 | 19.2 | 5.55 | 7.5   |      |  |     |  |       |
| Beef Average |      | 0.48        | 0.49 | 787 | 13.1 | 2.3 | 2.9 | 3.0 | 165  | 167  | 423  | 39.5 | 14.3 | 5.50 | 8.0   |      |  |     |  |       |



Bull

Final Live Weight At Home, 1,170 pounds  
Live Weight At Western Buffalo Company - n/a  
Hot Hanging Weight - 667 pounds

Weaned on 12/25/01

Weaning Weight - 450 pounds

The bull was on long hay and screening pellet and corn the first winter and the first summer. The animal was finished on crested wheat hay, screening pellet and corn for 375 days.



# 2003 REALITY BASED CARCASS CLASS



| LIVE BUFFALO WEIGHT  | CARCASS WEIGHT | PER LB. VALUE      | CARCASS VALUE    |
|--|----------------|--------------------|------------------|
|  | 667            | \$2.38             | \$1,587.46       |
|  |                |                    | % OF TOTAL VALUE |
| <b>MIDDLE BUFFALO VALUE</b><br>(NY STRIP, TOP SIRLOIN BUTT, TENDERLOIN, RIB-EYE) |                | \$956.31           | 60.24%           |
| <b>BUFFALO CHUCK VALUE</b><br>(SHOULDER CLOD, INSIDE CHUCK ROLL, BRISKET)        |                | \$319.67           | 20.14%           |
| <b>BUFFALO ROUND VALUE</b><br>(PELLED KNUCKLE, TOP ROUND, FLAT, EYE OF ROUND)    |                | \$460.12           | 28.98%           |
| <b>BUFFALO THIN MEATS</b><br>(TRI-TIP, BALL-TIP, FLANK STEAK, BBQ RIB, SKIRT)    |                | \$82.83            | 5.22%            |
| <b>BUFFALO TRIM</b>  | 86%            | \$548.73           | 34.57%           |
|  |                | <b>TOTAL VALUE</b> | <b>% MARK-UP</b> |
|  |                | \$2,367.66         | 149.15%          |

| WASTE ITEMS  | LBS   | % CARCASS WEIGHT |
|--------------|-------|------------------|
| FAT & KIDNEY | 33.35 | 5.00%            |
| BONES        | 125   | 18.74%           |

|                                 |  |
|---------------------------------|--|
| <b>LENGTH</b> (SANDY RATIO) 41" | <b>LENGTH:WEIGHT RATIO</b> 0.061469              |
| <b>ROUND CIRCUMFERENCE</b> 43"  | <b>ROUND CIRCUMFERENCE:WEIGHT RATIO</b> 0.064468 |
| <b>HUMP DEPTH</b> 39"           | <b>HUMP:WEIGHT RATIO</b> 0.058471                |

| ANIMAL | SEX  | YEILD | GRADE | HCW | REA  | KPH | YGM | YGA | LEAN | MAT | SKEL | MARB | LEAN | FAT  | PH   | SHEAR |
|--------|------|-------|-------|-----|------|-----|-----|-----|------|-----|------|------|------|------|------|-------|
|        | BULL | MFAT  | AFAT  | 667 | 10.4 | 0.5 | 2.2 | 2.1 | 170  | 180 | 310  |      | 35.2 | 14.5 | 5.52 | 10.0  |

RBOCM



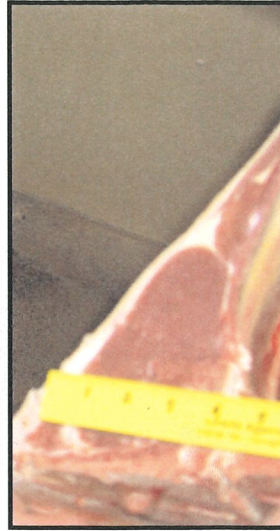
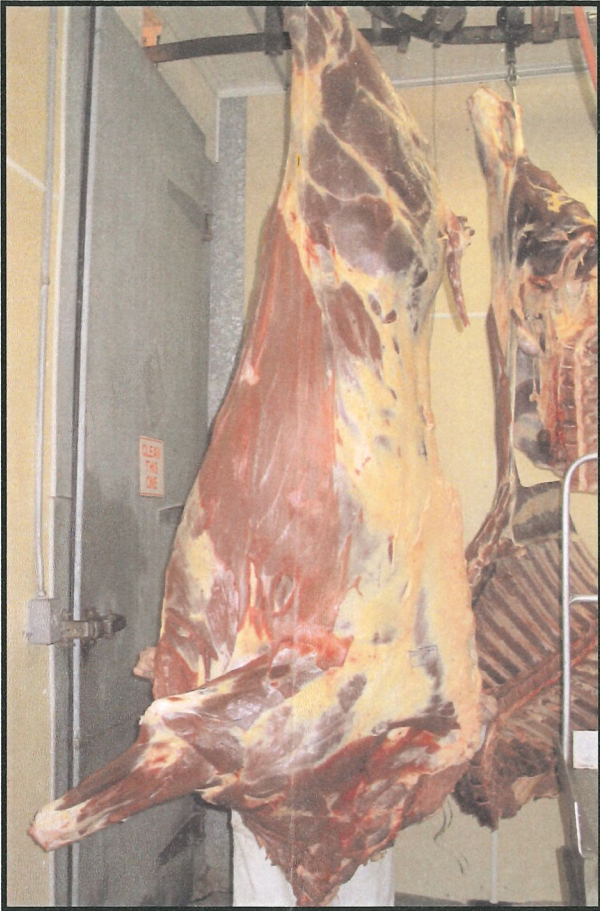
Bull

Final Live Weight At Home, 1,000 pounds  
Live Weight At Western Buffalo Company - n/a  
Hot Hanging Weight - 541 pounds

Weaned in January 2002

Weaning Weight - 670 pounds

The bull was on pasture the first winter and summer. The animal was finished on four to five pounds per day of a mixture of corn, oats and cracked soybeans for 90 days.



# 2003 REALITY BASED CARCASS CLASS



| LIVE BUFFALO WEIGHT  | CARCASS WEIGHT | PER LB. VALUE      | CARCASS VALUE    |
|--|----------------|--------------------|------------------|
|  | 541            | \$2.38             | \$1,287.58       |
|  |                |                    | % OF TOTAL VALUE |
| <b>MIDDLE BUFFALO VALUE</b><br>(NY STRIP, TOP SIRLOIN BUTT, TENDERLOIN, RIB-EYE) |                | \$731.20           | 56.79%           |
| <b>BUFFALO CHUCK VALUE</b><br>(SHOULDER CLOD, INSIDE CHUCK ROLL, BRISKET)        |                | \$252.38           | 19.60%           |
| <b>BUFFALO ROUND VALUE</b><br>(PELLED KNUCKLE, TOP ROUND, FLAT, EYE OF ROUND)    |                | \$376.33           | 29.23%           |
| <b>BUFFALO THIN MEATS</b><br>(TRI-TIP, BALL-TIP, FLANK STEAK, BBQ RIB, SKIRT)    |                | \$78.84            | 6.12%            |
| <b>BUFFALO TRIM</b>  | 87%            | \$478.50           | 37.16%           |
|  |                | <b>TOTAL VALUE</b> | <b>% MARK-UP</b> |
|  |                | \$1,917.25         | 148.90%          |

| WASTE ITEMS  | LBS   | % CARCASS WEIGHT |
|--------------|-------|------------------|
| FAT & KIDNEY | 27.05 | 5.00%            |
| BONES        | 92.1  | 17.02%           |

|                                   |  |
|-----------------------------------|--|
| <b>LENGTH (SANDY RATIO)</b> 37.5" | <b>LENGTH:WEIGHT RATIO</b> 0.069316              |
| <b>ROUND CIRCUMFERENCE</b> 40.5"  | <b>ROUND CIRCUMFERENCE:WEIGHT RATIO</b> 0.074861 |
| <b>HUMP DEPTH</b> 29.5"           | <b>HUMP:WEIGHT RATIO</b> 0.054529                |

| ANIMAL | SEX  | YEILD | GRADE | HCW | REA | KPH | YGM | YGA | LEAN | MAT | SKEL | MARB | LEAN | FAT  | PH   | SHEAR |
|--------|------|-------|-------|-----|-----|-----|-----|-----|------|-----|------|------|------|------|------|-------|
|        |      | MFAT  | AFAT  |     |     |     |     |     |      |     |      |      | L    | B    |      | FORCE |
|        | BULL | 0.12  | 0.12  | 541 | 8.8 | 0.5 | 2.1 | 2.1 | 180  |     | 170  | 280  | 37.2 | 25.1 | 5.53 | 8.4   |



**Bull**

Final Live Weight At Home, 12/16/02 - 1,298 pounds

Live Weight At Western Buffalo Company - n/a

Hot Hanging Weight - 718 pounds

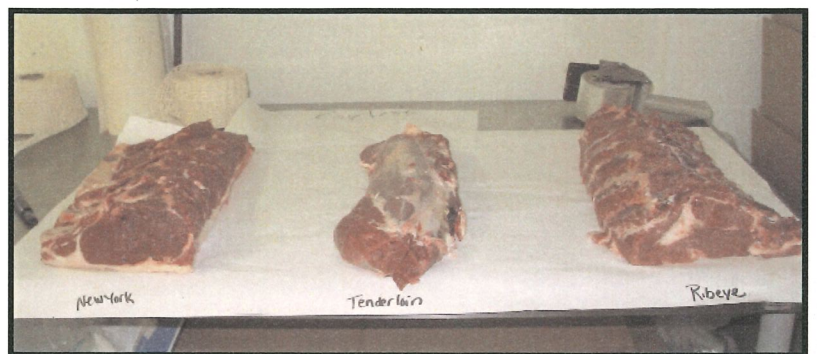
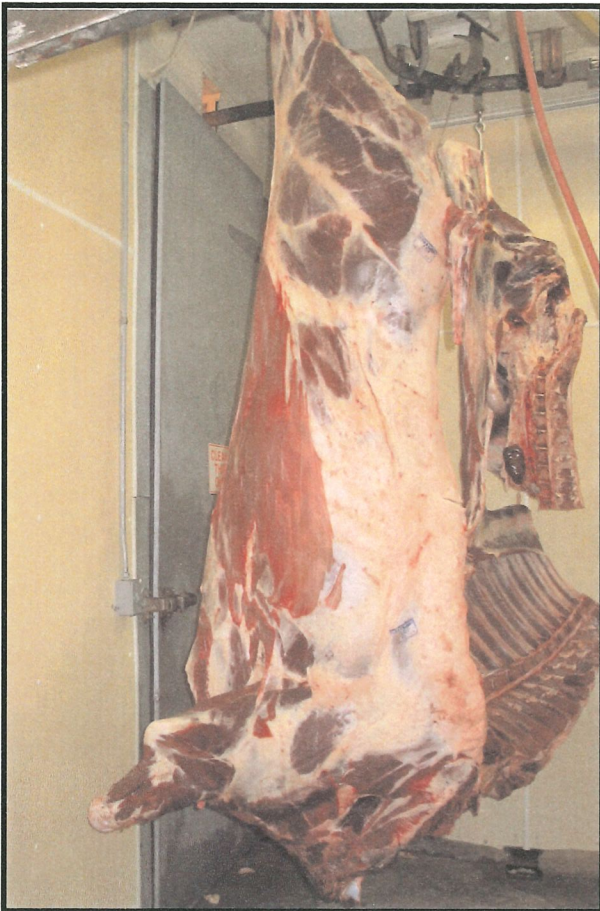
Weaned on 12/11/01

Weaning Weight - 518 pounds

The bull was fed hay and a self feeder for the first winter and the first summer. The bull was put on low protein pellets after weaning and hay and the low protein pellets were used to finish the animal. The bull was on finish feed for 13 months.



# 2003 REALITY BASED CARCASS CLASS



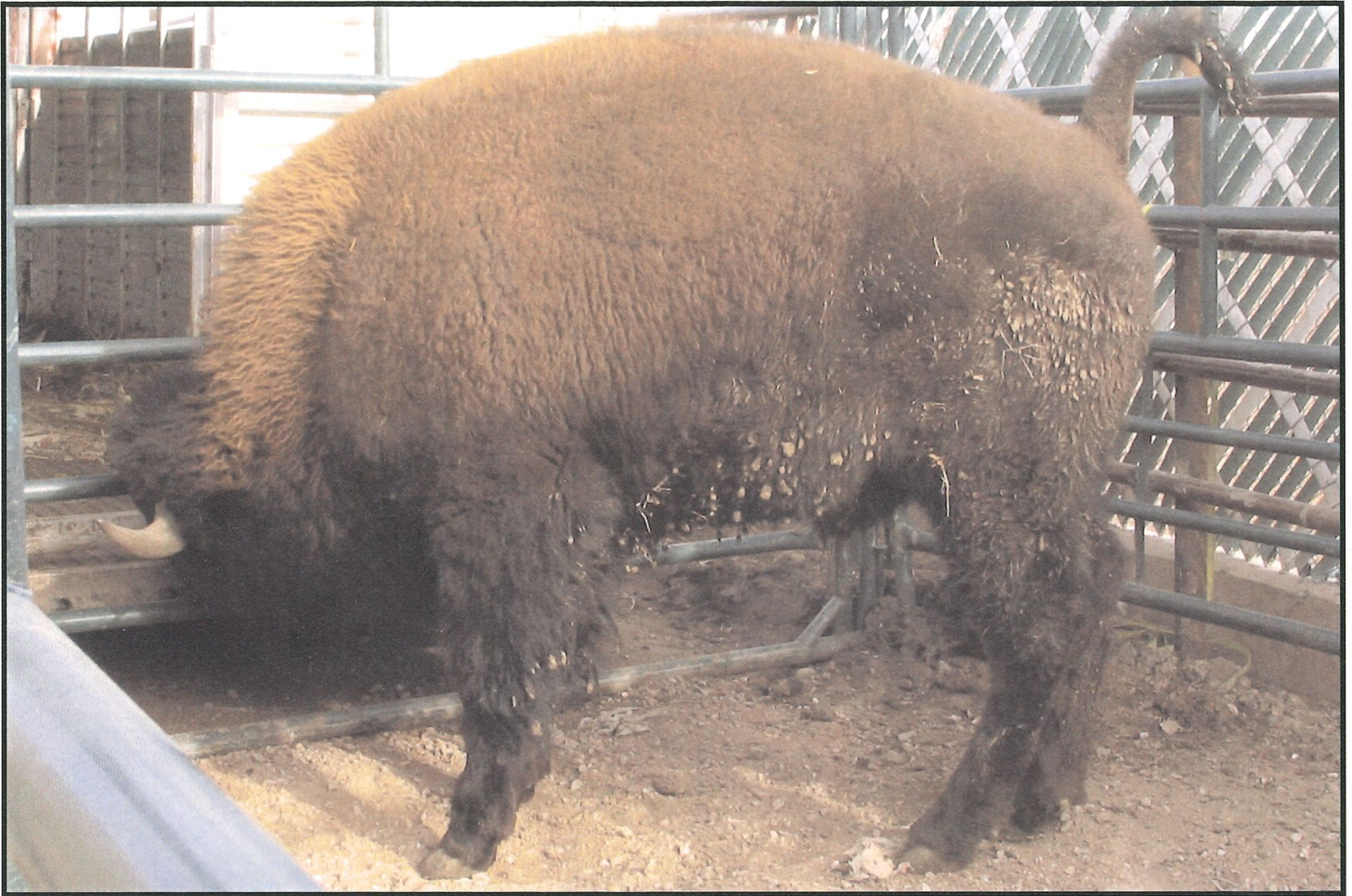
| LIVE BUFFALO WEIGHT  | CARCASS WEIGHT | PER LB. VALUE      | CARCASS VALUE    |
|--|----------------|--------------------|------------------|
|  | 718            | \$2.38             | \$1,708.84       |
|  |                |                    | % OF TOTAL VALUE |
| <b>MIDDLE BUFFALO VALUE</b><br>(NY STRIP, TOP SIRLOIN BUTT, TENDERLOIN, RIB-EYE) |                | \$950.74           | 55.64%           |
| <b>BUFFALO CHUCK VALUE</b><br>(SHOULDER CLOD, INSIDE CHUCK ROLL, BRISKET)        |                | \$379.86           | 22.23%           |
| <b>BUFFALO ROUND VALUE</b><br>(PELLED KNUCKLE, TOP ROUND, FLAT, EYE OF ROUND)    |                | \$488.25           | 28.57%           |
| <b>BUFFALO THIN MEATS</b><br>(TRI-TIP, BALL-TIP, FLANK STEAK, BBQ RIB, SKIRT)    |                | \$93.91            | 5.50%            |
| <b>BUFFALO TRIM 85%</b>  |                | \$614.80           | 35.98%           |
|  |                | <b>TOTAL VALUE</b> | <b>% MARK-UP</b> |
|  |                | \$2,527.56         | 147.91%          |

| WASTE ITEMS  | LBS | % CARCASS WEIGHT |
|--------------|-----|------------------|
| FAT & KIDNEY | 30  | 4.18%            |
| BONES        | 130 | 18.11%           |

|                             |   |
|-----------------------------|---|
| LENGTH (SANDY RATIO) 43.25" | LENGTH:WEIGHT RATIO 0.060237              |
| ROUND CIRCUMFERENCE 43.5"   | ROUND CIRCUMFERENCE:WEIGHT RATIO 0.060585 |
| HUMP DEPTH 31.25"           | HUMP:WEIGHT RATIO 0.043524                |

| ANIMAL | SEX  | YEILD | GRADE | HCW | REA  | KPH | YGM | YGA | LEAN | MAT | SKEL | MARB | LEAN | FAT  | PH  | SHEAR |
|--------|------|-------|-------|-----|------|-----|-----|-----|------|-----|------|------|------|------|-----|-------|
|        | BULL | 0.36  | 0.20  | 718 | 11.7 | 0.5 | 2.5 | 2.1 | 220  | 190 | 320  | 37.2 | 15.1 | 5.41 | 6.7 |       |

13



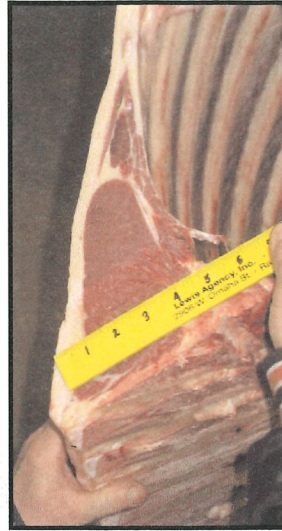
## Bull

Final Live Weight At Home, 1,090 pounds  
Live Weight At Western Buffalo Company - n/a  
Hot Hanging Weight - 618 pounds

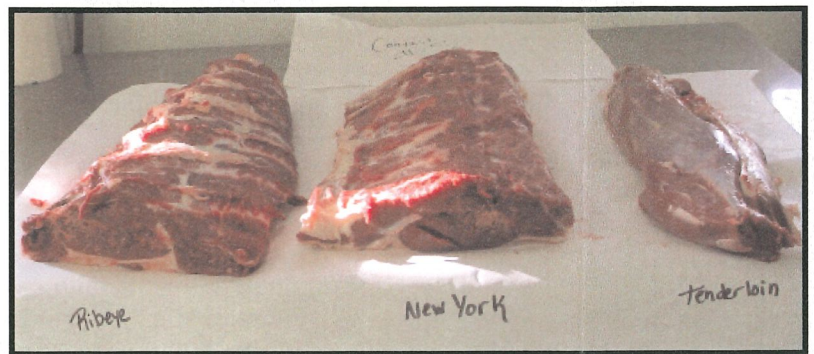
Weaned on 11/2/01

Weaning Weight - 360 pounds

The bull was fed a mixture of 70 percent corn/30 percent oats the first winter, along with mixed grass hay. The first summer, the bull was fed straight cracked corn and mixed hay. The animal was finished on cracked corn, mixed hay and corn stalks for 90 days.



# 2003 REALITY BASED CARCASS CLASS



| LIVE BUFFALO WEIGHT  | CARCASS WEIGHT | PER LB. VALUE      | CARCASS VALUE    |
|--|----------------|--------------------|------------------|
|  | 618            | \$2.38             | \$1,470.84       |
|  |                |                    | % OF TOTAL VALUE |
| <b>MIDDLE BUFFALO VALUE</b><br>(NY STRIP, TOP SIRLOIN BUTT, TENDERLOIN, RIB-EYE) |                | \$855.94           | 58.19%           |
| <b>BUFFALO CHUCK VALUE</b><br>(SHOULDER CLOD, INSIDE CHUCK ROLL, BRISKET)        |                | \$299.52           | 20.36%           |
| <b>BUFFALO ROUND VALUE</b><br>(PELLED KNUCKLE, TOP ROUND, FLAT, EYE OF ROUND)    |                | \$422.11           | 28.70%           |
| <b>BUFFALO THIN MEATS</b><br>(TRI-TIP, BALL-TIP, FLANK STEAK, BBQ RIB, SKIRT)    |                | \$80.94            | 5.50%            |
| <b>BUFFALO TRIM</b> 85%  |                | \$510.30           | 34.69%           |
|  |                | <b>TOTAL VALUE</b> | <b>% MARK-UP</b> |
|  |                | \$2,168.81         | 147.45%          |

| WASTE ITEMS  | LBS  | % CARCASS WEIGHT |
|--------------|------|------------------|
| FAT & KIDNEY | 39.1 | 6.33%            |
| BONES        | 108  | 17.48%           |

|                                   |  |
|-----------------------------------|--|
| <b>LENGTH</b> (SANDY RATIO) 38"   | <b>LENGTH:WEIGHT RATIO</b> 0.061489              |
| <b>ROUND CIRCUMFERENCE</b> 41.75" | <b>ROUND CIRCUMFERENCE:WEIGHT RATIO</b> 0.067557 |
| <b>HUMP DEPTH</b> 29.5"           | <b>HUMP:WEIGHT RATIO</b> 0.047735                |

| ANIMAL | SEX  | YEILD | GRADE | MFAT | AFAT | HCW | REA | KPH | YGM | YGA | LEAN | MAT  | SKEL | MARB | LEAN | FAT | PH | SHEAR |
|--------|------|-------|-------|------|------|-----|-----|-----|-----|-----|------|------|------|------|------|-----|----|-------|
|        | BULL | 0.40  | 0.32  | 618  | 10.2 | 0.5 | 2.7 | 2.5 | 180 | 180 | 330  | 37.5 | 17.5 | 5.56 | 7.6  |     |    |       |

14



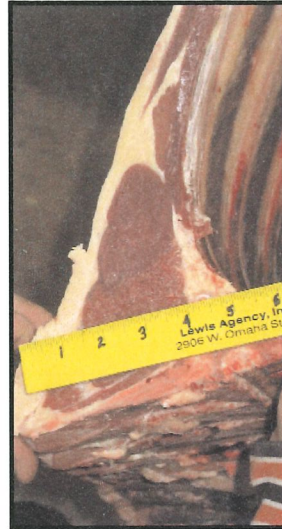
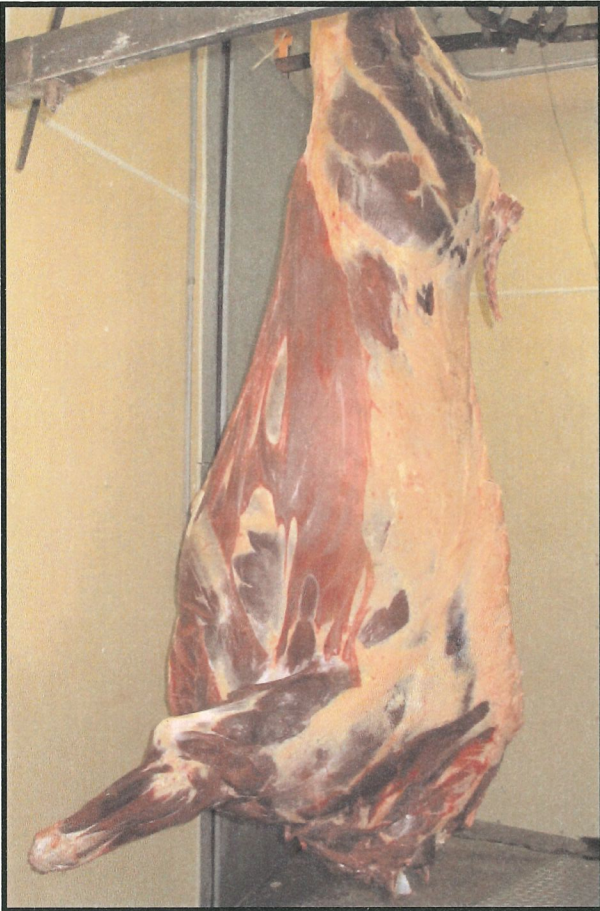
## Bull

Final Live Weight At Home, 988 pounds  
Live Weight At Western Buffalo Company - n/a  
Hot Hanging Weight 560

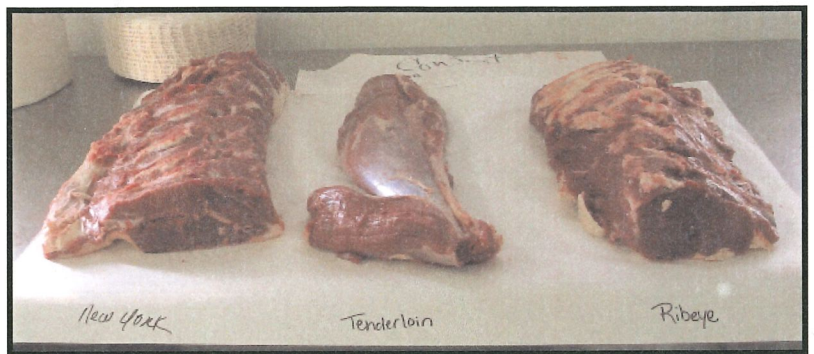
Weaned on 12/14/01

Weaning Weight - 490 pounds

The bull was on free choice grass hay and a mixture of 3/4 corn and 1/4 alfalfa at three pounds per day for the first winter. The bull was out to pasture the first summer. The bull was finished on free choice grass hay and a mixture of 3/4 corn and 1/4 alfalfa at 15 pounds per day for 93 days.



# 2003 REALITY BASED CARCASS CLASS



| LIVE BUFFALO WEIGHT  | CARCASS WEIGHT | PER LB. VALUE      | CARCASS VALUE    |
|--|----------------|--------------------|------------------|
|  | 560            | \$2.38             | \$1,332.80       |
|  |                |                    | % OF TOTAL VALUE |
| <b>MIDDLE BUFFALO VALUE</b><br>(NY STRIP, TOP SIRLOIN BUTT, TENDERLOIN, RIB-EYE) |                | \$777.78           | 58.36%           |
| <b>BUFFALO CHUCK VALUE</b><br>(SHOULDER CLOD, INSIDE CHUCK ROLL, BRISKET)        |                | \$264.53           | 19.85%           |
| <b>BUFFALO ROUND VALUE</b><br>(PELLED KNUCKLE, TOP ROUND, FLAT, EYE OF ROUND)    |                | \$381.90           | 28.65%           |
| <b>BUFFALO THIN MEATS</b><br>(TRI-TIP, BALL-TIP, FLANK STEAK, BBQ RIB, SKIRT)    |                | \$79.25            | 5.95%            |
| <b>BUFFALO TRIM 86%</b>  |                | \$453.18           | 34.00%           |
|  |                | <b>TOTAL VALUE</b> | <b>% MARK-UP</b> |
|  |                | \$1,956.64         | 146.81%          |

| WASTE ITEMS  | LBS | % CARCASS WEIGHT |
|--------------|-----|------------------|
| FAT & KIDNEY | 36  | 6.43%            |
| BONES        | 104 | 18.57%           |

|                           |   |
|---------------------------|---|
| LENGTH (SANDY RATIO) 38"  | LENGTH:WEIGHT RATIO 0.067857              |
| ROUND CIRCUMFERENCE 40.5" | ROUND CIRCUMFERENCE:WEIGHT RATIO 0.072321 |
| HUMP DEPTH 28.5"          | HUMP:WEIGHT RATIO 0.050893                |

| ANIMAL | SEX  | YEILD | GRADE | HCW | REA | KPH | YGM | YGA | LEAN | MAT | SKEL | MARB | LEAN | FAT  | PH   | SHEAR |
|--------|------|-------|-------|-----|-----|-----|-----|-----|------|-----|------|------|------|------|------|-------|
|        | BULL | MFAT  | AFAT  | 560 | 9.3 | 1.5 | 3.4 | 2.8 | 180  |     | 180  | 290  | 35.0 | 25.5 | 5.52 | 6.9   |

15



Bull

Final Live Weight At Home, n/a

Live Weight At Western Buffalo Company - n/a

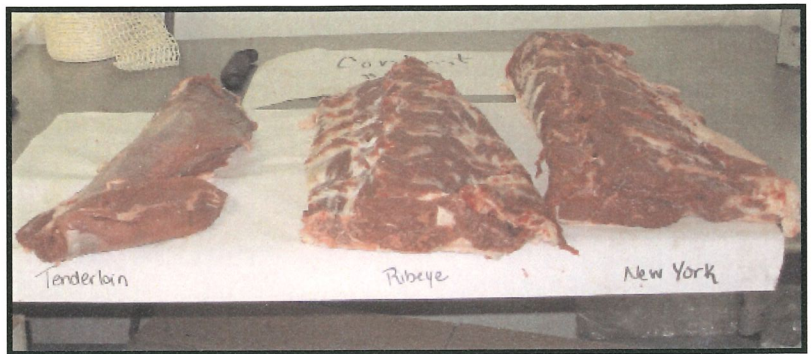
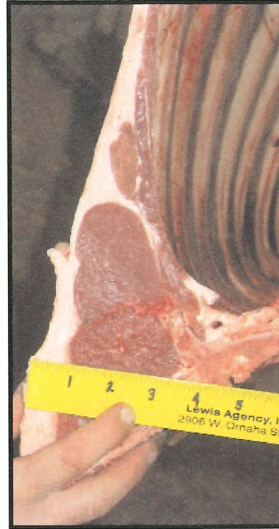
Hot Hanging Weight - 569 pounds

Weaned on 12/05/01

Weaning Weight - 470 pounds

The bull was fed hay and buffalo grow for the first winter and was out to pasture for the first summer. The animal was finished on full feed and hay for 128 days. The finishing feed consisted of full grass and 2/3 corn, 1/3 oat screenings, put in DDG to get the protein up to 13.3 percent and put in 300 pounds of molasses per ton.

# 2003 REALITY BASED CARCASS CLASS



| LIVE BUFFALO WEIGHT  | CARCASS WEIGHT | PER LB. VALUE      | CARCASS VALUE    |
|--|----------------|--------------------|------------------|
|  | 569            | \$2.38             | \$1,354.22       |
|  |                |                    | % OF TOTAL VALUE |
| <b>MIDDLE BUFFALO VALUE</b><br>(NY STRIP, TOP SIRLOIN BUTT, TENDERLOIN, RIB-EYE) |                | \$791.53           | 58.45%           |
| <b>BUFFALO CHUCK VALUE</b><br>(SHOULDER CLOD, INSIDE CHUCK ROLL, BRISKET)        |                | \$268.24           | 19.81%           |
| <b>BUFFALO ROUND VALUE</b><br>(PELLED KNUCKLE, TOP ROUND, FLAT, EYE OF ROUND)    |                | \$392.33           | 28.97%           |
| <b>BUFFALO THIN MEATS</b><br>(TRI-TIP, BALL-TIP, FLANK STEAK, BBQ RIB, SKIRT)    |                | \$77.74            | 5.74%            |
| <b>BUFFALO TRIM</b>  | 86%            | \$440.00           | 32.49%           |
|  |                | <b>TOTAL VALUE</b> | <b>% MARK-UP</b> |
|  |                | \$1,969.84         | 145.46%          |

| WASTE ITEMS  | LBS  | % CARCASS WEIGHT |
|--------------|------|------------------|
| FAT & KIDNEY | 36.4 | 6.40%            |
| BONES        | 112  | 119.68%          |

|                          |   |
|--------------------------|---|
| LENGTH (SANDY RATIO) 39" | LENGTH:WEIGHT RATIO 0.068541              |
| ROUND CIRCUMFERENCE 41"  | ROUND CIRCUMFERENCE:WEIGHT RATIO 0.072056 |
| HUMP DEPTH 28.5"         | HUMP:WEIGHT RATIO 0.050088                |

| ANIMAL | SEX  | YEILD GRADE |      | HCW | REA | KPH | YGM | YGA | LEAN | MAT | SKEL | MARB | LEAN | FAT  | PH   | SHEAR FORCE |
|--------|------|-------------|------|-----|-----|-----|-----|-----|------|-----|------|------|------|------|------|-------------|
|        |      | MFAT        | AFAT |     |     |     |     |     |      |     |      |      | L    | B    |      |             |
|        | BULL | 0.40        | 0.32 | 569 | 8.8 | 1.0 | 3.0 | 2.8 | 170  |     | 170  | 310  | 38.7 | 17.1 | 5.51 | 6.7         |

16



## Bull

Final Live Weight At Home, 11/7/02 - 1,298 pounds

Live Weight At Western Buffalo Company - n/a

Hot Hanging Weight - 731 pounds

Sire: MTR - 1/2 "M" line, 1/2 Teddy Roosevelt

Dam - Teddy Roosevelt heifer

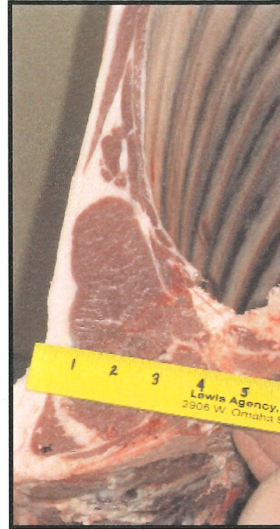
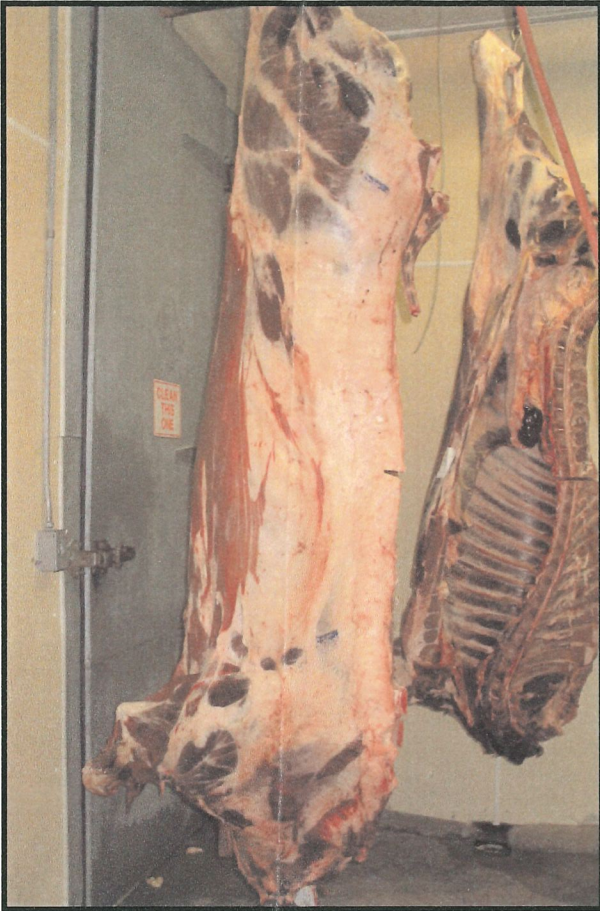
Born: 4/9/01

Weaned on 10/12/01

Weaning Weight - 522 pounds

The bull has been on hay and oats and pellets since weaning. The final four months, the bull was on hay and "Doc Ken's pellets" with a little oats.





# 2003 REALITY BASED CARCASS CLASS



| LIVE BUFFALO WEIGHT  | CARCASS WEIGHT | PER LB. VALUE      | CARCASS VALUE    |
|--|----------------|--------------------|------------------|
|  | 731            | \$2.38             | \$1,739.78       |
|  |                |                    | % OF TOTAL VALUE |
| <b>MIDDLE BUFFALO VALUE</b><br>(NY STRIP, TOP SIRLOIN BUTT, TENDERLOIN, RIB-EYE) |                | \$1,016.89         | 58.45%           |
| <b>BUFFALO CHUCK VALUE</b><br>(SHOULDER CLOD, INSIDE CHUCK ROLL, BRISKET)        |                | \$352.32           | 20.25%           |
| <b>BUFFALO ROUND VALUE</b><br>(PELLED KNUCKLE, TOP ROUND, FLAT, EYE OF ROUND)    |                | \$448.58           | 25.781%          |
| <b>BUFFALO THIN MEATS</b><br>(TRI-TIP, BALL-TIP, FLANK STEAK, BBQ RIB, SKIRT)    |                | \$95.59            | 5.49%            |
| <b>BUFFALO TRIM 84%</b>  |                | \$613.60           | 35.27%           |
|  |                | <b>TOTAL VALUE</b> | <b>% MARK-UP</b> |
|  |                | \$2,526.98         | 145.25%          |

| WASTE ITEMS  | LBS   | % CARCASS WEIGHT |
|--------------|-------|------------------|
| FAT & KIDNEY | 32    | 4.38%            |
| BONES        | 136.2 | 18.63%           |

|                                    |  |
|------------------------------------|--|
| <b>LENGTH (SANDY RATIO)</b> 42.25" | <b>LENGTH:WEIGHT RATIO</b> 0.057798              |
| <b>ROUND CIRCUMFERENCE</b> 44"     | <b>ROUND CIRCUMFERENCE:WEIGHT RATIO</b> 0.060192 |
| <b>HUMP DEPTH</b> 30.25"           | <b>HUMP:WEIGHT RATIO</b> 0.041382                |

| ANIMAL | SEX  | YEILD GRADE |      | HCW | REA  | KPH | YGM | YGA | LEAN | MAT | SKEL | MARB | LEAN L | FAT B | PH   | SHEAR FORCE |
|--------|------|-------------|------|-----|------|-----|-----|-----|------|-----|------|------|--------|-------|------|-------------|
|        | BULL | 0.32        | 0.24 | 731 | 11.2 | 0.5 | 2.6 | 2.4 | 170  |     | 210  | 370  | 37.4   | 14.0  | 5.51 | 8.7         |

17



## Bull

Final Live Weight At Home, 12/16/02 - 1,352 pounds

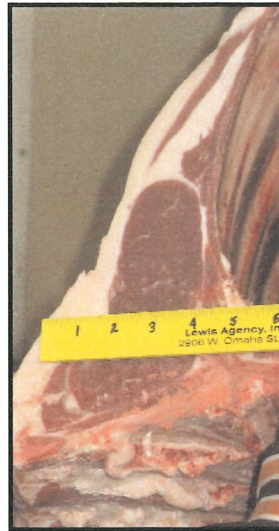
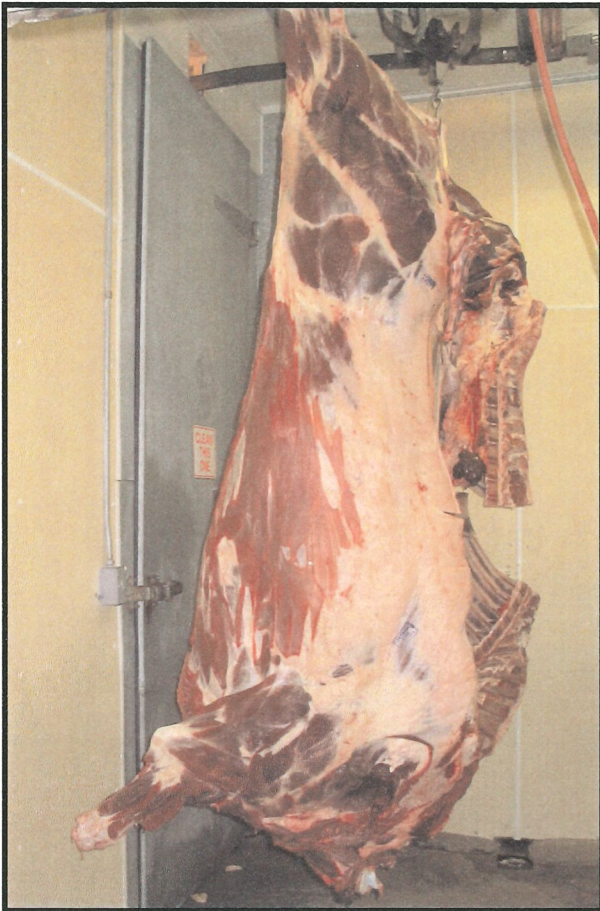
Live Weight At Western Buffalo Company - n/a

Hot Hanging Weight - 730 pounds

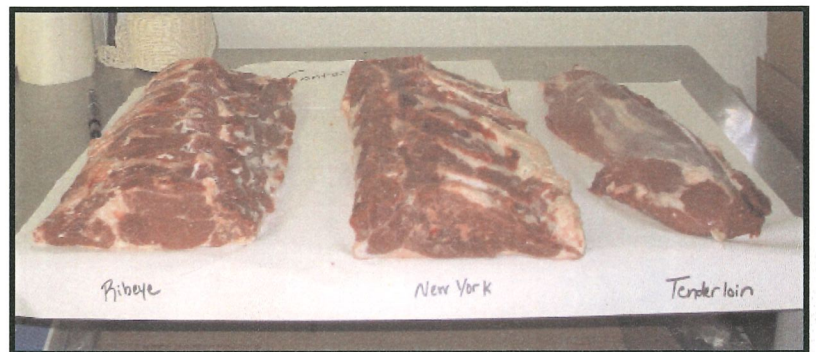
Weaned on 12/11/01

Weaning Weight - 492 pounds

The bull was fed hay and a self feeder for the first winter and the first summer. The bull was put on low protein pellets after weaning and hay and the low protein pellets were used to finish the animal. The bull was on finish feed for 13 months.



# 2003 REALITY BASED CARCASS CLASS



| LIVE BUFFALO WEIGHT  | CARCASS WEIGHT | PER LB. VALUE      | CARCASS VALUE    |
|--|----------------|--------------------|------------------|
|  | 730            | \$2.38             | \$1,737.40       |
|  |                |                    | % OF TOTAL VALUE |
| <b>MIDDLE BUFFALO VALUE</b><br>(NY STRIP, TOP SIRLOIN BUTT, TENDERLOIN, RIB-EYE) |                | \$1,029.81         | 59.27%           |
| <b>BUFFALO CHUCK VALUE</b><br>(SHOULDER CLOD, INSIDE CHUCK ROLL, BRISKET)        |                | \$324.45           | 18.67%           |
| <b>BUFFALO ROUND VALUE</b><br>(PELLED KNUCKLE, TOP ROUND, FLAT, EYE OF ROUND)    |                | \$468.55           | 26.97%           |
| <b>BUFFALO THIN MEATS</b><br>(TRI-TIP, BALL-TIP, FLANK STEAK, BBQ RIB, SKIRT)    |                | \$91.11            | 5.24%            |
| <b>BUFFALO TRIM 85%</b>  |                | \$586.95           | 33.78%           |
|  |                | <b>TOTAL VALUE</b> | <b>% MARK-UP</b> |
|  |                | \$2,500.87         | 143.94%          |

| WASTE ITEMS  | LBS | % CARCASS WEIGHT |
|--------------|-----|------------------|
| FAT & KIDNEY | 32  | 4.38%            |
| BONES        | 152 | 20.82%           |

|                            |   |
|----------------------------|---|
| LENGTH (SANDY RATIO) 40.5" | LENGTH:WEIGHT RATIO 0.055479              |
| ROUND CIRCUMFERENCE 42.75" | ROUND CIRCUMFERENCE:WEIGHT RATIO 0.058562 |
| HUMP DEPTH 30.5"           | HUMP:WEIGHT RATIO 0.041781                |

| ANIMAL | SEX  | YEILD | GRADE | HCW | REA  | KPH | YGM | YGA | LEAN | MAT | SKEL | MARB | LEAN | FAT  | PH   | SHEAR |
|--------|------|-------|-------|-----|------|-----|-----|-----|------|-----|------|------|------|------|------|-------|
|        |      | MFAT  | AFAT  |     |      |     |     |     |      |     |      |      | L    | B    |      | FORCE |
|        | BULL | 0.40  | 0.28  | 730 | 13.0 | 1.5 | 2.4 | 2.1 | 190  |     | 170  | 370  | 35.7 | 15.6 | 5.53 | 8.1   |

18



Bull

Final Live Weight At Home, n/a

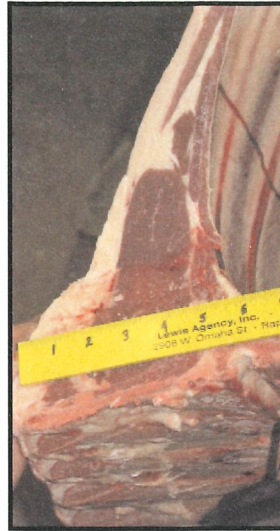
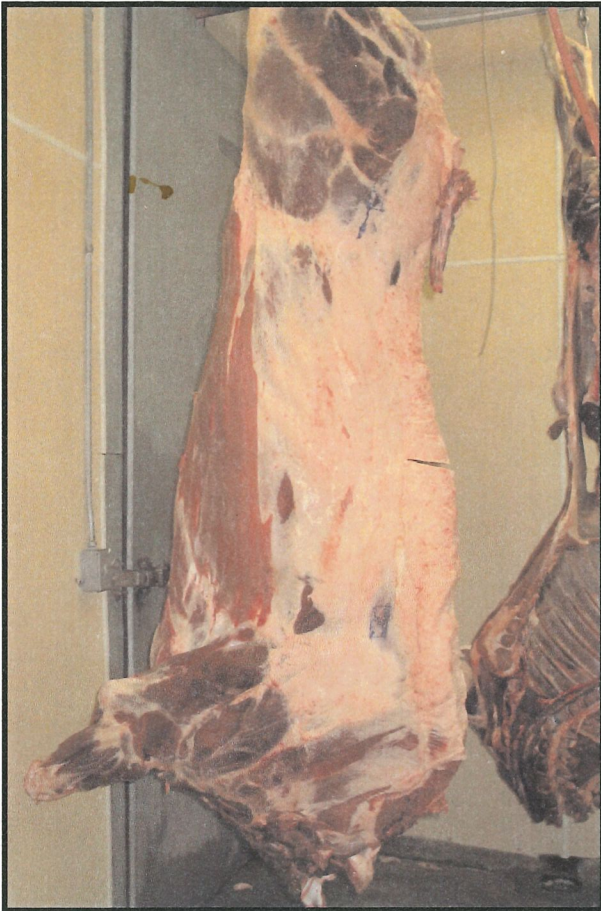
Live Weight At Western Buffalo Company - n/a

Hot Hanging Weight - 653 pounds

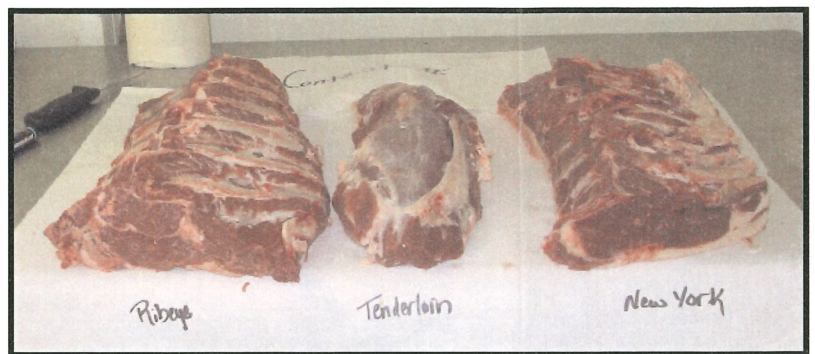
Weaned on 12/1/01

Weaning Weight - 456 pounds

The bull was fed free choice pellets plus hay free choice for 90 days the first winter. The bull was turned out to grass in March with three pounds of cake per day for 60 days. Because of the dry year, the animal was put on feed earlier than normal, in July. The animal was on finish feed for 150 days.



# 2003 REALITY BASED CARCASS CLASS

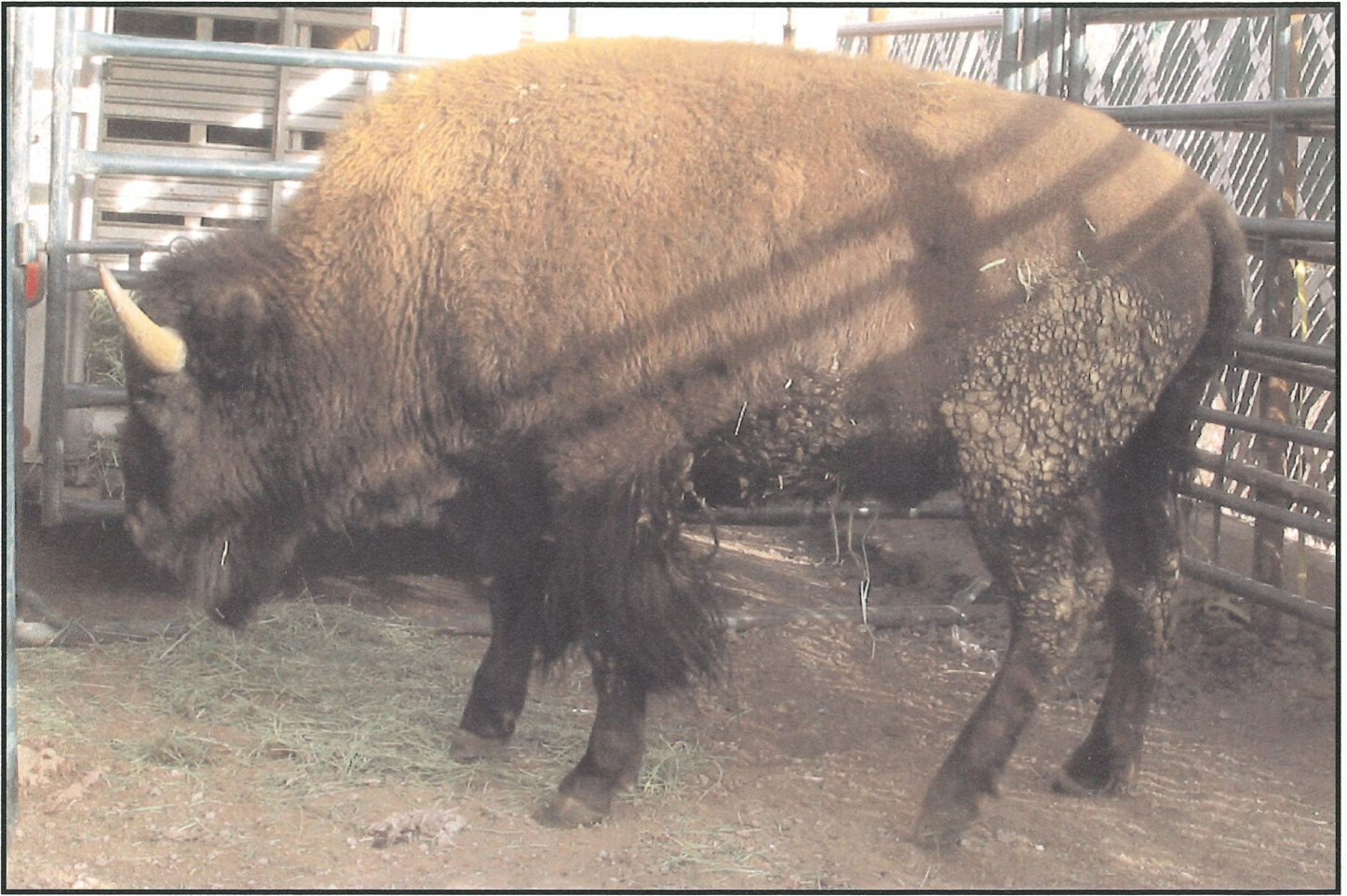


| LIVE BUFFALO WEIGHT  | CARCASS WEIGHT | PER LB. VALUE      | CARCASS VALUE    |
|--|----------------|--------------------|------------------|
|  | 653            | \$2.38             | \$1,554.14       |
|  |                |                    | % OF TOTAL VALUE |
| <b>MIDDLE BUFFALO VALUE</b><br>(NY STRIP, TOP SIRLOIN BUTT, TENDERLOIN, RIB-EYE) |                | \$893.55           | 57.49%           |
| <b>BUFFALO CHUCK VALUE</b><br>(SHOULDER CLOD, INSIDE CHUCK ROLL, BRISKET)        |                | \$320.40           | 20.62%           |
| <b>BUFFALO ROUND VALUE</b><br>(PELLED KNUCKLE, TOP ROUND, FLAT, EYE OF ROUND)    |                | \$423.97           | 27.281%          |
| <b>BUFFALO THIN MEATS</b><br>(TRI-TIP, BALL-TIP, FLANK STEAK, BBQ RIB, SKIRT)    |                | \$85.17            | 5.48%            |
| <b>BUFFALO TRIM</b>  | 84%            | \$507.78           | 32.67%           |
|  |                | <b>TOTAL VALUE</b> | <b>% MARK-UP</b> |
|  |                | \$2,230.87         | 143.54%          |

| WASTE ITEMS  | LBS   | % CARCASS WEIGHT |
|--------------|-------|------------------|
| FAT & KIDNEY | 46    | 7.04%            |
| BONES        | 122.5 | 18.76%           |

|                                   |  |
|-----------------------------------|--|
| <b>LENGTH</b> (SANDY RATIO) 39.5" | <b>LENGTH:WEIGHT RATIO</b> 0.06049               |
| <b>ROUND CIRCUMFERENCE</b> 42"    | <b>ROUND CIRCUMFERENCE:WEIGHT RATIO</b> 0.064319 |
| <b>HUMP DEPTH</b> 30"             | <b>HUMP:WEIGHT RATIO</b> 0.045942                |

| ANIMAL | SEX  | YEILD | GRADE | HCW | REA | KPH | YGM | YGA | LEAN | MAT | SKEL | MARB | LEAN | FAT  | PH  | SHEAR |
|--------|------|-------|-------|-----|-----|-----|-----|-----|------|-----|------|------|------|------|-----|-------|
|        | BULL | 0.52  | 0.40  | 653 | 9.1 | 0.5 | 3.5 | 3.2 | 170  | 180 | 380  | 38.0 | 16.9 | 5.57 | 7.6 |       |



## Bull

Final Live Weight At Home, 1,098 pounds  
Live Weight At Western Buffalo Company - n/a  
Hot Hanging Weight - 602 pounds

Weaned on 11/15/01

Weaning Weight - 500 pounds

The bull was on free choice grass hay and a mixture of 3/4 corn and 1/4 alfalfa at three pounds per day for the first winter. The bull was out to pasture the first summer. The bull was finished on free choice grass hay and a mixture of 3/4 corn and 1/4 alfalfa at 15 pounds per day for 93 days.



# 2003 REALITY BASED CARCASS CLASS



| LIVE BUFFALO WEIGHT  | CARCASS WEIGHT | PER LB. VALUE      | CARCASS VALUE    |
|--|----------------|--------------------|------------------|
|  | 602            | \$2.38             | \$1,432.76       |
|  |                |                    | % OF TOTAL VALUE |
| <b>MIDDLE BUFFALO VALUE</b><br>(NY STRIP, TOP SIRLOIN BUTT, TENDERLOIN, RIB-EYE) |                | \$828.64           | 57.84%           |
| <b>BUFFALO CHUCK VALUE</b><br>(SHOULDER CLOD, INSIDE CHUCK ROLL, BRISKET)        |                | \$269.43           | 18.80%           |
| <b>BUFFALO ROUND VALUE</b><br>(PELLED KNUCKLE, TOP ROUND, FLAT, EYE OF ROUND)    |                | \$411.41           | 28.71%           |
| <b>BUFFALO THIN MEATS</b><br>(TRI-TIP, BALL-TIP, FLANK STEAK, BBQ RIB, SKIRT)    |                | \$81.54            | 5.69%            |
| <b>BUFFALO TRIM 85%</b>  |                | \$445.50           | 31.09%           |
|  |                | <b>TOTAL VALUE</b> | <b>% MARK-UP</b> |
|  |                | \$2,036.52         | 142.14%          |

| WASTE ITEMS  | LBS | % CARCASS WEIGHT |
|--------------|-----|------------------|
| FAT & KIDNEY | 39  | 6.48%            |
| BONES        | 129 | 21.43%           |

|                                  |  |
|----------------------------------|--|
| <b>LENGTH (SANDY RATIO) 39"</b>  | <b>LENGTH:WEIGHT RATIO 0.064784</b>              |
| <b>ROUND CIRCUMFERENCE 41.5"</b> | <b>ROUND CIRCUMFERENCE:WEIGHT RATIO 0.068937</b> |
| <b>HUMP DEPTH 31"</b>            | <b>HUMP:WEIGHT RATIO 0.051495</b>                |

| ANIMAL | SEX  | YEILD GRADE |      | HCW | REA | KPH | YGM | YGA | MAT  |      | LEAN | LEAN | FAT  | PH   | SHEAR |
|--------|------|-------------|------|-----|-----|-----|-----|-----|------|------|------|------|------|------|-------|
|        | BULL | MFAT        | AFAT |     |     |     |     |     | LEAN | SKEL | MARB | L    | B    |      | FORCE |
|        |      | 0.20        | 0.08 | 602 | 8.6 | 1.0 | 2.7 | 2.4 | 170  | 190  | 280  | 34.1 | 19.9 | 5.55 | 8.0   |

20

# 2003 REALITY BASED CARCASS CLASS

COMPOSITE BULL

| LIVE BUFFALO WEIGHT   | CARCASS WEIGHT | PER LB. VALUE      | CARCASS VALUE    |
|---|----------------|--------------------|------------------|
|   | 638.9          | \$2.38             | \$1,520.58       |
|   |                |                    | % OF TOTAL VALUE |
| <b>MIDDLE BUFFALO VALUE</b><br><i>(NY STRIP, TOP SIRLOIN BUTT, TENDERLOIN, RIB-EYE)</i> |                | \$883.29           | 58.09%           |
| <b>BUFFALO CHUCK VALUE</b><br><i>(SHOULDER CLOD, INSIDE CHUCK ROLL, BRISKET)</i>        |                | \$305.10           | 20.06%           |
| <b>BUFFALO ROUND VALUE</b><br><i>(PELLED KNUCKLE, TOP ROUND, FLAT, EYE OF ROUND)</i>    |                | \$427.38           | 28.11%           |
| <b>BUFFALO THIN MEATS</b><br><i>(TRI-TIP, BALL-TIP, FLANK STEAK, BBQ RIB, SKIRT)</i>    |                | \$84.78            | 5.58%            |
| <b>BUFFALO TRIM 85%</b>   |                | \$525.25           | 34.54%           |
|   |                | <b>TOTAL VALUE</b> | <b>% MARK-UP</b> |
|   |                | \$2,225.80         | 146.38%          |

| WASTE ITEMS  | LBS | % CARCASS WEIGHT |
|--------------|-----|------------------|
| FAT & KIDNEY | 36  | 5.63%            |
| BONES        | 104 | 16.28%           |

| LENGTH (SANDY RATIO) | LENGTH:WEIGHT RATIO              |
|----------------------|----------------------------------|
| ROUND CIRCUMFERENCE  | ROUND CIRCUMFERENCE:WEIGHT RATIO |
| HUMP DEPTH           | HUMP:WEIGHT RATIO                |

| RBCCA   |      |             |      |     |      |     |     |     |      |      |      |      |      |      |       |
|---------|------|-------------|------|-----|------|-----|-----|-----|------|------|------|------|------|------|-------|
| ANIMAL  | SEX  | YEILD GRADE |      | HCW | REA  | KPH | YGM | YGA | LEAN | MAT  | MARB | LEAN | FAT  | PH   | SHEAR |
| Average | BULL | MFAT        | AFAT | 639 | 10.1 | 0.8 | 2.7 | 2.5 | 180  | SKEL | 324  | L    | B    | 5.52 | FORCE |
|         |      | 0.34        | 0.24 |     |      |     |     |     |      | 182  |      | 36.6 | 18.1 |      | 7.8   |