

DTBA 2002 Reality Based Carcass Class *Program Details*

The Dakota Territory Buffalo Association (DTBA) held the second Reality Based Carcass Class in conjunction with the 2002 Black Hills Buffalo Classic Show and Sale. Last year, the carcass class offered another dimension to the DTBA's already successful live animal show and sale. Through this new class, the association has been able to focus on and give attention to the driving force of the buffalo industry, quality meat production.

Buffalo ranchers produce some of the healthiest, most appetizing red meat in the world and consumers can and will continue to demand this meat product. With that in mind, the DTBA decided to again host a carcass class that will help to educate producers on the economic benefits of taking their bull calves all the way to slaughter weight. Additionally, for the first time ever in the buffalo industry, the DTBA opened up the contest to heifers. With the addition of 10 available spots for heifers, this contest will mark the first time any data has ever been recorded on slaughter heifers. A total of 20 entries were accepted, 10 each of bulls and heifers. Trophies will awarded for the first three places. There will also be a \$5,000 cash prize for the first place carcass in the bulls and another \$5,000 cash award for the highest placing female carcass.

The success of last year's contest was partly due to the unique nature of it. About a year and a half ago, Buffalo, SD producer, Sandy Limpert, approached Bruce Anderson of RC Western Meats in Rapid City, SD. What Limpert was suggesting was to do a carcass contest, but with a different twist. He wanted to have the contest winner determined based on the retail value of the meat the animal was able to put in the box. This is an idea that Limpert has been kicking around for a number of years and has been fine-tuning the details. Having been told it couldn't be done, that just spurred him on to find a way to do it. When he approached Anderson, Anderson was intrigued with the idea and also, being a large regional bison meat purveyor, wanted to know the results for his own personal experience. After much discussion and lots of fine tuning, the Dakota Territory Buffalo Association (DTBA) was the official host of the new Reality-Based Carcass Class.

The contest idea is simple. After the animals are delivered and a live weight obtained, they are then slaughtered. A hot hanging weight is recorded. After hanging in the cooler for a set amount of time, the carcasses are halved and then quartered. Under the watchful eye of an independent party, in this case, Dr. Robert Maddock of South Dakota State University, the meat is trimmed to a quarter inch of fat cover. All the fat that was trimmed off is weighed. Each cut is then weighed with a consistent, current value per pound put on them. The remaining bones, minus the trimmed off meat, are also weighed. A sample of burger from each carcass is cooked and the fat content measured. Anderson has developed a sliding scale in which to base value of the burger on its percentage of lean meat, meaning the leaner the meat, the more it was worth per pound.

Upon the completion of the contest, a sheet is made for each entry. It contains data such as the carcass weight, the carcass value, the middle value, the chuck value, the round value, the thin meats value and the trim. It also contains the waste items, including the fat and kidney and the bones. The winner is determined by the highest percentage of growth from the carcass value to the retail value.

So, what is accomplished by this reality-based contest? Limpert hopes that the data recorded and provided to the producers will help them understand their feeding program and how it affects the final product. From Anderson's point of view, it helps producers know what kind of animal will make the packer and the producer the most money. Over time, the records kept from this type of contest will help producers make genetic and production decisions that will help their yields and produce an efficient product. When the data from the first contest was released to the public, there were many calls to the association noting that this industry first had done it's job in generating the beginning of a new database for buffalo meat producers.

Producers who entered the contest this year were asked to provide as much background data as possible on their animal, including genetic history, growth progress, feeding program, traveling information, nearly anything that might be recordable. Once again, photographs of the live animals were taken and photographs were taken throughout the entire process to record each entry and help producers and consumers to better understand the value of the meat they produce and consume.

Consignors entered in the 2003 Reality Based Carcass Class

Blue Valley Ranch, manager Perry Handyside, Kremmling, CO
Rx KenMar Ranch, Dr. Ken and Marlys Throlson, New Rockford, ND
Slim Buttes Buffalo Ranch, Sandy & Jacki Limpert, Buffalo, SD
Nolz Poor Farm Bison, Ed & Deanna Nolz, Sioux Falls, SD
Beaver Creek Buffalo Co., Brad Beavers, Jefferson, SD
Prairie Rose Buffalo Ranch, Heath Peterson, Reville, SD
Sexhus/Kakela Bison Ranch, Dennis & Sue Sexhus/Keith & Susan Kakela, Leeds, ND
Rossow Buffalo Ranch, Lloyd & Clifford Rossow, Flasher, ND
Rocking R Bison Ltd., Larry & Linda Rolfstad, Rapid City, SD
Expedition Buffalo Company, Perry & Susan Handyside, Kremmling, CO
Buffalo Dance Bison, Casey Byrd, Presho, SD

BULLS

1st - Rossow Buffalo Ranch, Lloyd & Clifford Rossow, Flasher, ND
2nd - Nolz Poor Farm Bison, Ed & Deanna Nolz, Sioux Falls, SD
3rd - Sexhus/Kakela Bison Ranch, Dennis & Sue Sexhus/Keith & Susan Kakela, Leeds, ND

HEIFERS

1st - Rx KenMar Ranch, Dr. Ken and Marlys Throlson, New Rockford, ND
2nd - Rossow Buffalo Ranch, Lloyd & Clifford Rossow, Flasher, ND
3rd - Prairie Rose Buffalo Ranch, Heath Peterson, Reville, SD

2003

Animal	Sex	Yield Grade			HCW	REA	KPH	YGM	YGA	MAT			Lean L	Fat B	pH	Shear Force
		MFAT	AFAT							LEAN	SKEL	MARB				
2	Bull	0.32	0.24		731	11.2	0.5	2.6	2.4	170	210	370	37.4	14.0	5.51	8.7
3	Bull	0.36	0.20		718	11.7	0.5	2.5	2.1	220	190	320	37.2	15.1	5.41	6.1
4	Bull	0.40	0.28		730	13.0	1.5	2.4	2.1	190	170	370	35.7	15.6	5.53	8.1
7	Bull	0.52	0.40		653	9.1	0.5	3.5	3.2	170	180	380	38.0	16.9	5.57	7.6
8	Bull	0.40	0.32		618	10.2	0.5	2.7	2.5	180	180	330	37.5	17.5	5.56	7.6
11	Bull	0.12	0.12		541	8.8	0.5	2.1	2.1	180	170	280	37.2	25.1	5.53	8.4
13	Bull	0.16	0.12		667	10.4	0.5	2.2	2.1	170	180	310	35.2	14.5	5.52	10.0
16	Bull	0.40	0.32		569	8.8	1.0	3.0	2.8	170	170	310	38.7	17.1	5.51	6.7
19	Bull	0.20	0.08		602	8.6	1.0	2.7	2.4	170	190	280	34.1	19.9	5.55	8.0
20	Bull	0.56	0.32		560	9.3	1.5	3.4	2.8	180	180	290	35.0	25.5	5.52	6.9
1	Hfr	0.48	0.36		608	9.7	1.0	3.1	2.8	170	220	240	34.2	19.7	5.44	10.1
5	Hfr	0.92	0.40		530	8.2	2.5	4.7	3.4	170	170	360	43.0	13.6	5.57	9.9
6	Hfr	1.00	0.68		558	11.6	1.5	3.7	2.9	210	180	390	38.0	17.0	5.50	6.9
9	Hfr	0.60	0.40		532	9.4	0.0	3.0	2.5	160	170	440	37.0	21.3	5.58	6.6
10	Hfr	0.92	0.56		606	9.2	1.5	4.5	3.6	190	320	390	36.0	22.2	5.64	7.5
12	Hfr	0.40	0.28		580	10.8	1.5	2.5	2.2	190	370	280	38.1	18.1	5.57	6.9
14	Hfr	0.72	0.36		609	9.4	1.0	3.8	2.9	190	370	330	35.8	18.0	5.51	6.8
15	Hfr	0.48	0.36		449	8.5	1.5	3.0	2.7	160	160	310	38.4	18.2	5.50	7.7
17	Hfr	0.64	0.40		464	7.0	1.5	3.9	3.3	170	230	320	37.1	24.9	5.51	5.9
18	Hfr	0.40	0.36		478	7.2	1.5	3.3	3.2	180	220	330	36.8	19.3	5.65	6.5
Average		0.50	0.33		590	9.6	1.1	3.1	2.7	180	212	332	37.0	18.7	5.53	7.6
Bull Avg		0.34	0.24		639	10.1	0.8	2.7	2.5	180	182	324	36.6	18.1	5.52	7.8
Heifer Avg		0.66	0.42		541	9.1	1.4	3.6	3.0	179	241	339	37.4	19.2	5.55	7.5
Beef Average		0.48	0.49		787	13.1	2.3	2.9	3.0	165	167	423	39.5	14.3	5.50	8.0



Heifer

Final Live Weight At Home, 12/16/02 - 1,084 pounds

Live Weight At Western Buffalo Company - n/a

Hot Hanging Weight - 608 pounds

Sire: MTR - 1/2 "M" line, 1/2 Teddy Roosevelt

Dam - Buffalo Heifer from the Denver Gold Trophy Show and Sale

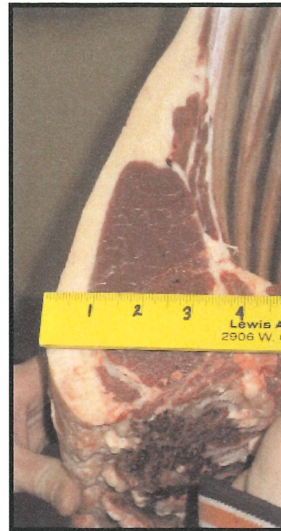
Born: 5/14/00

Weaned on 10/9/00

Weaning Weight - 336 pounds

The heifer came off grass on 11/1/02 with two pounds of cake per day. On 11/14/02 the bull was put on feed, "Doc Ken's pellets" and weighed 996 pounds at the time.

2003 REALITY BASED CARCASS CLASS



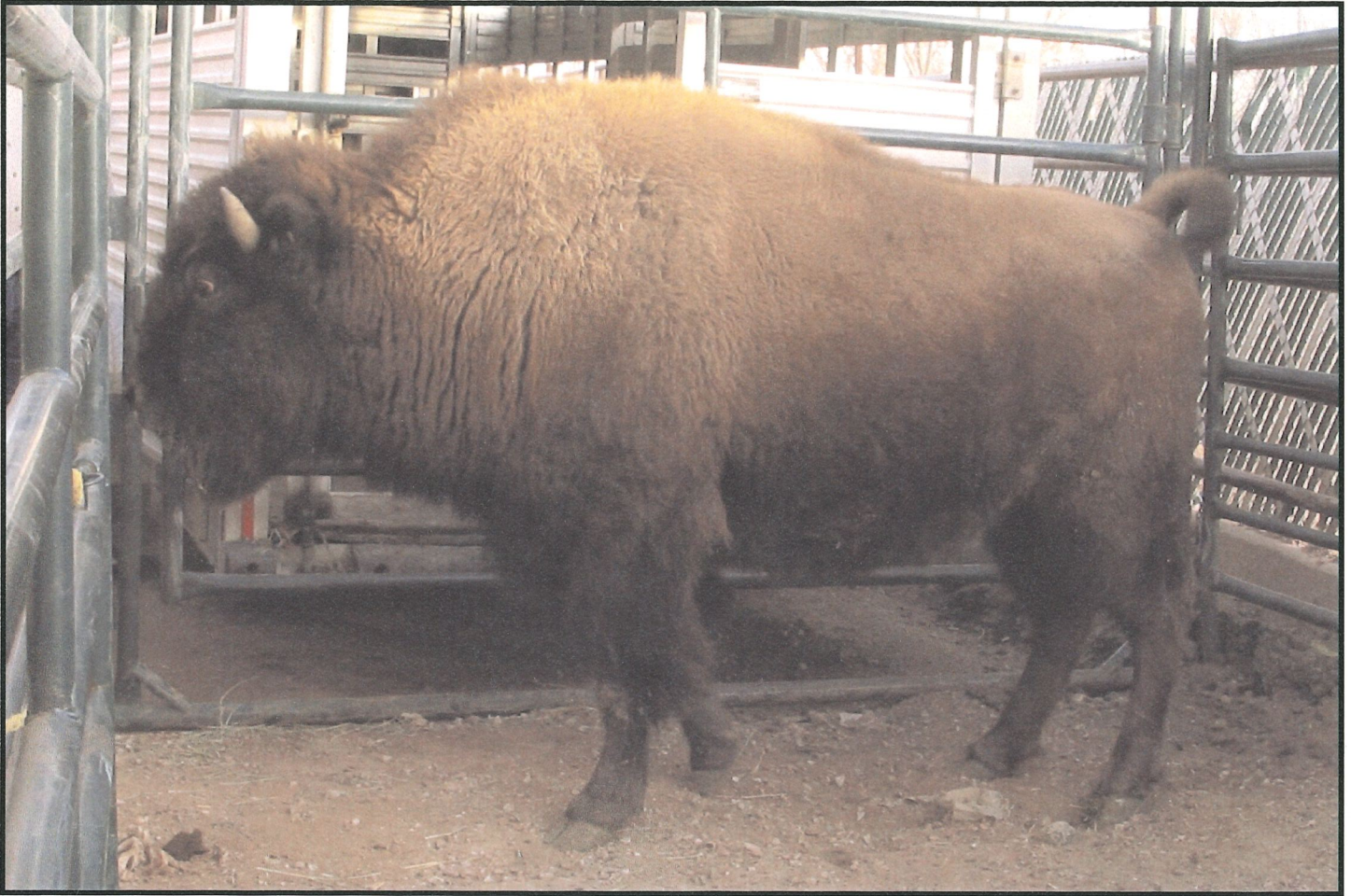
LIVE BUFFALO WEIGHT	CARCASS WEIGHT	PER LB. VALUE	CARCASS VALUE	
	628.0 608	\$2.38	\$1,447.04	
			% OF TOTAL VALUE	
MIDDLE BUFFALO VALUE		\$892.70	61.69%	
<i>(NY STRIP, TOP SIRLOIN BUTT, TENDERLOIN, RIB-EYE)</i>				
BUFFALO CHUCK VALUE		\$297.64	20.57%	
<i>(SHOULDER CLOD, INSIDE CHUCK ROLL, BRISKET)</i>				
BUFFALO ROUND VALUE		\$393.83	27.22%	
<i>(PELLED KNUCKLE, TOP ROUND, FLAT, EYE OF ROUND)</i>				
BUFFALO THIN MEATS		\$97.02	6.70%	
<i>(TRI-TIP, BALL-TIP, FLANK STEAK, BBQ RIB, SKIRT)</i>				
BUFFALO TRIM 86%		\$530.75	36.68%	
TOTAL VALUE			% MARK-UP	
\$2,211.94			152.86%	

WASTE ITEMS	LBS	% CARCASS WEIGHT
FAT & KIDNEY	25.45	4.19%
BONES	110	18.09%

LENGTH (SANDY RATIO) 39.75"	LENGTH:WEIGHT RATIO 0.065378
ROUND CIRCUMFERENCE 42.5"	ROUND CIRCUMFERENCE:WEIGHT RATIO 0.069901
HUMP DEPTH 30"	HUMP:WEIGHT RATIO 0.049342

ANIMAL	SEX	YEILD	GRADE	HCW	REA	KPH	YGM	YGA	LEAN	MAT	SKEL	MARB	LEAN	FAT	PH	SHEAR
	HFR	0.48	0.36	608	9.7	1.0	3.1	2.8	170	220	240	34.2	19.7	5.44	10.1	

RBCCA



~~Bull~~ Heifer

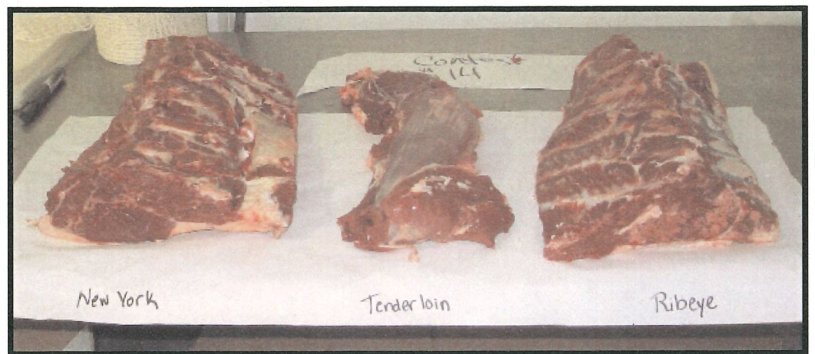
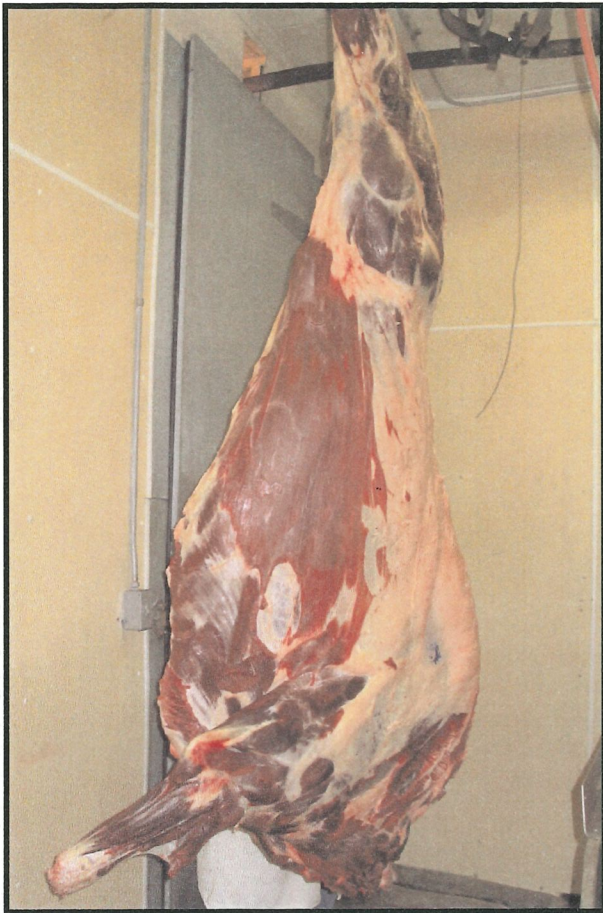
Final Live Weight At Home, n/a
Live Weight At Western Buffalo Company - n/a
Hot Hanging Weight - 609 pounds

Weaned in February 2001

Weaning Weight - n/a

The calf was fed hay and oats for the first winter and grass for the first summer. The animal was finished on grass, oats and corn for 120 days.

2003 REALITY BASED CARCASS CLASS



LIVE BUFFALO WEIGHT	CARCASS WEIGHT	PER LB. VALUE	CARCASS VALUE	
	609	\$2.38	\$1,449.42	
			% OF TOTAL VALUE	
MIDDLE BUFFALO VALUE (NY STRIP, TOP SIRLOIN BUTT, TENDERLOIN, RIB-EYE)		\$888.29		61.29%
BUFFALO CHUCK VALUE (SHOULDER CLOD, INSIDE CHUCK ROLL, BRISKET)		\$275.52		19.01%
BUFFALO ROUND VALUE (PELLED KNUCKLE, TOP ROUND, FLAT, EYE OF ROUND)		\$428.09		29.54%
BUFFALO THIN MEATS (TRI-TIP, BALL-TIP, FLANK STEAK, BBQ RIB, SKIRT)		\$78.22		5.40%
BUFFALO TRIM 85%		\$477.90		32.97%
		TOTAL VALUE		% MARK-UP
		\$2,148.02		148.20%

WASTE ITEMS	LBS	% CARCASS WEIGHT
FAT & KIDNEY	39	6.40%
BONES	114.1	18.74%

LENGTH (SANDY RATIO) 39.5"	LENGTH:WEIGHT RATIO 0.06486
ROUND CIRCUMFERENCE 41.5"	ROUND CIRCUMFERENCE:WEIGHT RATIO 0.068144
HUMP DEPTH 30"	HUMP:WEIGHT RATIO 0.049261

RBCCN

ANIMAL	SEX	YEILD	GRADE	HCW	REA	KPH	YGM	YGA	LEAN	MAT	MARB	LEAN	FAT	PH	SHEAR
	HFR	MFAT	AFAT						LEAN	SKEL		L	B		FORCE
		0.72	0.36	609	9.4	1.0	3.8	2.9	190	370	330	35.8	18.0	5.51	6.8





Heifer

Final Live Weight At Home, 834 pounds

Live Weight At Western Buffalo Company - n/a

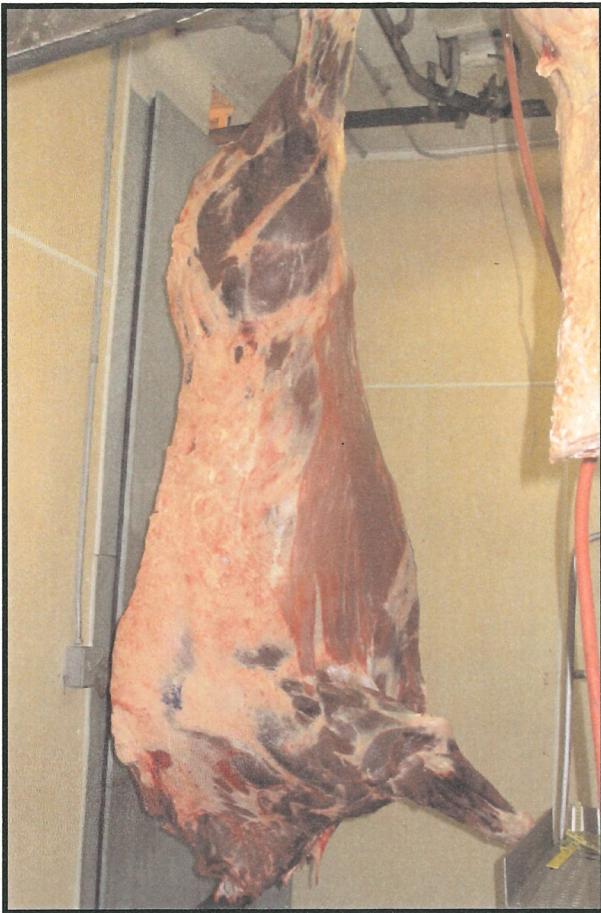
Hot Hanging Weight - 478 pounds

Weaned on 11/15/01

Weaning Weight - 454 pounds*

The heifer was on free choice grass hay and a mixture of 3/4 corn and 1/4 alfalfa at three pounds per day for the first winter. The heifer was out to pasture the first summer. The heifer was finished on free choice grass hay and a mixture of 3/4 corn and 1/4 alfalfa at 15 pounds per day for 93 days.

2003 REALITY BASED CARCASS CLASS



LIVE BUFFALO WEIGHT	CARCASS WEIGHT	PER LB. VALUE	CARCASS VALUE
	478	\$2.38	\$1,137.64
			% OF TOTAL VALUE
MIDDLE BUFFALO VALUE (NY STRIP, TOP SIRLOIN BUTT, TENDERLOIN, RIB-EYE)		\$661.95	58.19%
BUFFALO CHUCK VALUE (SHOULDER CLOD, INSIDE CHUCK ROLL, BRISKET)		\$203.66	17.90%
BUFFALO ROUND VALUE (PELLED KNUCKLE, TOP ROUND, FLAT, EYE OF ROUND)		\$334.19	29.38%
BUFFALO THIN MEATS (TRI-TIP, BALL-TIP, FLANK STEAK, BBQ RIB, SKIRT)		\$67.06	5.89%
BUFFALO TRIM 85%		\$380.70	33.46%
		TOTAL VALUE	% MARK-UP
		\$1,647.56	144.82%

WASTE ITEMS	LBS	% CARCASS WEIGHT
FAT & KIDNEY	30.6	6.40%
BONES	95	19.87%

LENGTH (SANDY RATIO) 37.5"	LENGTH:WEIGHT RATIO 0.078452
ROUND CIRCUMFERENCE 39.5"	ROUND CIRCUMFERENCE:WEIGHT RATIO 0.082636
HUMP DEPTH 28"	HUMP:WEIGHT RATIO 0.058577

ANIMAL	SEX	YEILD	GRADE	HCW	REA	KPH	YGM	YGA	LEAN	MAT	MARB	LEAN	FAT	PH	SHEAR
	HFR	MFAT	AFAT						LEAN	SKEL		L	B		FORCE
		0.40	0.36	478	7.2	1.5	3.3	3.2	180	220	330	36.8	19.3	5.65	6.5

FBCCR



Heifer

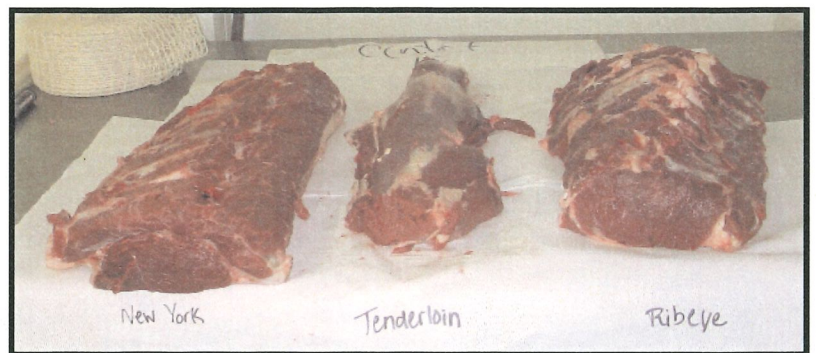
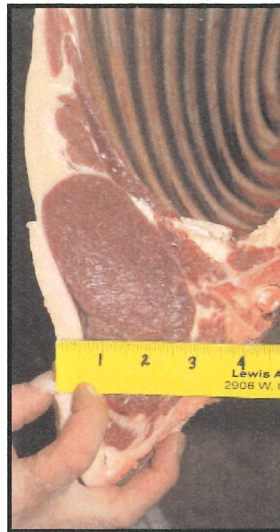
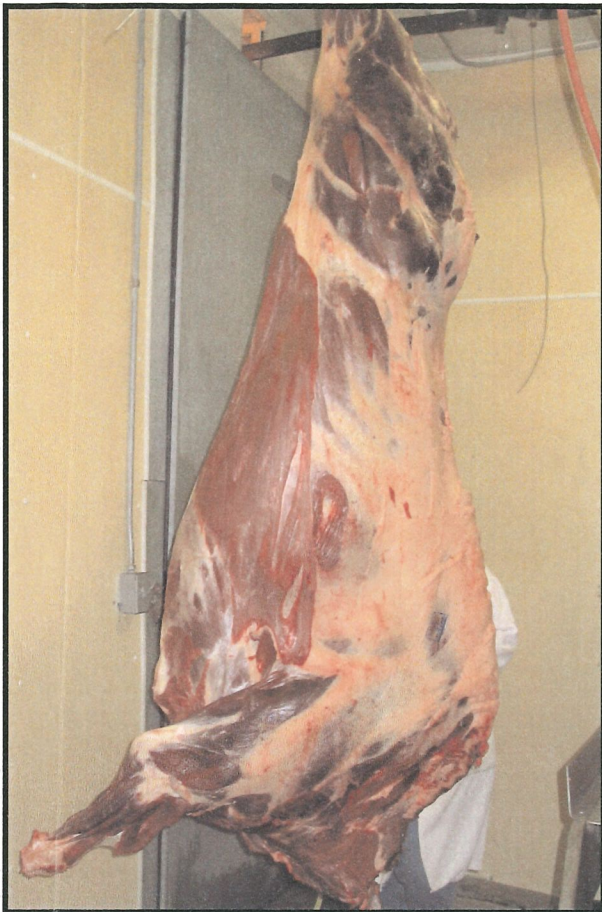
Final Live Weight At Home, 990 pounds
Live Weight At Western Buffalo Company - n/a
Hot Hanging Weight - 580 pounds

Weaned on 11/30/00

Weaning Weight - 385 pounds

The heifer was on free choice hay and free choice screening pellets and corn for the first winter. The first summer, the heifer was on grass hay. The animal was finished on a crested wheat hay and a screening and corn pelletHeifer

2003 REALITY BASED CARCASS CLASS



LIVE BUFFALO WEIGHT	CARCASS WEIGHT	PER LB. VALUE	CARCASS VALUE	
	580	\$2.38	\$1,380.40	
			% OF TOTAL VALUE	
MIDDLE BUFFALO VALUE		\$867.98	\$867.98	62.88%
<i>(NY STRIP, TOP SIRLOIN BUTT, TENDERLOIN, RIB-EYE)</i>				
BUFFALO CHUCK VALUE		\$269.72	\$269.72	19.54%
<i>(SHOULDER CLOD, INSIDE CHUCK ROLL, BRISKET)</i>				
BUFFALO ROUND VALUE		\$432.74	\$432.74	31.35%
<i>(PELLED KNUCKLE, TOP ROUND, FLAT, EYE OF ROUND)</i>				
BUFFALO THIN MEATS		\$72.32	\$72.32	5.24%
<i>(TRI-TIP, BALL-TIP, FLANK STEAK, BBQ RIB, SKIRT)</i>				
BUFFALO TRIM	88%	\$440.00	\$440.00	31.87%
		TOTAL VALUE	\$2,082.76	% MARK-UP
				150.88%

WASTE ITEMS	LBS	% CARCASS WEIGHT
FAT & KIDNEY	29	5.00%
BONES	91	15.69%

LENGTH (SANDY RATIO) 37.5"	LENGTH:WEIGHT RATIO 0.064655
ROUND CIRCUMFERENCE 41"	ROUND CIRCUMFERENCE:WEIGHT RATIO 0.07069
HUMP DEPTH 29"	HUMP:WEIGHT RATIO 0.05

ANIMAL	SEX	YEILD	GRADE	HCW	REA	KPH	YGM	YGA	LEAN	MAT	SKEL	MARB	LEAN	FAT	PH	SHEAR
	HFR	0.40	0.28	580	10.8	1.5	2.5	2.2	190		370	280	38.1	18.1	5.57	FORCE
																6.9

RBCC



Heifer

Final Live Weight At Home, n/a

Live Weight At Western Buffalo Company - n/a

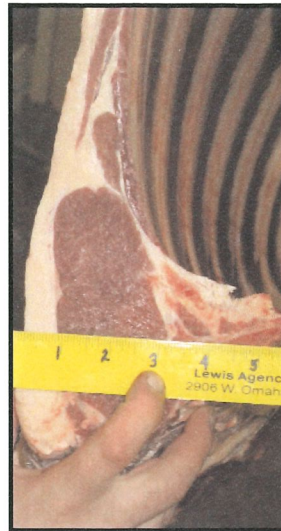
Hot Hanging Weight - 449 pounds

Weaned on 11/16/01

Weaning Weight - 462 pounds

The heifer was fed hay and buffalo grow for the first winter and was out to pasture for the first summer. The animal was finished on full feed and hay for 128 days. The finishing feed consisted of full grass and a mixture of 450 pound corn, 250 DDG's, 300 pounds molasses, and 1,000 pounds of oat screenings for a 12.6 percent protein per ton.

2003 REALITY BASED CARCASS CLASS



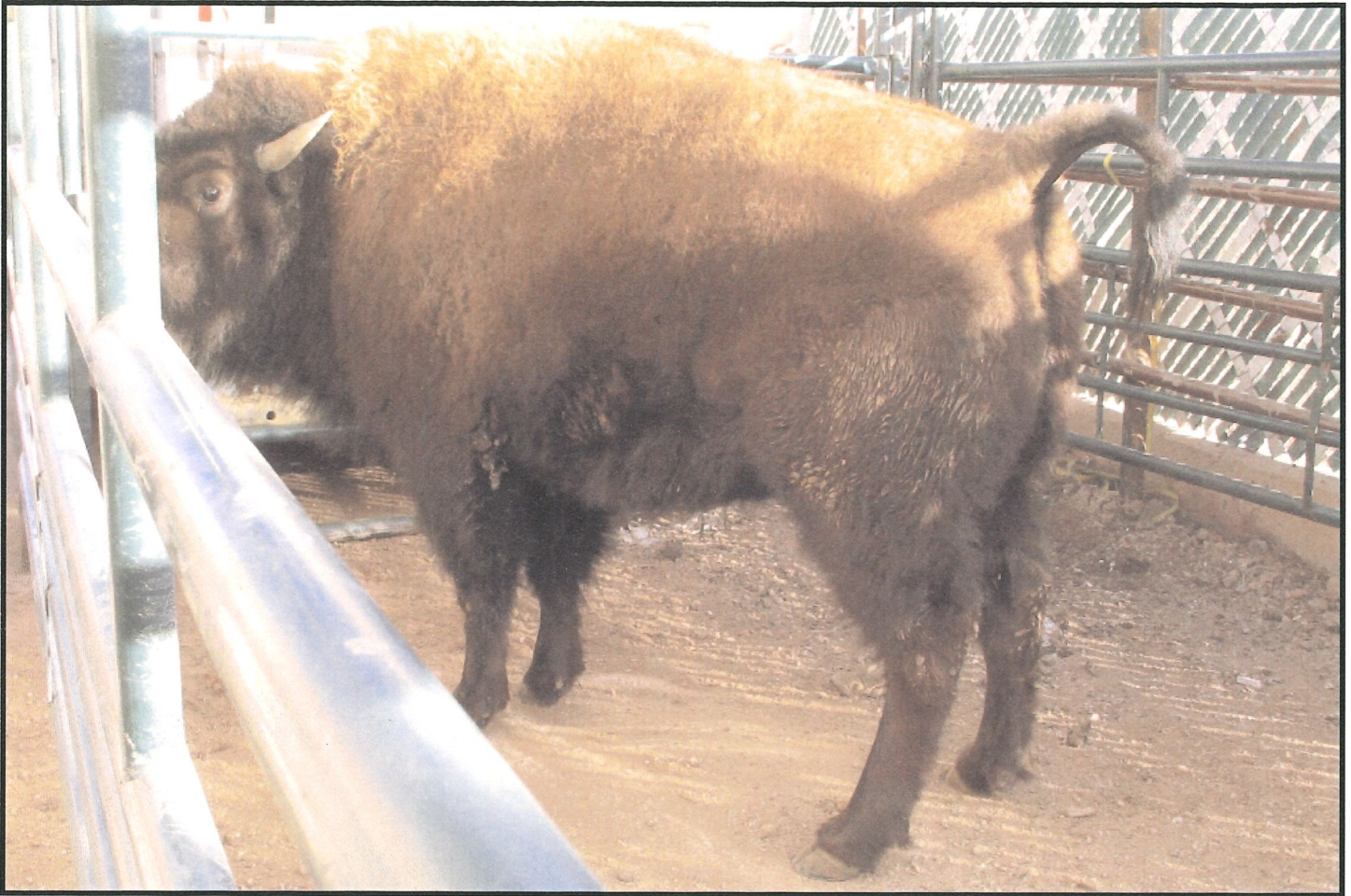
LIVE BUFFALO WEIGHT	CARCASS WEIGHT	PER LB. VALUE	CARCASS VALUE	
	449	\$2.38	\$1,068.62	
			% OF TOTAL VALUE	
MIDDLE BUFFALO VALUE (NY STRIP, TOP SIRLOIN BUTT, TENDERLOIN, RIB-EYE)		\$676.61	63.32%	
BUFFALO CHUCK VALUE (SHOULDER CLOD, INSIDE CHUCK ROLL, BRISKET)		\$205.81	19.26%	
BUFFALO ROUND VALUE (PELLED KNUCKLE, TOP ROUND, FLAT, EYE OF ROUND)		\$318.20	29.78%	
BUFFALO THIN MEATS (TRI-TIP, BALL-TIP, FLANK STEAK, BBQ RIB, SKIRT)		\$57.34	5.37%	
BUFFALO TRIM 86%		\$341.25	31.93%	
		TOTAL VALUE	% MARK-UP	
		\$1,599.21	149.65%	

WASTE ITEMS	LBS	% CARCASS WEIGHT
FAT & KIDNEY	28.75	6.40%
BONES	84.15	18.74%

LENGTH (SANDY RATIO) 38.5"	LENGTH:WEIGHT RATIO 0.085746
ROUND CIRCUMFERENCE 37"	ROUND CIRCUMFERENCE:WEIGHT RATIO 0.082405
HUMP DEPTH 26"	HUMP:WEIGHT RATIO 0.057906

ANIMAL	SEX	YEILD	GRADE	HCW	REA	KPH	YGM	YGA	LEAN	MAT	SKEL	MARB	LEAN	FAT	PH	SHEAR
	HFR	0.48	0.36	449	8.5	1.5	3.0	2.7	160	160	310	38.4	18.2	5.50	7.7	

RBCCO



Heifer

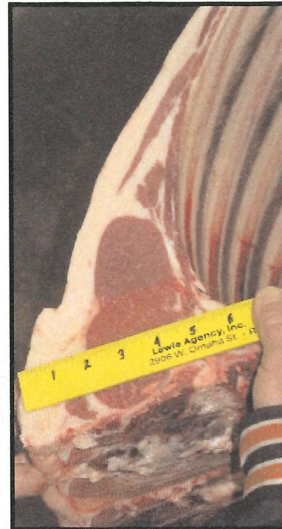
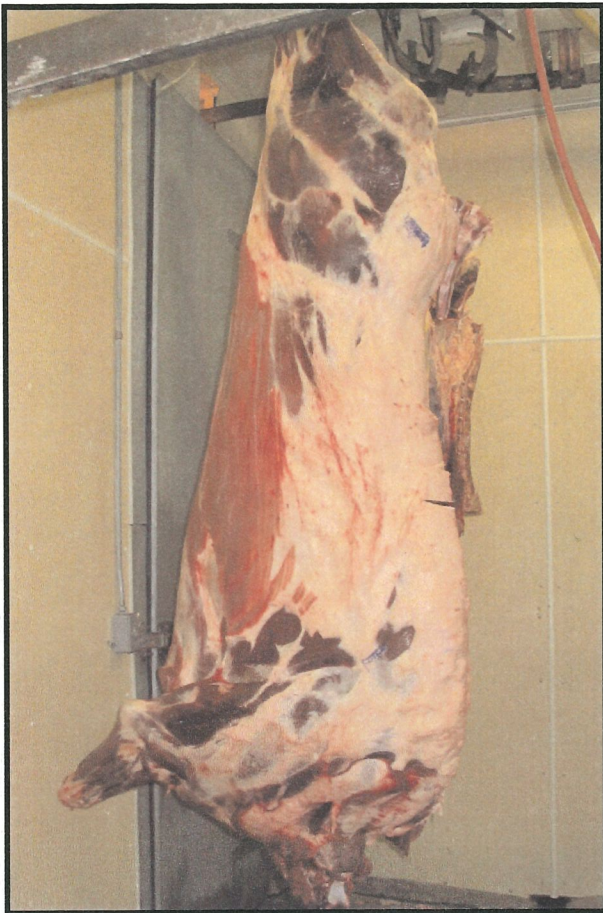
Final Live Weight At Home, 1,032 pounds
Live Weight At Western Buffalo Company - n/a
Hot Hanging Weight - 558 pounds

Weaned on 12/1/01

Weaning Weight - 460 pounds

The heifer was fed free choice pellets plus hay free choice for 90 days the first winter. The heifer was turned out to grass in March with three pounds of cake per day for 60 days. Because of the dry year, the animal was put on feed earlier than normal, in July. The animal was on finish feed for 150 days.

2003 REALITY BASED CARCASS CLASS



LIVE BUFFALO WEIGHT	CARCASS WEIGHT	PER LB. VALUE	CARCASS VALUE
	558	\$2.38	\$1,328.04
			% OF TOTAL VALUE
MIDDLE BUFFALO VALUE (NY STRIP, TOP SIRLOIN BUTT, TENDERLOIN, RIB-EYE)		\$837.46	63.06%
BUFFALO CHUCK VALUE (SHOULDER CLOD, INSIDE CHUCK ROLL, BRISKET)		\$254.16	19.14%
BUFFALO ROUND VALUE (PELLED KNUCKLE, TOP ROUND, FLAT, EYE OF ROUND)		\$379.83	28.60%
BUFFALO THIN MEATS (TRI-TIP, BALL-TIP, FLANK STEAK, BBQ RIB, SKIRT)		\$63.46	4.78%
BUFFALO TRIM	84%	\$418.60	31.52%
		TOTAL VALUE	% MARK-UP
		\$1,953.51	147.10%

WASTE ITEMS	LBS	% CARCASS WEIGHT
FAT & KIDNEY	39.56	7.08%
BONES	104.75	18.77%

LENGTH (SANDY RATIO) 39"	LENGTH:WEIGHT RATIO 0.069892
ROUND CIRCUMFERENCE 40.25"	ROUND CIRCUMFERENCE:WEIGHT RATIO 0.072133
HUMP DEPTH 29"	HUMP:WEIGHT RATIO 0.051971

															RBCCF
ANIMAL	SEX	YEILD GRADE		HCW	REA	KPH	YGM	YGA	MAT		MARB	LEAN	FAT	PH	SHEAR
	HFR	MFAT	AFAT						LEAN	SKEL		L	B		FORCE
		1.00	0.68	558	11.6	1.5	3.7	2.9	210	180	390	38.0	17.0	5.50	6.9



Heifer

Final Live Weight At Home, 810 pounds

Live Weight At Western Buffalo Company - n/a

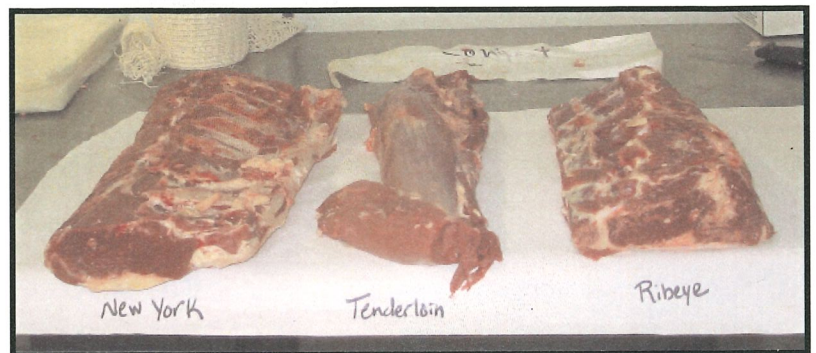
Hot Hanging Weight - 464 pounds

Weaned on 12/14/01

Weaning Weight - 432 pounds

The heifer was on free choice grass hay and a mixture of 3/4 corn and 1/4 alfalfa at three pounds per day for the first winter. The heifer was out to pasture the first summer. The heifer was finished on free choice grass hay and a mixture of 3/4 corn and 1/4 alfalfa at 15 pounds per day for 93 days.

2003 REALITY BASED CARCASS CLASS



LIVE BUFFALO WEIGHT	CARCASS WEIGHT	PER LB. VALUE	CARCASS VALUE	
	464	\$2.38	\$1,104.32	
			% OF TOTAL VALUE	
MIDDLE BUFFALO VALUE		\$649.31	58.80%	
<i>(NY STRIP, TOP SIRLOIN BUTT, TENDERLOIN, RIB-EYE)</i>				
BUFFALO CHUCK VALUE		\$207.33	18.77%	
<i>(SHOULDER CLOD, INSIDE CHUCK ROLL, BRISKET)</i>				
BUFFALO ROUND VALUE		\$331.34	30.00%	
<i>(PELLED KNUCKLE, TOP ROUND, FLAT, EYE OF ROUND)</i>				
BUFFALO THIN MEATS		\$61.36	5.56%	
<i>(TRI-TIP, BALL-TIP, FLANK STEAK, BBQ RIB, SKIRT)</i>				
BUFFALO TRIM	86%	\$348.30	31.54%	
TOTAL VALUE			% MARK-UP	
\$1,597.64			144.67%	

WASTE ITEMS	LBS	% CARCASS WEIGHT
FAT & KIDNEY	29.7	6.40%
BONES	91.3	19.68%

LENGTH (SANDY RATIO) 36.5"	LENGTH:WEIGHT RATIO 0.078664
ROUND CIRCUMFERENCE 38.5"	ROUND CIRCUMFERENCE:WEIGHT RATIO 0.082974
HUMP DEPTH 26"	HUMP:WEIGHT RATIO 0.056034

RBCCQ

ANIMAL	SEX	YEILD	GRADE	MFAT	AFAT	HCW	REA	KPH	YGM	YGA	LEAN	MAT	SKEL	MARB	LEAN	FAT	PH	SHEAR
	HFR	0.64		0.40		464	7.0	1.5	3.9	3.3	170		230	320	37.1	24.9	5.51	5.9



Heifer

Final Live Weight At Home, 948 pounds

Live Weight At Western Buffalo Company - n/a

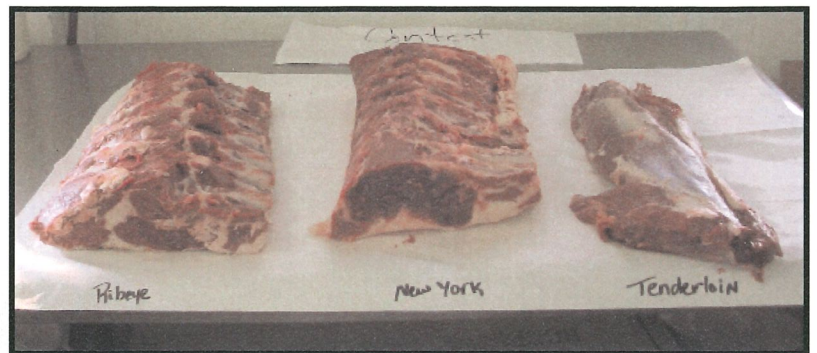
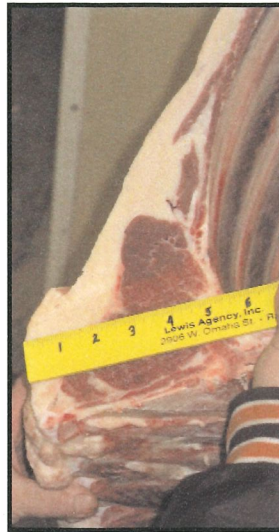
Hot Hanging Weight - 532 pounds

Weaned on 11/2/01

Weaning Weight - 310 pounds

The heifer was fed a mixture of 70 percent corn/30 percent oats the first winter, along with mixed grass hay. The first summer, the heifer was fed straight cracked corn and mixed hay. The animal was finished on cracked corn, mixed hay and corn stalks for 90 days.

2003 REALITY BASED CARCASS CLASS



LIVE BUFFALO WEIGHT	CARCASS WEIGHT	PER LB. VALUE	CARCASS VALUE	
	532	\$2.38	\$1,266.16	
			% OF TOTAL VALUE	
MIDDLE BUFFALO VALUE (NY STRIP, TOP SIRLOIN BUTT, TENDERLOIN, RIB-EYE)		\$742.43	58.64%	
BUFFALO CHUCK VALUE (SHOULDER CLOD, INSIDE CHUCK ROLL, BRISKET)		\$246.96	19.50%	
BUFFALO ROUND VALUE (PELLED KNUCKLE, TOP ROUND, FLAT, EYE OF ROUND)		\$348.63	27.53%	
BUFFALO THIN MEATS (TRI-TIP, BALL-TIP, FLANK STEAK, BBQ RIB, SKIRT)		\$58.98	4.66%	
BUFFALO TRIM 84%		\$424.00	33.49%	
		TOTAL VALUE	% MARK-UP	
		\$1,821.00	143.82%	

WASTE ITEMS	LBS	% CARCASS WEIGHT
FAT & KIDNEY	39	7.33%
BONES	99	18.61%

LENGTH (SANDY RATIO) 38.5"	LENGTH:WEIGHT RATIO 0.072368
ROUND CIRCUMFERENCE 39"	ROUND CIRCUMFERENCE:WEIGHT RATIO 0.073308
HUMP DEPTH 26.5"	HUMP:WEIGHT RATIO 0.049812

ANIMAL	SEX	YEILD	GRADE	HCW	REA	KPH	YGM	YGA	LEAN	MAT	SKEL	MARB	LEAN	FAT	PH	SHEAR
	HFR	0.60	0.40	532	9.4	0.0	3.0	2.5	160		170	440	37.0	21.3	5.58	FORCE
																6.6

RBCCI





Heifer

Final Live Weight At Home, 1,100 pounds

Live Weight At Western Buffalo Company - n/a

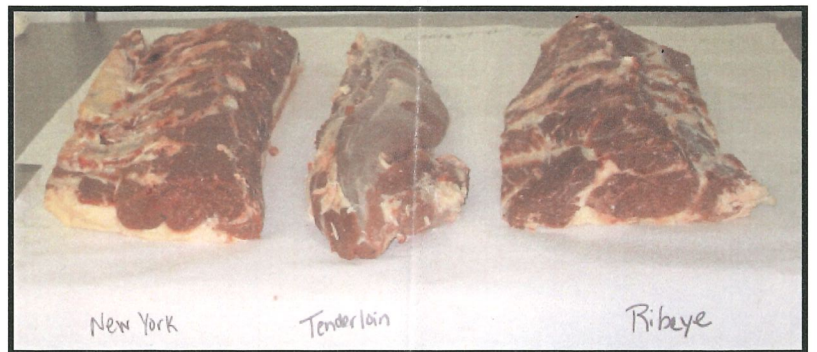
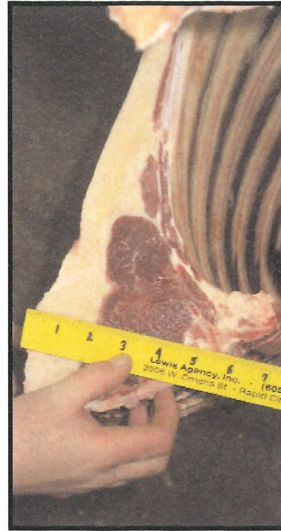
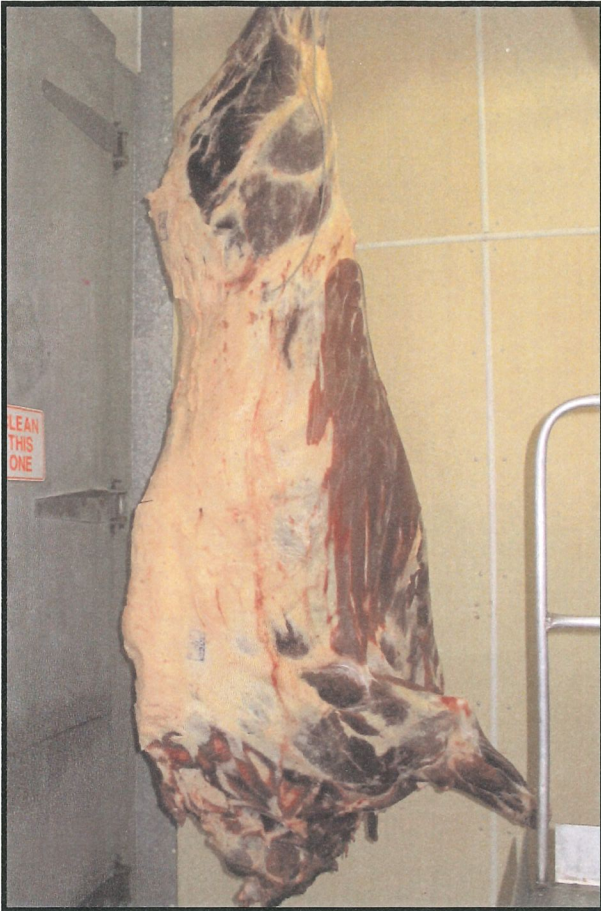
Hot Hanging Weight - 606 pounds

Weaned in January 2001

Weaning Weight - 472 pounds

The heifer was on pasture the first winter and summer. The animal was finished on four to five pounds per day of a mixture of corn, oats and cracked soybeans for 90 days.

2003 REALITY BASED CARCASS CLASS



LIVE BUFFALO WEIGHT	CARCASS WEIGHT	PER LB. VALUE	CARCASS VALUE
	606	\$2.38	\$1,442.28
			% OF TOTAL VALUE
MIDDLE BUFFALO VALUE (NY STRIP, TOP SIRLOIN BUTT, TENDERLOIN, RIB-EYE)		\$834.46	57.86%
BUFFALO CHUCK VALUE (SHOULDER CLOD, INSIDE CHUCK ROLL, BRISKET)		\$248.96	17.26%
BUFFALO ROUND VALUE (PELLED KNUCKLE, TOP ROUND, FLAT, EYE OF ROUND)		\$380.69	26.40%
BUFFALO THIN MEATS (TRI-TIP, BALL-TIP, FLANK STEAK, BBQ RIB, SKIRT)		\$72.79	5.05%
BUFFALO TRIM	84%	\$462.80	32.09%
		TOTAL VALUE	% MARK-UP
		\$1,999.70	138.65%

WASTE ITEMS	LBS	% CARCASS WEIGHT
FAT & KIDNEY	47.8	7.89%
BONES	122.1	20.15%

LENGTH (SANDY RATIO) 39.5"	LENGTH:WEIGHT RATIO 0.065182
ROUND CIRCUMFERENCE 40"	ROUND CIRCUMFERENCE:WEIGHT RATIO 0.066007
HUMP DEPTH 28.25"	HUMP:WEIGHT RATIO 0.046617

ANIMAL	SEX	YEILD	GRADE	HCW	REA	KPH	YGM	YGA	LEAN	MAT	SKEL	MARB	LEAN	FAT	PH	SHEAR
	HFR	0.92	0.56	606	9.2	1.5	4.5	3.6	190	320	390	36.0	22.2	5.64	7.5	

9



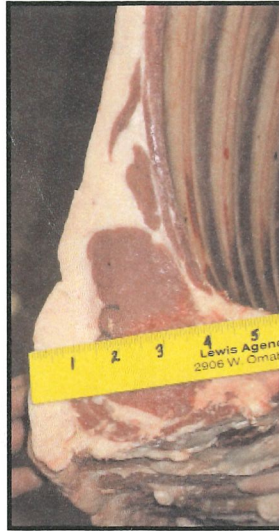
Heifer

Final Live Weight At Home, 958 pounds
Live Weight At Western Buffalo Company - n/a
Hot Hanging Weight - 530 pounds

Weaned on 1/19/02

Weaning Weight - 396 pounds

The heifer was on free choice pellets for 90 days the first winter, plus free choice grass hay. The heifer was on grass from March to July with three pounds of cake per day. The animal was finished on free choice hay and screening pellets. Grass hay and a screening based pellet were used. The animal was on finish feed for 150 days.



2003 REALITY BASED CARCASS CLASS



LIVE BUFFALO WEIGHT	CARCASS WEIGHT	PER LB. VALUE	CARCASS VALUE
	530	\$2.38	\$1,261.40
			% OF TOTAL VALUE
MIDDLE BUFFALO VALUE (NY STRIP, TOP SIRLOIN BUTT, TENDERLOIN, RIB-EYE)		\$709.84	56.27%
BUFFALO CHUCK VALUE (SHOULDER CLOD, INSIDE CHUCK ROLL, BRISKET)		\$237.00	18.79%
BUFFALO ROUND VALUE (PELLED KNUCKLE, TOP ROUND, FLAT, EYE OF ROUND)		\$327.06	25.93%
BUFFALO THIN MEATS (TRI-TIP, BALL-TIP, FLANK STEAK, BBQ RIB, SKIRT)		\$68.87	5.46%
BUFFALO TRIM 84%		\$395.20	31.33%
		TOTAL VALUE	% MARK-UP
		\$1,737.97	137.78%

WASTE ITEMS	LBS	% CARCASS WEIGHT
FAT & KIDNEY	32	6.04%
BONES	112.45	21.22%

LENGTH (SANDY RATIO) 36.5"	LENGTH:WEIGHT RATIO 0.068868
ROUND CIRCUMFERENCE 39"	ROUND CIRCUMFERENCE:WEIGHT RATIO 0.073585
HUMP DEPTH 27.25"	HUMP:WEIGHT RATIO 0.051415

ANIMAL	SEX	YEILD	GRADE	MFAT	AFAT	HCW	REA	KPH	YGM	YGA	LEAN	MAT	SKEL	MARB	LEAN	FAT	PH	SHEAR
	HFR														L	B		FORCE
				0.92	0.40	530	8.2	2.5	4.7	3.4	170		170	360	43.0	13.6	5.57	9.9

2003 REALITY BASED CARCASS CLASS

COMPOSITE HEIFER

LIVE BUFFALO WEIGHT	CARCASS WEIGHT	PER LB. VALUE	CARCASS VALUE
	541.4	\$2.38	\$1,288.53
			% OF TOTAL VALUE
MIDDLE BUFFALO VALUE <i>(NY STRIP, TOP SIRLOIN BUTT, TENDERLOIN, RIB-EYE)</i>		\$776.40	60.25%
BUFFALO CHUCK VALUE <i>(SHOULDER CLOD, INSIDE CHUCK ROLL, BRISKET)</i>		\$244.71	18.99%
BUFFALO ROUND VALUE <i>(PELLED KNUCKLE, TOP ROUND, FLAT, EYE OF ROUND)</i>		\$367.49	28.52%
BUFFALO THIN MEATS <i>(TRI-TIP, BALL-TIP, FLANK STEAK, BBQ RIB, SKIRT)</i>		\$69.32	5.38%
BUFFALO TRIM 86%		\$425.62	33.03%
		TOTAL VALUE	% MARK-UP
		\$1,883.54	146.18%

WASTE ITEMS	LBS	% CARCASS WEIGHT
FAT & KIDNEY	36	6.65%
BONES	104	19.21%

LENGTH <i>(SANDY RATIO)</i>	LENGTH:WEIGHT RATIO
ROUND CIRCUMFERENCE	ROUND CIRCUMFERENCE:WEIGHT RATIO
HUMP DEPTH	HUMP:WEIGHT RATIO

ANIMAL	SEX	YEILD GRADE		HCW	REA	KPH	YGM	YGA	MAT		LEAN	FAT	PH	SHEAR	
Average	HFR	MFAT	AFAT						LEAN	SKEL	L	B		FORCE	
		0.66	0.42	541	9.1	1.4	3.6	3.0	179	241	339	37.4	19.2	5.55	7.5

RBCCA